

Laureando: Matteo Trebbi



UNIVERSITA' DEGLI STUDI DI CAMERINO _Scuola di Architettura e Design "Eduardo Vittoria" _sede di Ascoli Piceno _Laurea Magistrale in Architettura A.A. 2012/2013

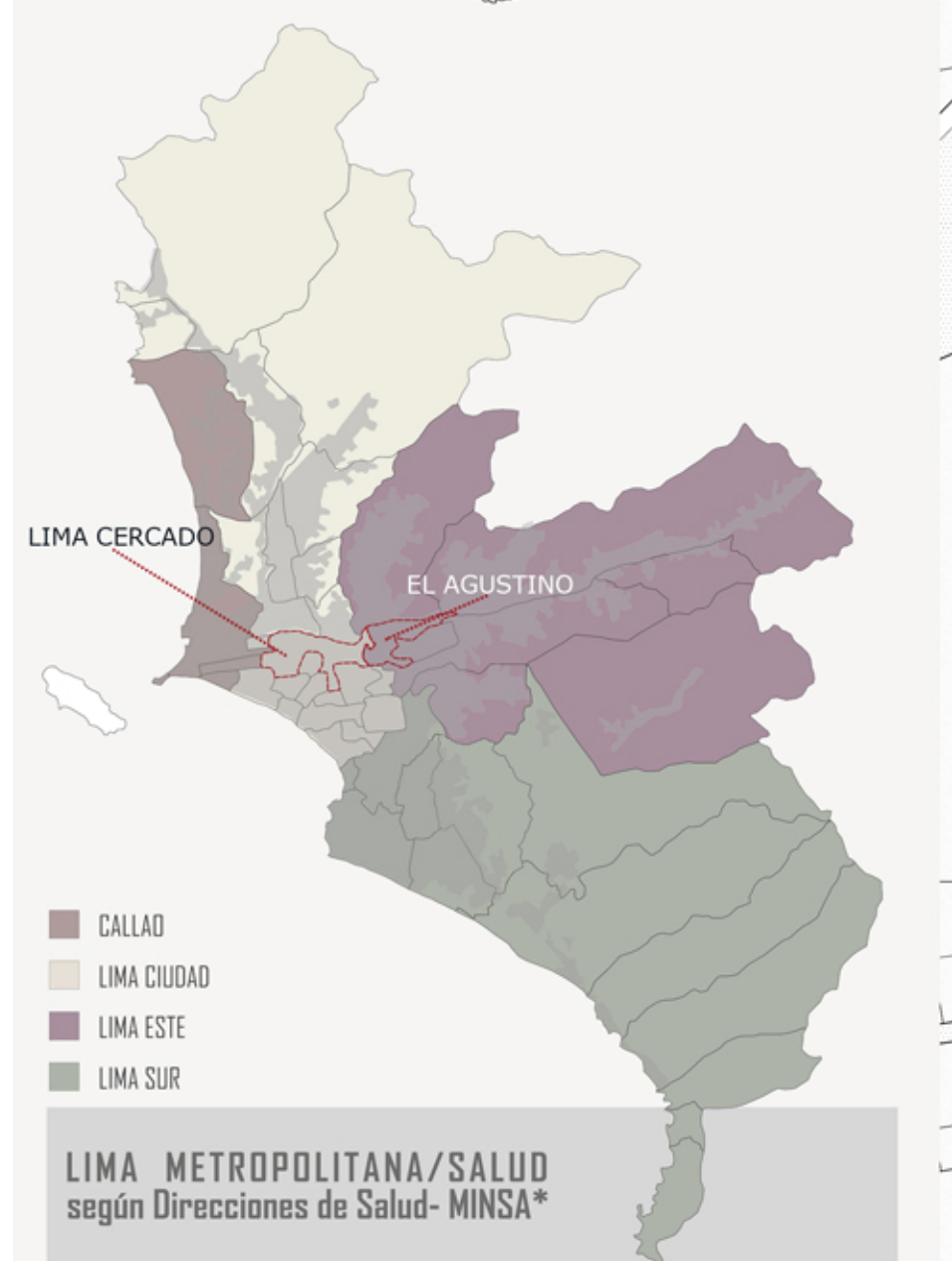
TITOLO TESI: REGENERACION MEDIO AMBIENTAL DEL AREA URBANA DE BARRIOS ALTOS CERCADO DE LIMA, LIMA, PERU" _VIVIENDA SOCIAL

Relatore: prof. Maria Federica Ottone
Correlatori: prof. Roberta Cocci Grifoni, prof. Rodrigo Cordova Aleman

Il progetto nasce da uno studio preliminare sul rapporto tra la storia e l'identità del quartiere "Cercado de Lima", inserendosi nel processo di rigenerazione ambientale e sociale dell'intera area. Il progetto ha l'intenzione di ricollocare gli abitanti di questo quartiere in abitazioni moderne, progettate ponendo un'attenzione particolare al problema principale che è l'elevata umidità. Il progetto di Social Housing è stato pensato e progettato in modo tale da creare un punto di attrazione anche per eventuali nuovi residenti che finalmente vedono in questo luogo non più un posto degradato ma un nodo importante della metropoli, ben collegato sia alla vicina stazione della Metro sia al nuovo progetto di parco fluviale che riguarda il fiume Rimac. L'obiettivo è quindi quello di creare una zona verde, per lo più pedonale, lontana dall'inquinamento acustico e atmosferico che caratterizza questa zona della città, ricreando punti di incontro tra differenti classi sociali.



LIMA, PERU
12°02'06"S 77°01'07"W
altitudine altura 0-133 m. s.l.m.
superficie superficie 2.664,60 km²
popolazione población 9 072 935 (2012)
densità densidad 3 404,99 ab./km²



DATI CLIMATICI DATOS DE EL CLIMA

scenarijo estivo escenario de verano	9 gennaio 2013 9 enero 2013
TEMPERATURE TEMPERATURAS	
MIN 19,3°C	MAX 21,9°C
UMIDITA' HUMEDAD	
MIN 69%	MAX 88%
COPERTURA NUVOLOSA CUBIERTA DE NUBES	
MIN 0%	MAX 50%
VENTO VIENTO	
MIN 1,80m/s	MAX 3,90m/s
scenarijo invernale escenario de invierno	31 luglio 2013 9 julio 2013
TEMPERATURE TEMPERATURAS	
MIN 15°C	MAX 18°C
UMIDITA' HUMEDAD	
MIN 77%	MAX 94%
COPERTURA NUVOLOSA CUBIERTA DE NUBES	
MIN 100%	MAX 100%
VENTO VIENTO	
MIN 1,80m/s	MAX 3,25m/s
PRECIPITAZIONI ANNUE PRECIPITACION ANUAL (2013)	
11mm	

fonte weatherspark.com



ESTUDIO DE LAS POSIBLES ESPECIES EN EL PARQUE



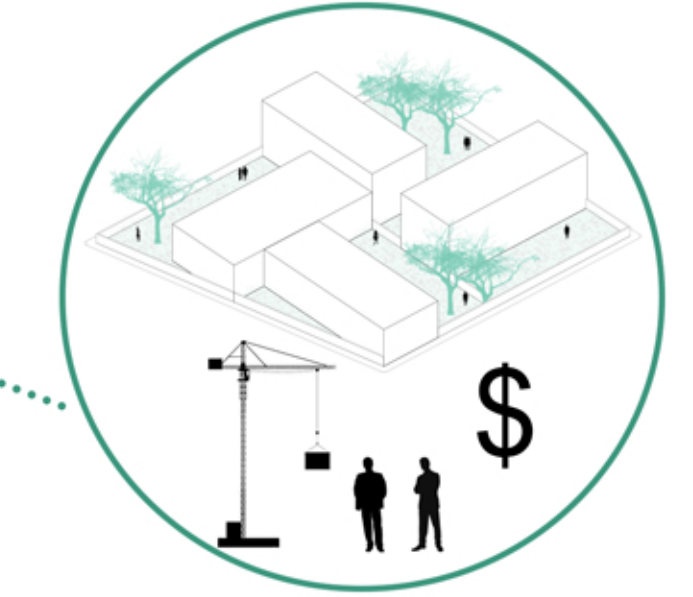
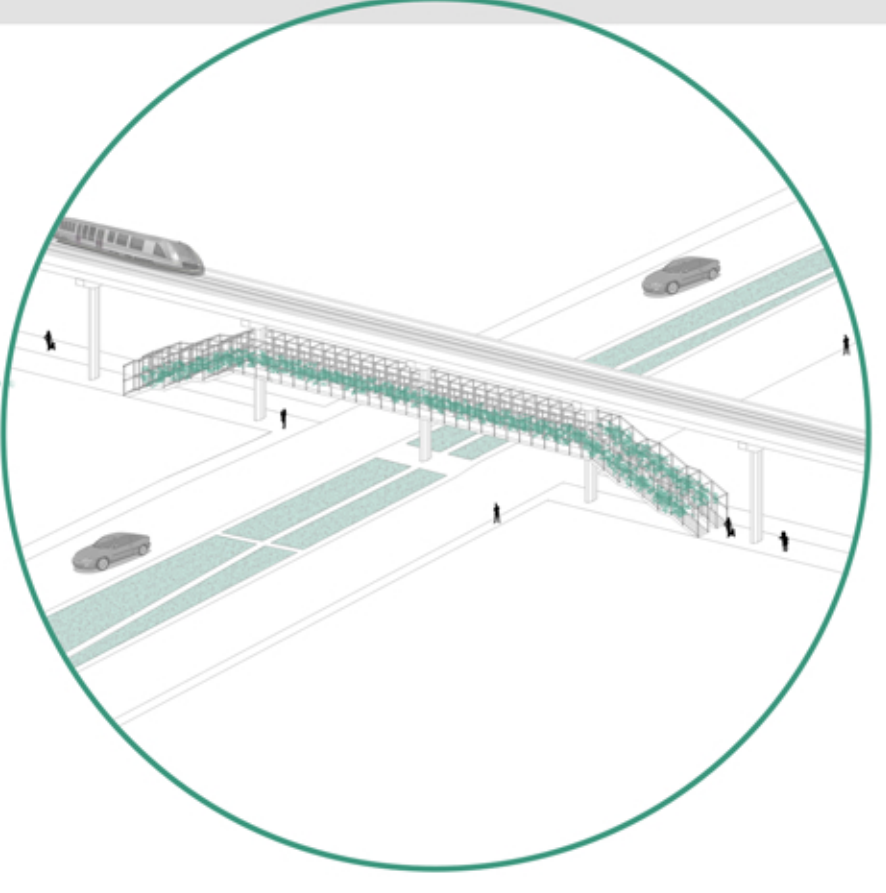
NO mas CERCADO

CONVERSION DE LA HUMEDAD EN AGUA POTABLE
 MEJORA DE LOS ACTIVOS EXISTENTES
 PEATONALIZACION DE LA ZONA
 ATRACCIONES TURISTICAS
 VENTILACION NATURAL
 NUEVAS CONEXIONES
 VIVIENDAS PARA TODOS
 IDENTIDAD COMO CULTURA Y TRABAJO

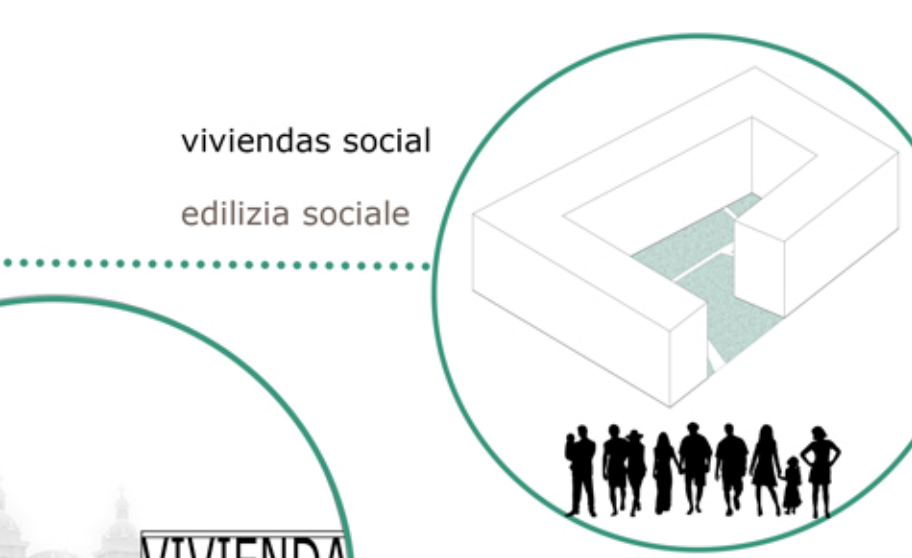
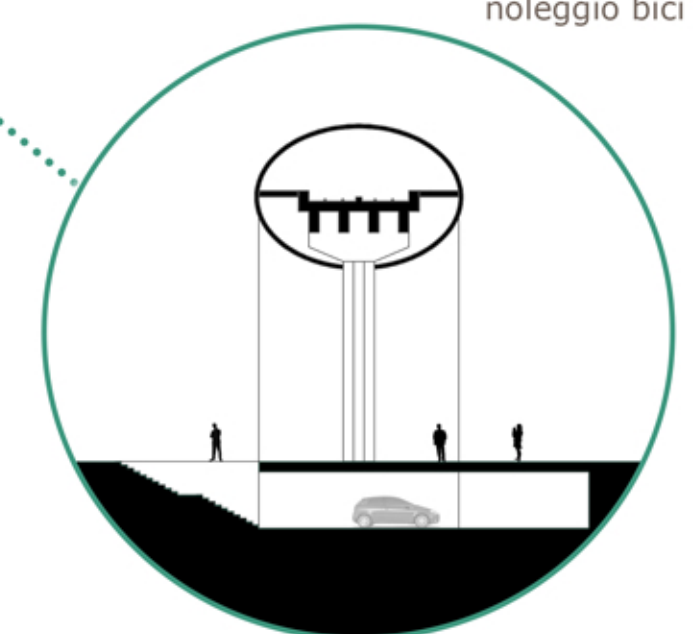
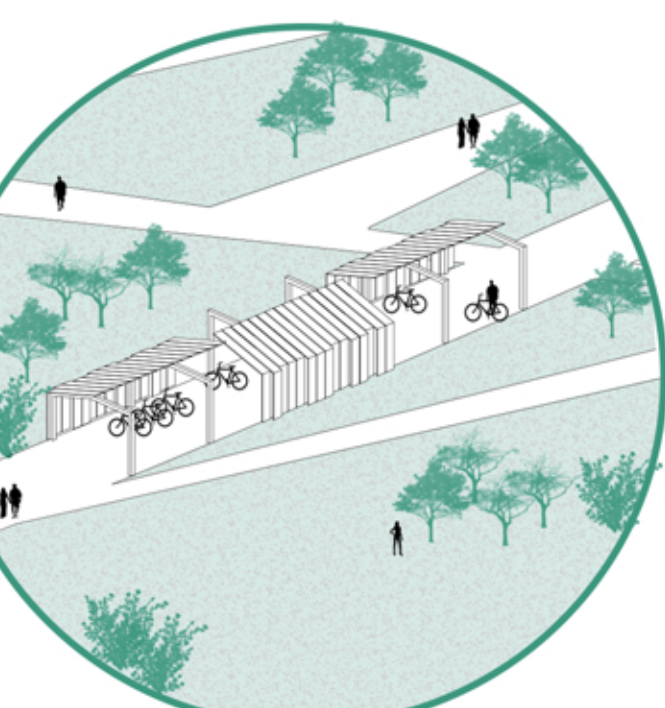
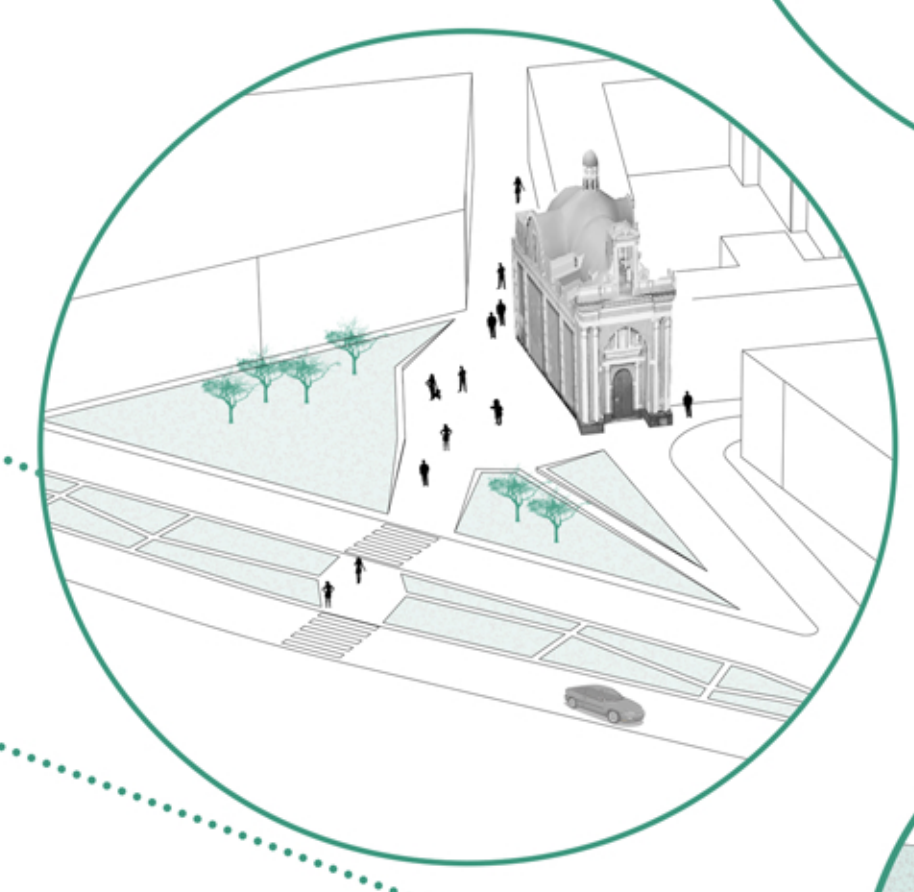
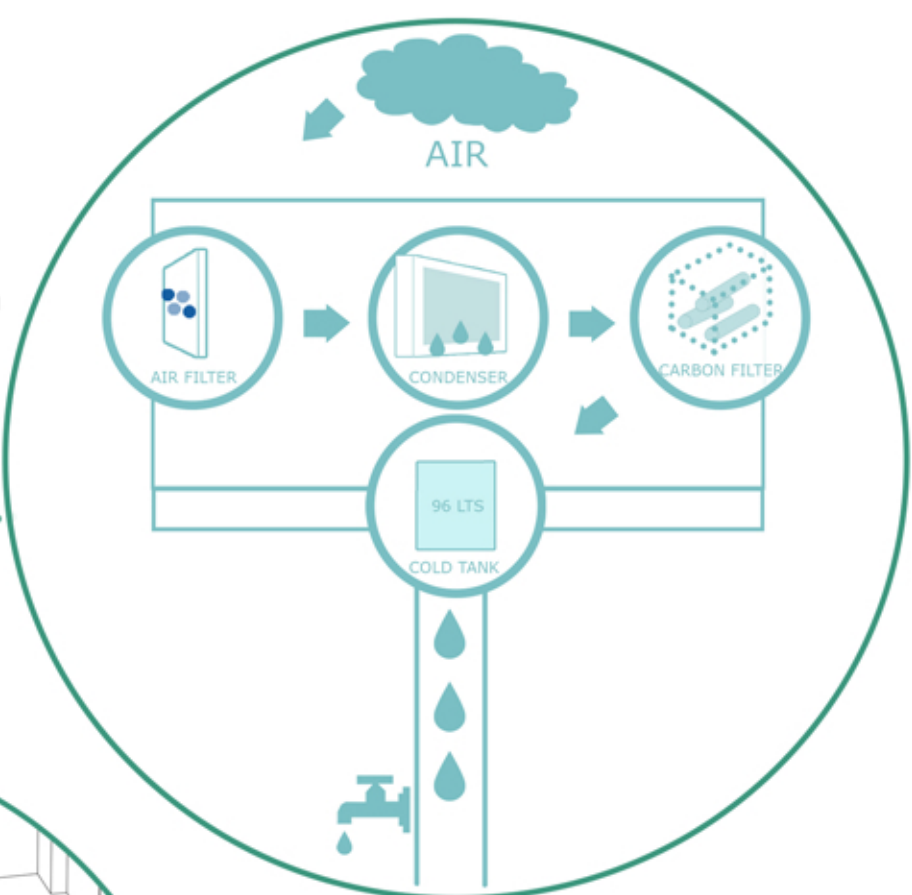


paso de peatones en altura
collegamento con el "parque Rimac"

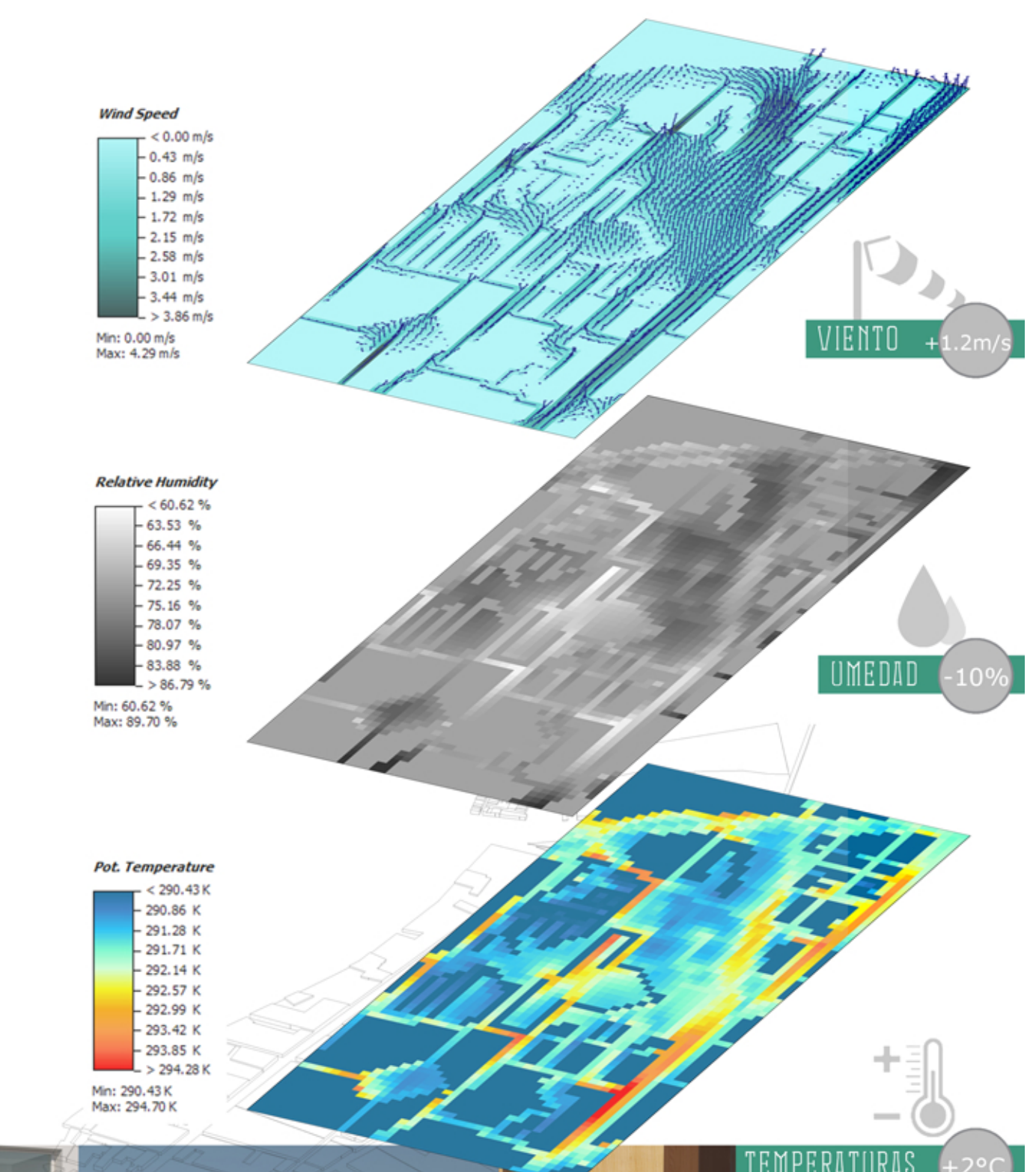
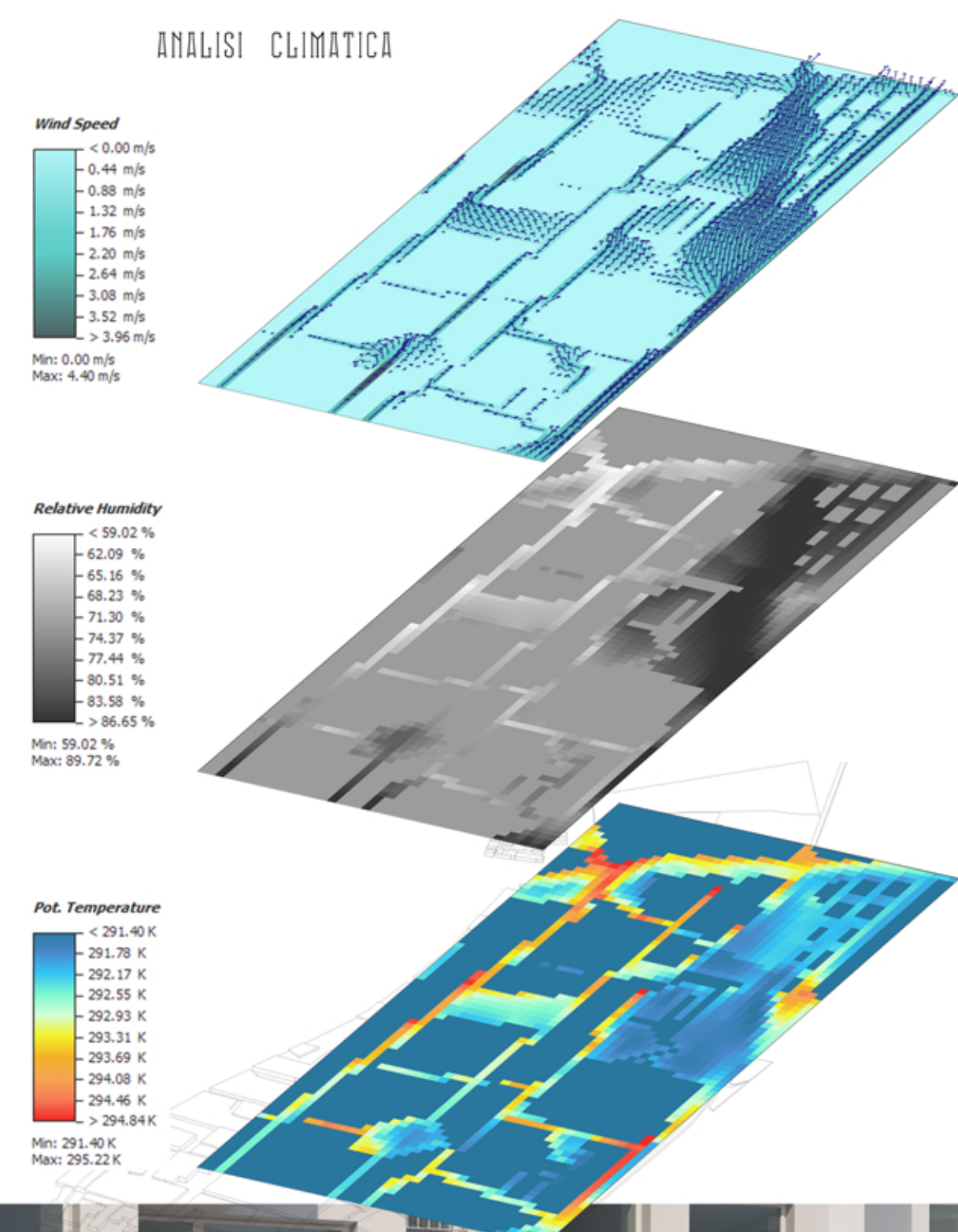
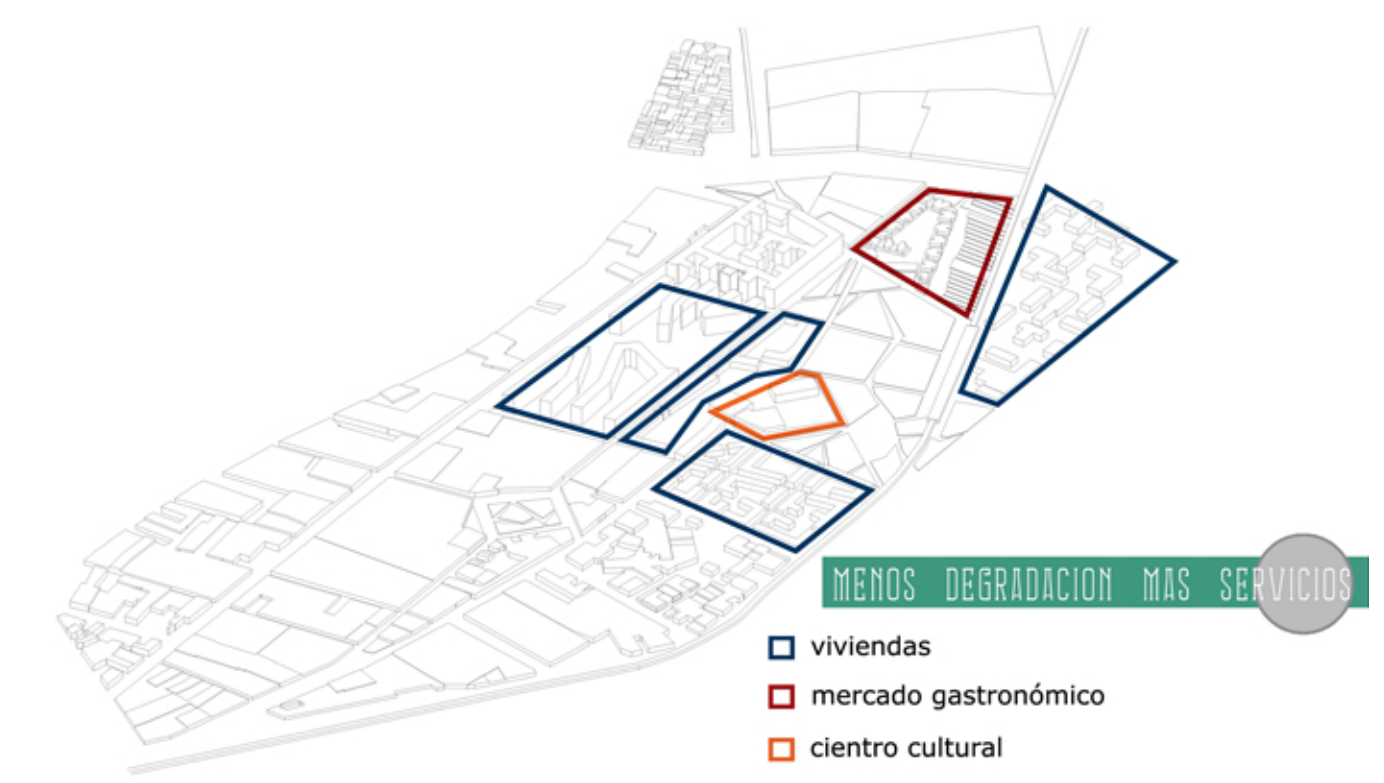
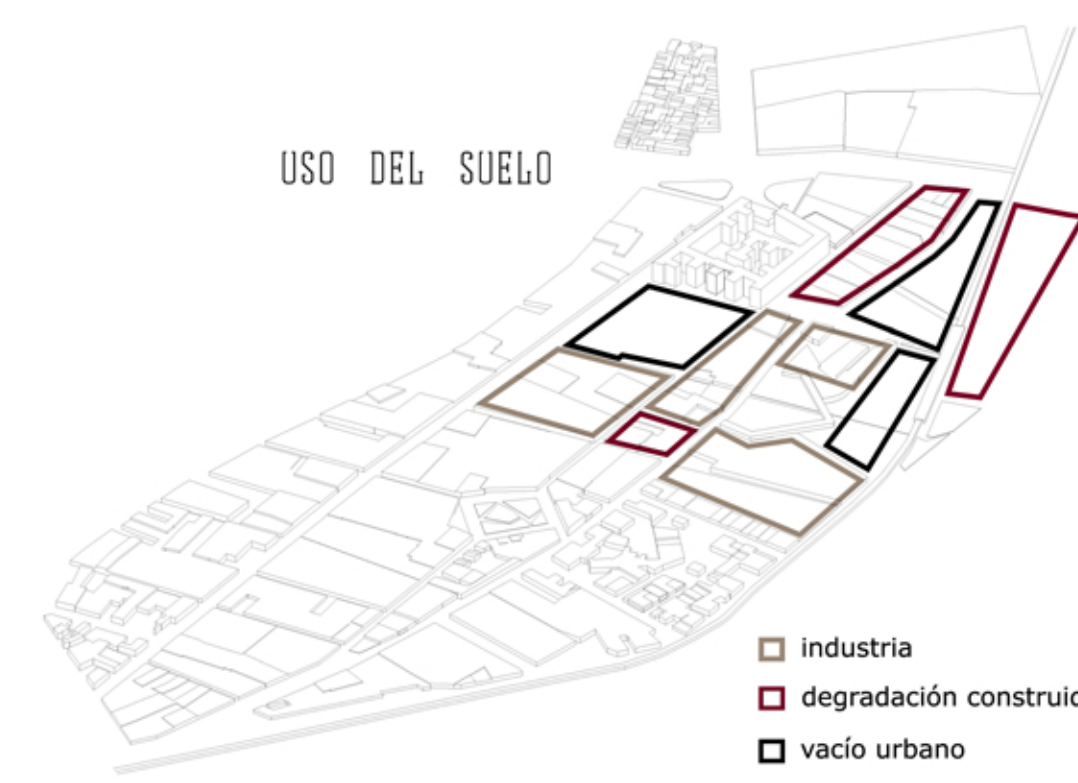
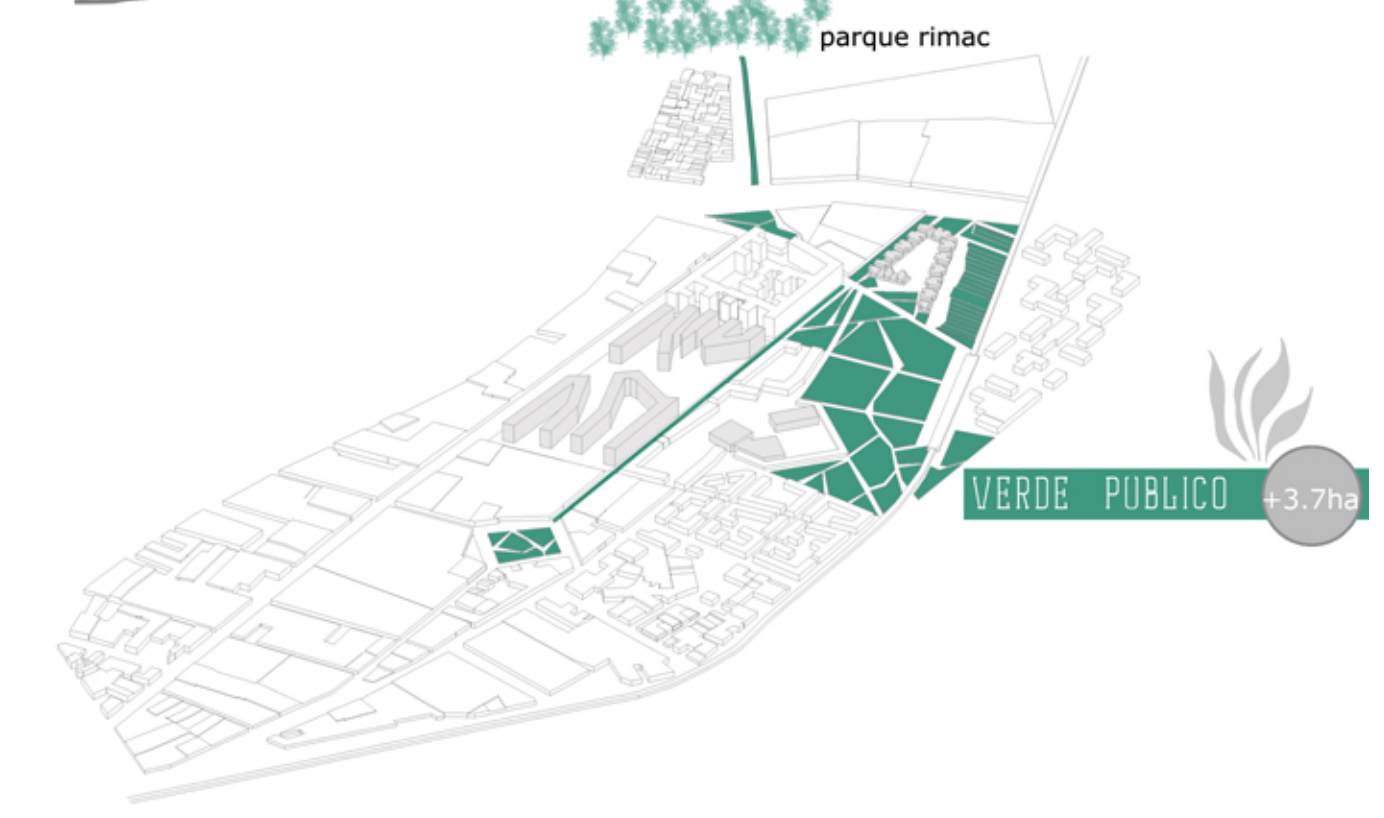
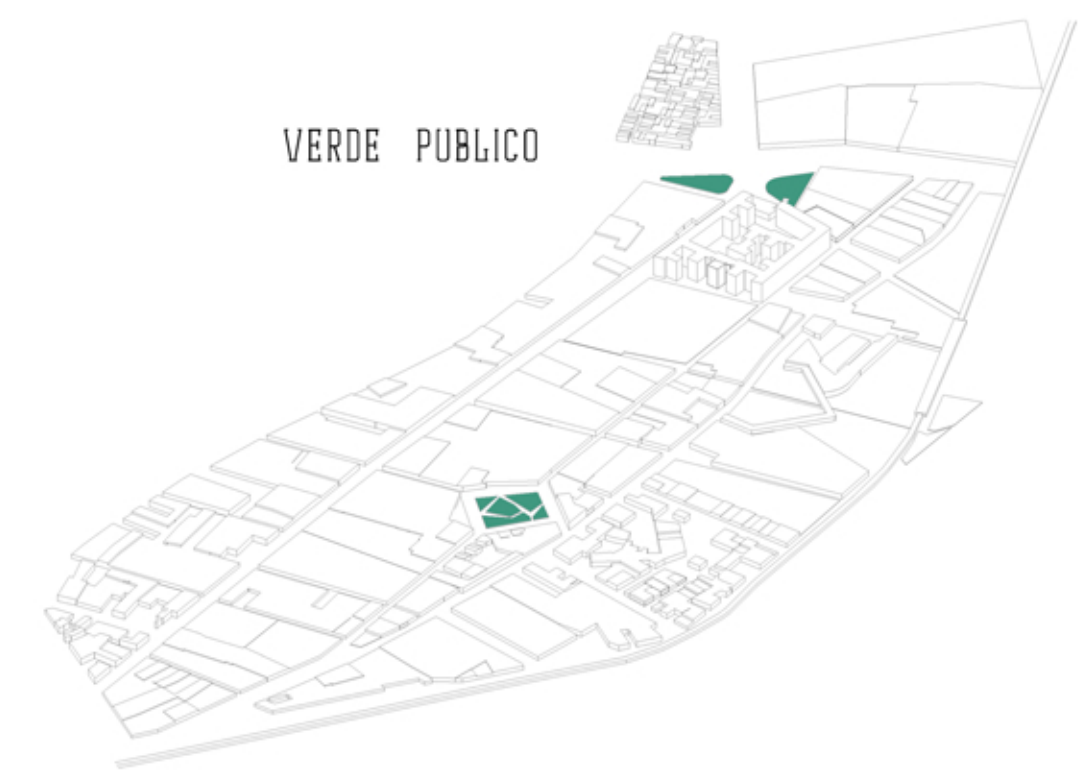
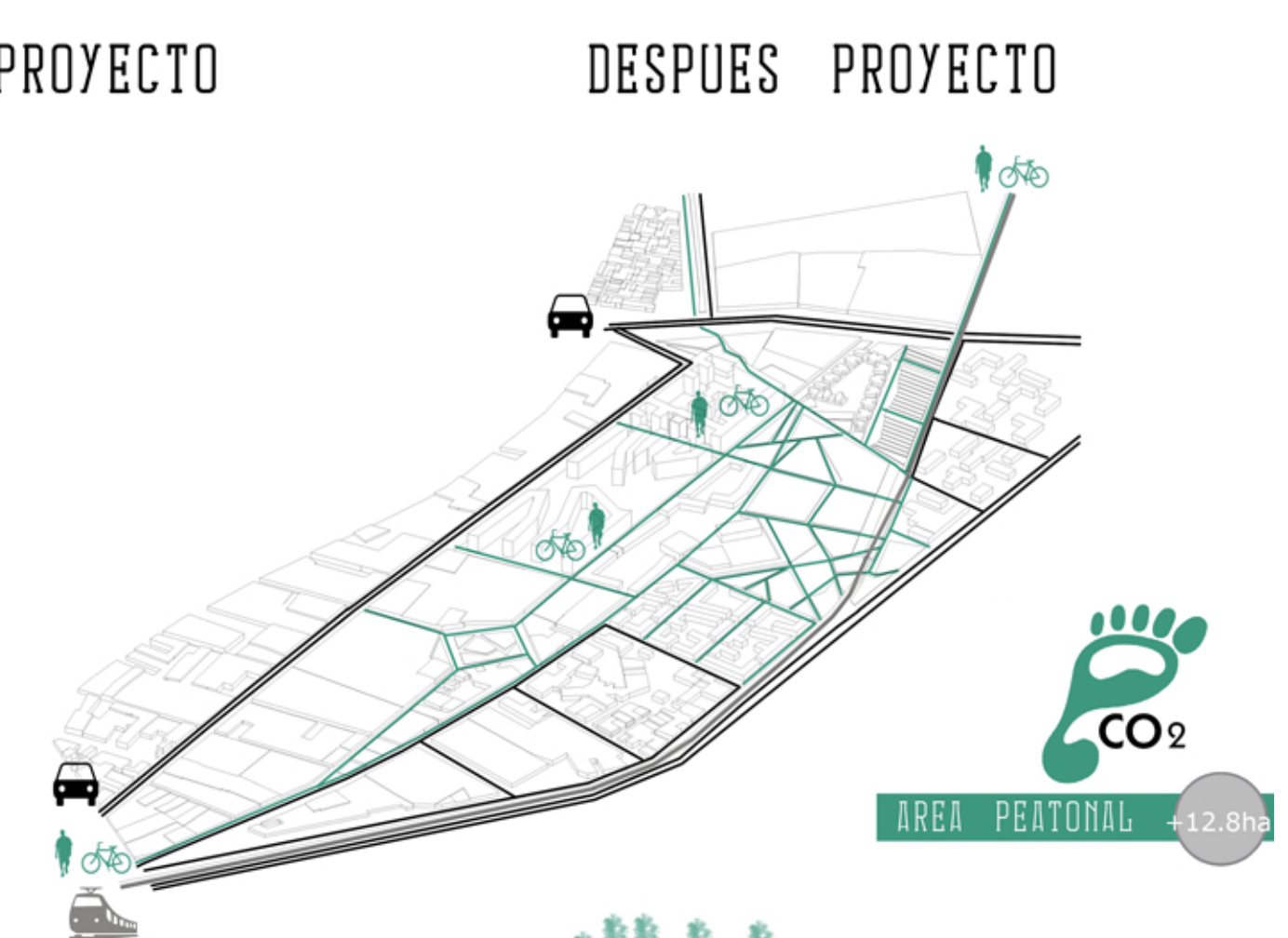
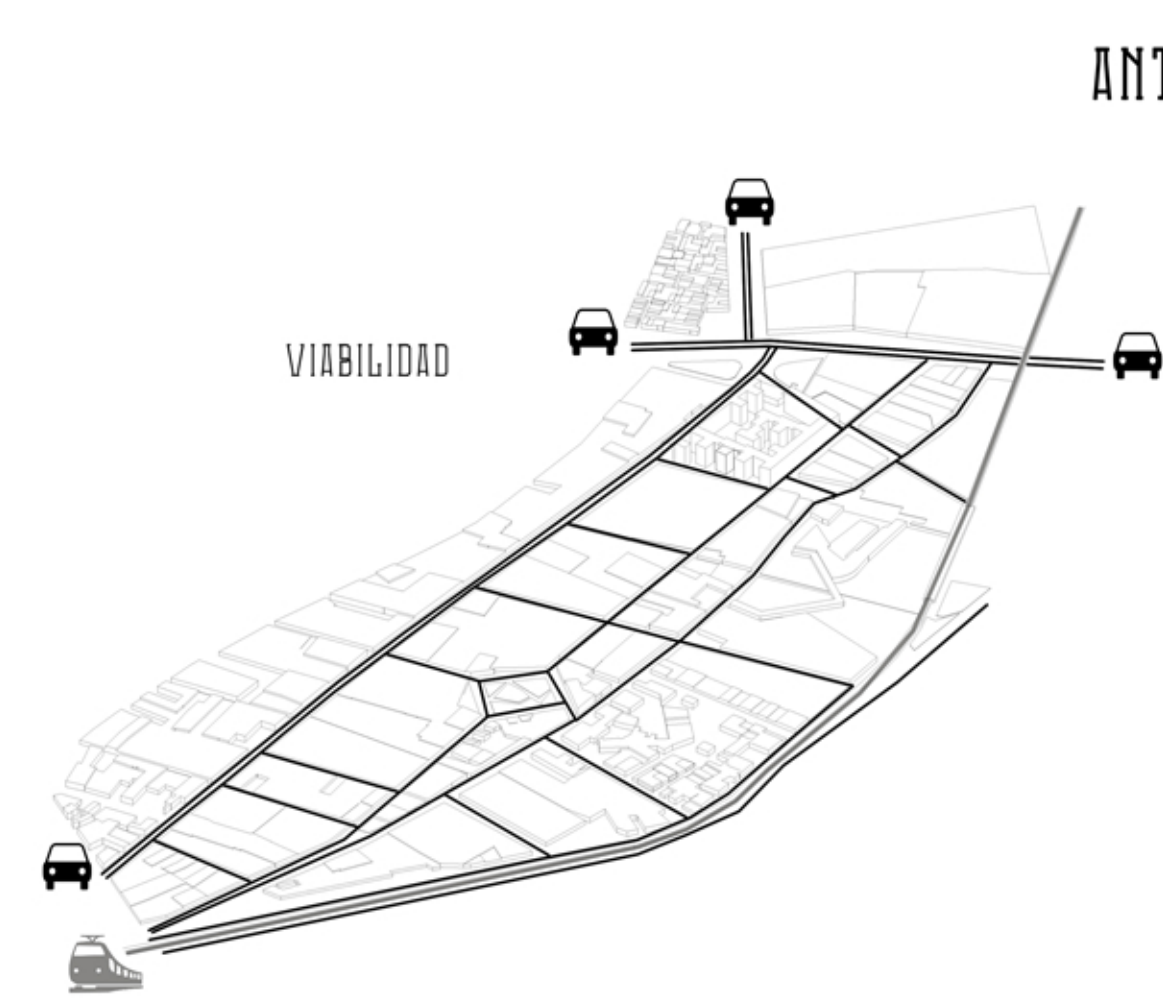
paso de peatones en altura
atravesamiento pedonale in quota



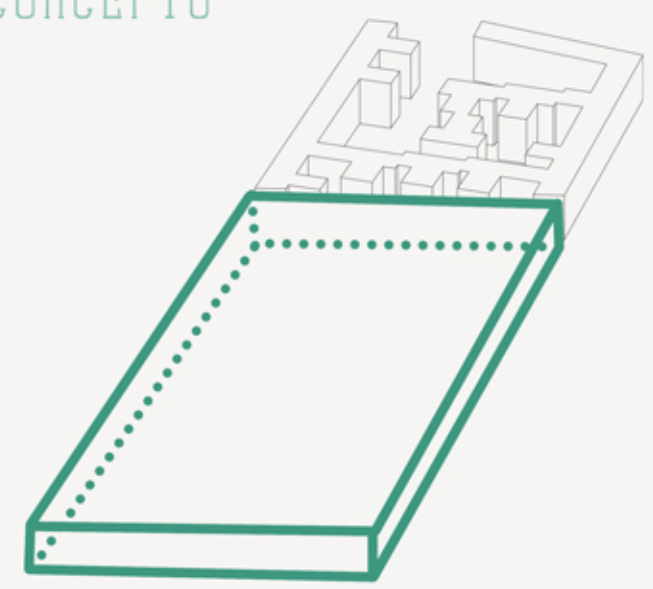
conversion de la humedad atmosferica en agua potable (UTEc)
 riconversione dell' umidita atmosferica in acqua potabile (UTEc)



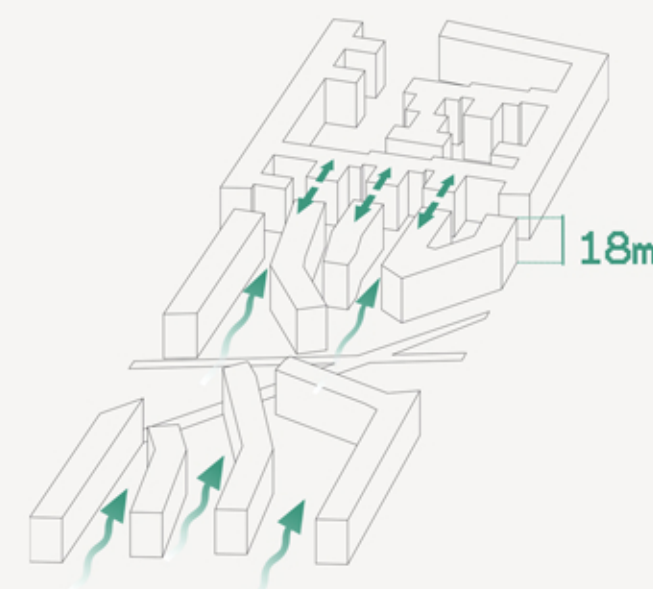
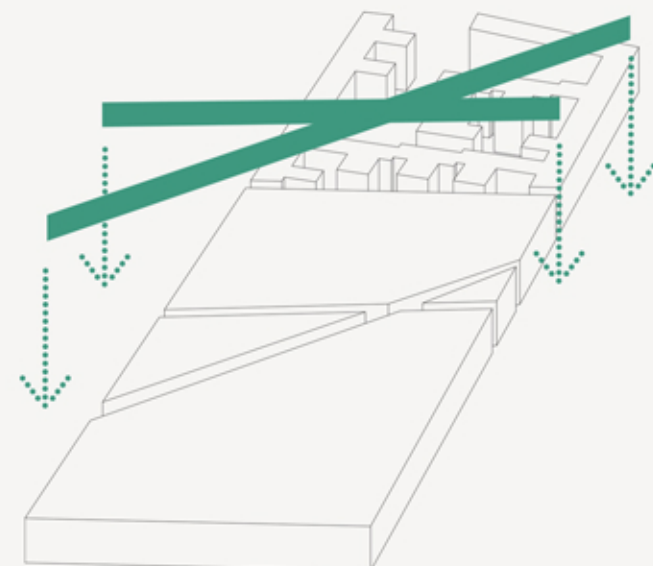
regeneración avenida Conchucos
qualificazione viale Conchucos



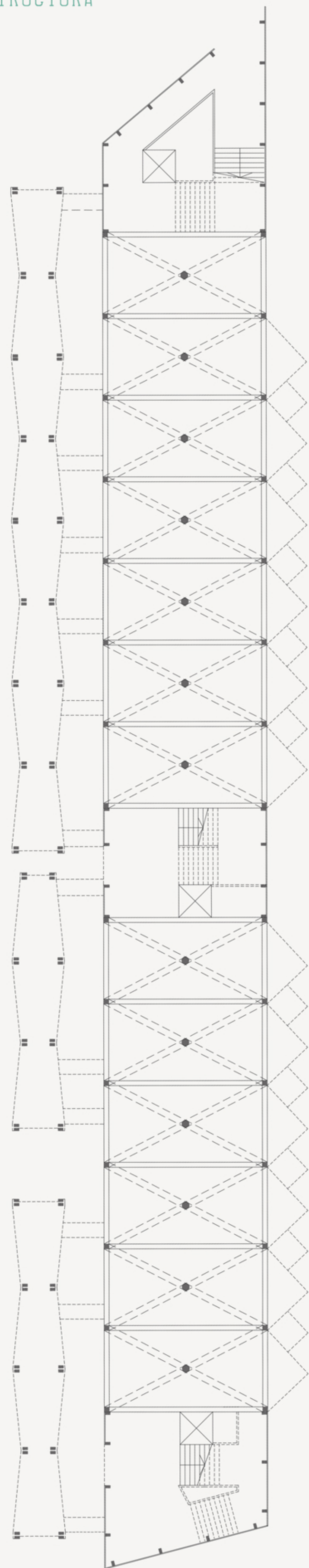
- -
 -
 -
- CONCEPTO



site area
24.000 mq



ESTRUCTURA



PLANTA COBERTURA



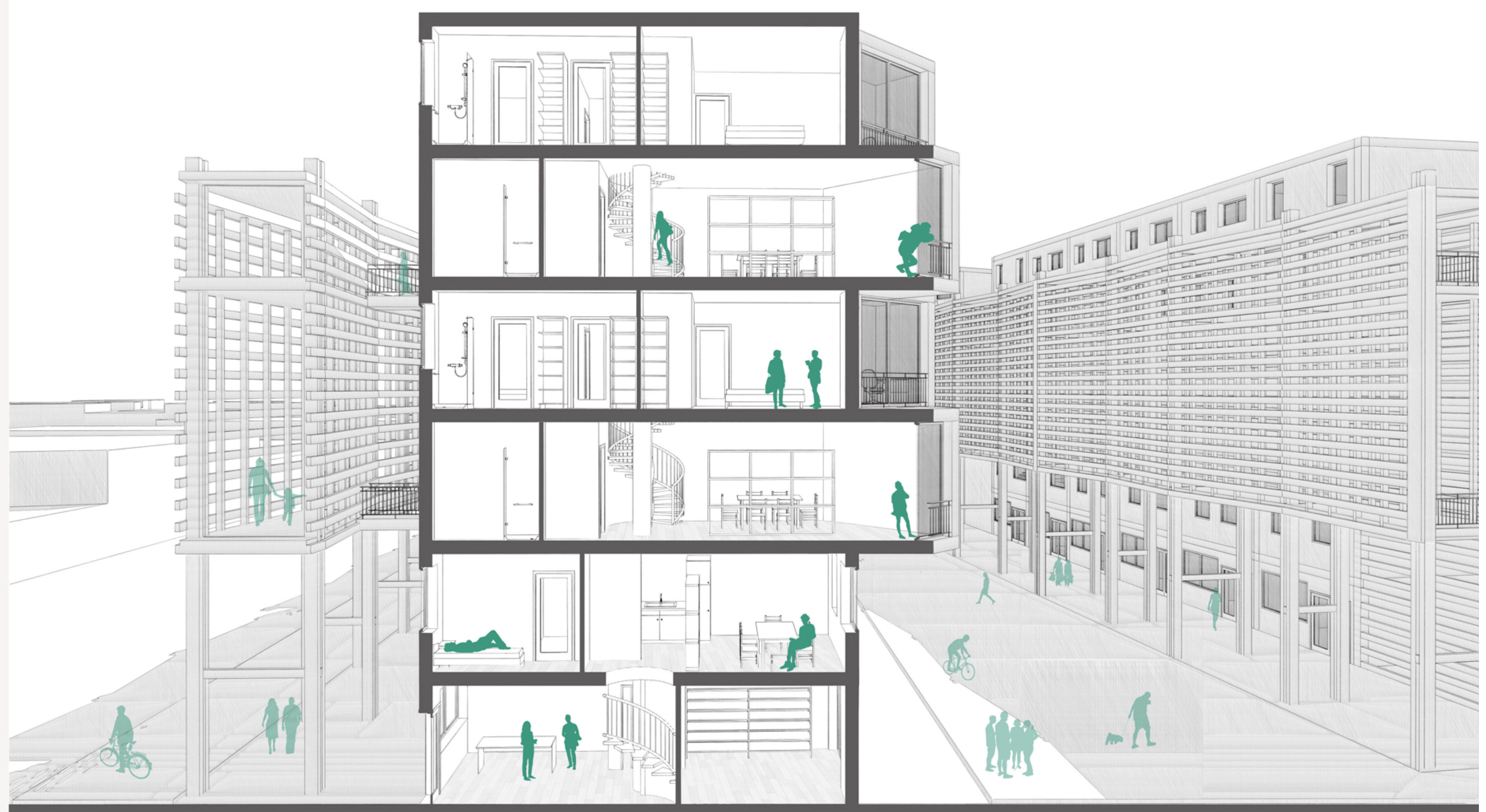
DUPEX TIPOLOGIA 1

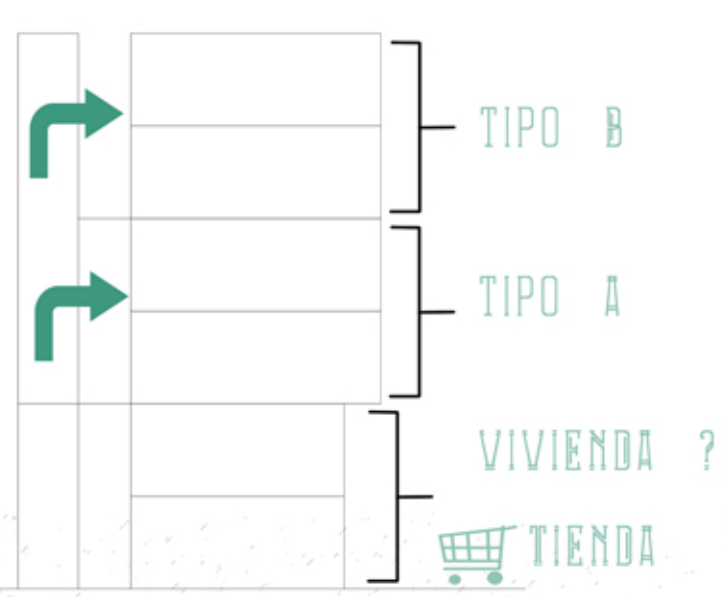
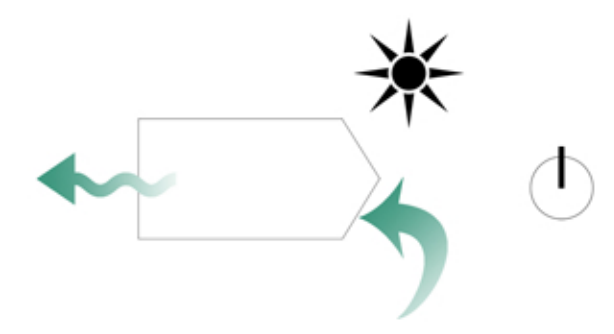
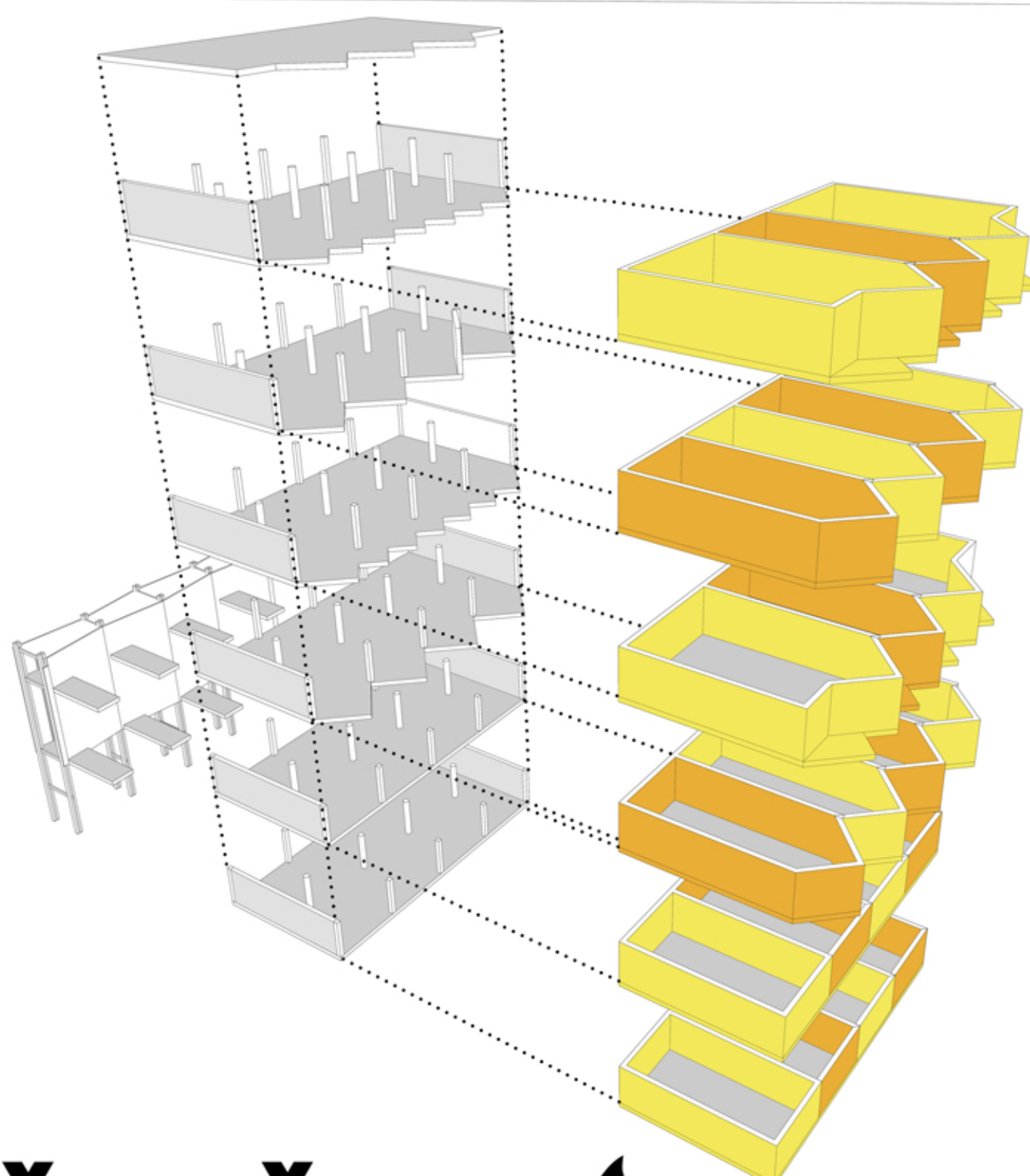
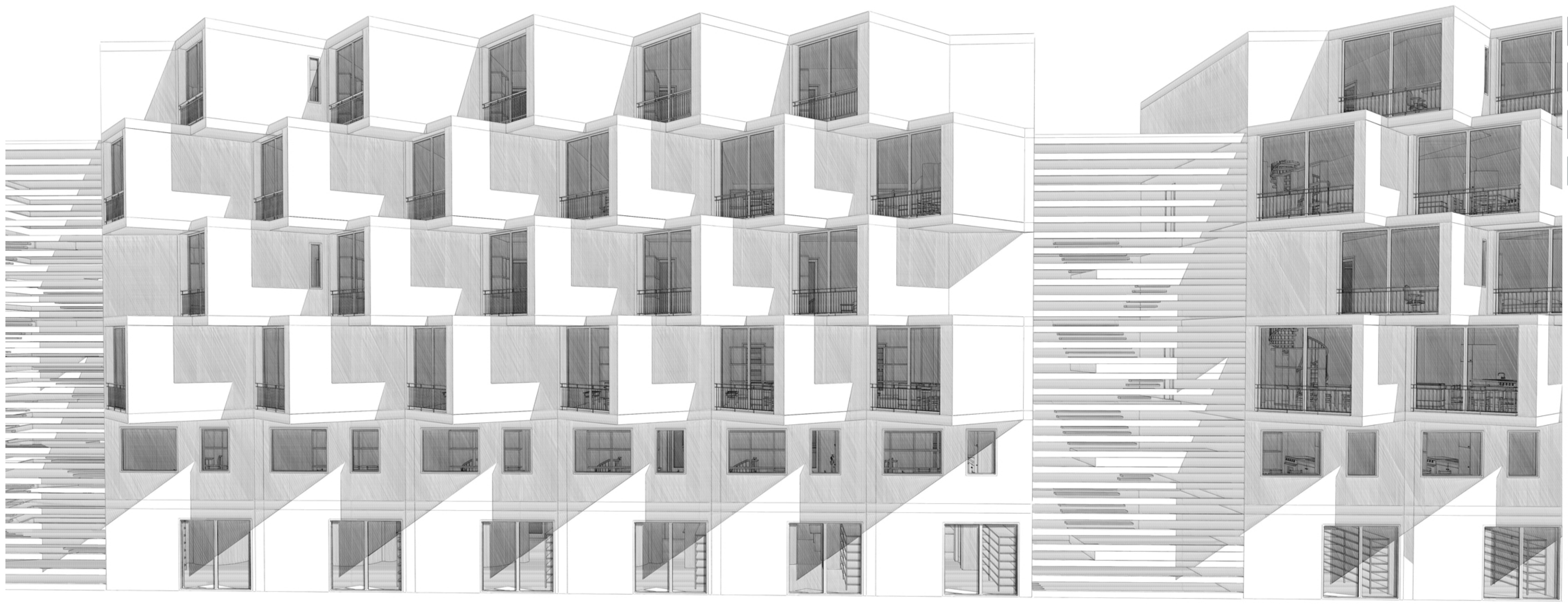


DUPEX TIPOLOGIA 2

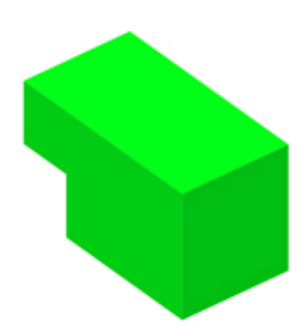


DUPEX TIPOLOGIA 3





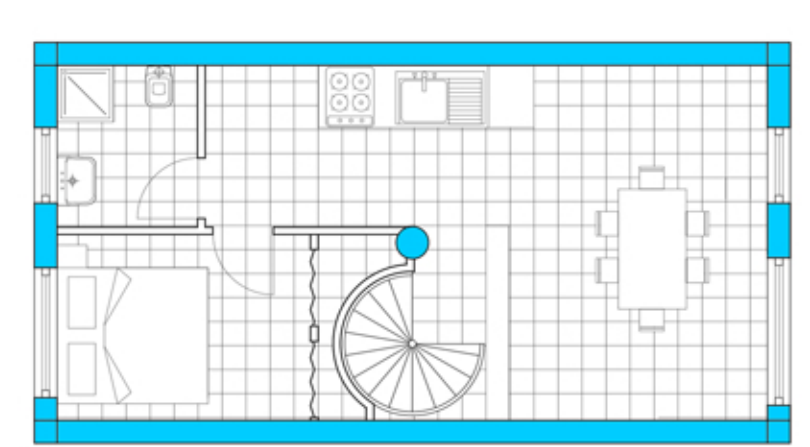
TIP. 1



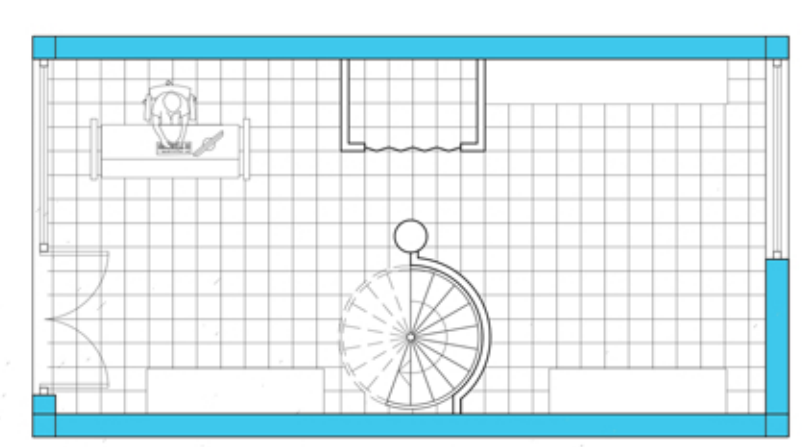
TIP. 4



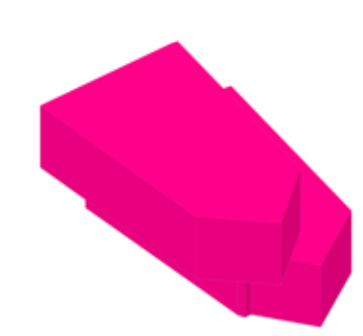
PLANTA SEGUNDO PISO/TIP.1



PLANTA PRIMERO PISO/TIP.1



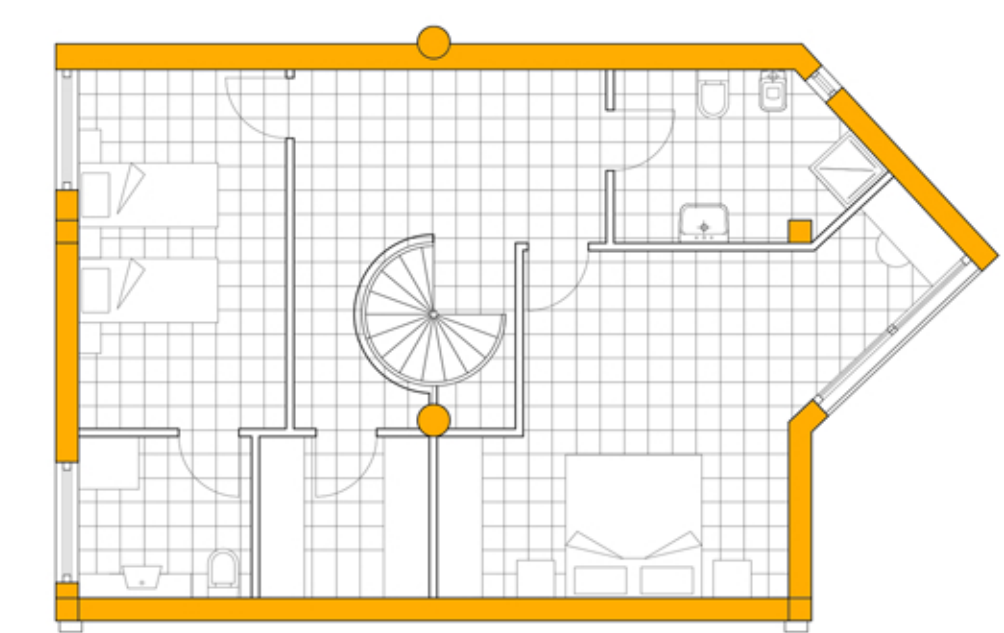
TIP. 2



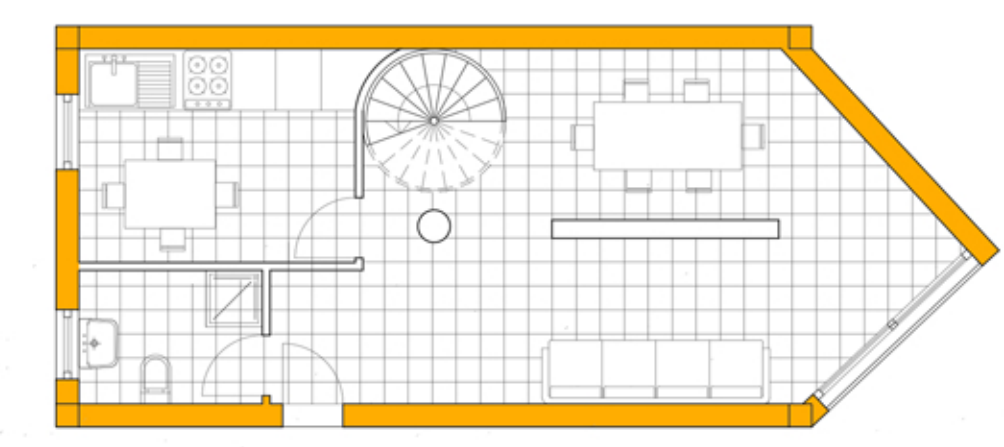
TIP. 5



PLANTA SEGUNDO PISO/TIP.2



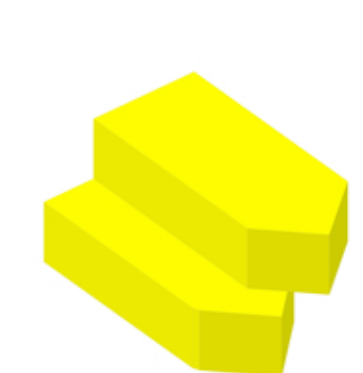
PLANTA PRIMERO PISO/TIP.2



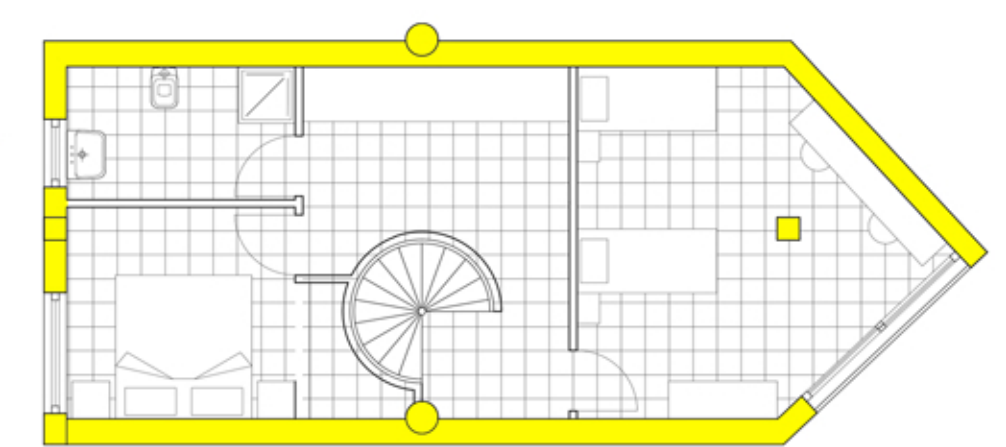
TIP. 3



TIP. 6



PLANTA SEGUNDO PISO/TIP.3



PLANTA PRIMERO PISO/TIP.3

