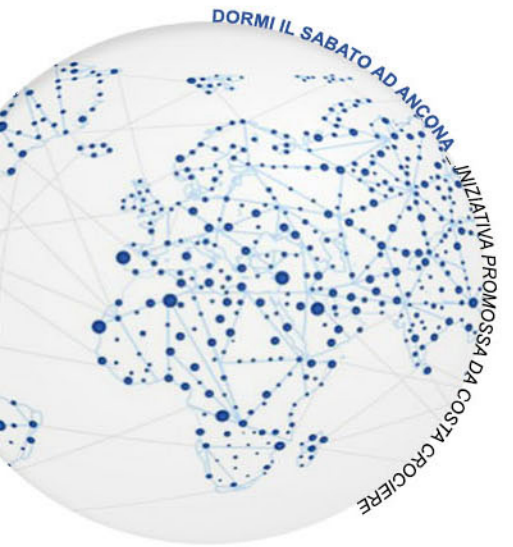
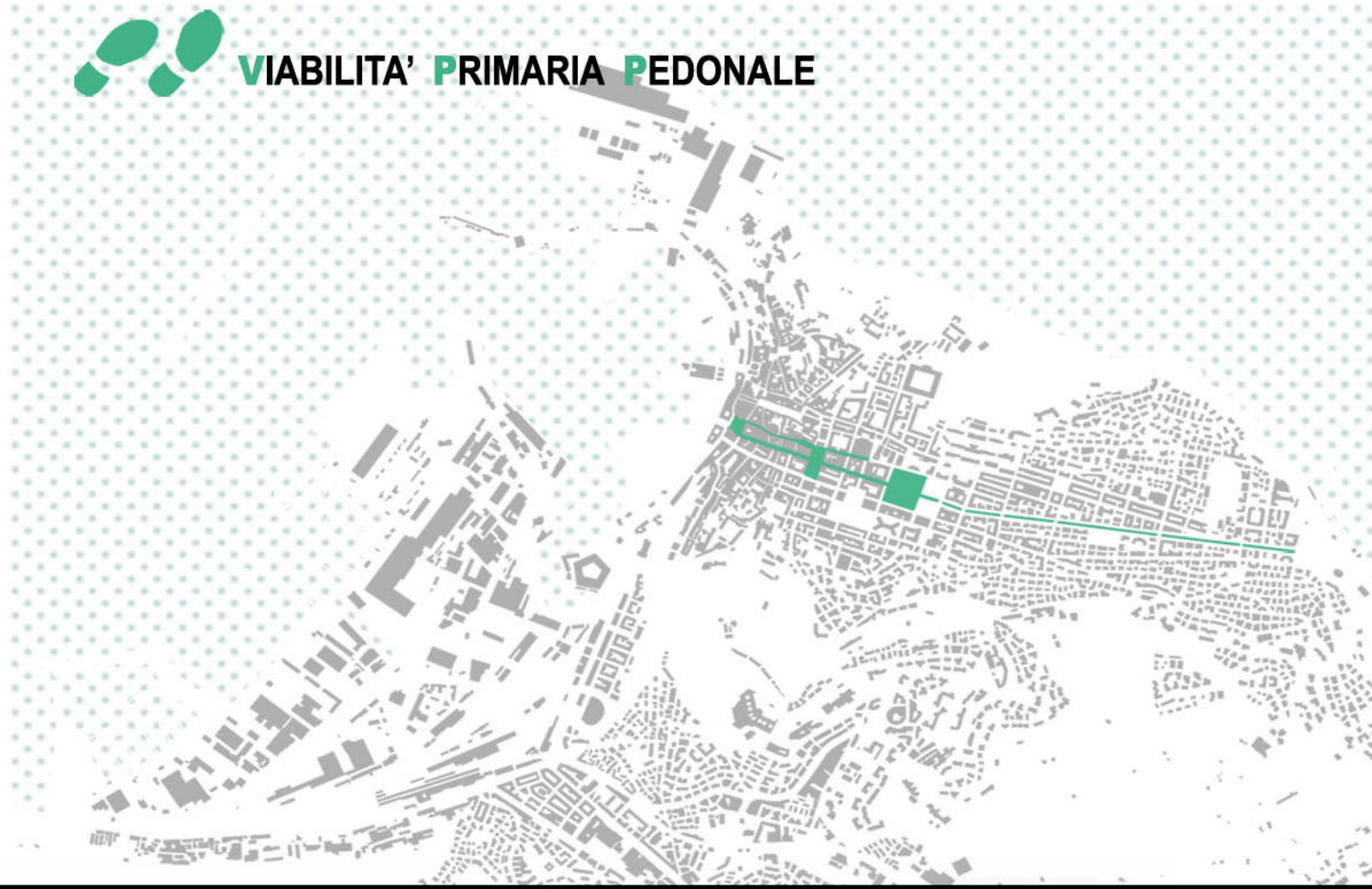
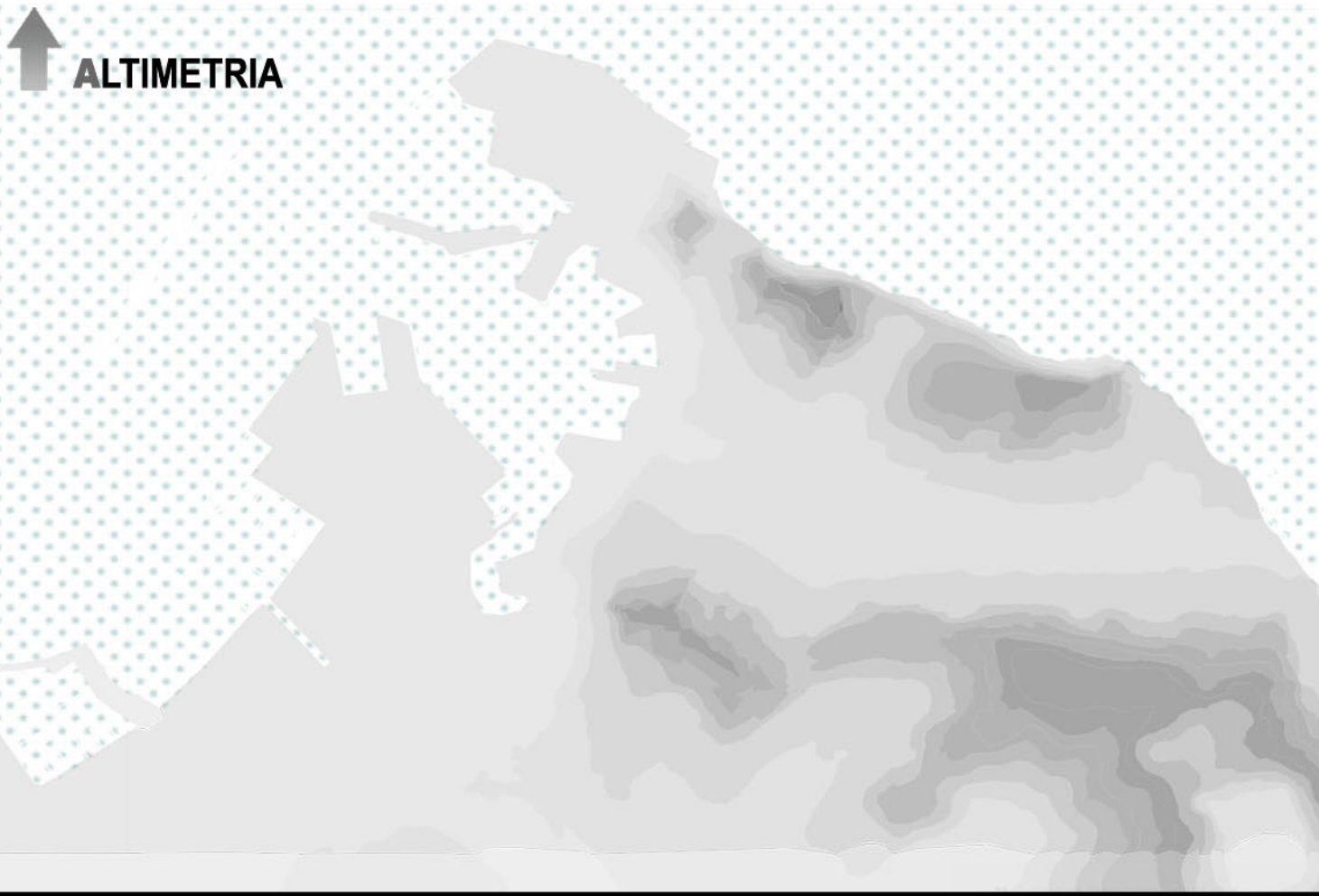




Laureando: Marco Castagnari



Corriere Adriatico

11.11.2014
ANCONA E PROVINCIA
Uscita ad Ovest, via libera dal ministero. Per l'opera stanziati 480 milioni di euro
ANCONA - Il ministero dell'Economia ha firmato il decreto interministeriale che approva la convenzione che darà il via ai lavori della bretella di collegamento tra il Porto di Ancona e l'A14. Ne dà notizia il vice ministro delle Infrastrutture Riccardo Nencini.

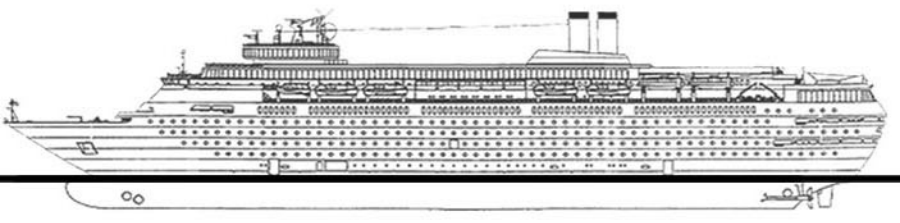
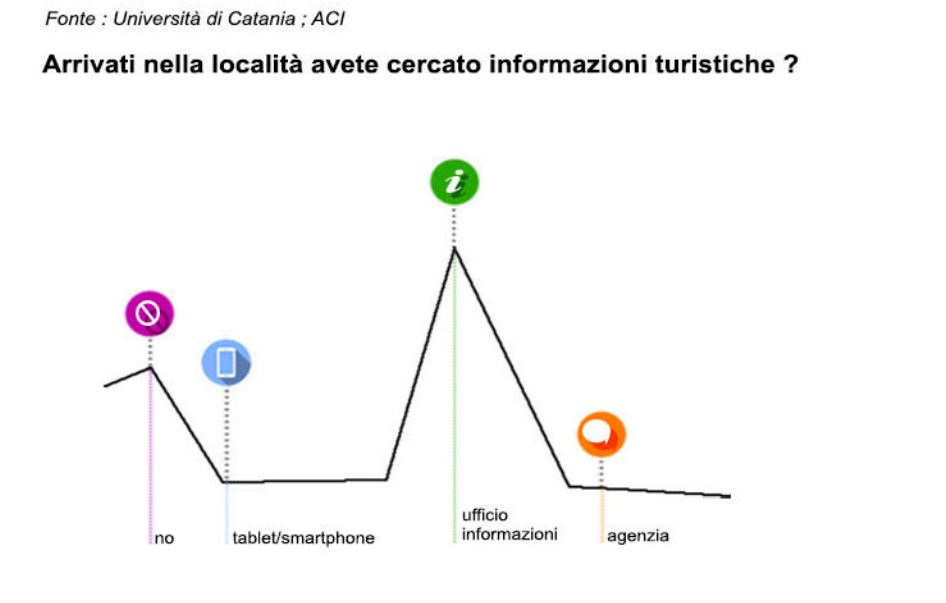
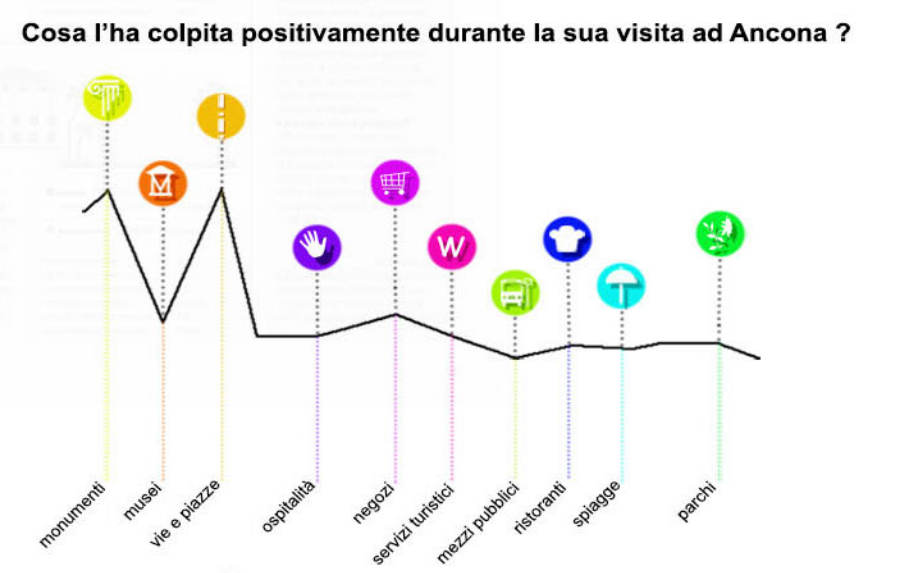
Il Sole 24 ORE

19.06.2012
Il futuro è una città con vista sul porto
Risorsa di energia rinnovabile, fattore d'identità, elemento strutturale di stimolo per il lavoro degli architetti. Nelle città che si aprono sul mare, l'acqua è una presenza decisiva per ripensare il tessuto urbano in chiave ecosostenibile. Tutto parte dalla riqualificazione dei waterfront, le aree del centro abitato a contatto con le onde. Laboratori di creatività, commerci ed innovazione.



il confronto

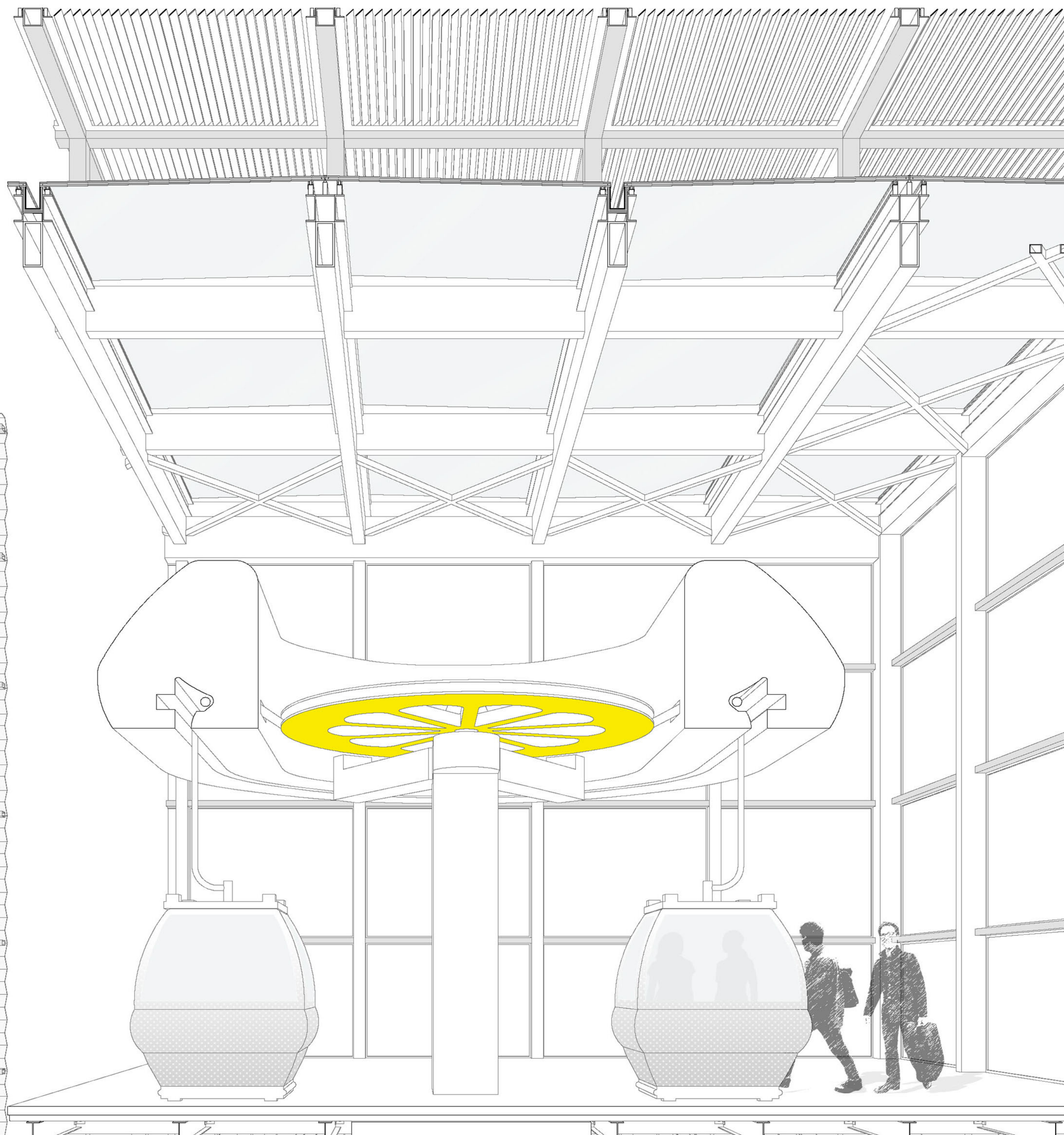
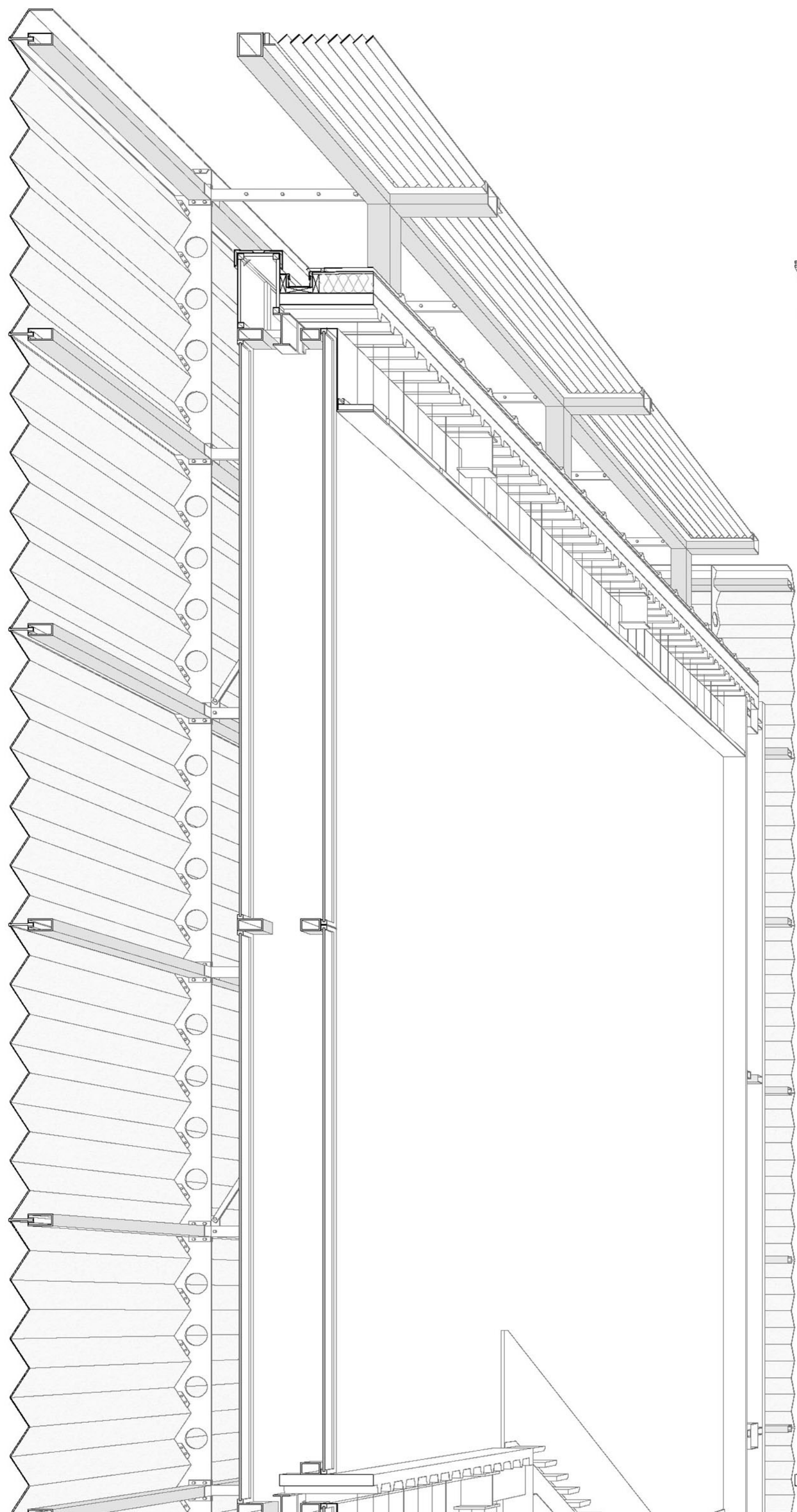
PORTATA PASSEGGIERI TRASPORTATI PER ORA	fino a 8/6.000
COSTI PER COSTRUIRE 1 KM IN EURO	3/4 milioni
VELOCITA' KM / H	fino a 45



REPORT STATISTICO_Progetto WELCOME to ANCONA

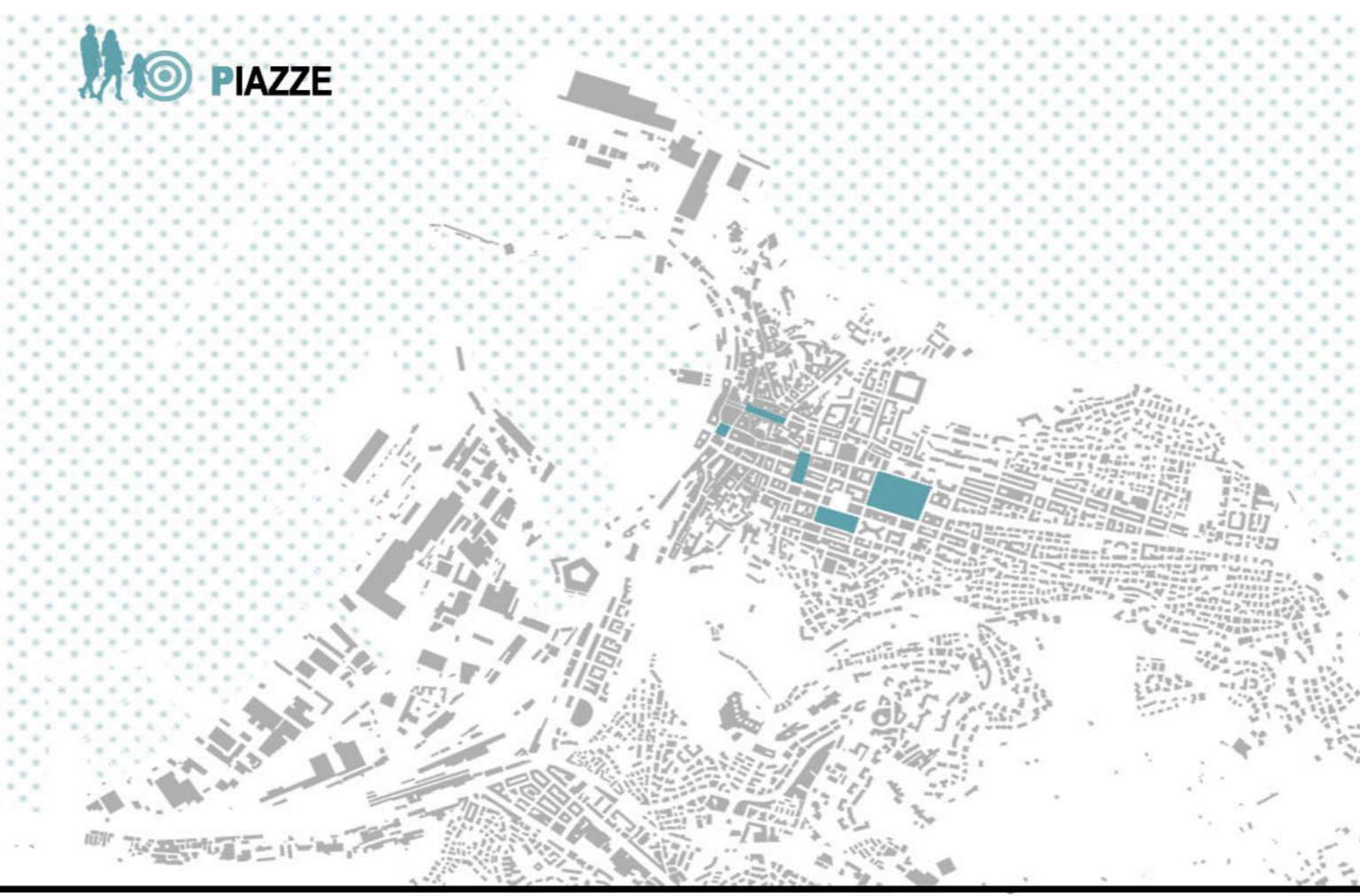
250.000 totale crocieristi transitati | 40.000 passeggeri imbarcati | 20.000 escursionisti | 145 approdi

Fonte: Osservatorio turistico regionale Unioncamere Marche

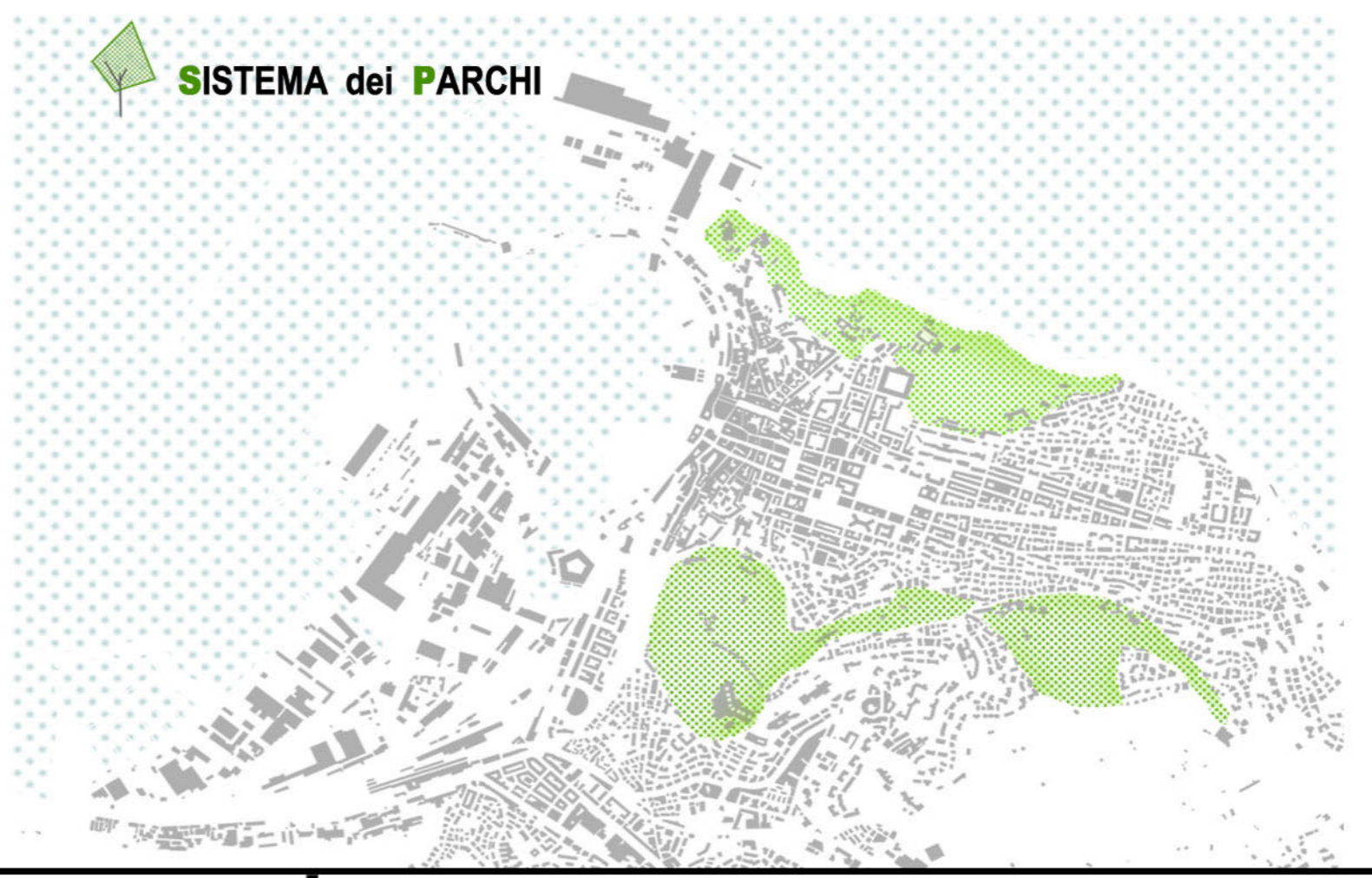




PIAZZE



SISTEMA dei PARCHI



24.000



1.400



COMPATIBILITA' CON ALTRI MEZZI

130 milioni

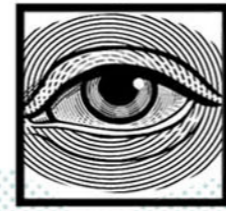
10 milioni

33

15/20

Km/h

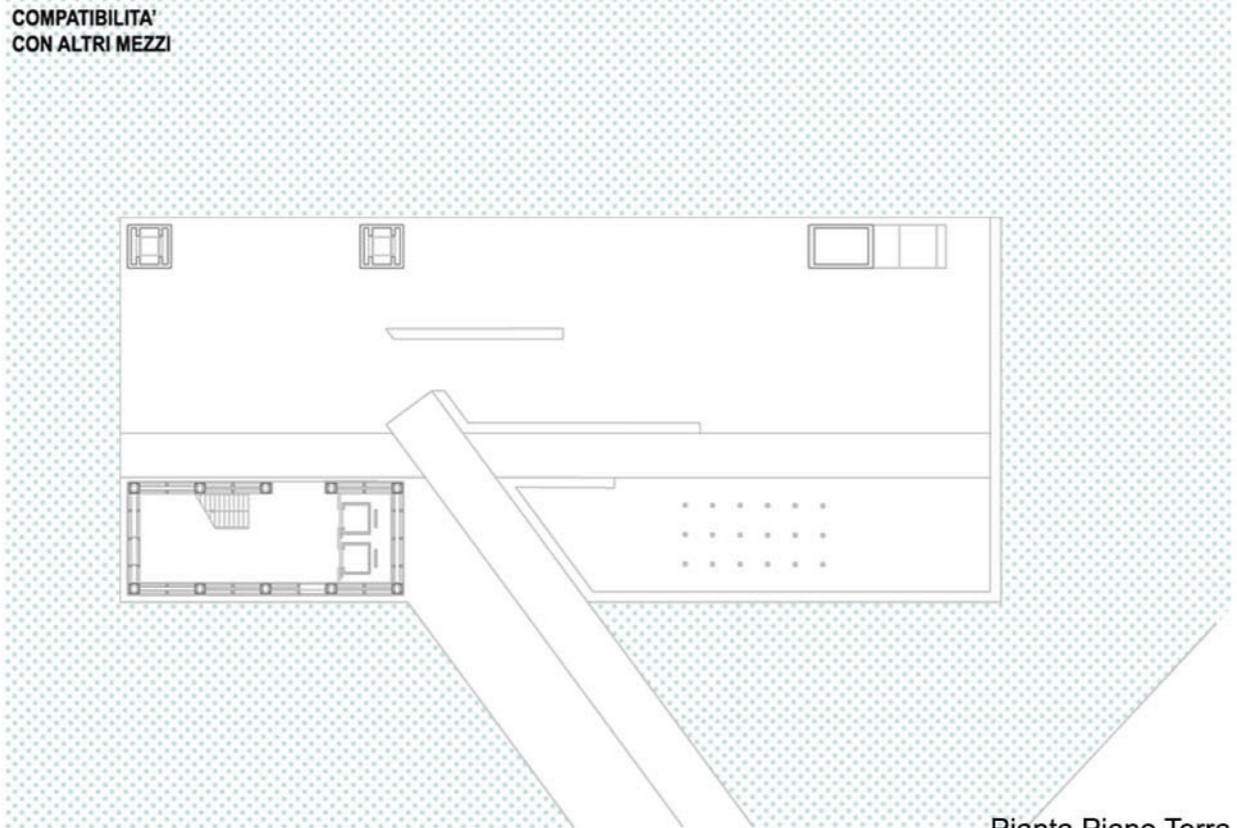
VELOCE



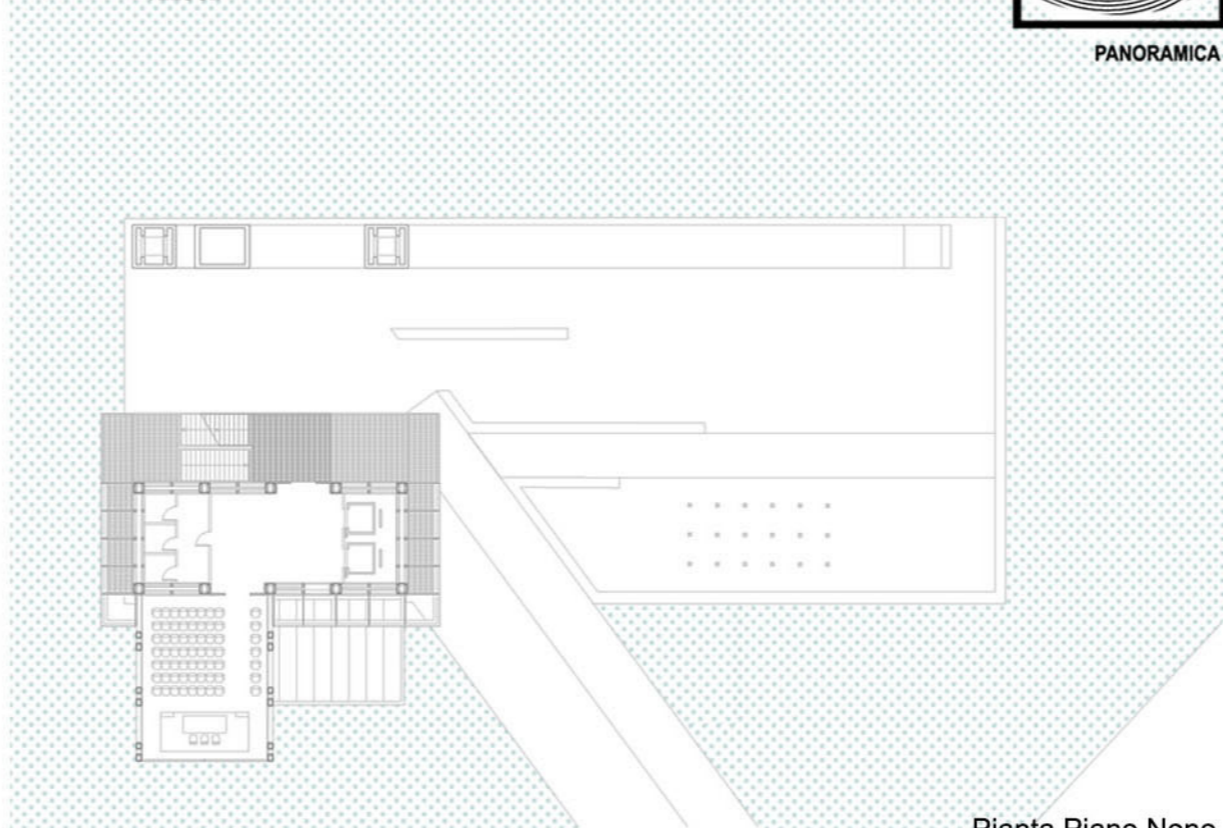
PANORAMICA



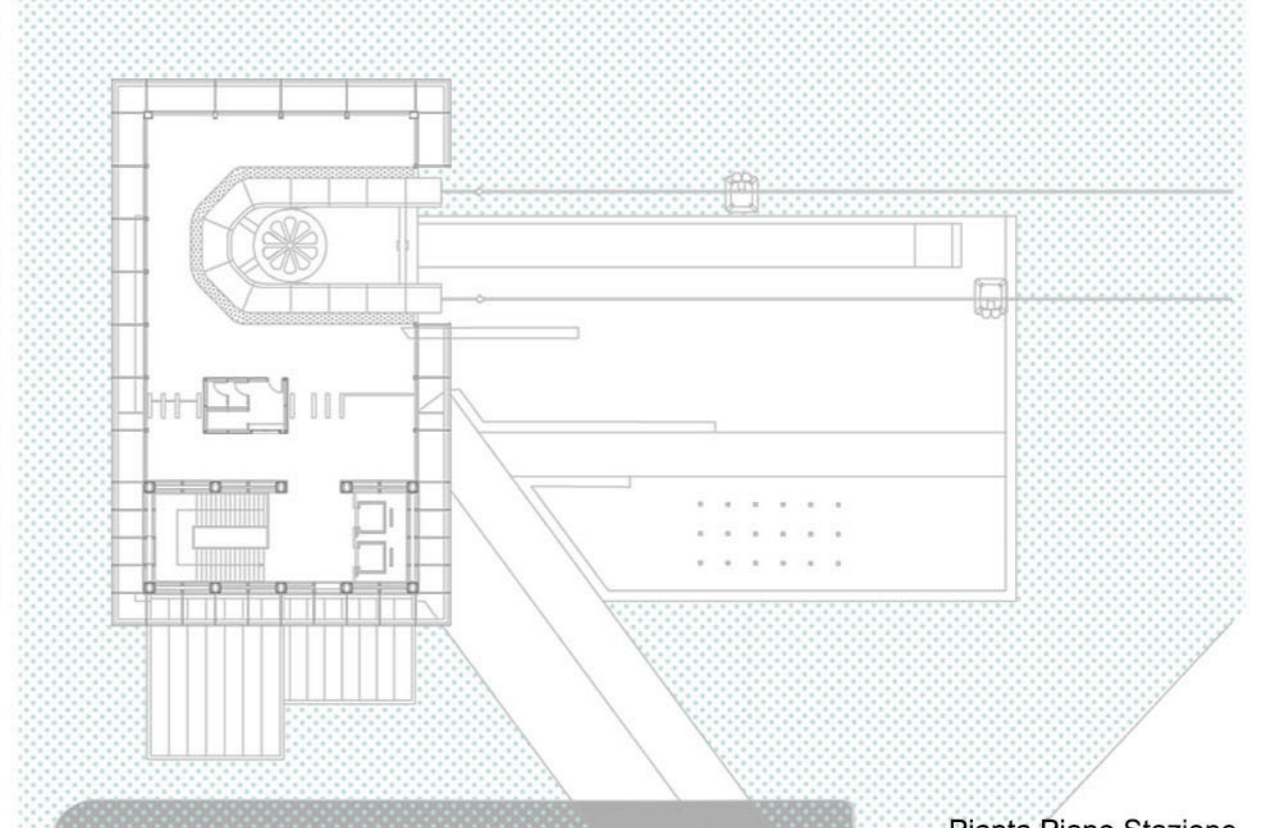
ACCESSIBILITA' IMMEDIATA



Pianta Piano Terra

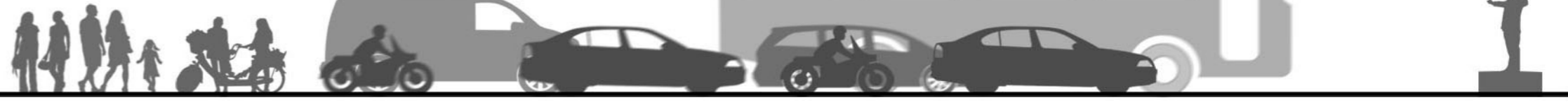


Pianta Piano Nono

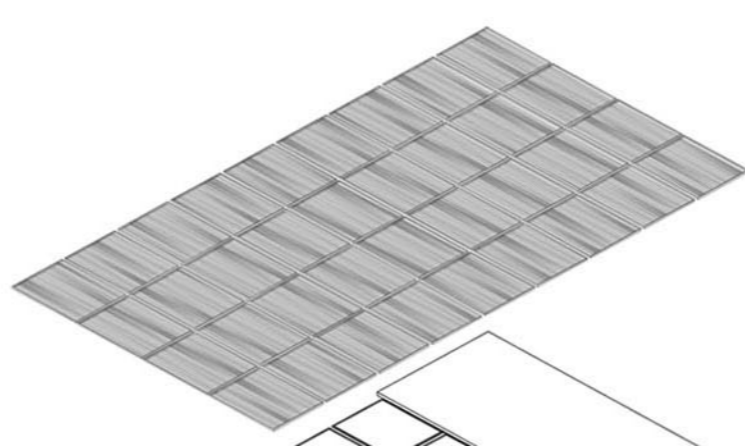
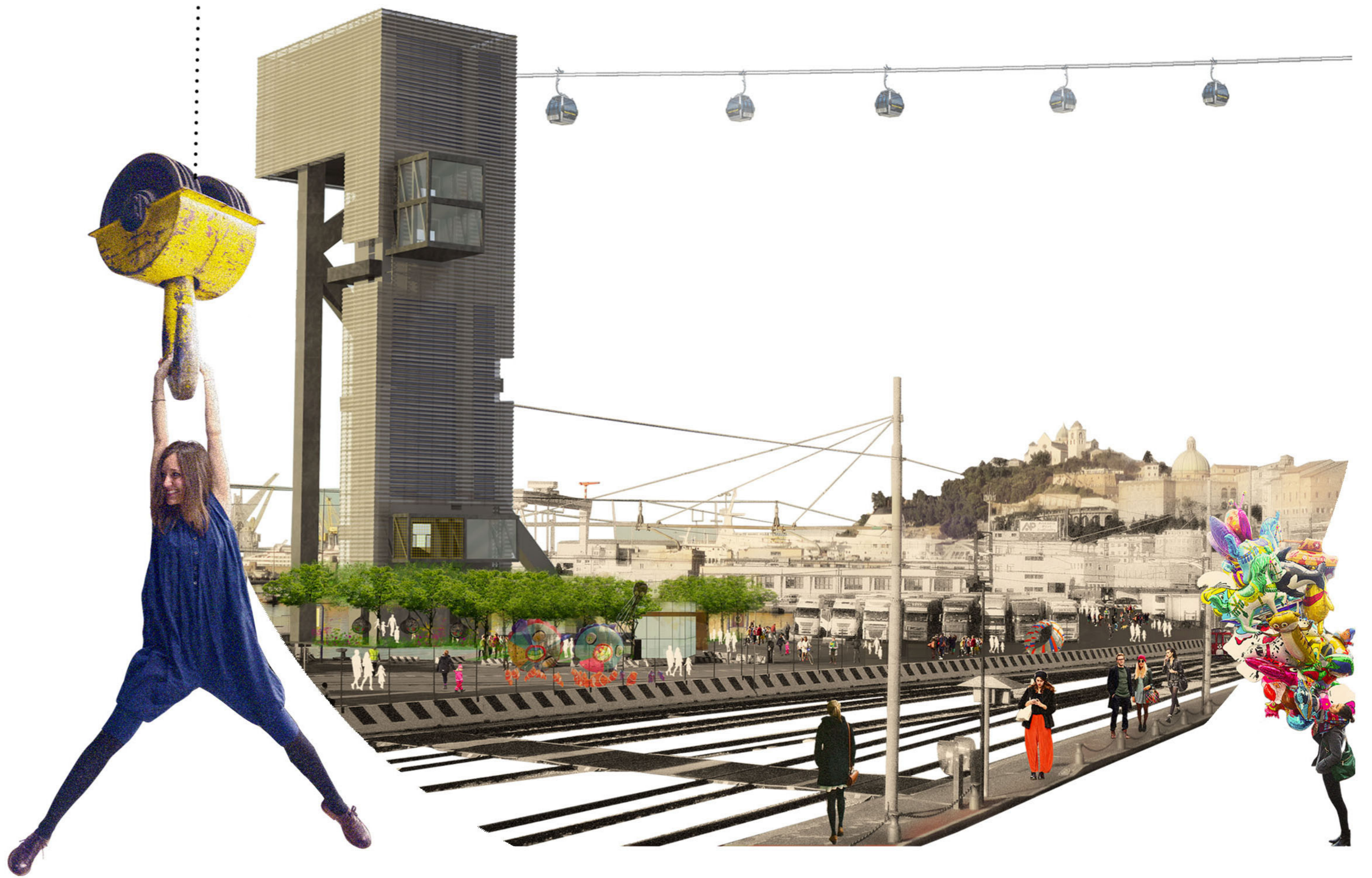
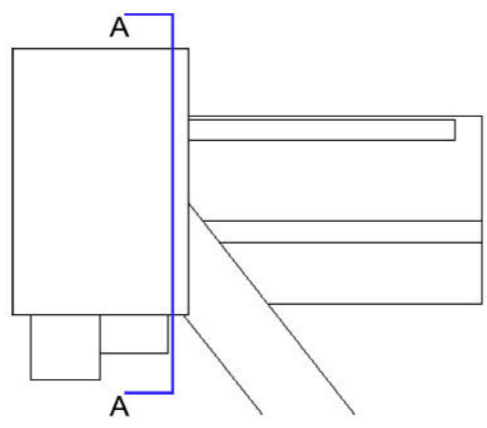
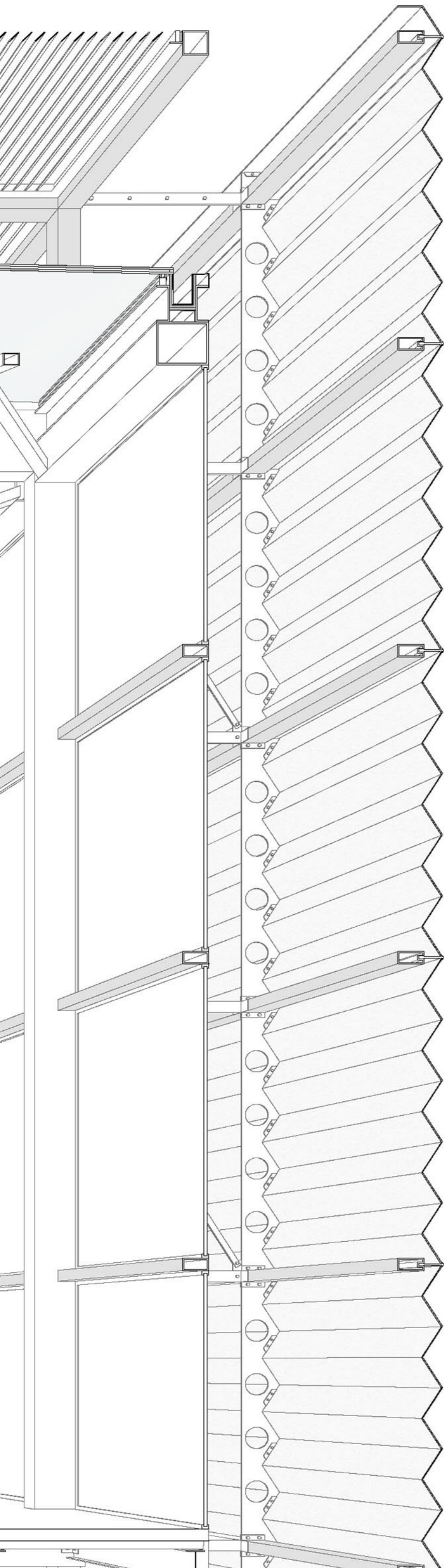


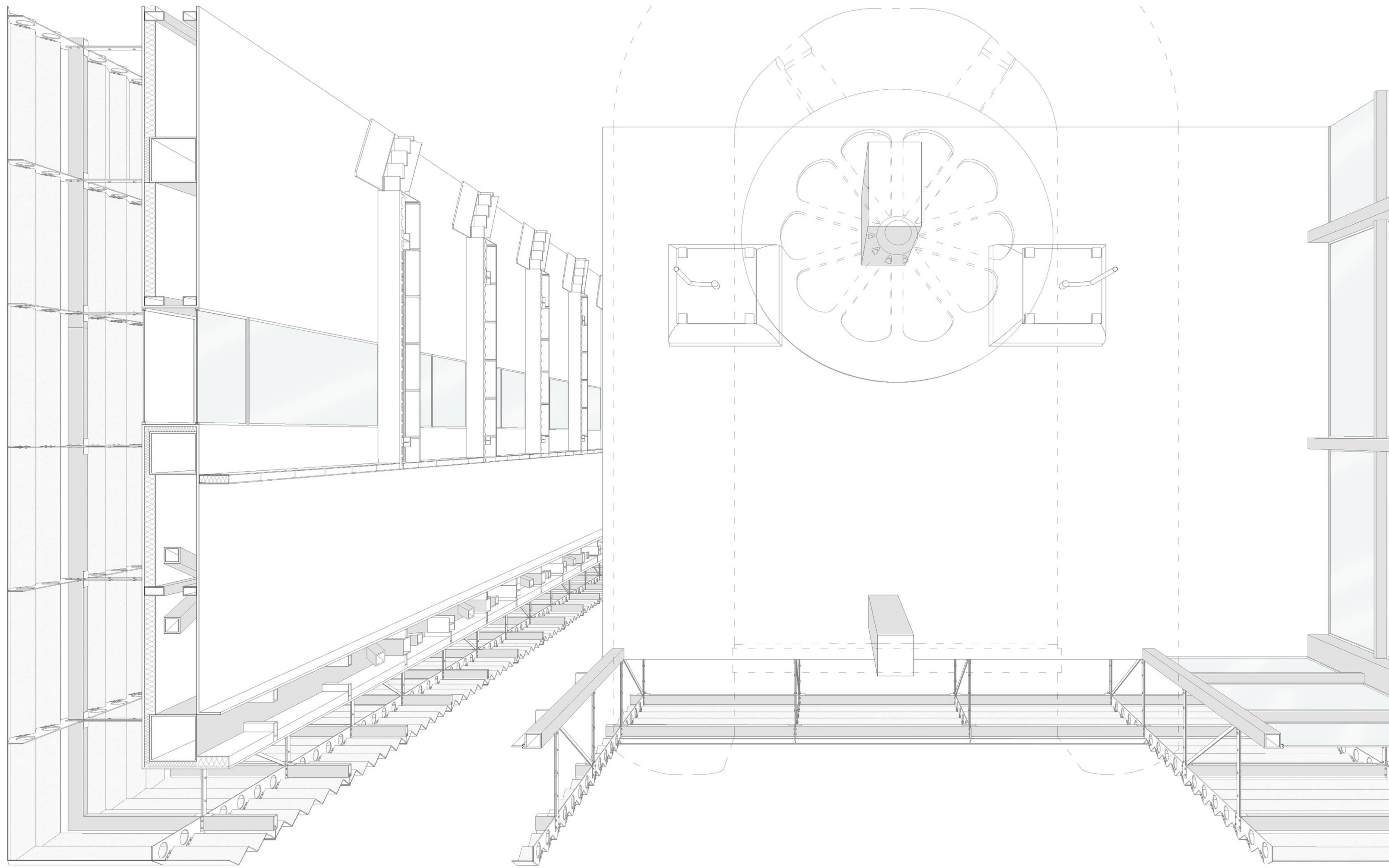
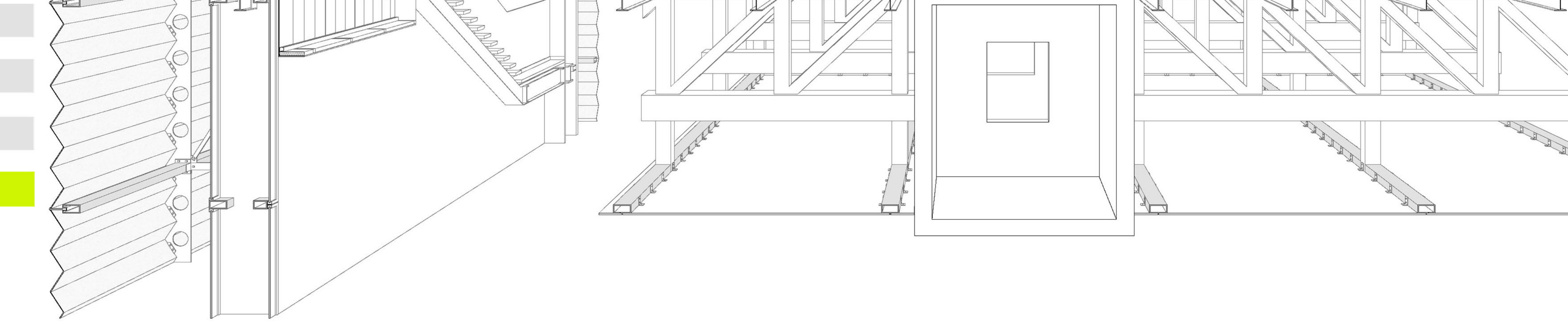
Pianta Piano Stazione

MUOVERSI IN CITTA'

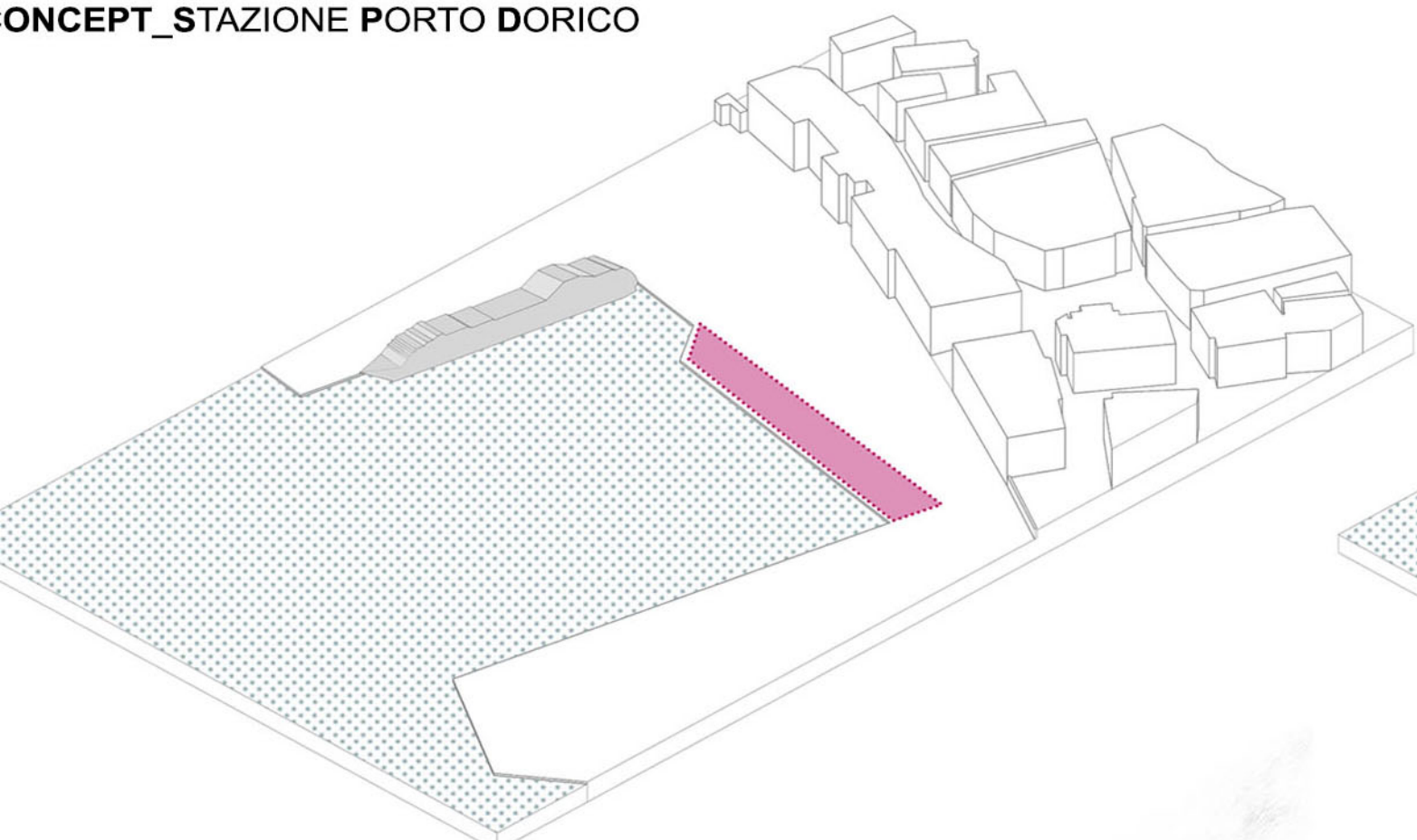


SEZIONE A-A 1:30

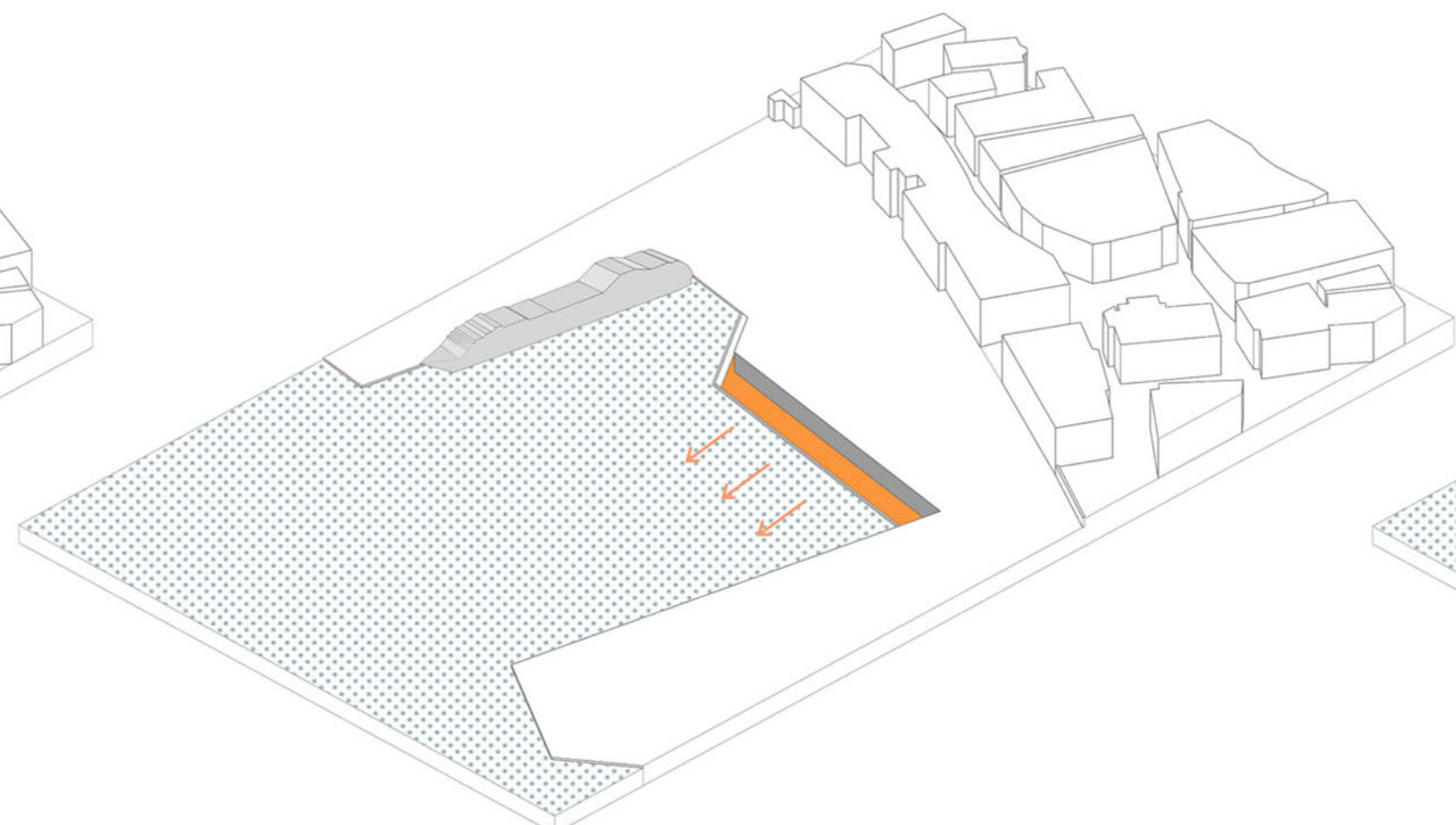




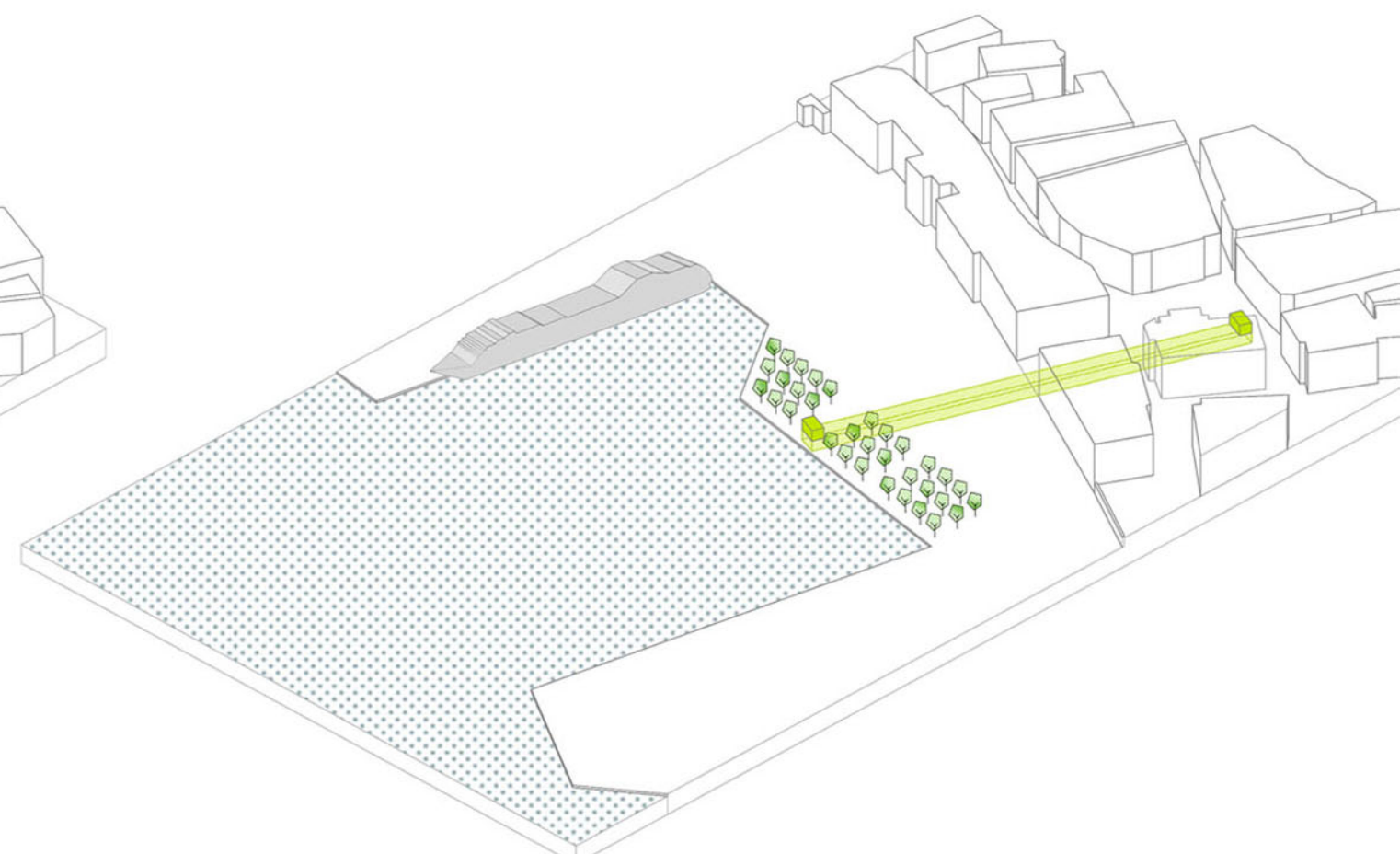
CONCEPT_STAZIONE PORTO DORICO



AREA DI PROGETTO

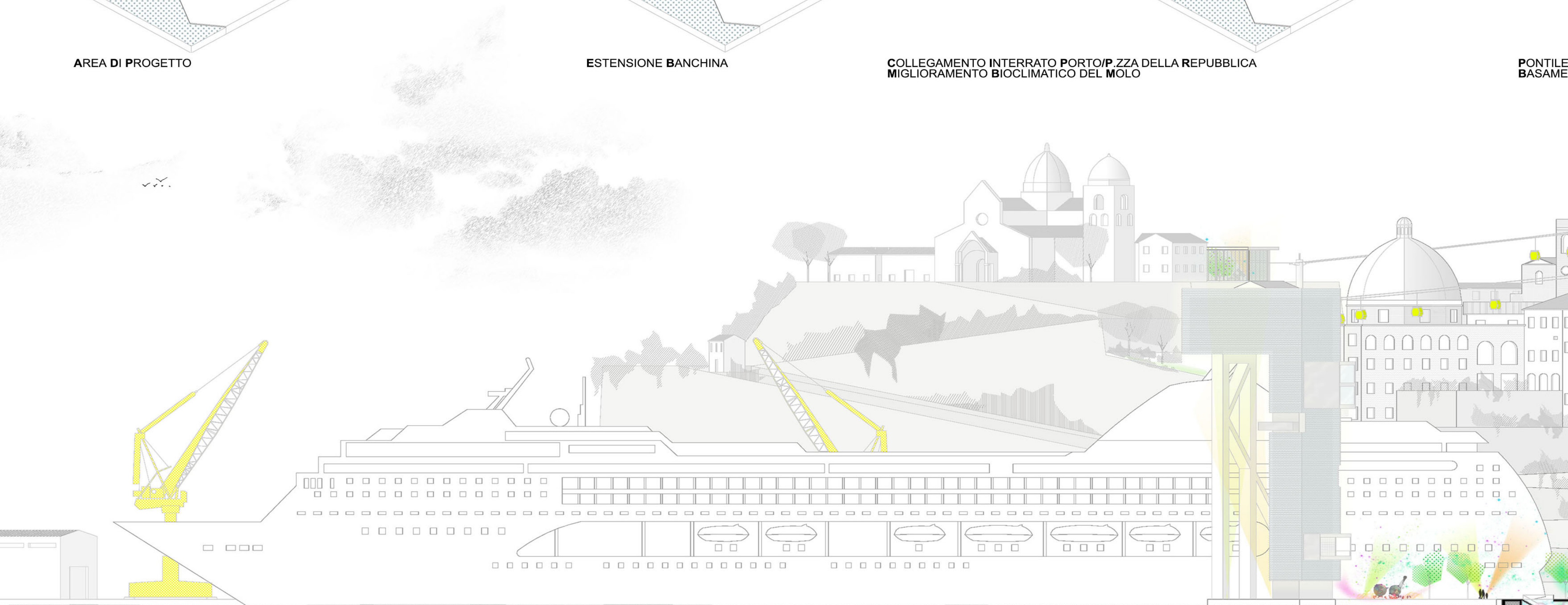


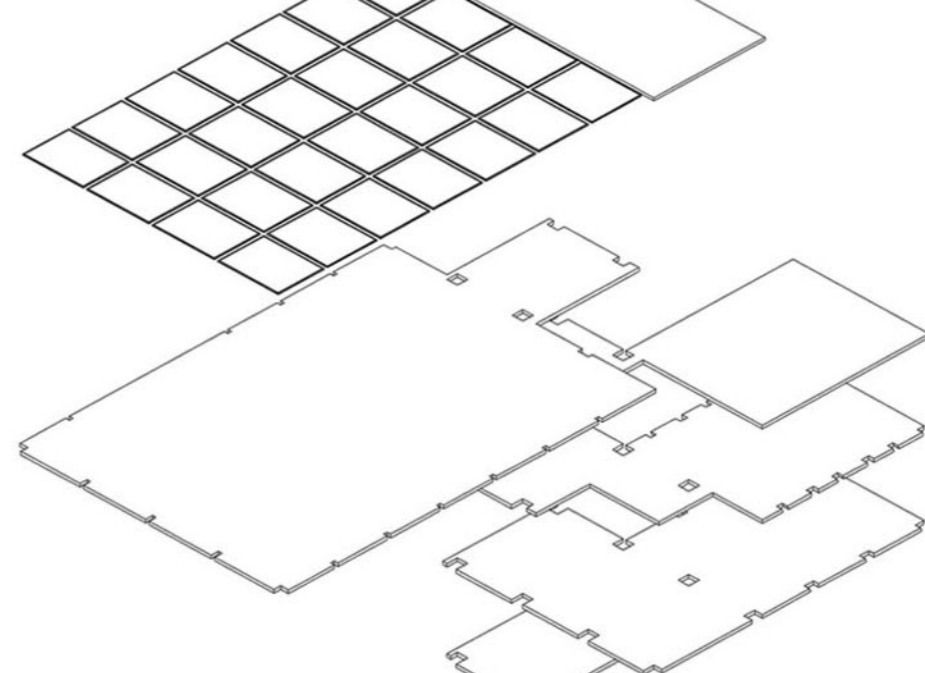
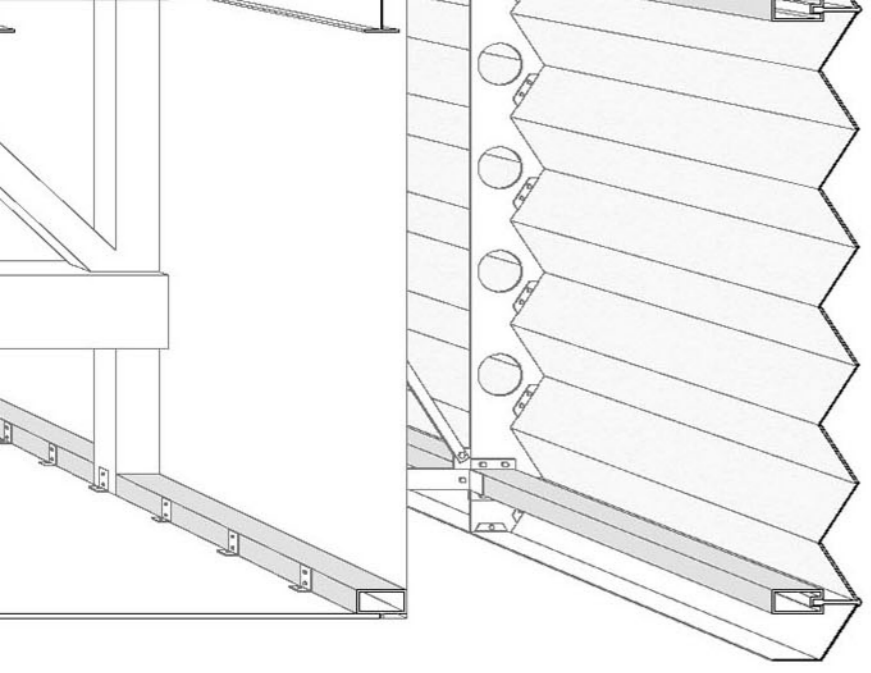
ESTENSIONE BANCHINA



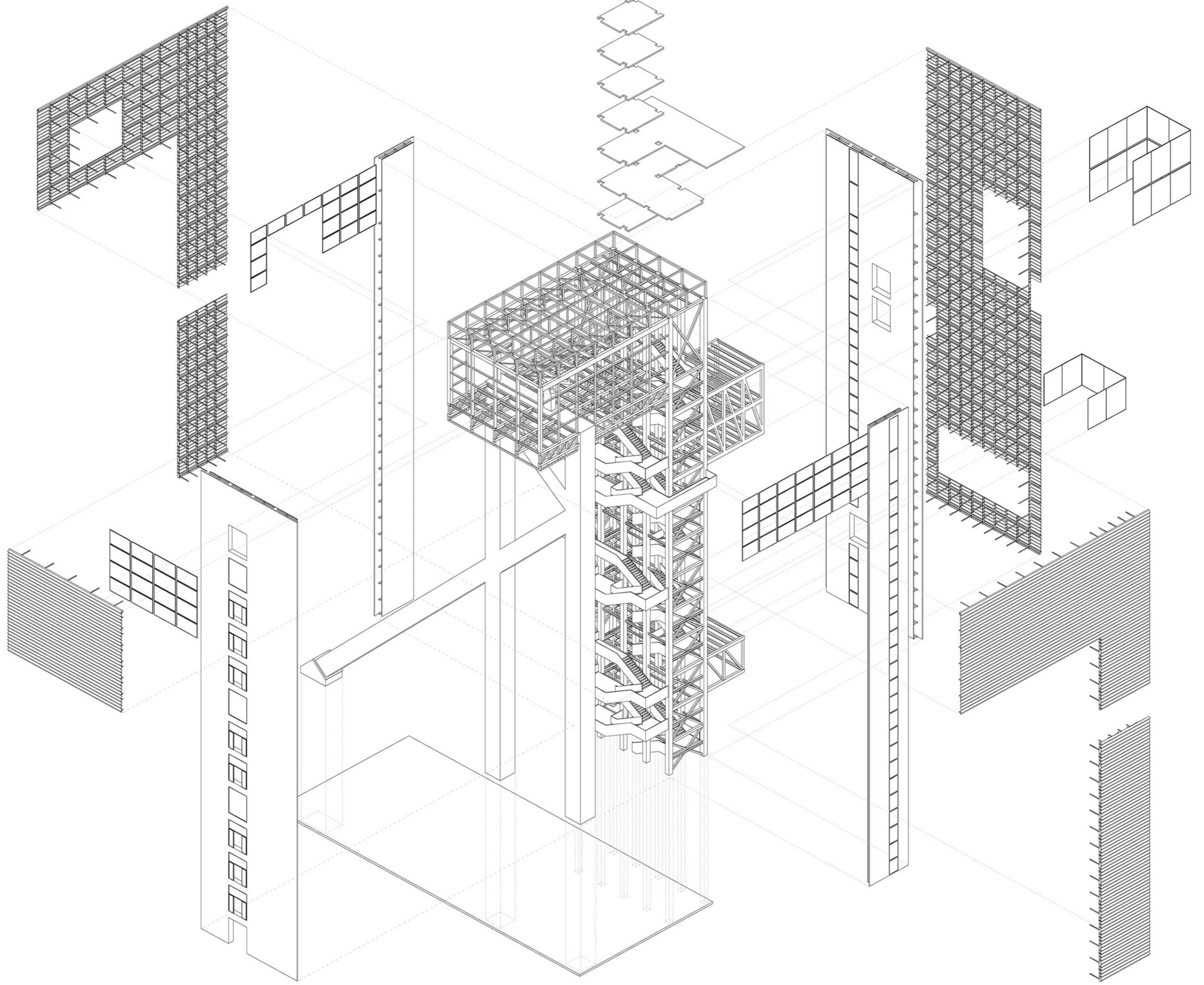
COLLEGAMENTO INTERRATO PORTO/P.ZZA DELLA REPUBBLICA
MIGLIORAMENTO BIOCLIMATICO DEL MOLO

PONTILE
BASAME

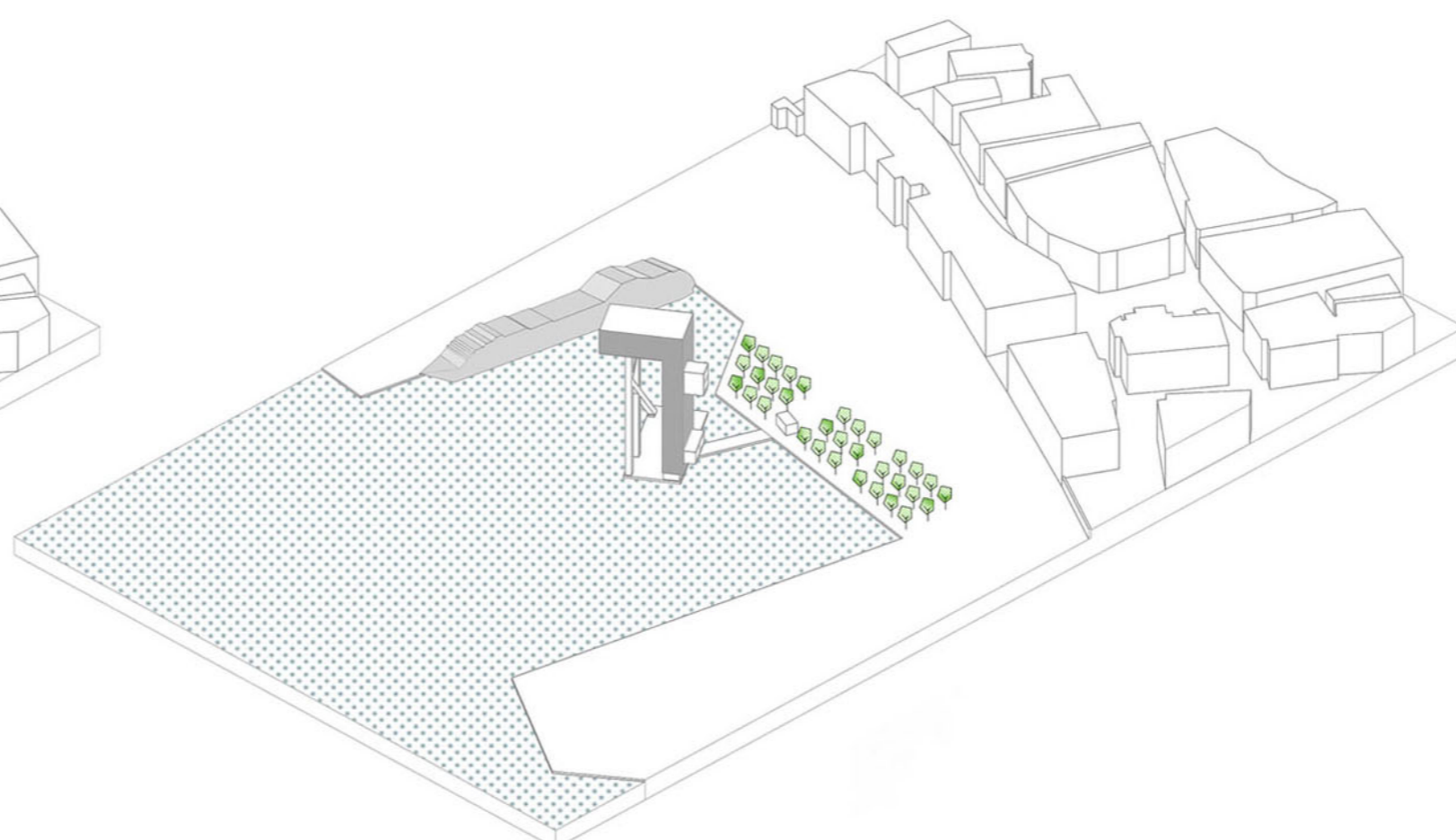
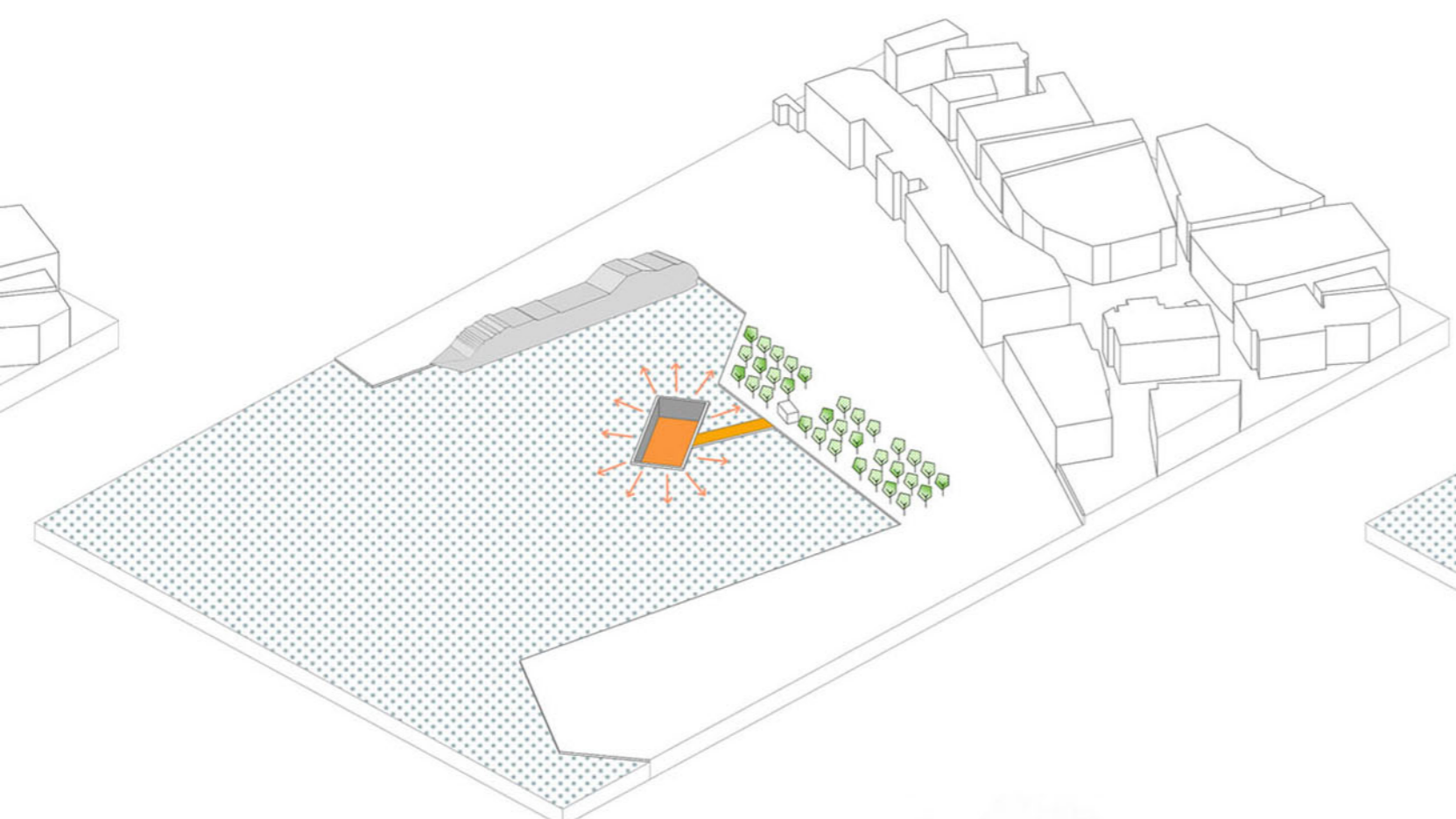




PIANTA PROSPETTICA 1:30



ESPLOSO ASSONOMETRICO



PIANTA DI COLLEGAMENTO MOLO/STAZIONE
PORTO TORRE

STAZIONE FUNIVIA PORTO DORICO

