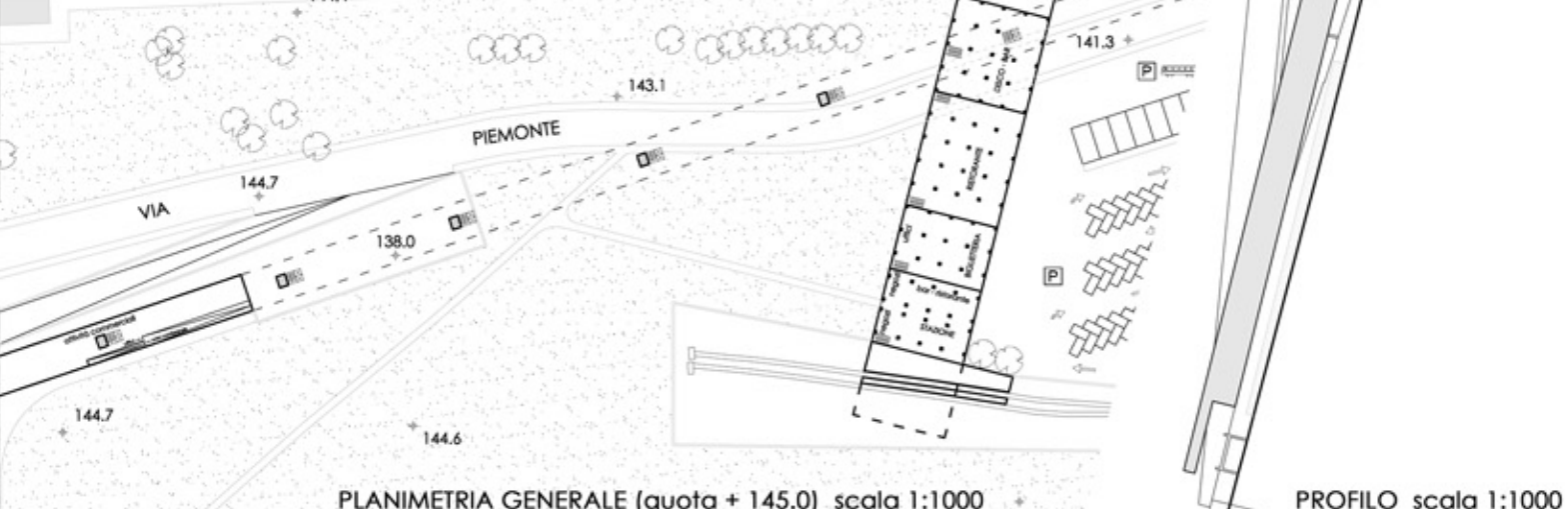
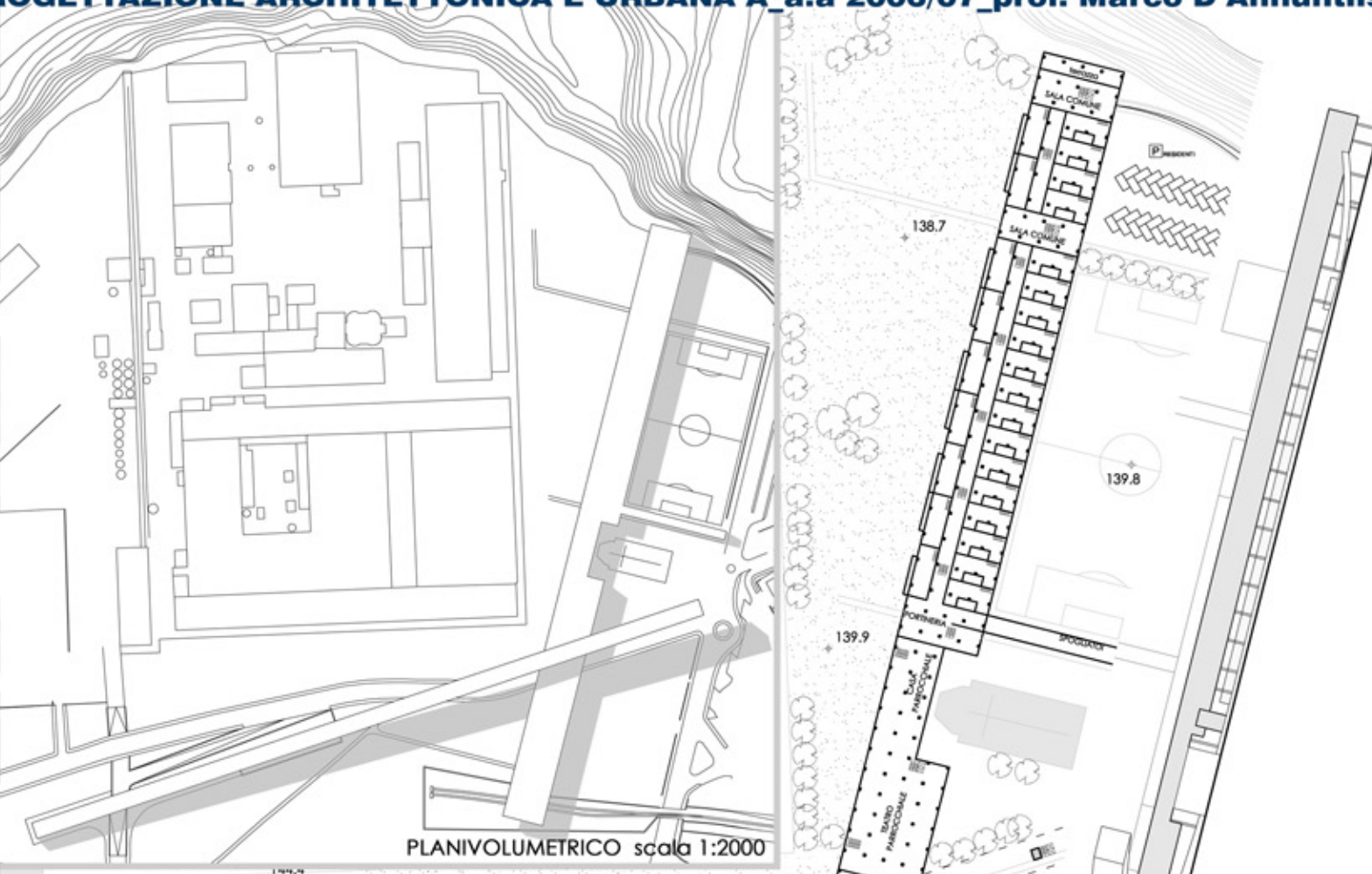
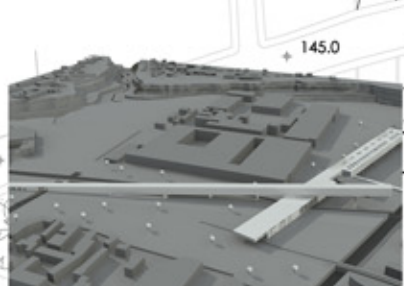
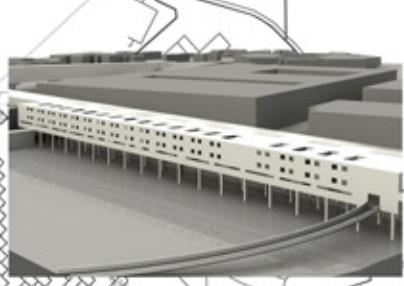
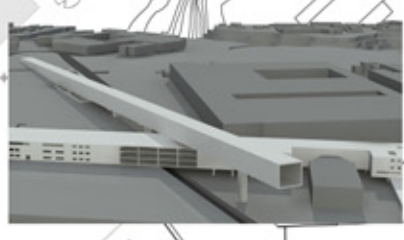
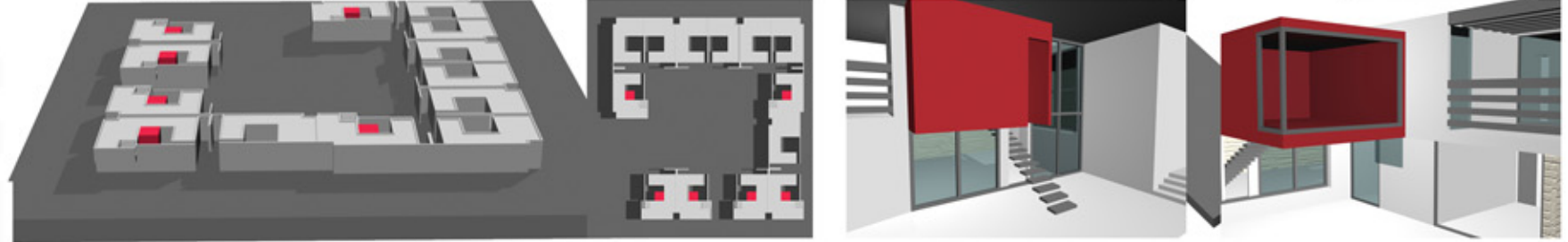
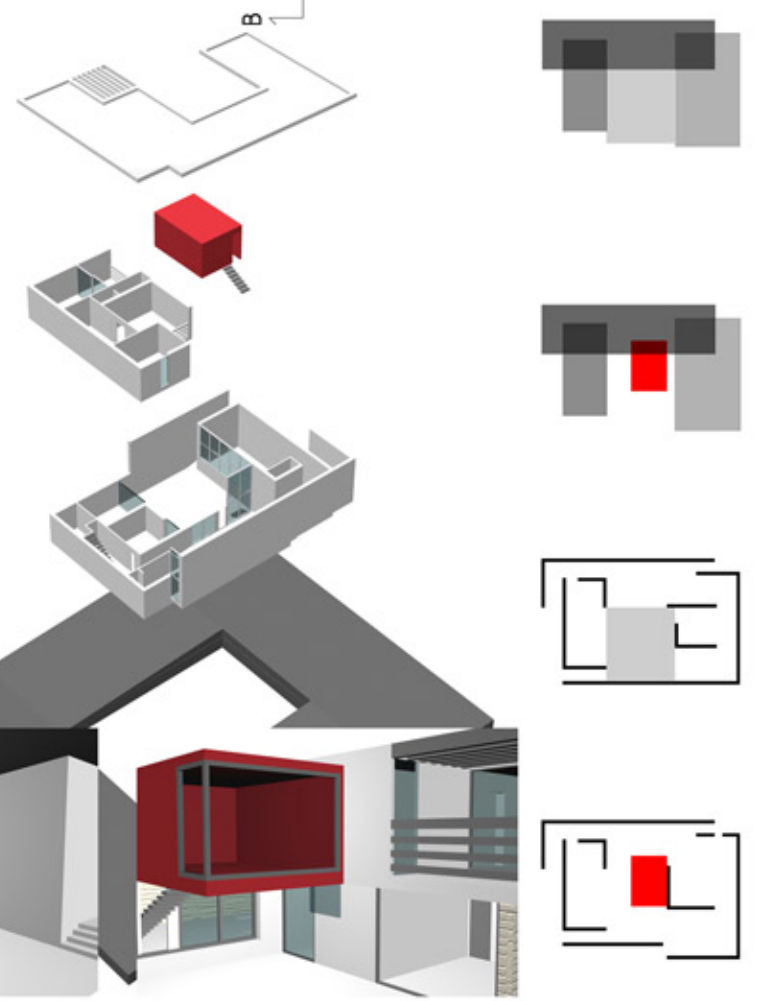
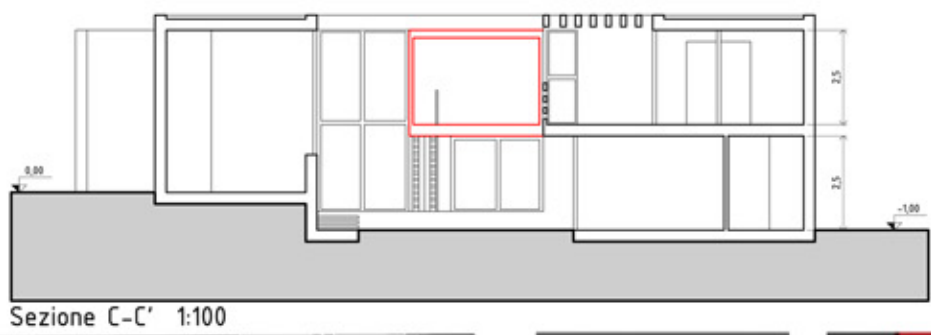
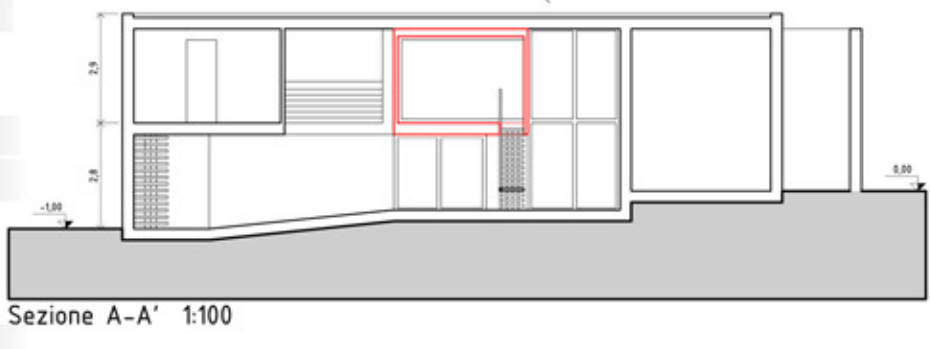
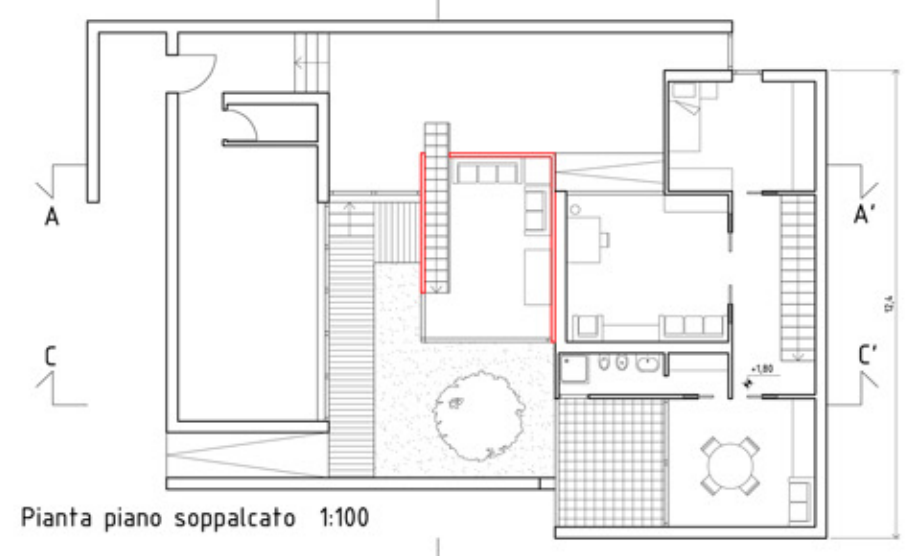


1

università degli studi di Camerino
 facoltà di architettura di ascolo piceno
TESI DI LAUREA IN SCIENZE DELL'ARCHITETTURA
 A.A. 2007/08
 sessione autunnale 09.10.2008
 relatore: Luigi Coccia
 correlatore: M. D'Annunziis
 tutori: Mofra Valeri
 Simone Ursini Casalena
laureando_GIORGIO PAOLINI



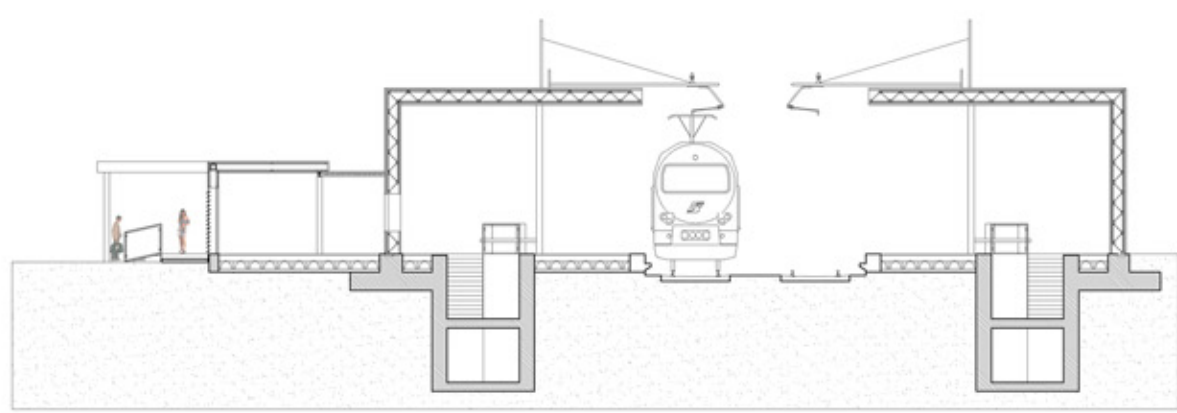
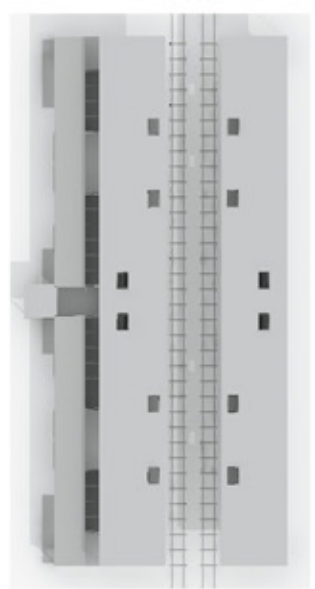
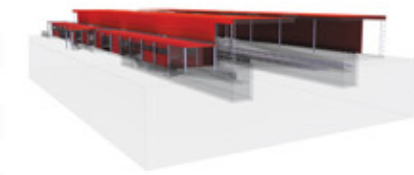
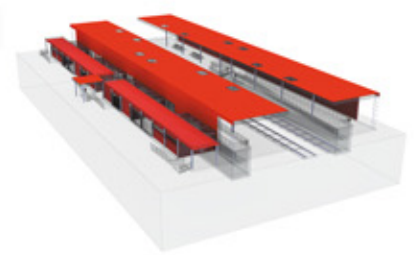
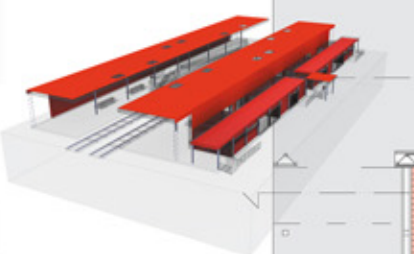
PROFILO scala 1:1000

2

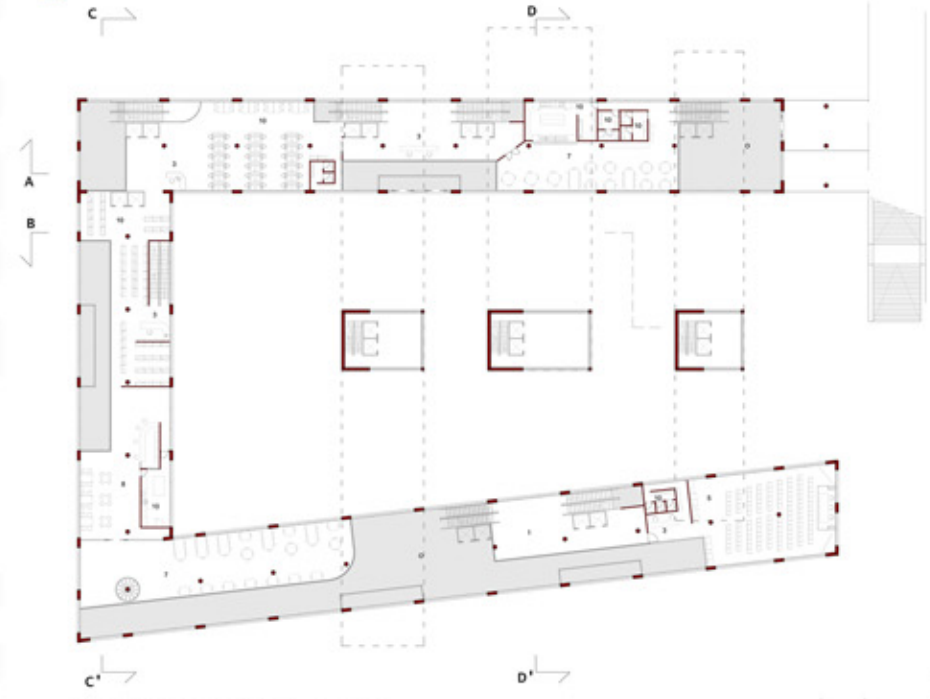
università degli studi di Camerino
facoltà di architettura di ascoli piceno
TESI DI LAUREA IN SCIENZE DELL'ARCHITETTURA
A.A. 2007/08
sessione autunnale 09.10.2008
relatore: Luigi Cocca
correlatore: M. D'annunziis
tutor: Mofra Valeri
Simone Ursini Casalena
laureando **GIORGIO PAOLINI**



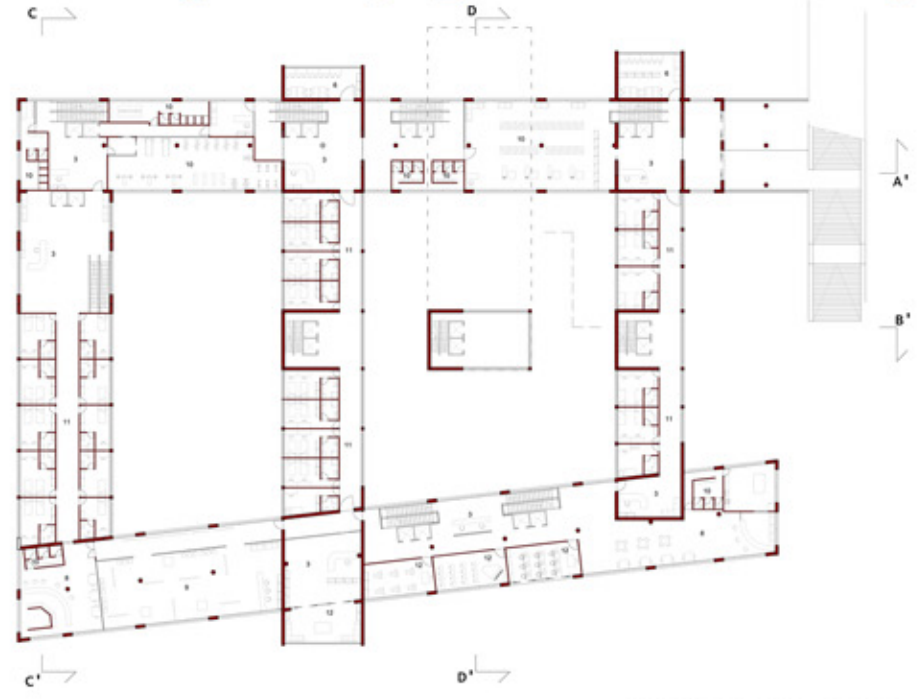
Pianta_scala 1:100



Sezione_scala 1:100



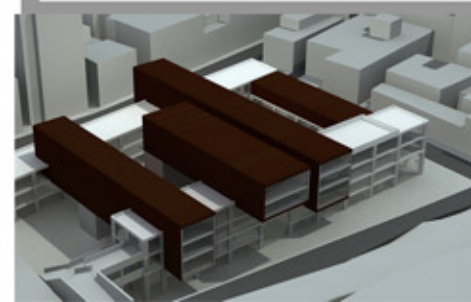
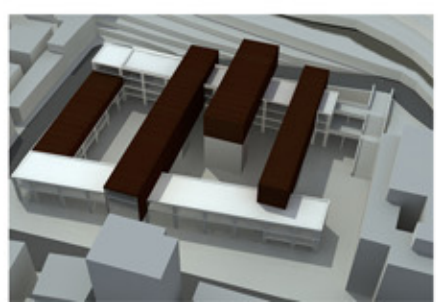
PIANTA PIANO SOPPALCATO scala 1:400



PIANTA PIANO PRIMO scala 1:400



SEZIONE R-R' scala 1:200



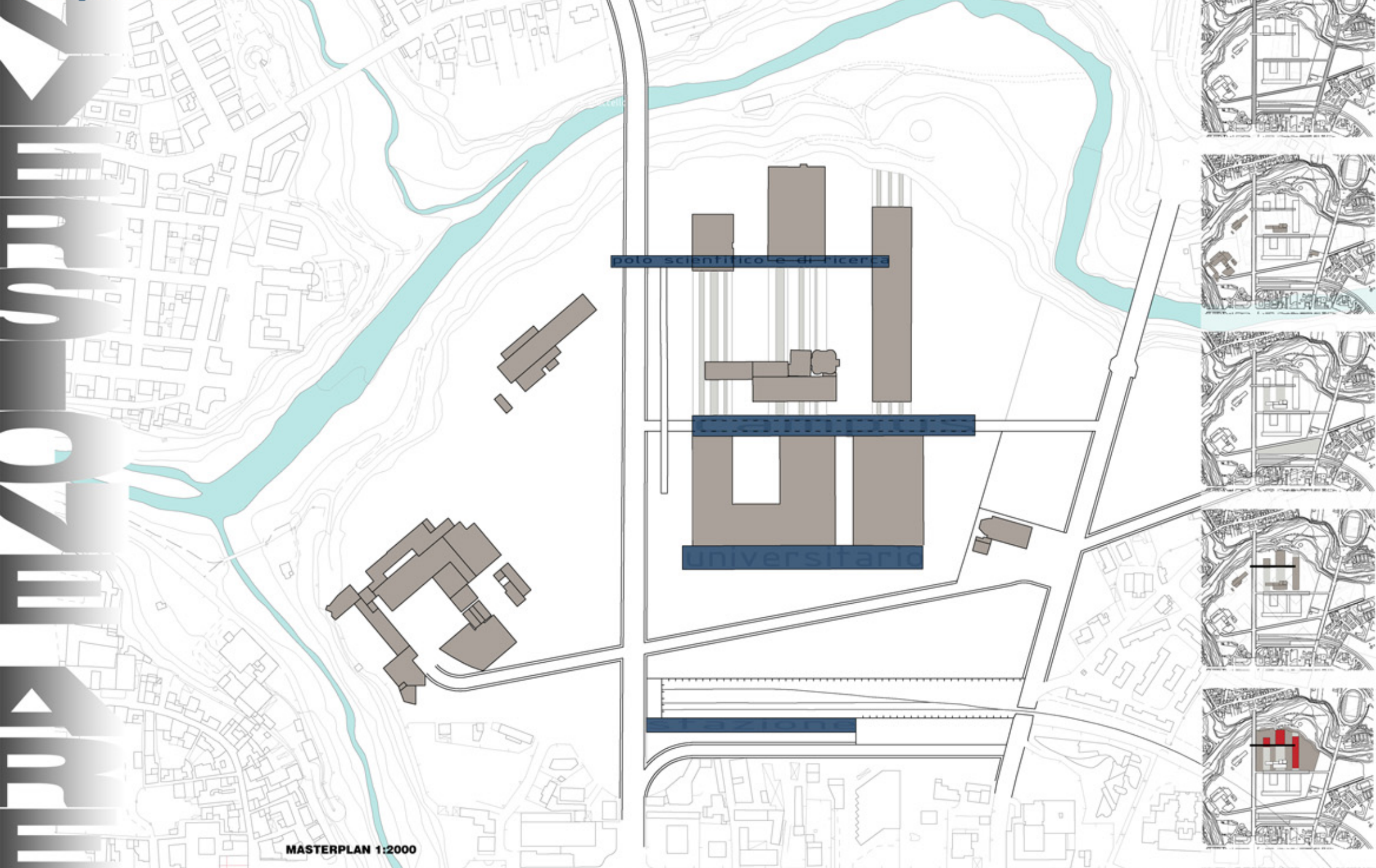
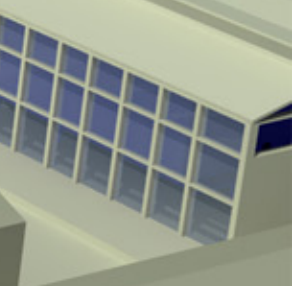
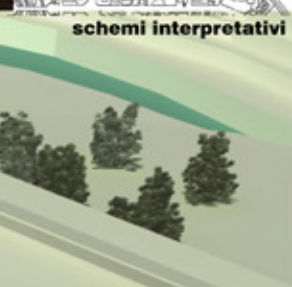


università degli studi di Camerino
facoltà di architettura di ascolo piceno

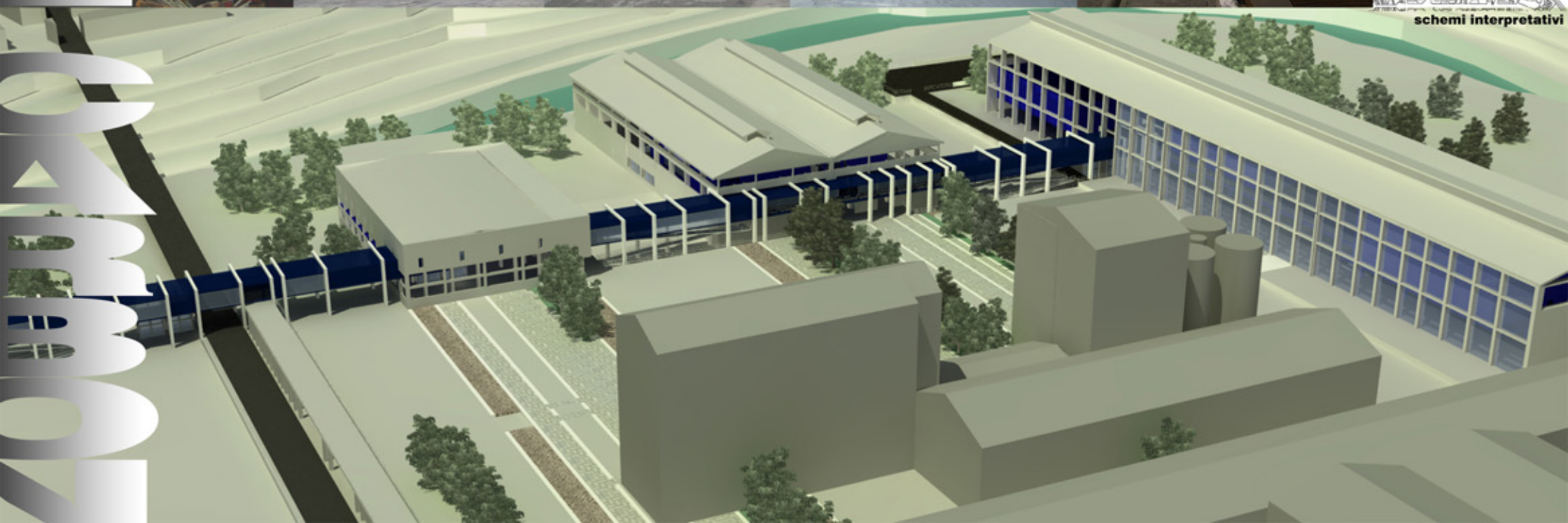
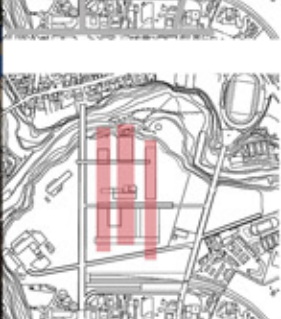
TESI DI LAUREA IN SCIENZE DELL'ARCHITETTURA
A.A. 2007/08
sessione autunnale 09.10.2008

relatore: Luigi Cocca
correlatore: M. D'Annunziata
tutori: Moira Valeri
Simone Ursini Casalena

laureando: **GIORGIO PAOLINI**



MASTERPLAN 1:2000



schemi interpretativi

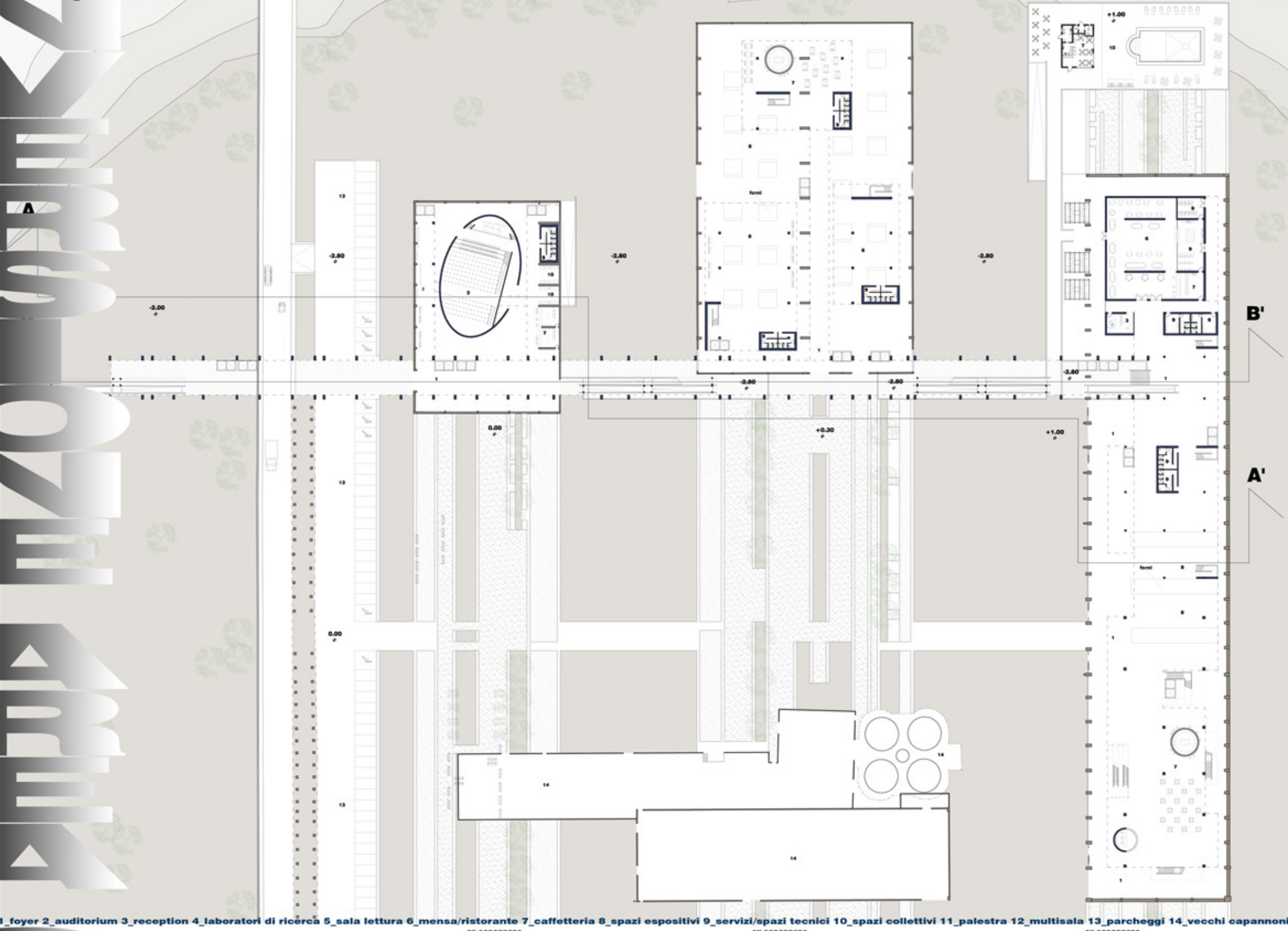
4

università degli studi di Camerino
facoltà di architettura di ascoli piceno

TESI DI LAUREA IN
SCIENZE DELL'ARCHITETTURA
A.A. 2007/08
sessione autunnale 09.10.2008

relatore: Luigi Cecola
correlatore: M. D'Annunziis
tutori: Moira Valeri
Simone Ursini Casalena

laureando: **GIORGIO PAOLINI**



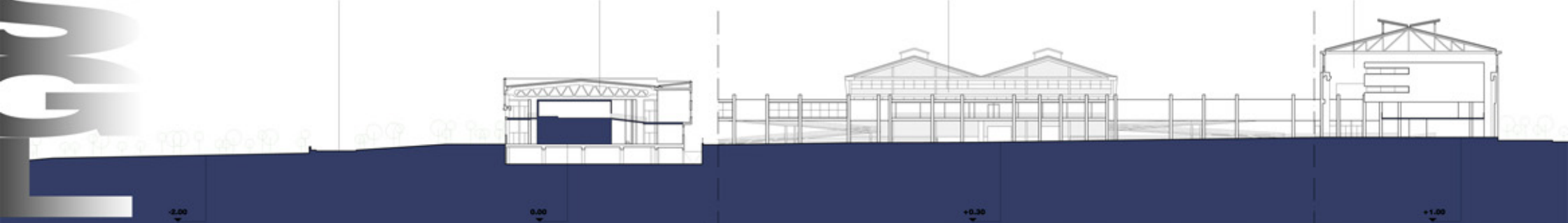
1_foyer 2_auditorium 3_reception 4_laboratori di ricerca 5_sala lettura 6_mensa/ristorante 7_caffetteria 8_spazi espositivi 9_servizi/spazi tecnici 10_spazi collettivi 11_palestra 12_multisala 13_parcheggi 14_vecchi capannoni

strada

ex capannone
uffici

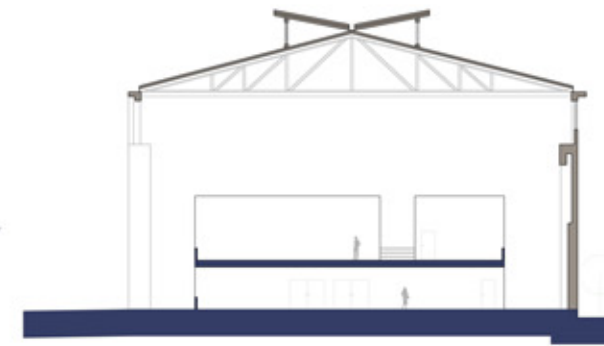
ex capannone
forni

ex capannone
forni

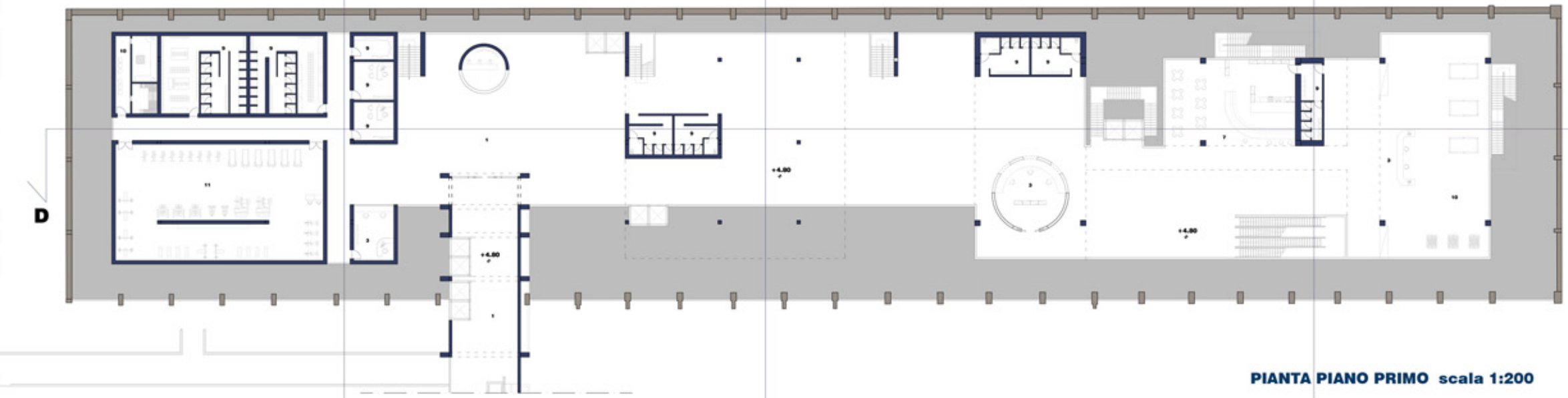




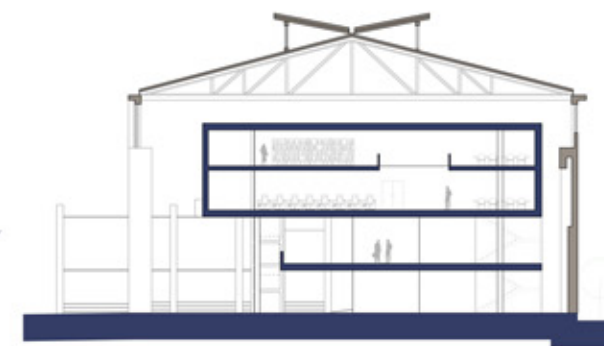
PIANTA PIANO TERRA scala 1:200



SEZIONE A-A' scala 1:200



PIANTA PIANO PRIMO scala 1:200

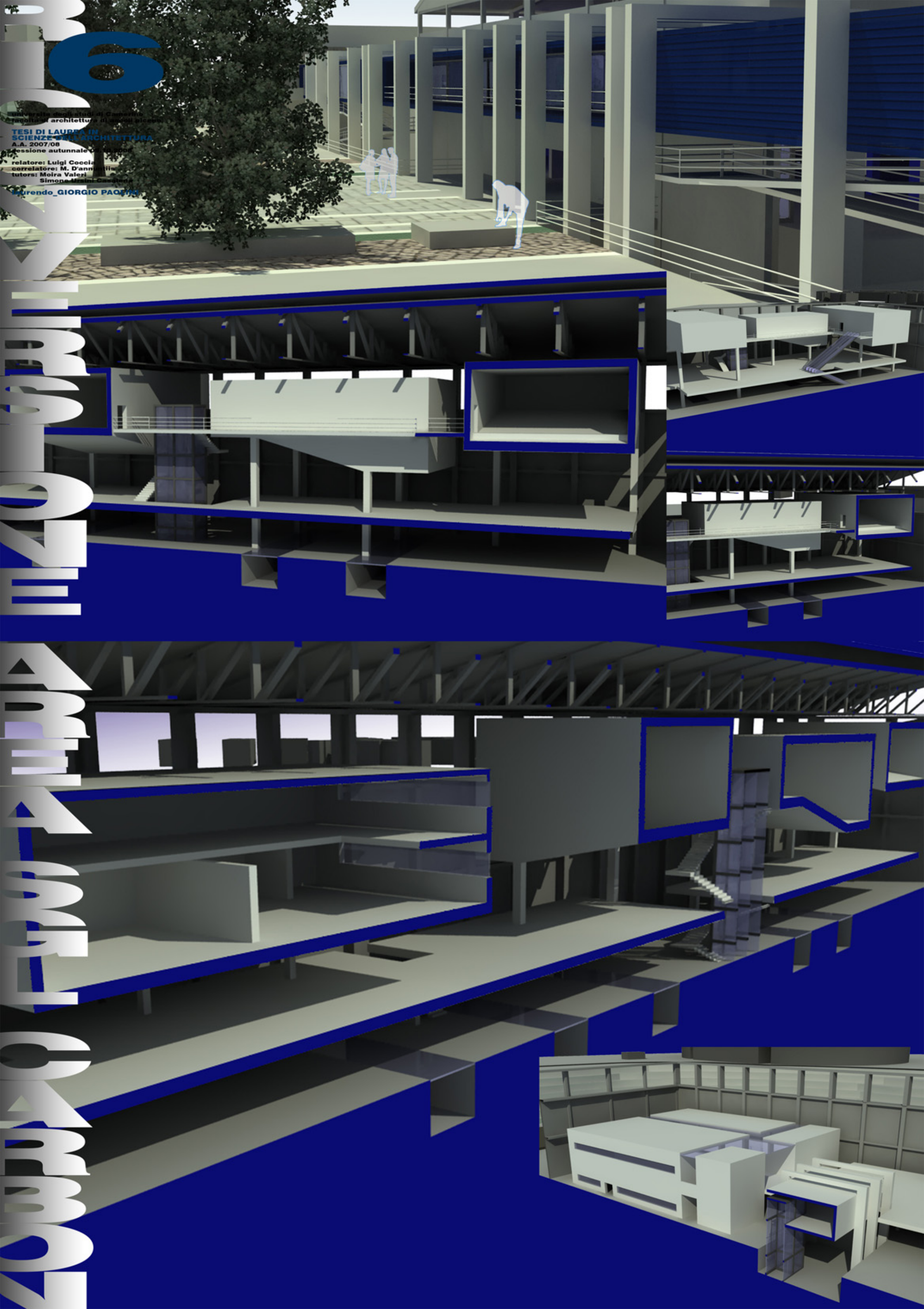


SEZIONE B-B' scala 1:200



PIANTA PIANO SECONDO scala 1:200

1_foyer 2_auditorium 3_reception 4_laboratori di ricerca 5_sala lettura 6_mensa/ristorante 7_caffetteria 8_spazi espositivi 9_servizi/spazi tecnici 10_spazi collettivi 11_palestra 12_multisala 13_parcheggi 14_vecchi capannoni



UNIVERSITÀ DEGLI STUDI DI CAGLIARI
FACOLTÀ DI ARCHITETTURA
TESI DI LAUREA IN SCIENZE DELL'ARCHITETTURA
A.A. 2007/08
Sessione autunnale
relatore: Luigi Cecchi
correlatore: M. D'Annunzio
tutori: Moira Valeri
Simone Masini
Laureando: **GIORGIO PAQUIN**

6