



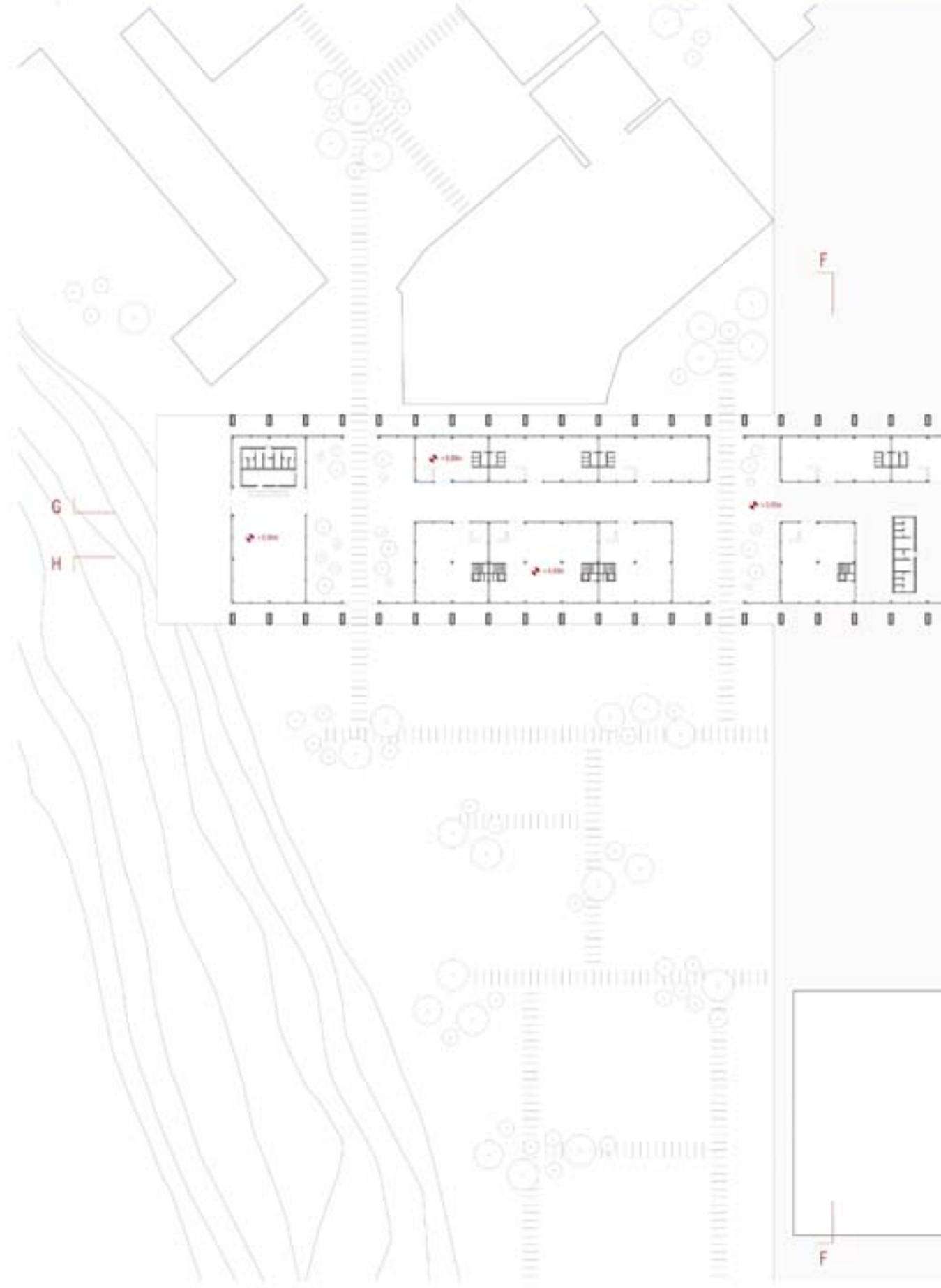
MASTERPLAN scala 1:2500

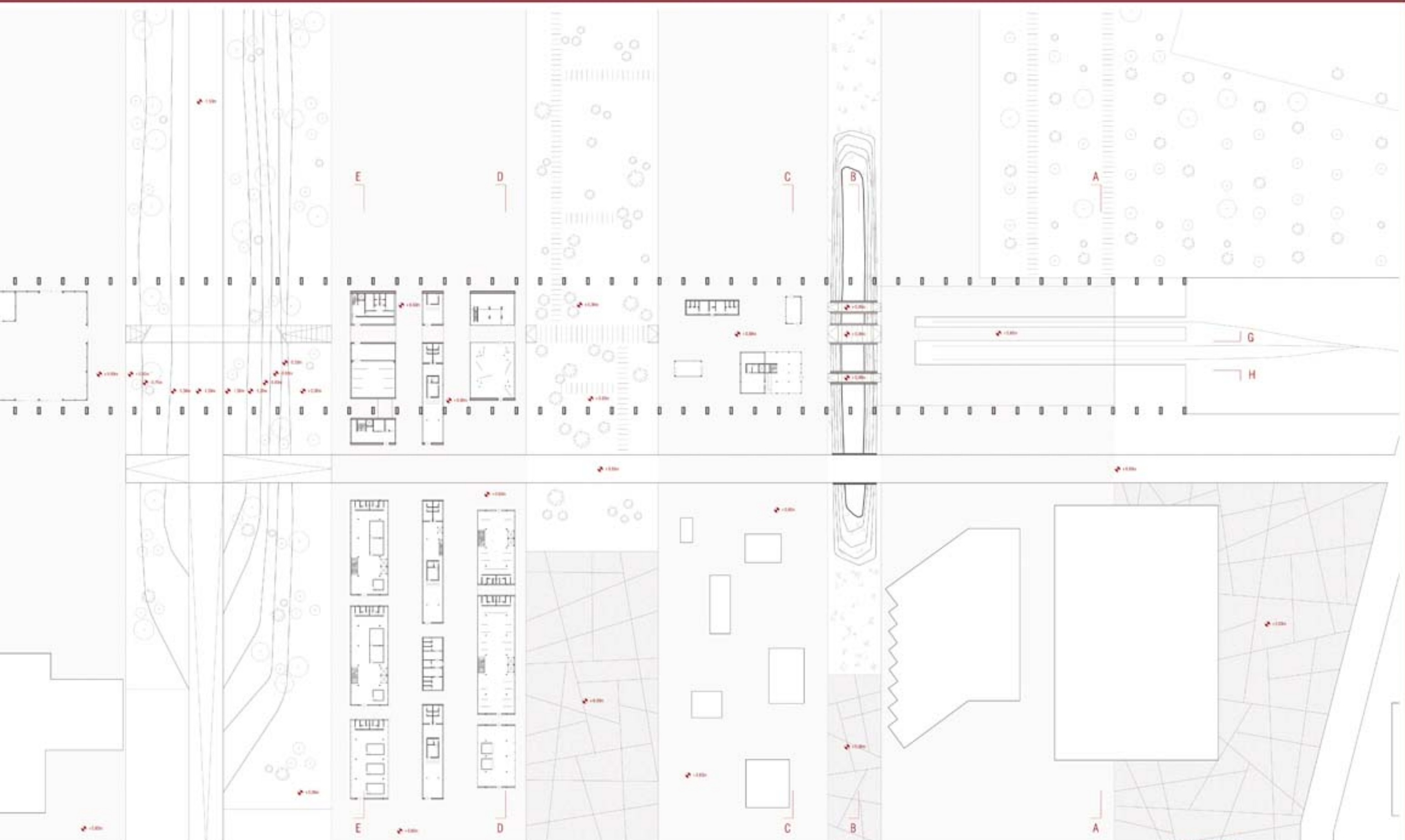


SPERIMENTAZIONE TIPOLOGIE DI TESSUTO URBANO E VERDE



SCHIZZI PROGETTUALI

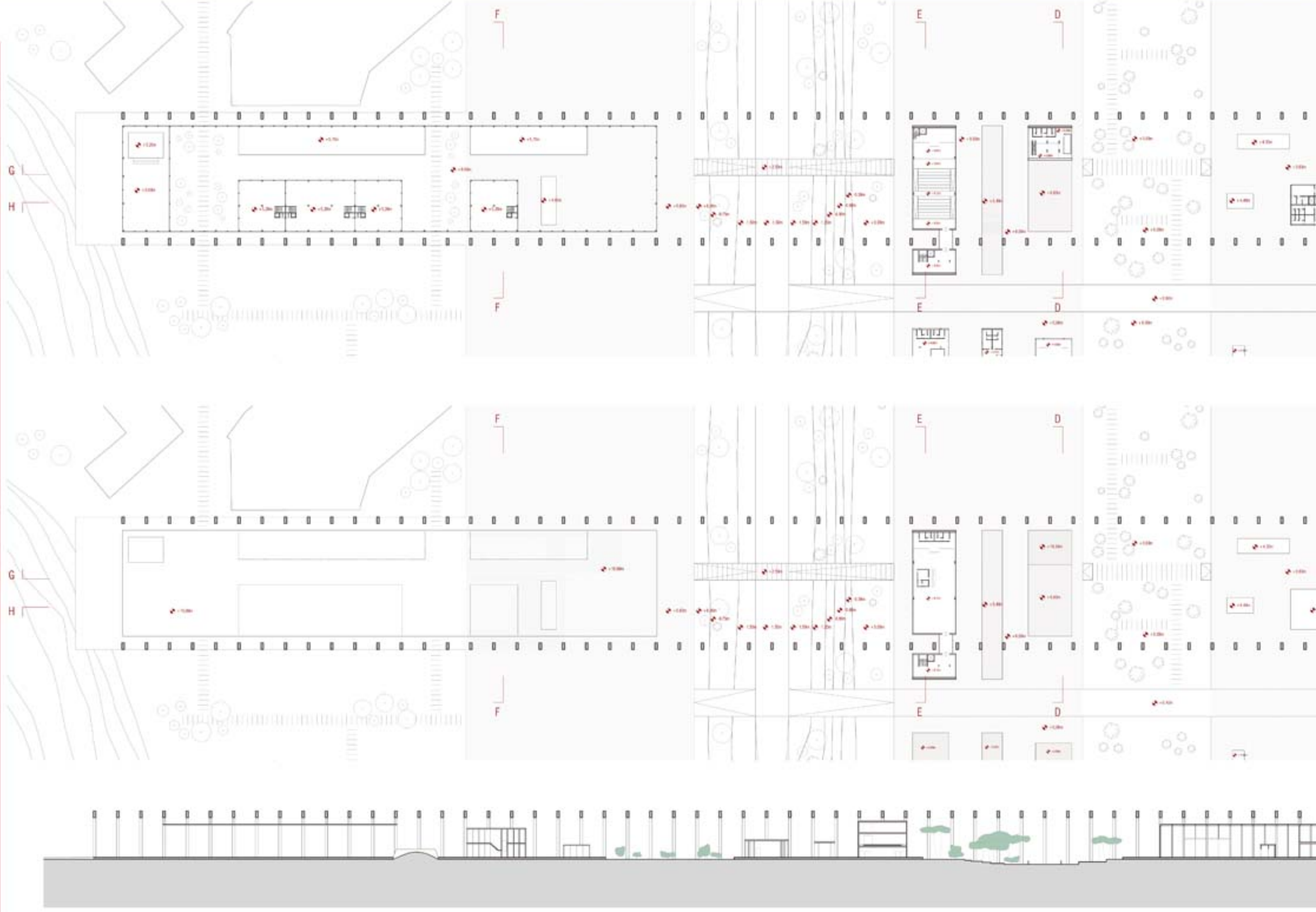


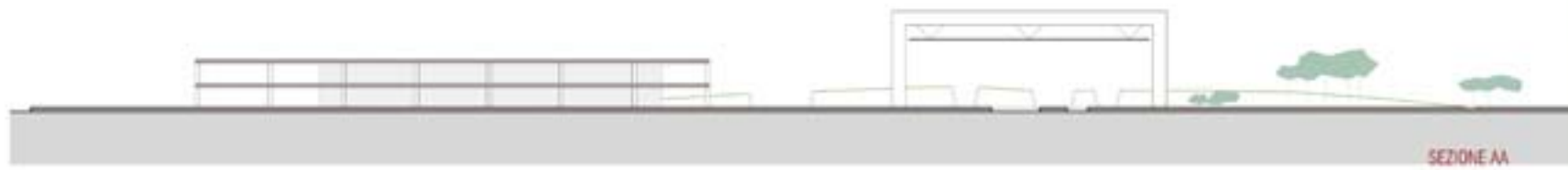
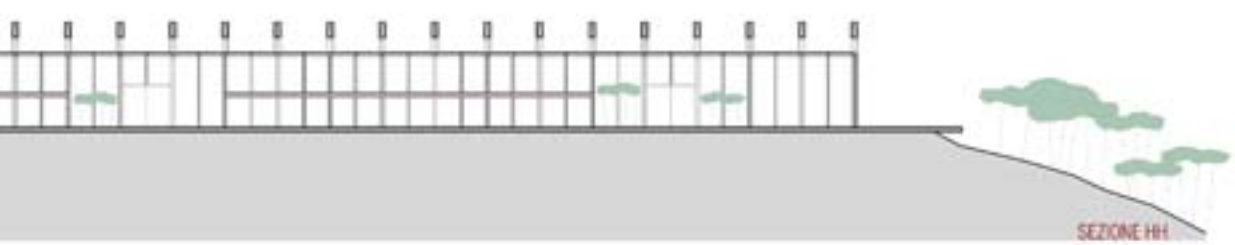
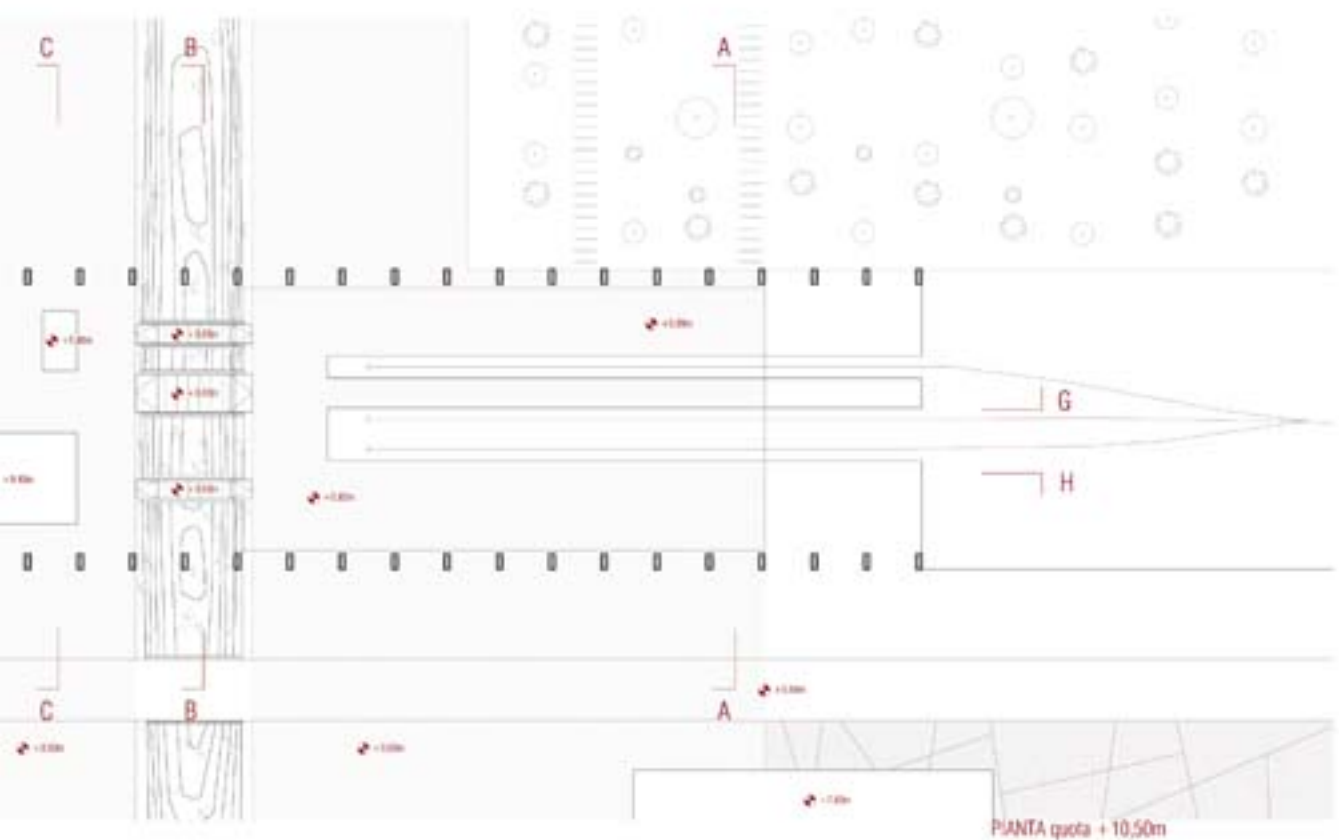
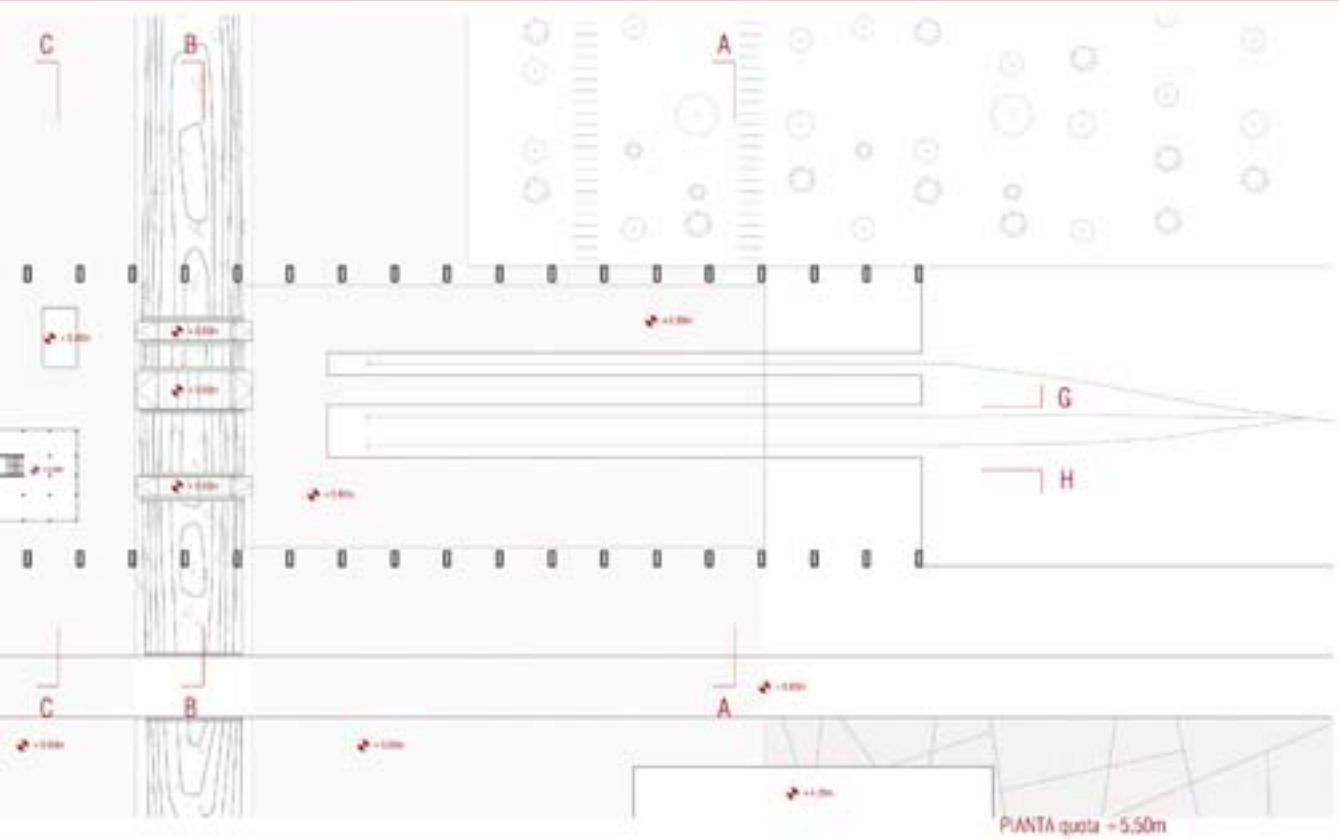


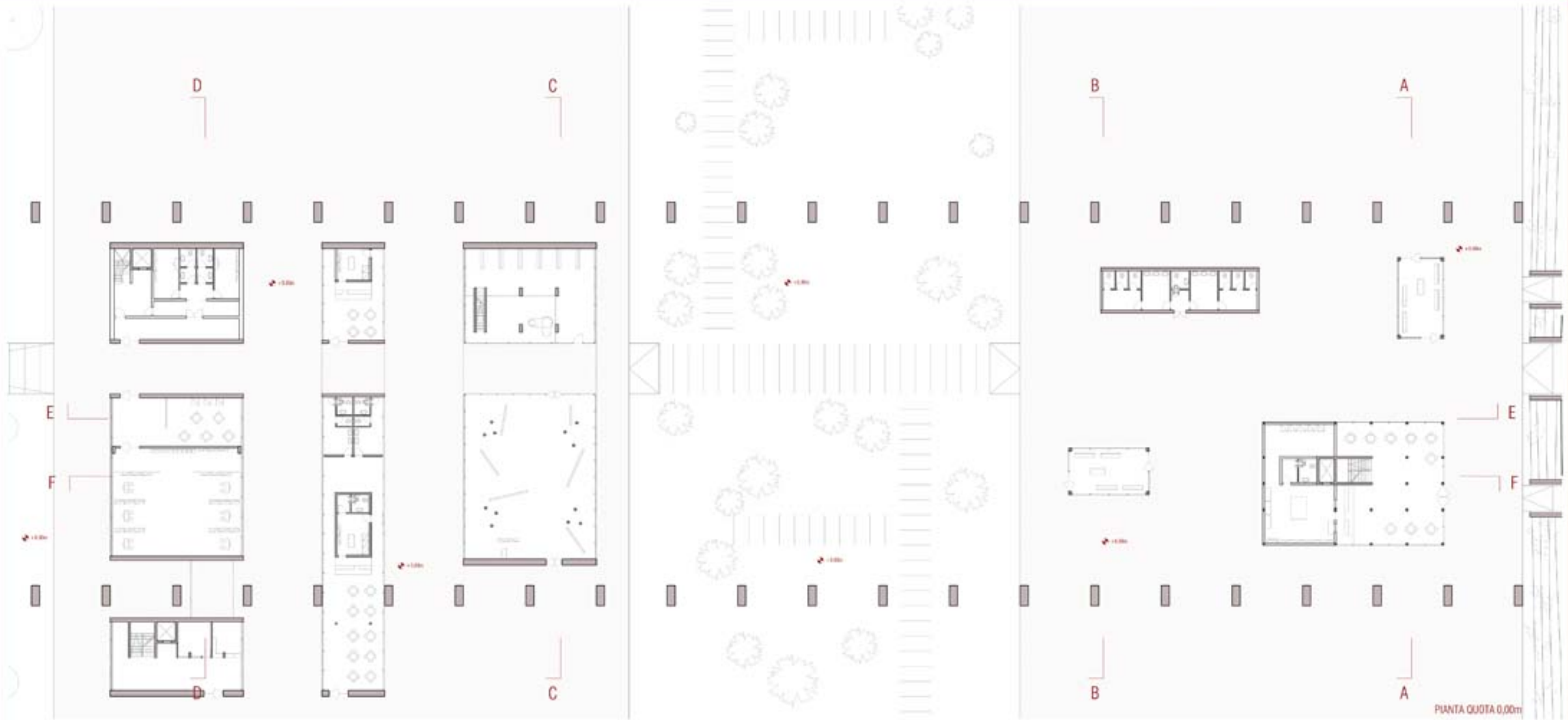
PIANTA quota 0.00m

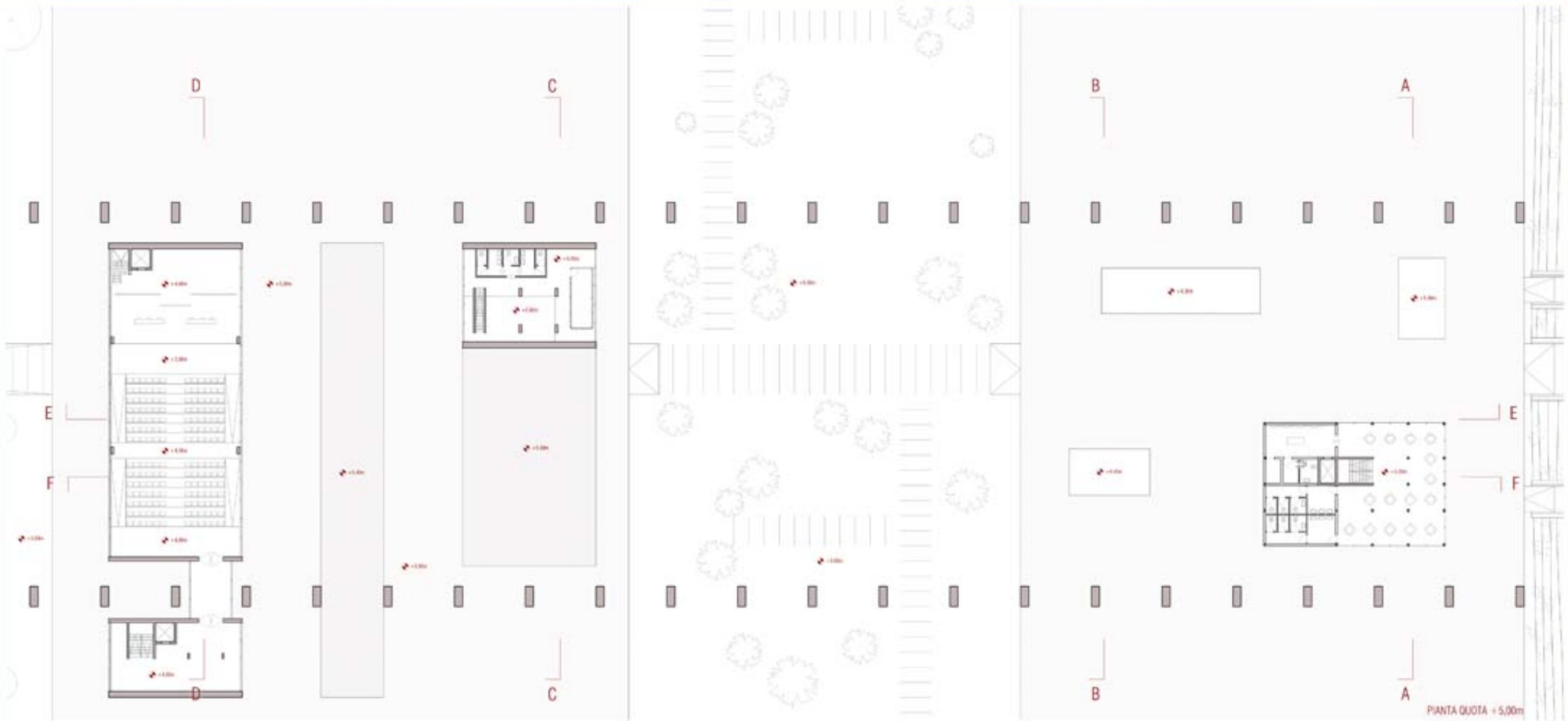


SEZIONE GG

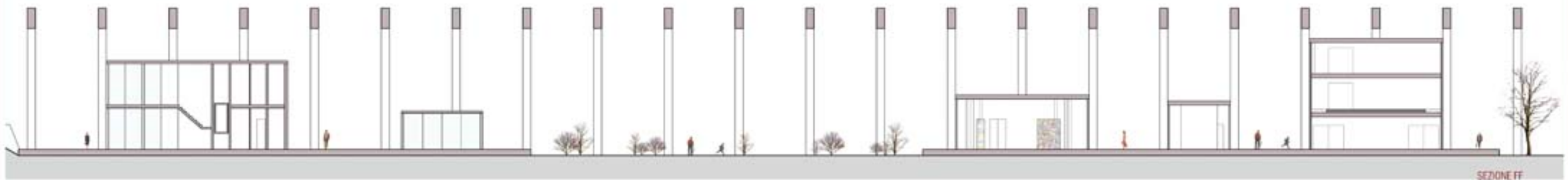








PIANTA QUOTA +5,00m



SEZIONE FF

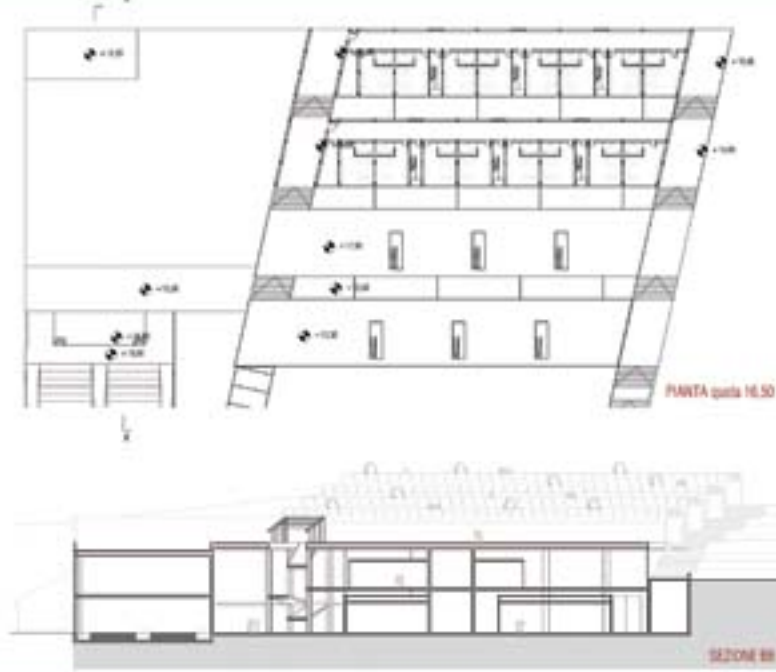
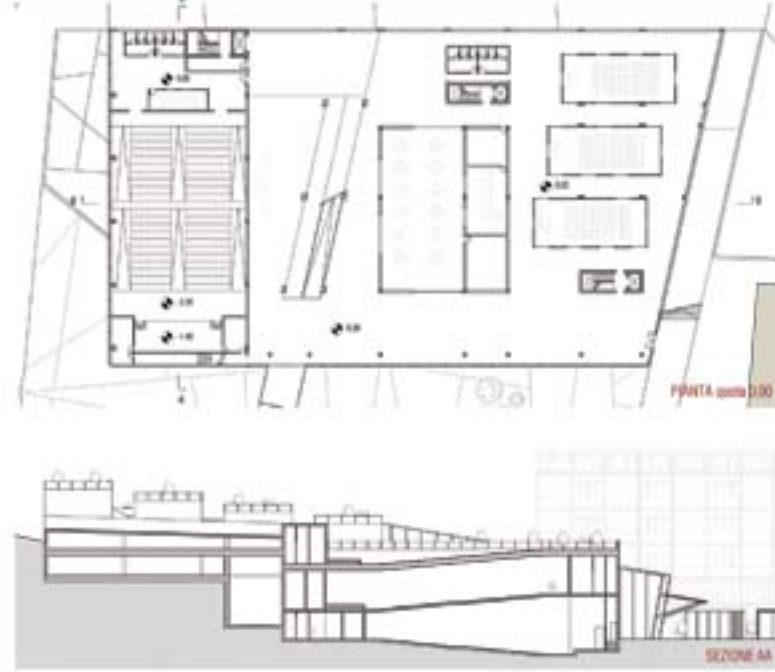


SEZIONE CC

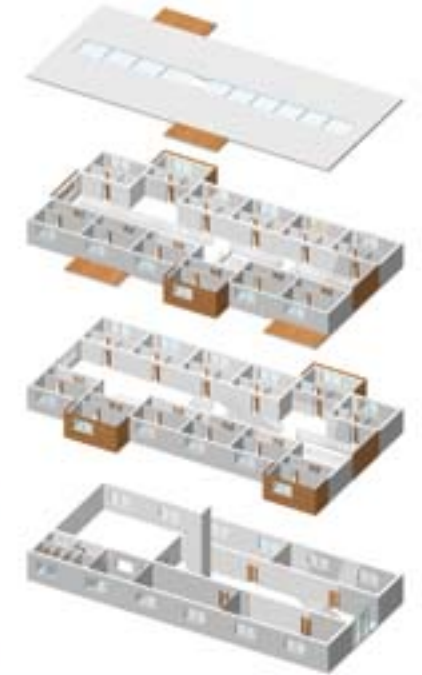
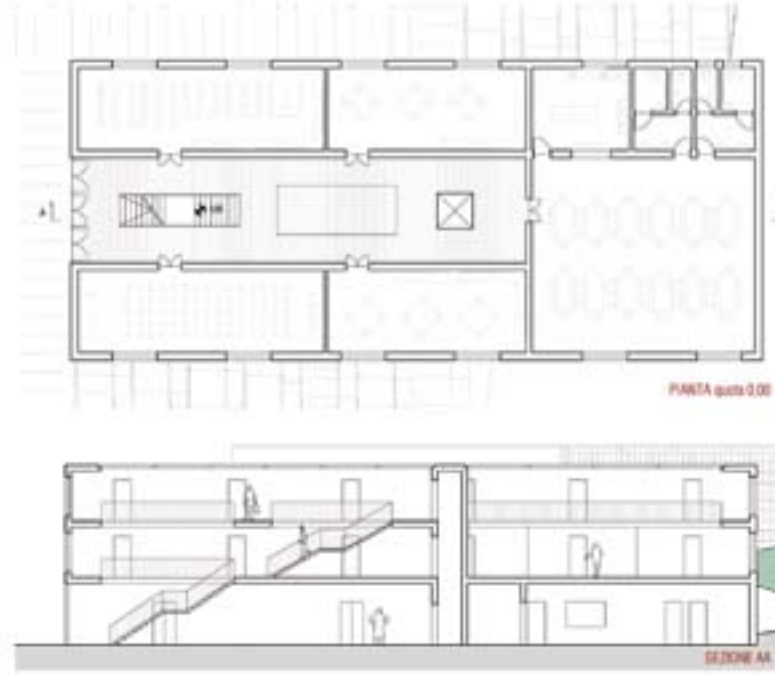


SEZIONE DD

Laboratorio di Progettazione dell'Architettura, Prof. Gabriele Mastriani  
 Progetto di recupero area tribunale, Ascoli Piceno (elaborati scala 1:500)



Laboratorio di Progettazione Urbana ed Ambientale, Prof.ssa Francesca Argenteo  
 Progetto di recupero area stazione fs, Ascoli Piceno (elaborati scala 1:200)



Laboratorio di Composizione Architettonica, Prof. Luigi Cocchia  
 Progetto di una casa a patio, Marcotia (elaborati scala 1:200)

