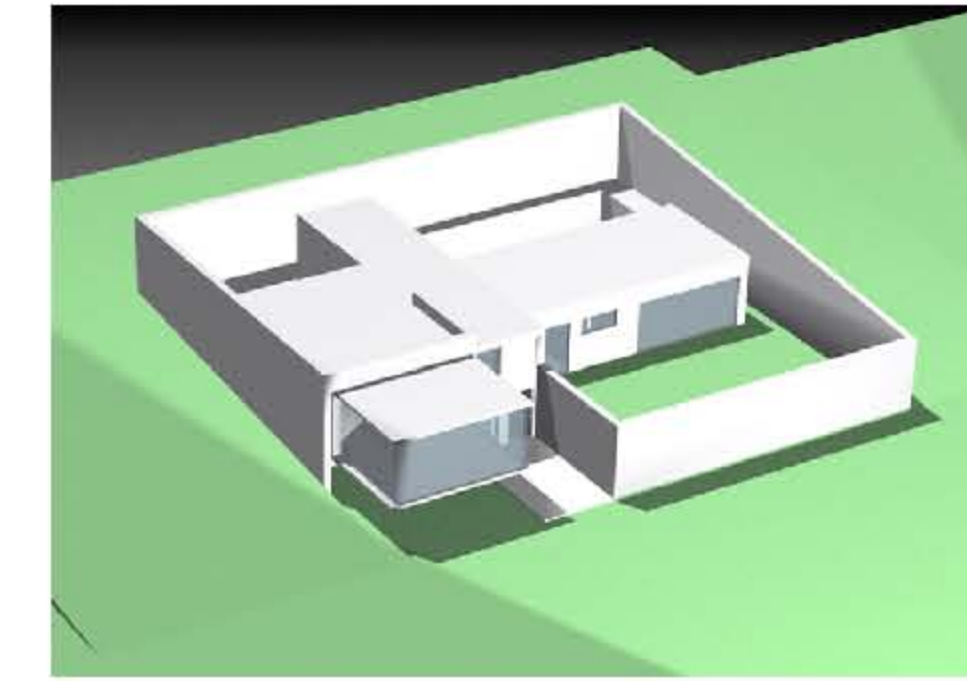
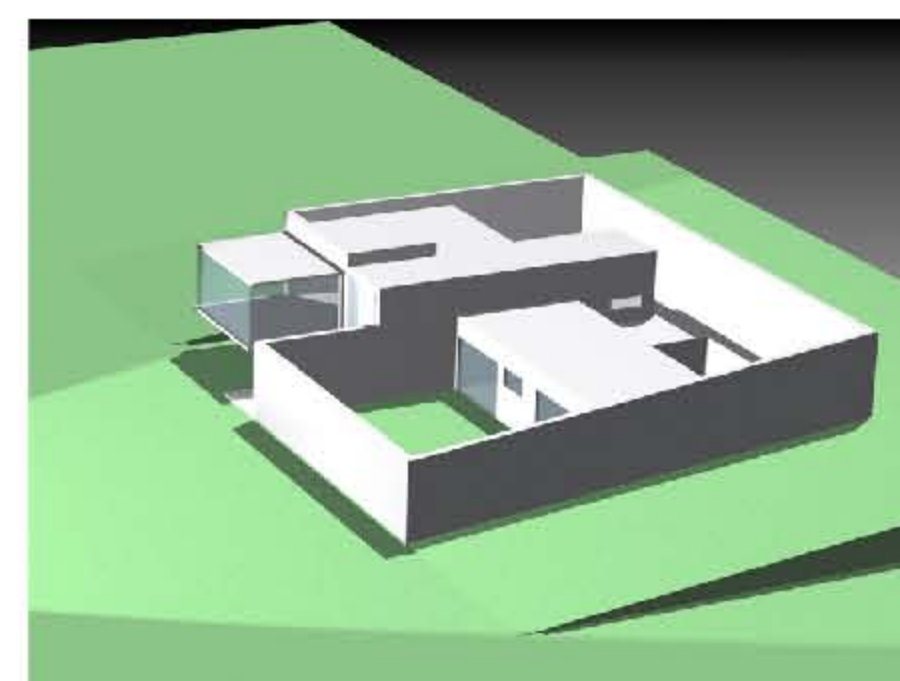
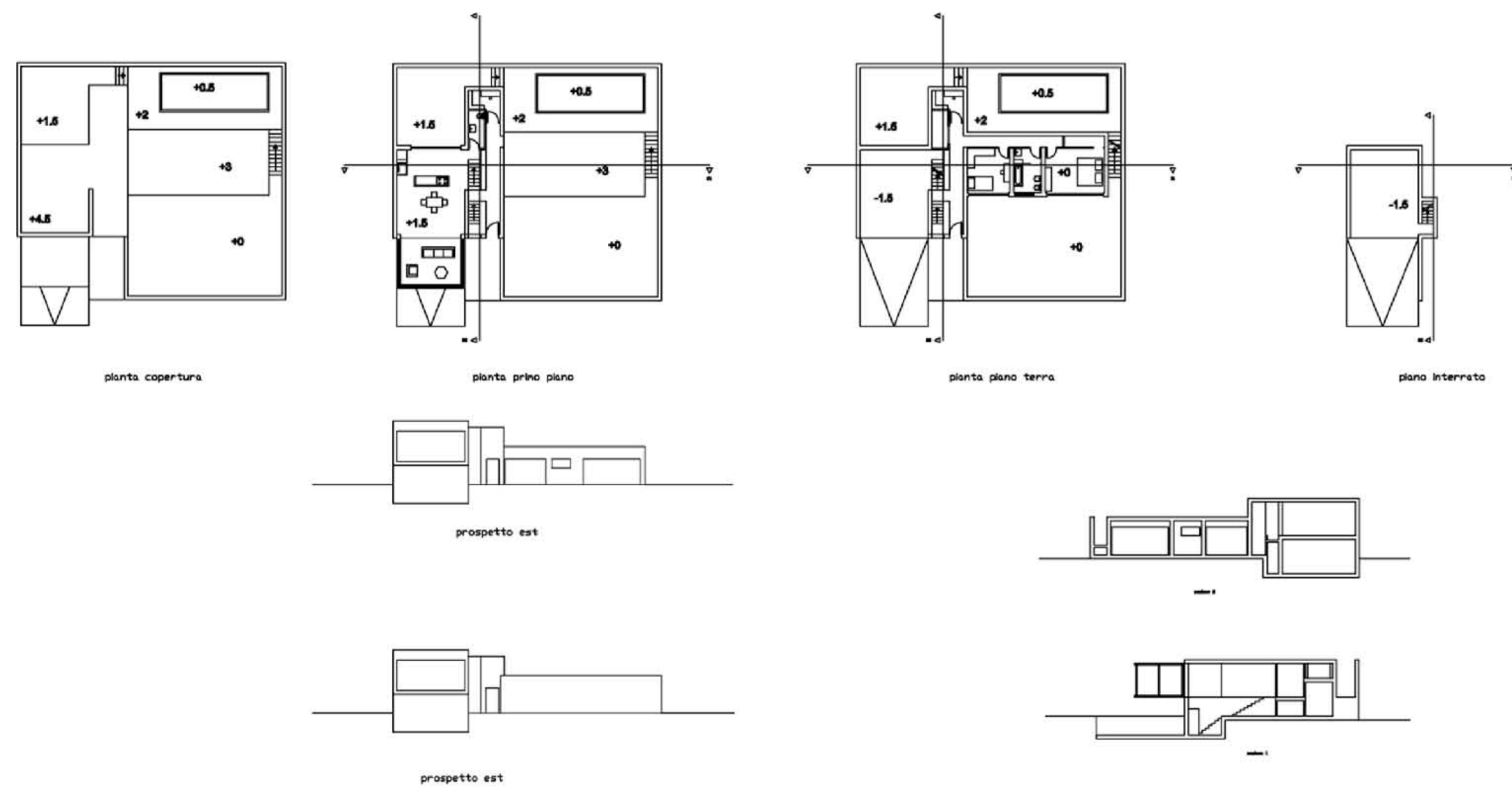
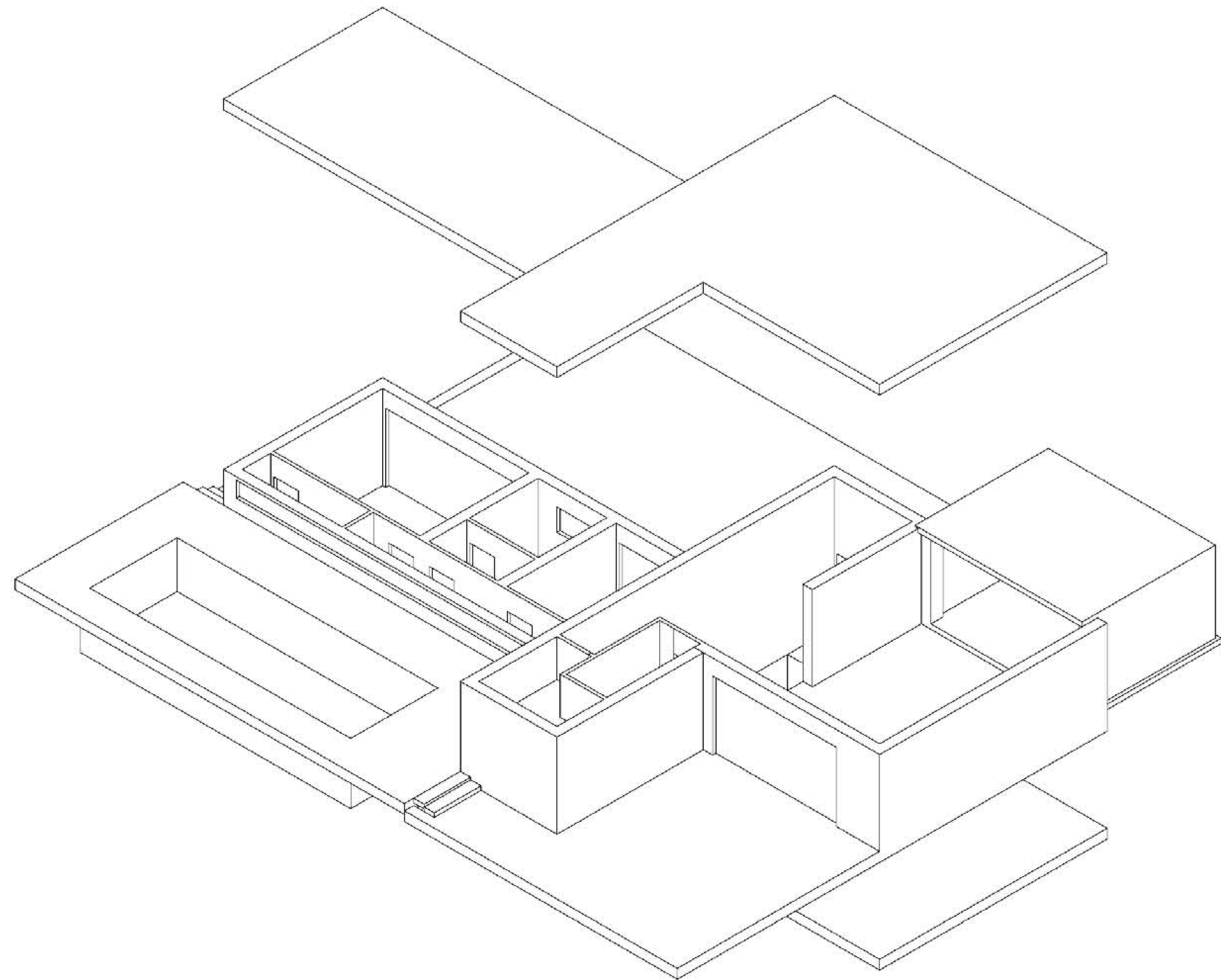
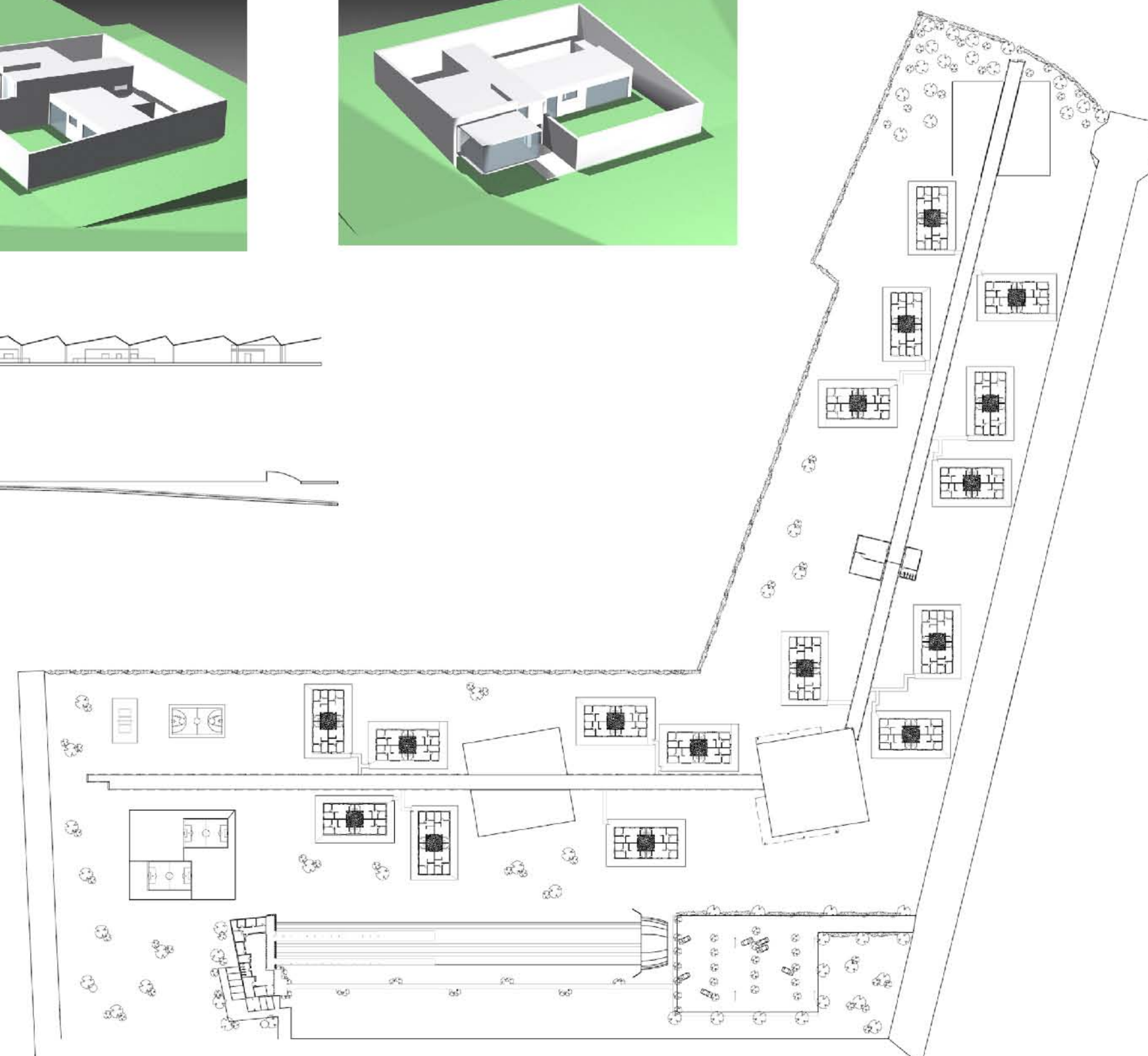
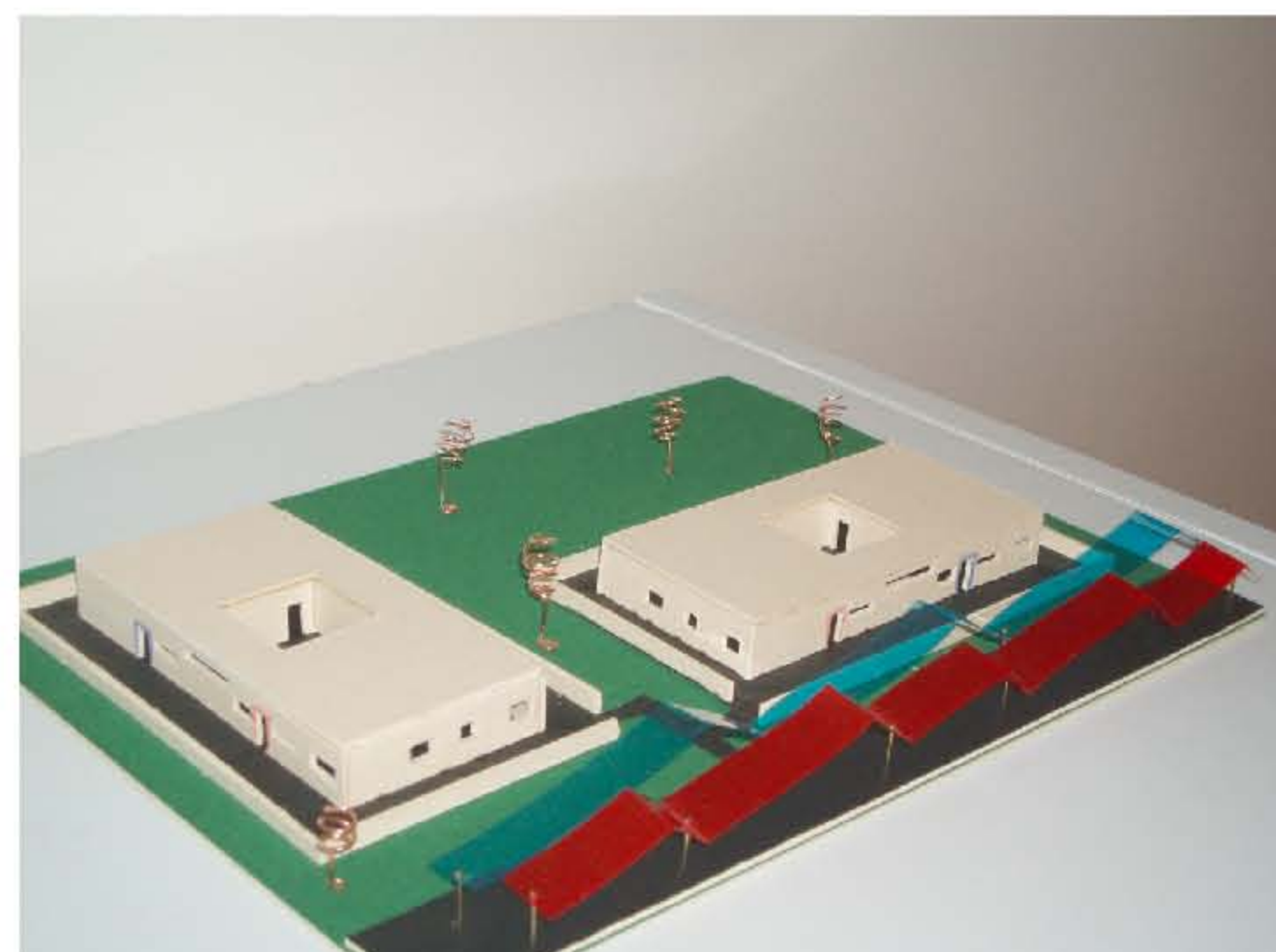
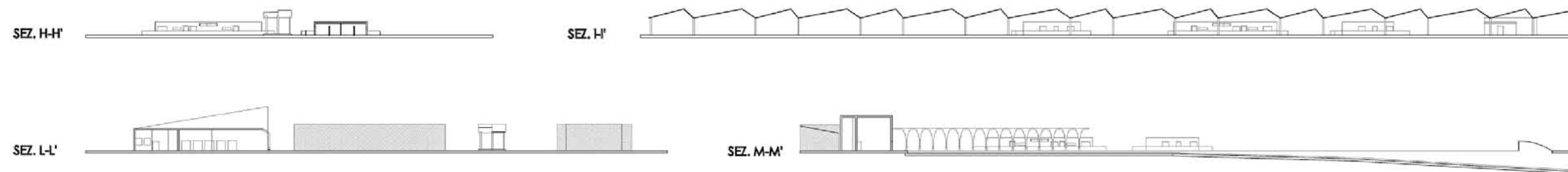


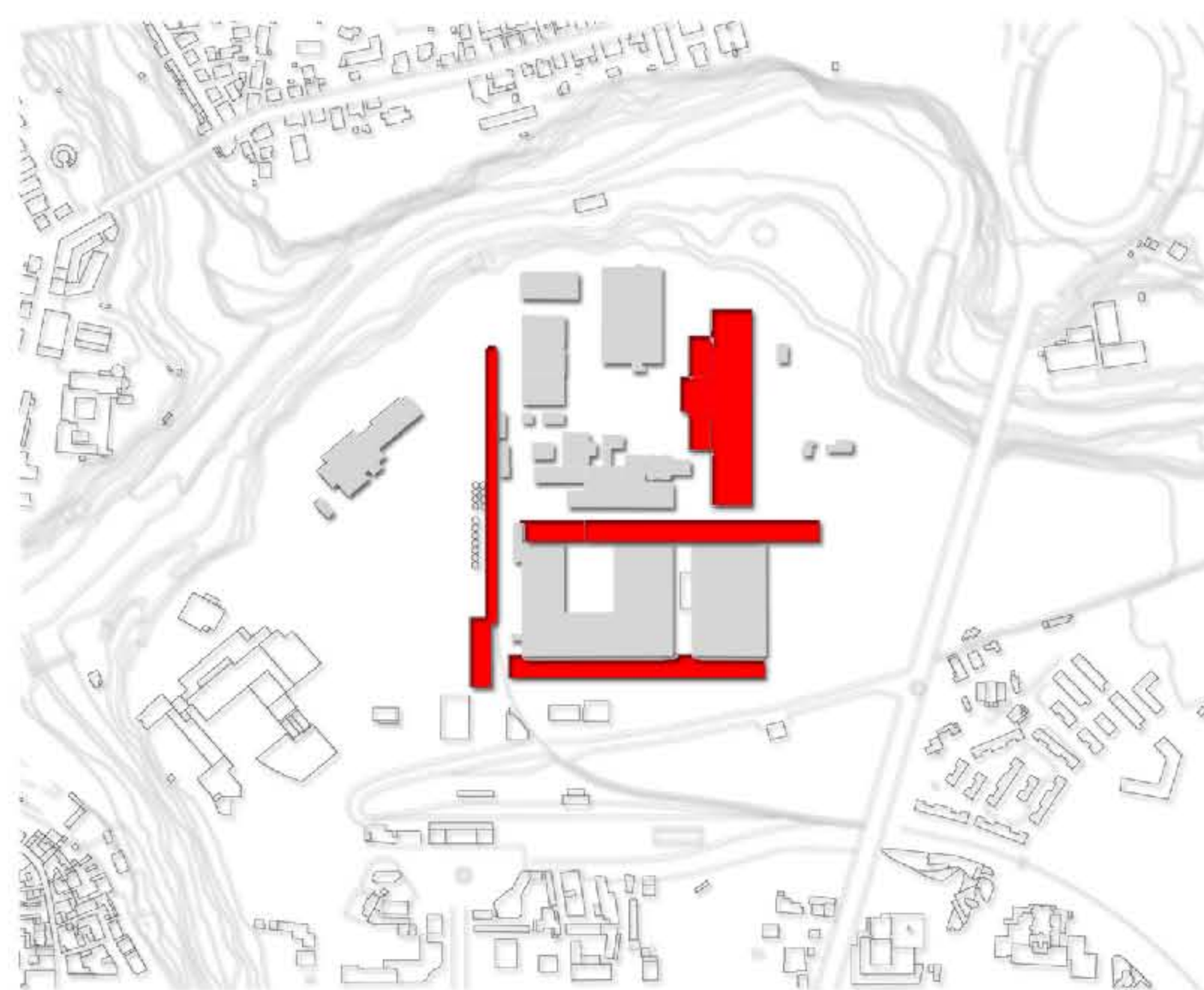
Laboratorio di fondamenti dell'architettura a.a. 2005-2006 Prof.Luigi Coccia



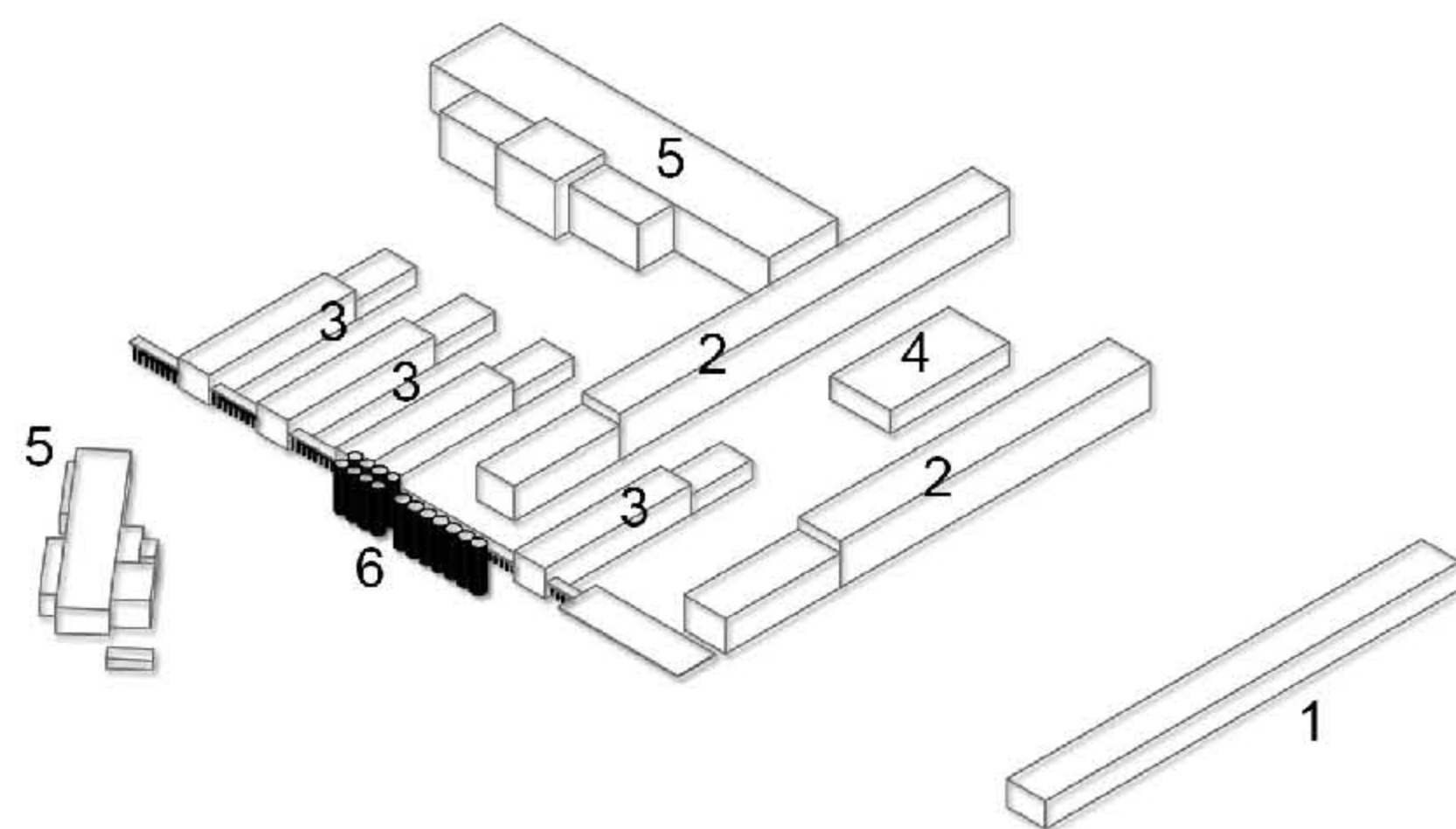
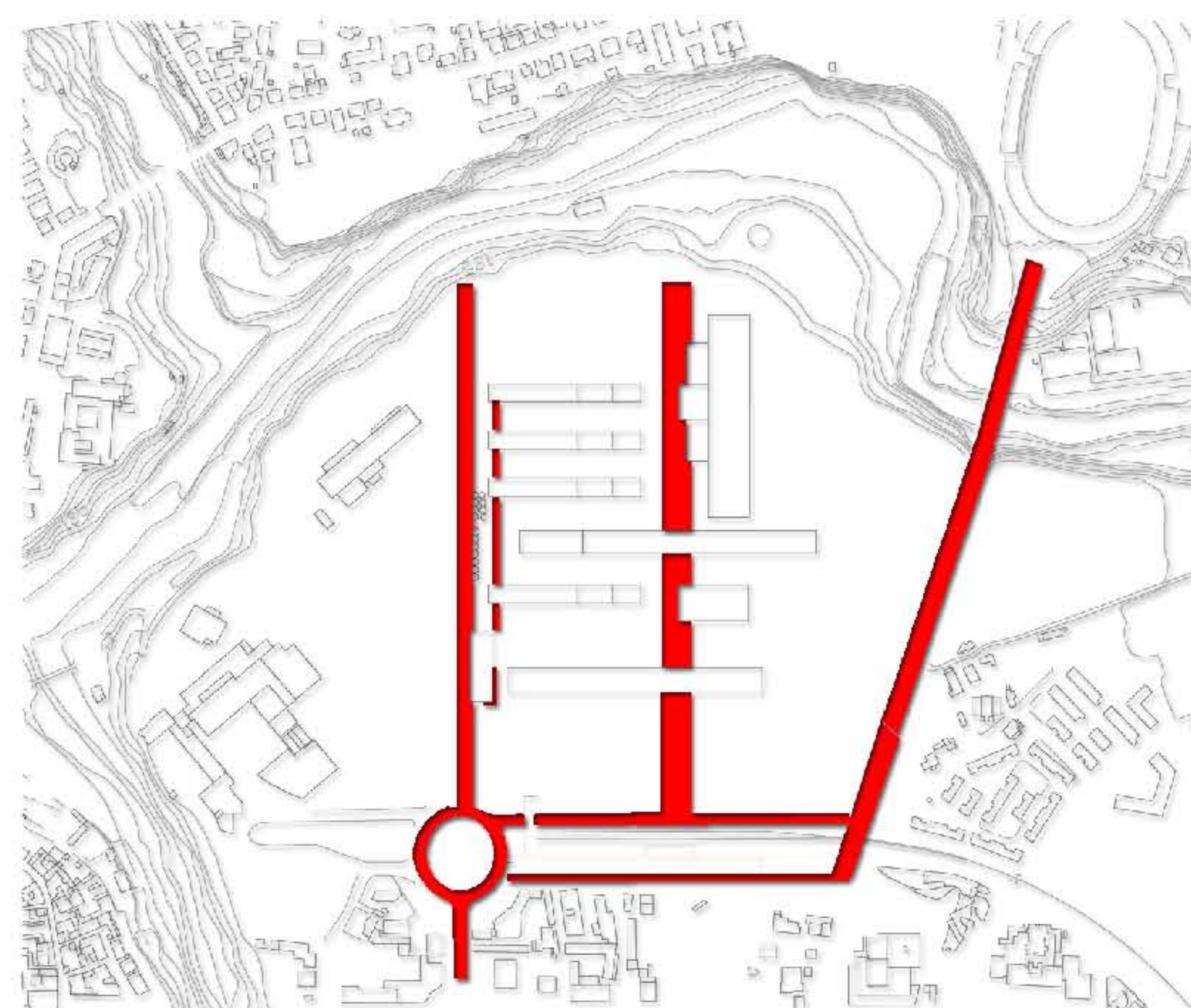
Laboratorio di progettazione architettonica e urbana a.a. 2006-2007 Prof.Francesca Argentero



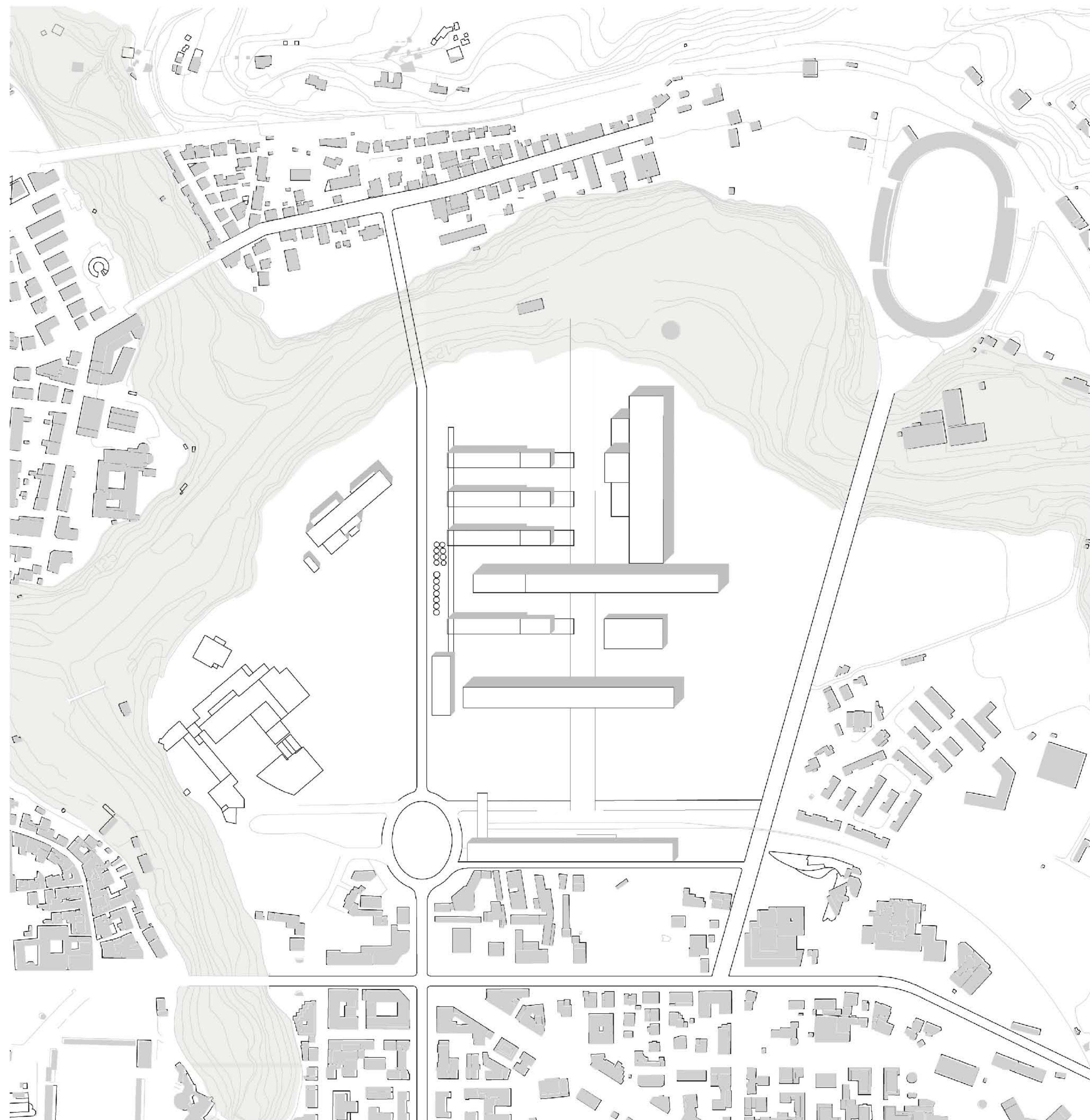
SISTEMA PREESISTENZE



RELAZIONI URBANE E NUOVE CONNESSIONI

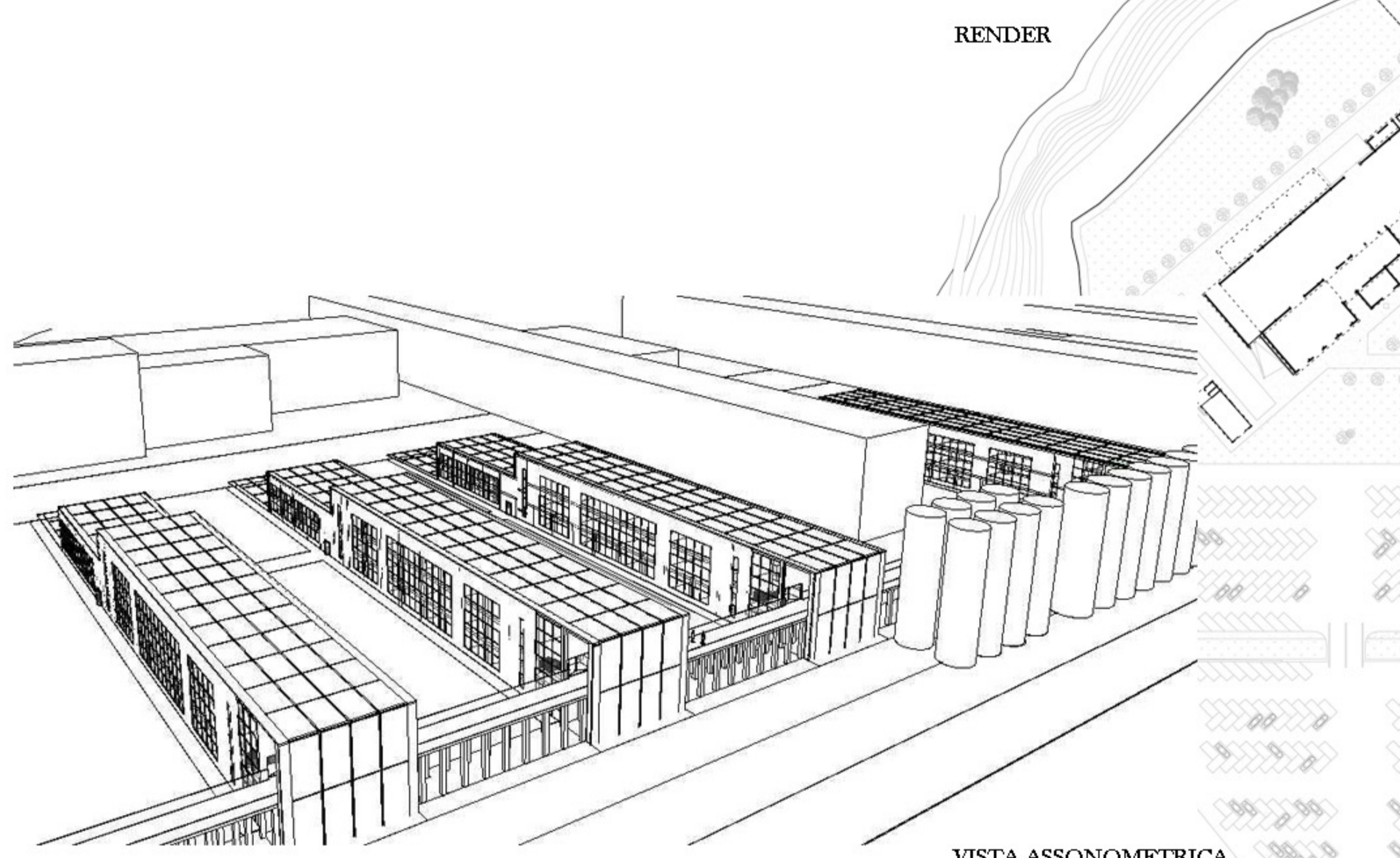


- 1_STAZIONE
- 2_AUDITORIUM-ZONA D'AGGREGAIONE
- 3_POLI DIDATTICI
- 4_MENSA-RISTORANTE
- 5_OFFICINE
- 6_PRESISTENZE

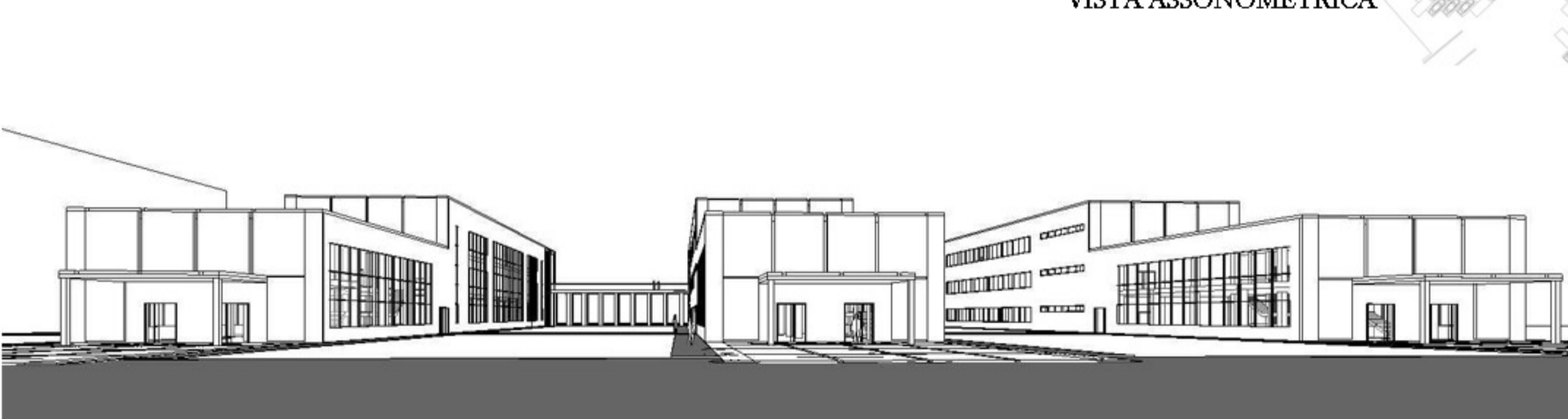




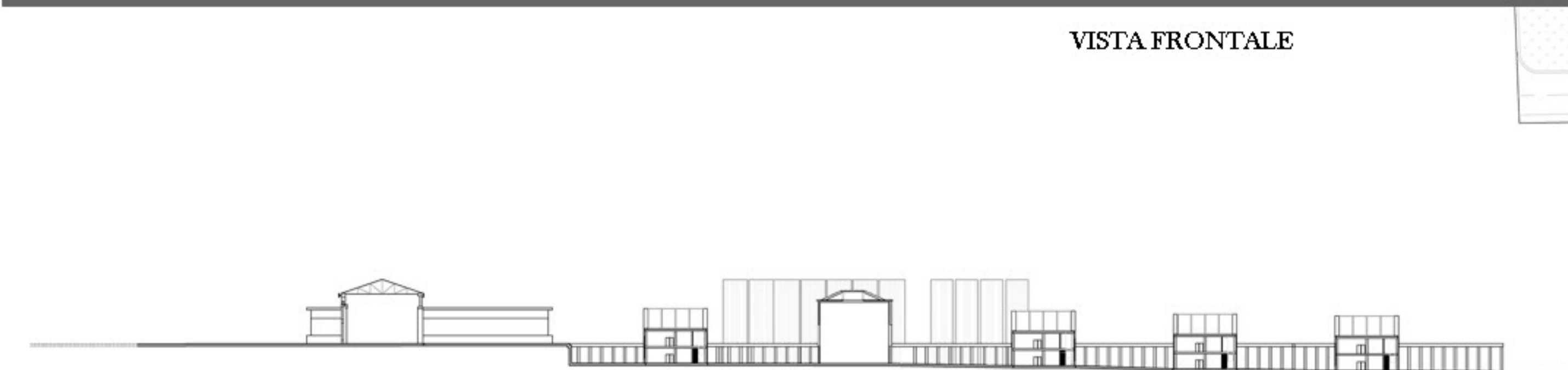
RENDER



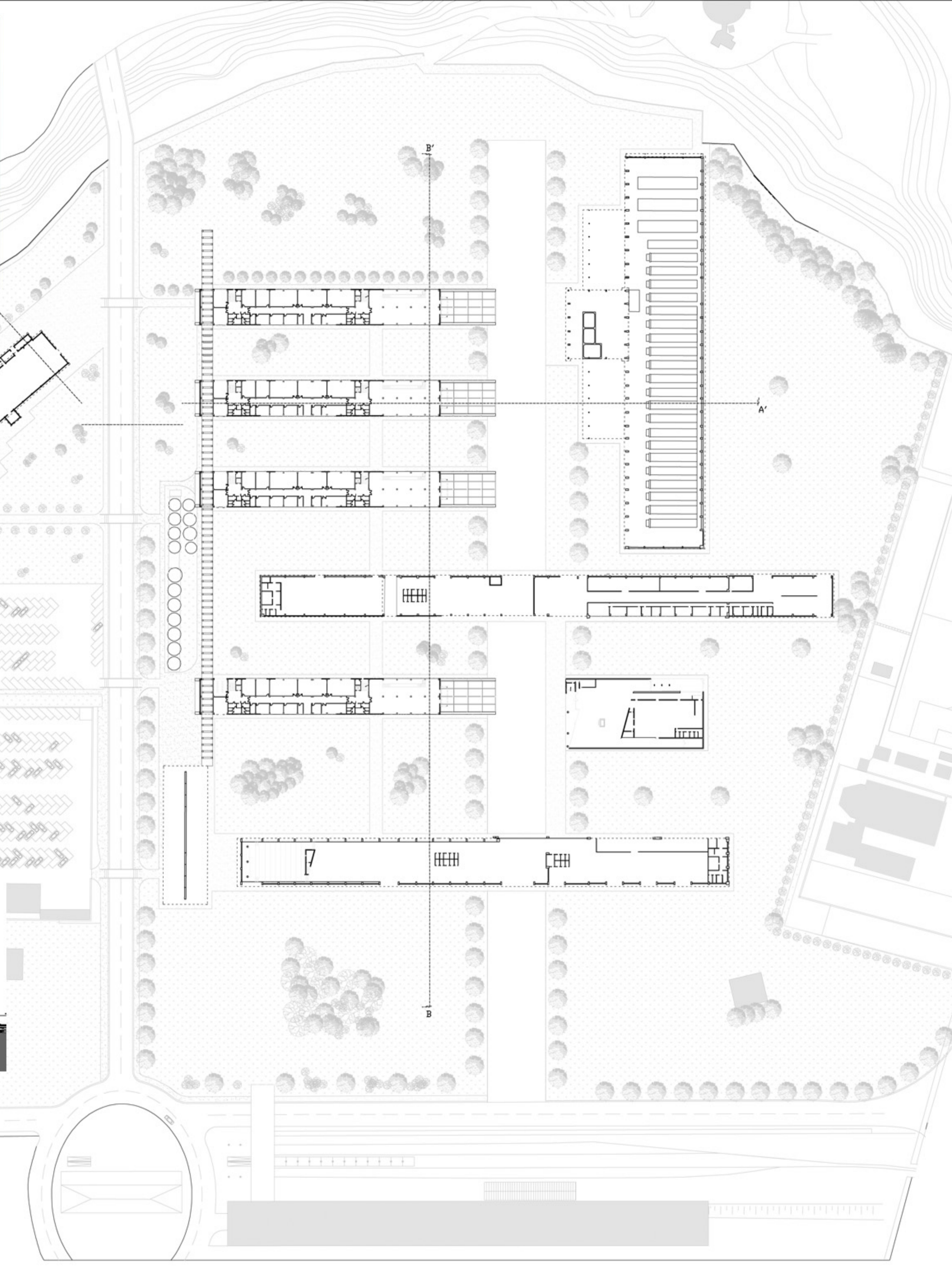
VISTA ASSONOMETRICA



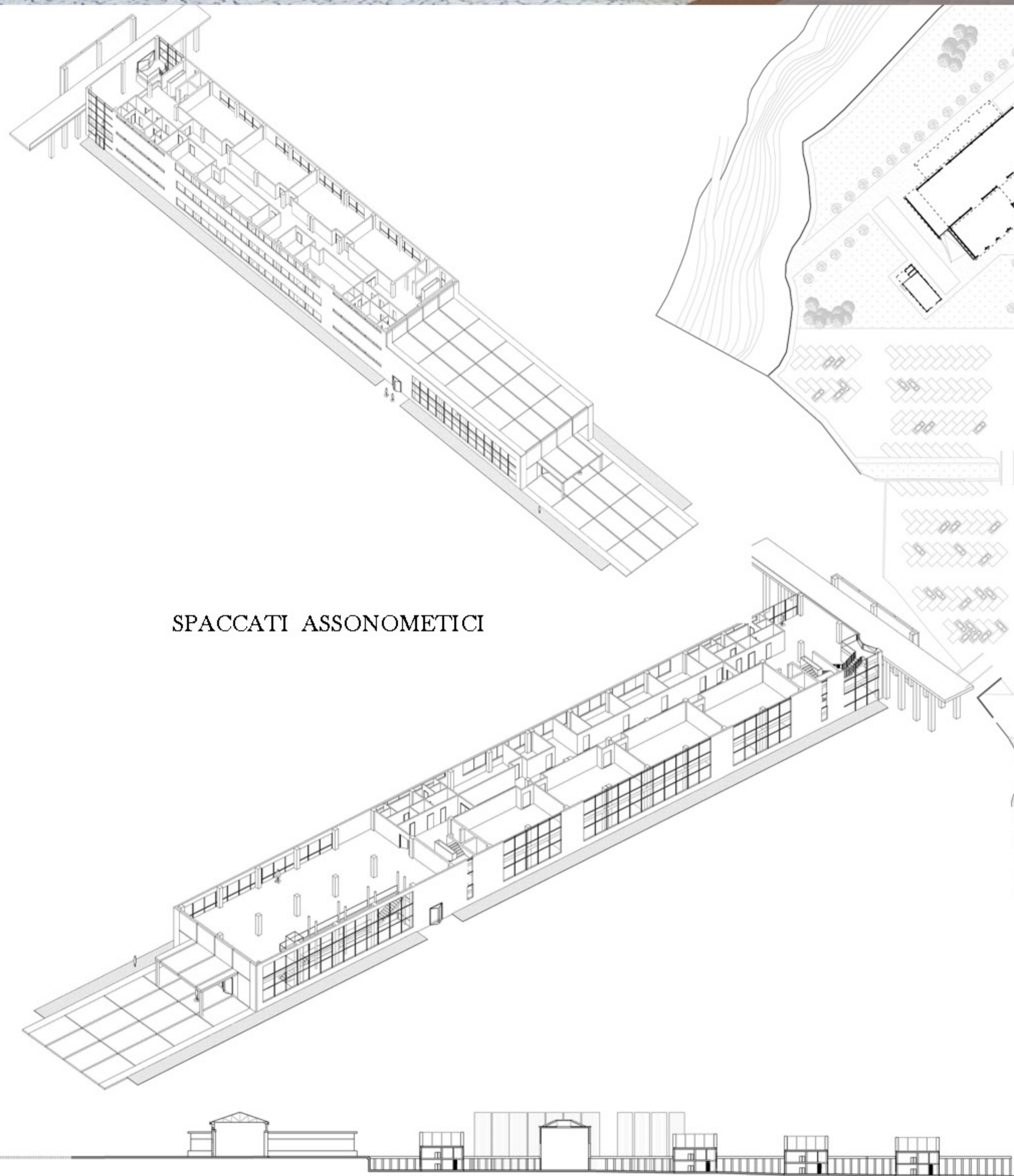
VISTA FRONTALE



SEZIONE B-B'

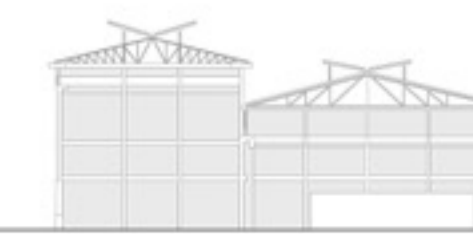
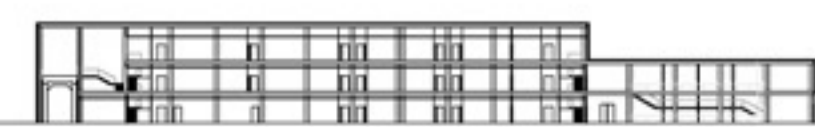


SEZIONE A-A'

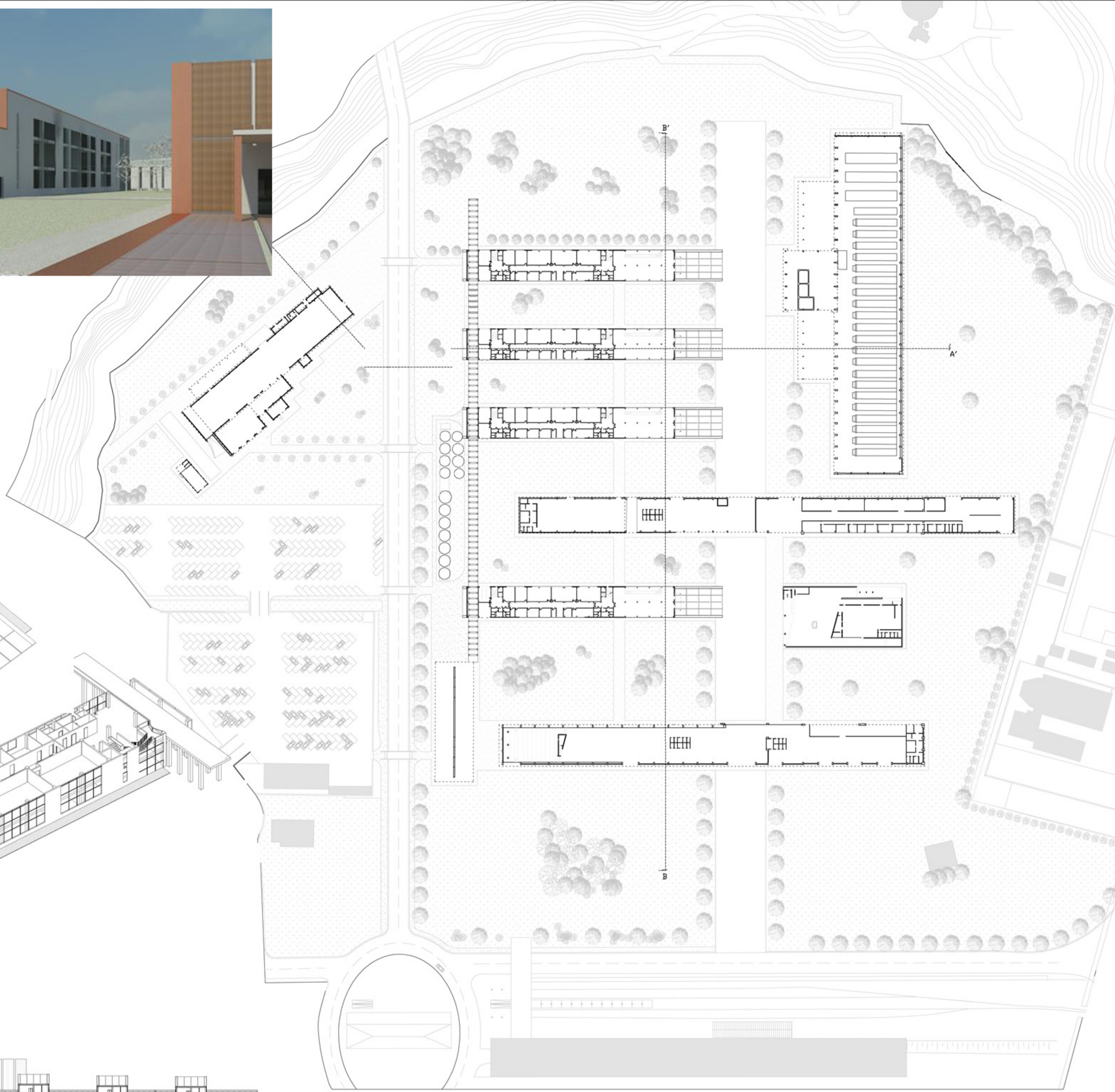


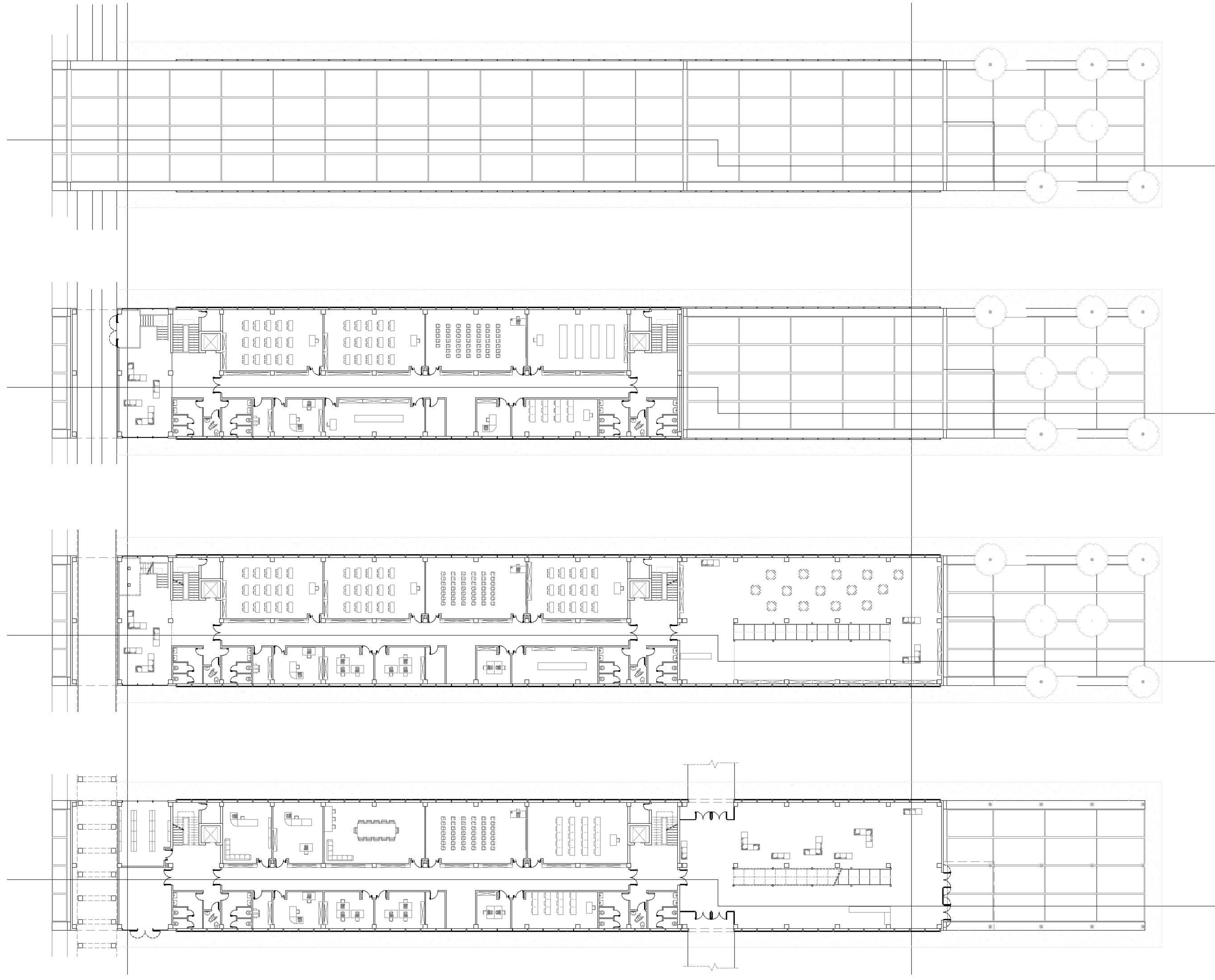
SPACCATI ASSONOMETICI

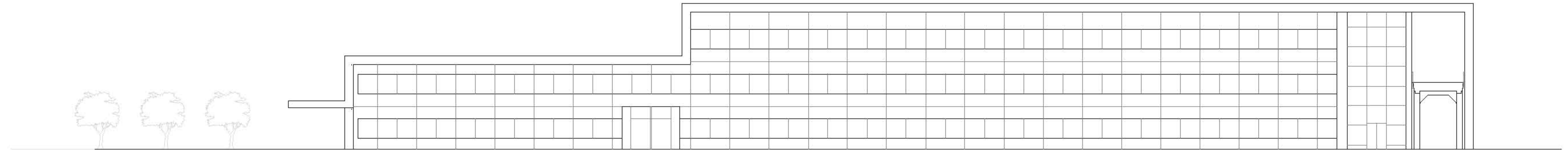
SEZIONE B-B'



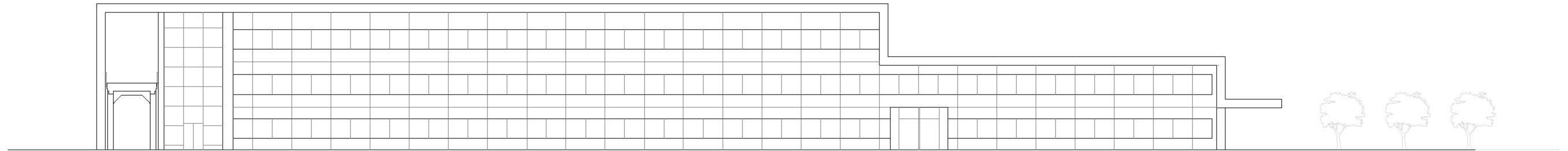
SEZIONE A-A'



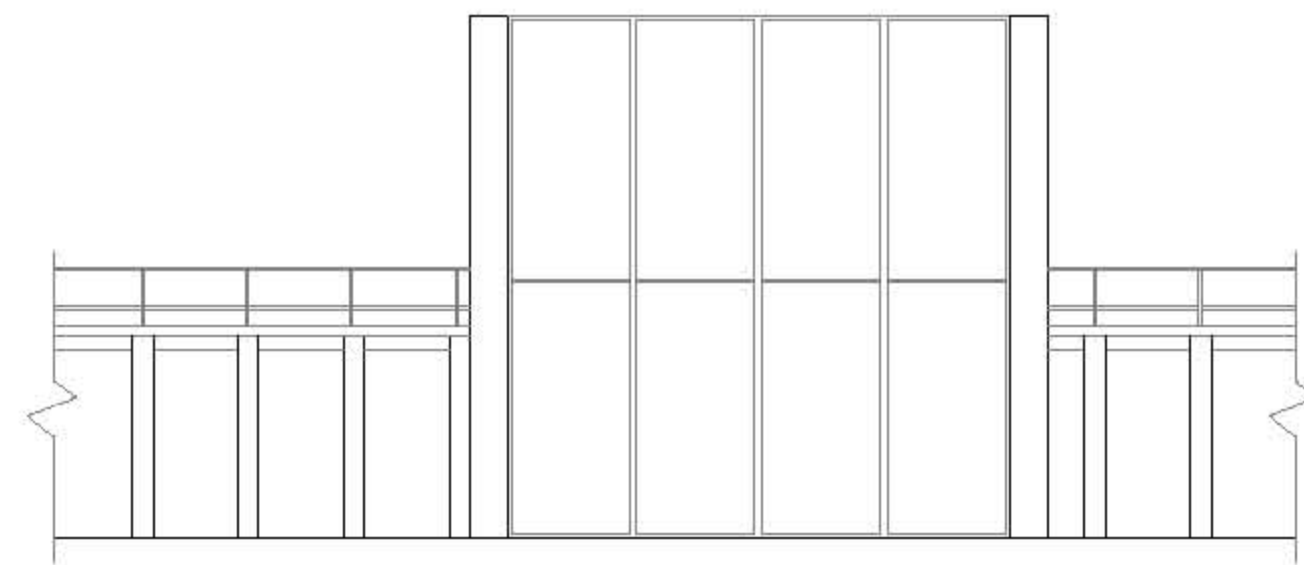




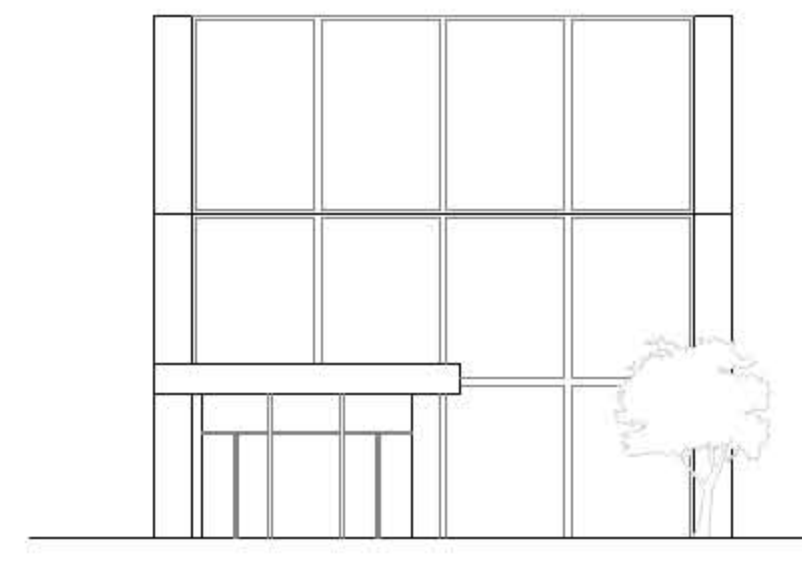
PROSPETTO n



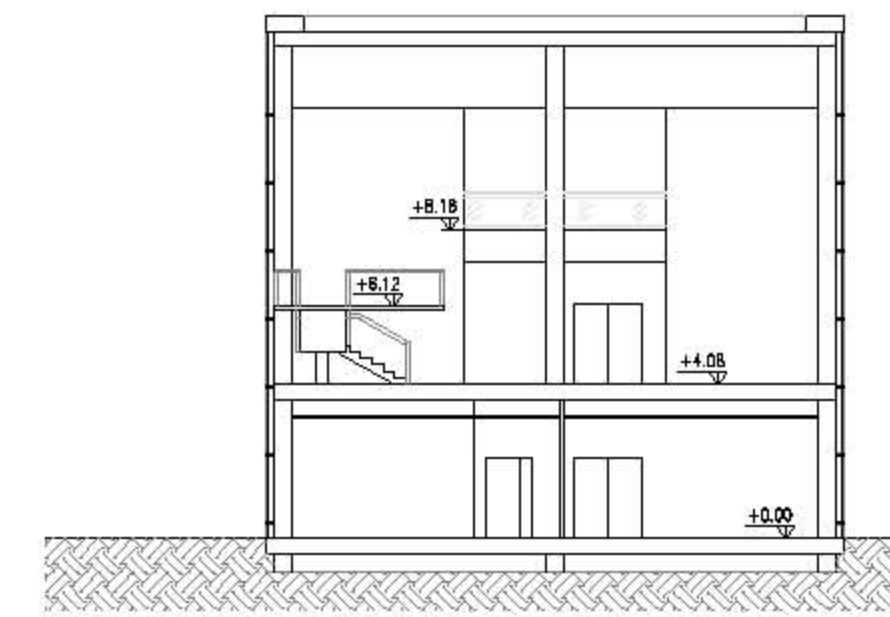
PROSPETTO SUD



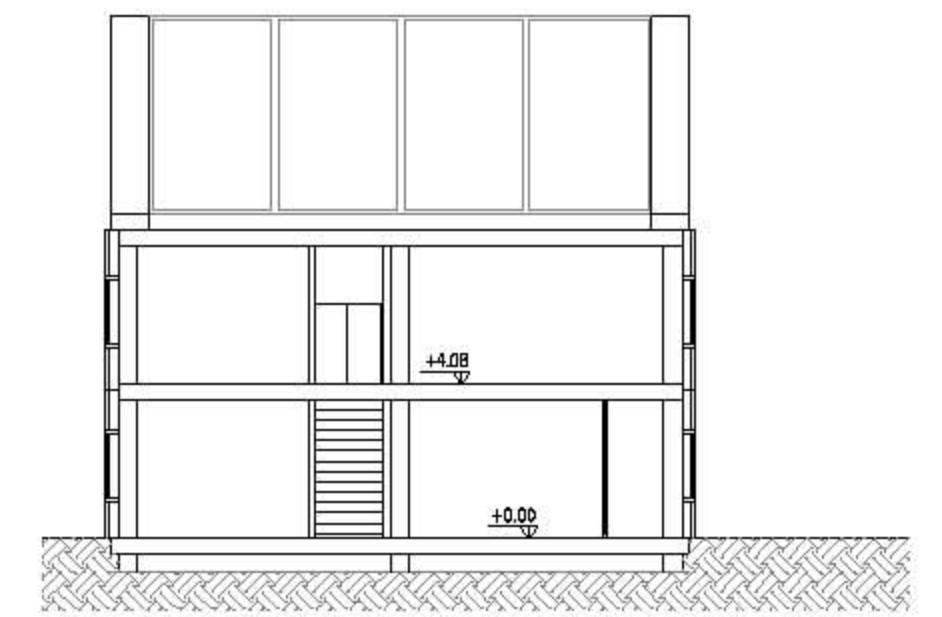
PROSPETTO OVEST



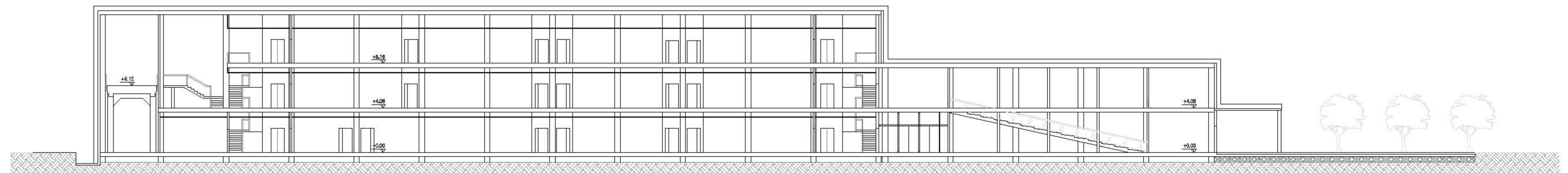
PROSPETTO EST



SEZIONE B-B'

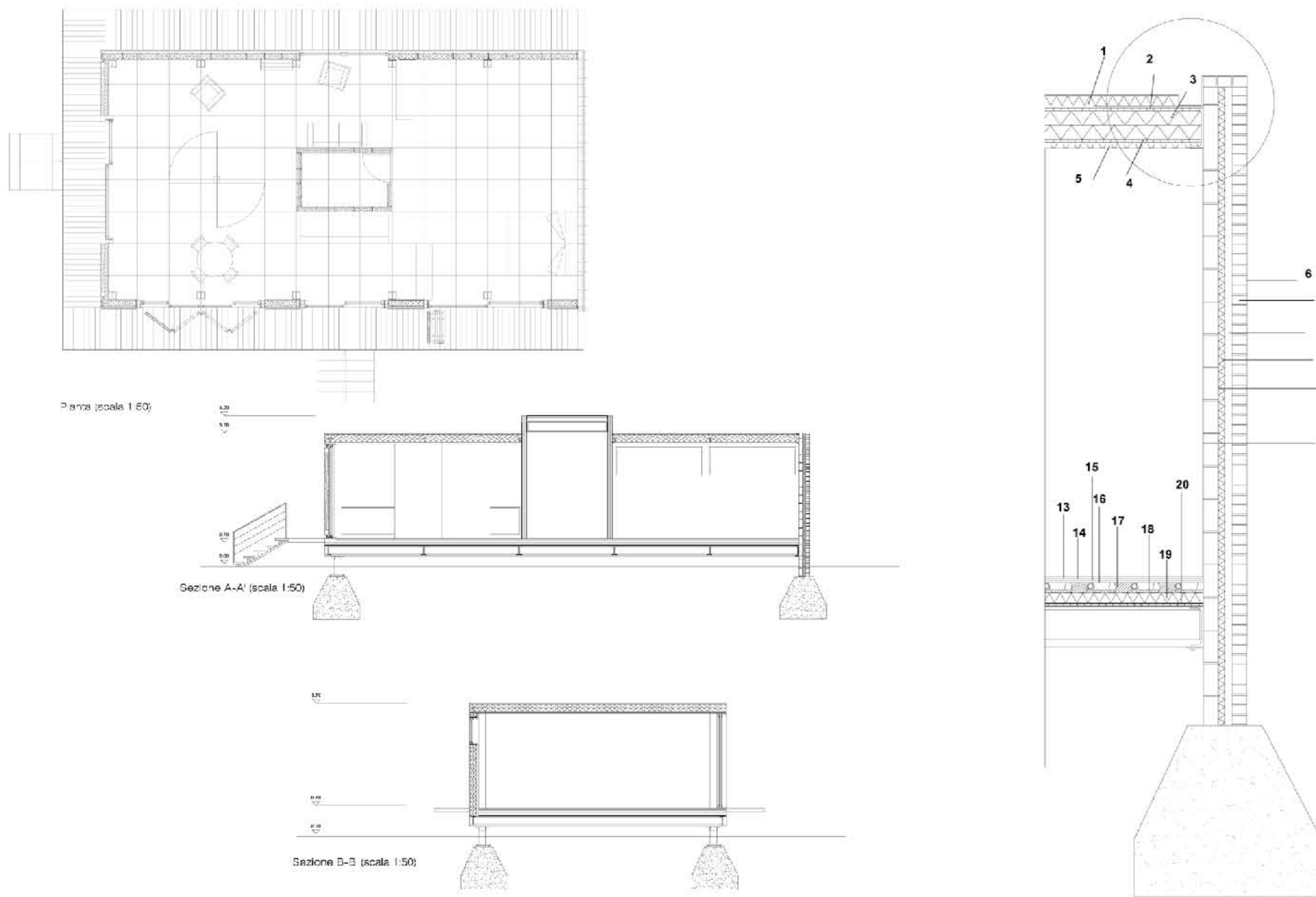


SEZIONE C-C'



SEZIONE A-A'

Laboratorio di costruzione dell'architettura a.a. 2007-2008 Prof.Massimo Ferricoli



SOLAIO DI COPERTURA

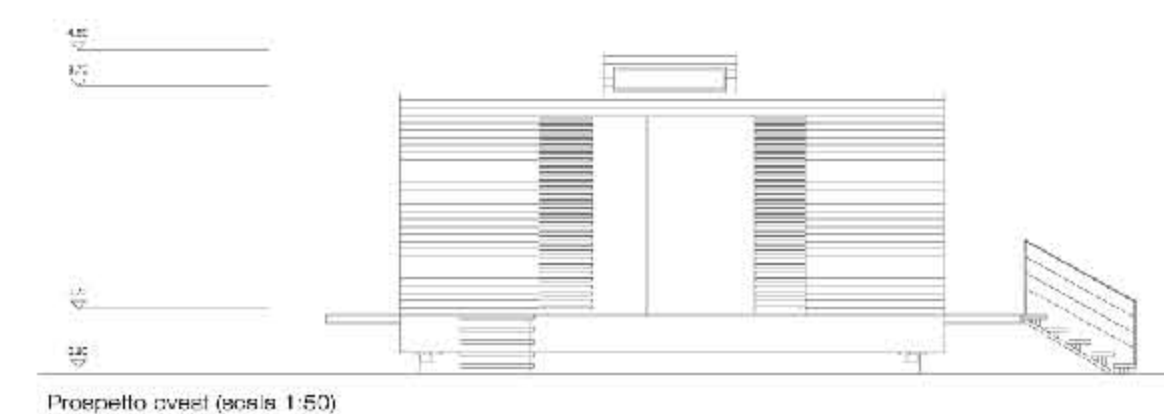
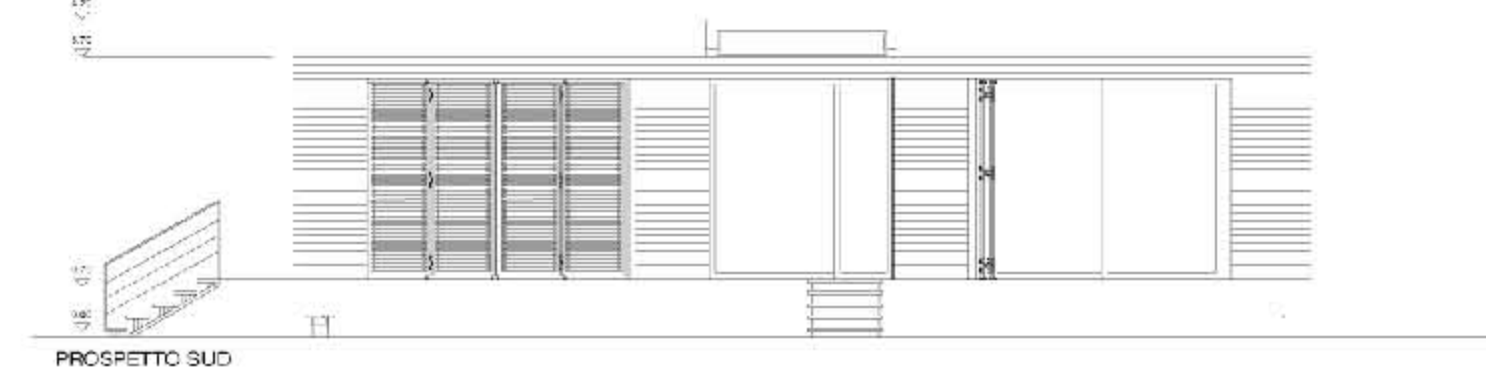
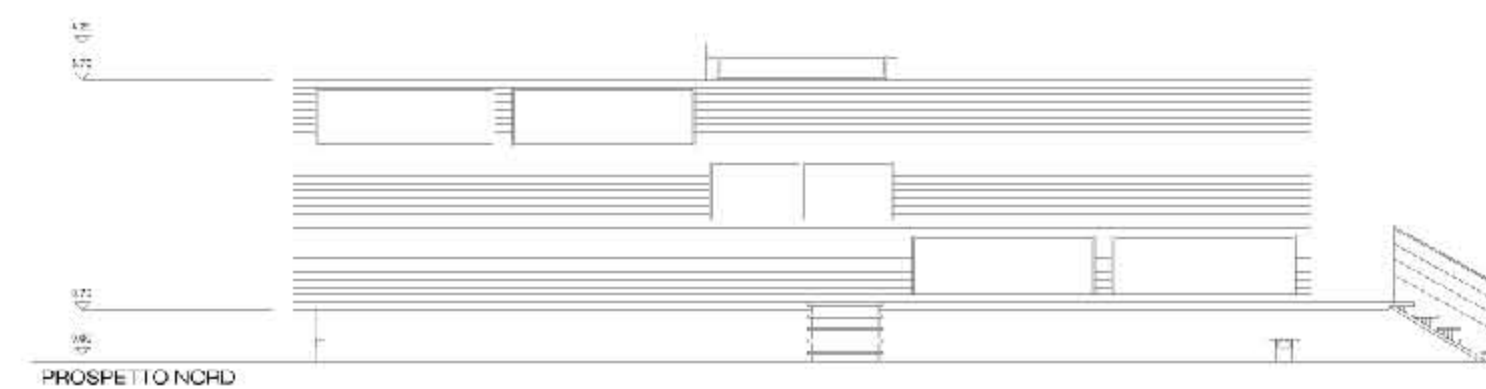
1. strisce carta catramata 0.01 mm
2. stato di isolamento 0.02 mm con compensazione della pressione dei vapori
3. isolante in lana di roccia, 200 mm, ROCKWOOL
4. barriera al vapore 0.02 mm
5. lamiera trapezoidale in acciaio, E40, 0.04 mm

MURO PERIMETRALE

6. intonaco in gesso 0.005 mm
7. mattoni forati in laterizio 100 mm
8. intercapedine d'aria 0.05 mm
9. isolante di lana di roccia, 0.045 mm, ROCKWOOL
10. intonaco in calce e cemento 0.005 mm
11. mattoni semipieni 100 mm
12. intonaco in calce e cemento 0.005 mm

SOLAIO DI CALPESTIO

13. pavimento in parquet 0.02 mm
14. collante 0.0012 mm
15. massetto secco con piastre di cartongesso Fermacell 2x12.5 mm
16. lamiera per la conduzione termica 0.0012 mm
17. tubo DUO diametro 0.046 mm
18. guaina impermeabilizzante TENAX DP1 0.003 mm
19. isolante in lana di roccia ROCKWOOL 0.07 mm
20. tavolato in legno 0.02 mm



Laboratorio di progettazione urbanistica a.a. 2007-2008 Prof. Gabriele Mastrigli

