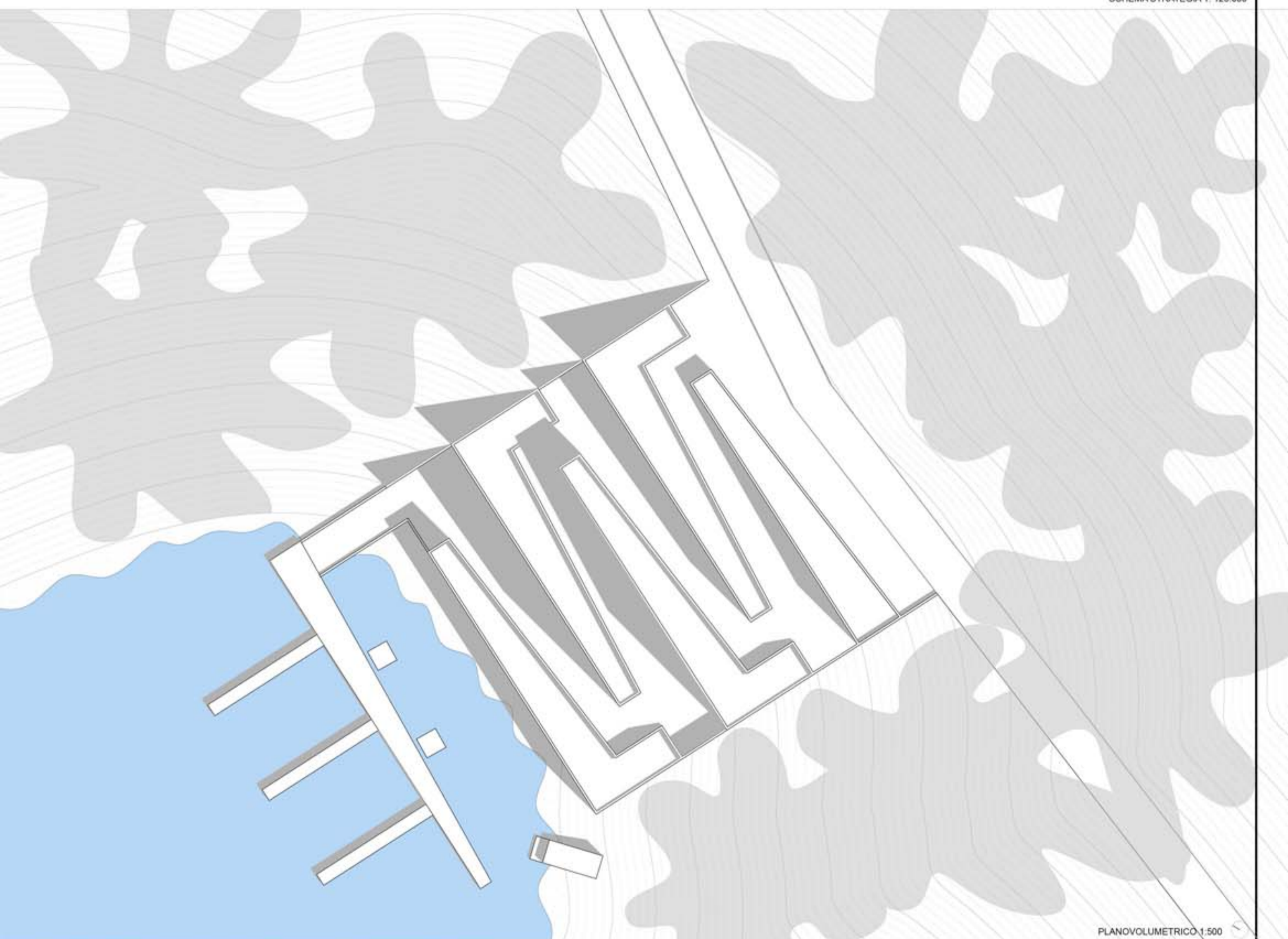
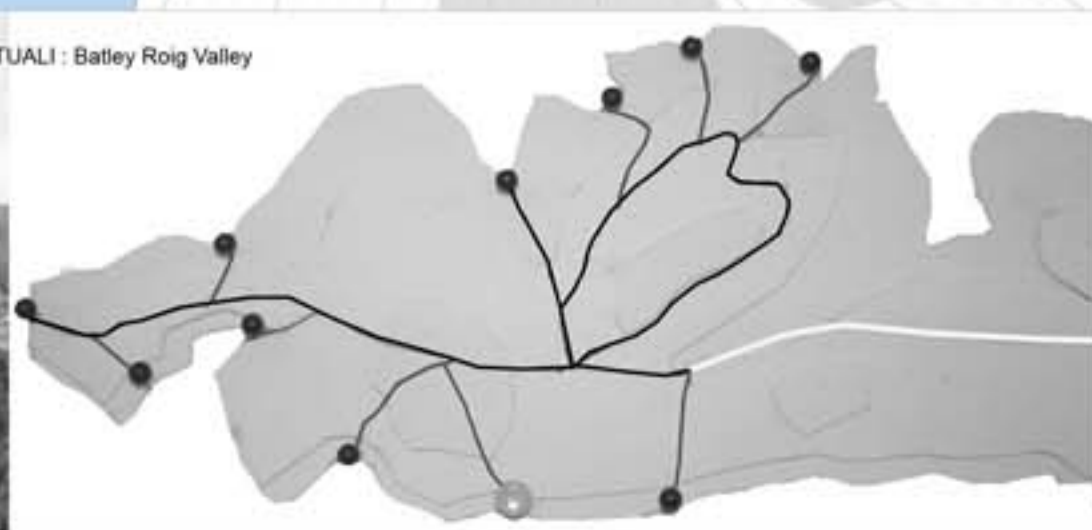


SCHEMA STRATEGIA 1: 125.000



PLANOVOLUMETRICO 1:500

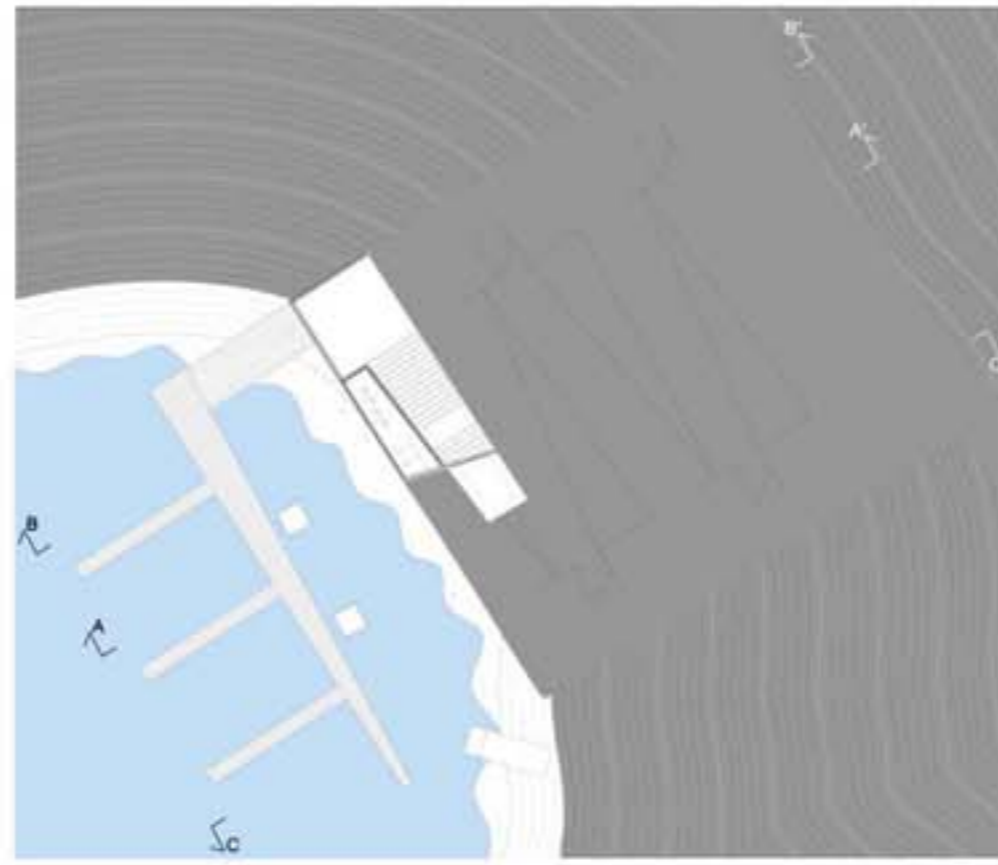
CONCEPTS E RIFERIMENTI PROGETTUALI : Batley Roig Valley



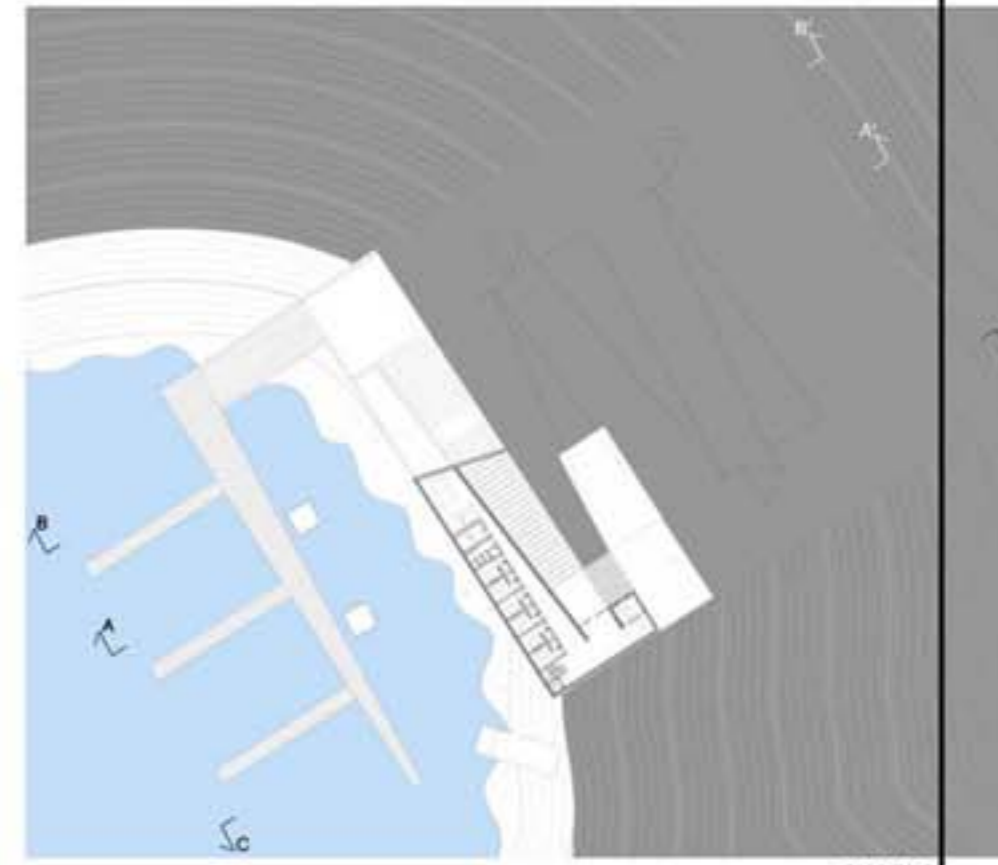
PIANTE SCALA 1 : 1000



QUOTA 0

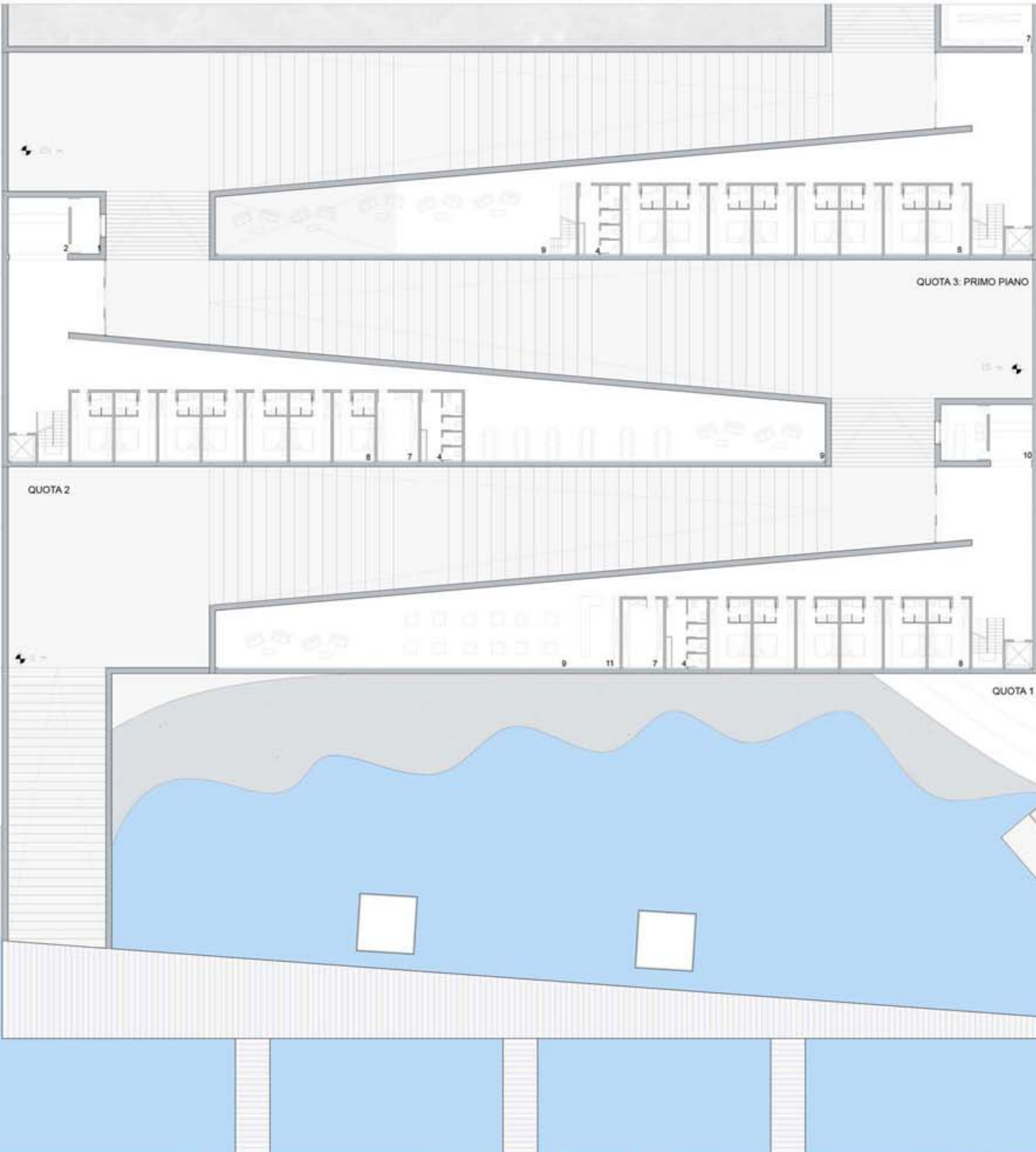


QUOTA 1

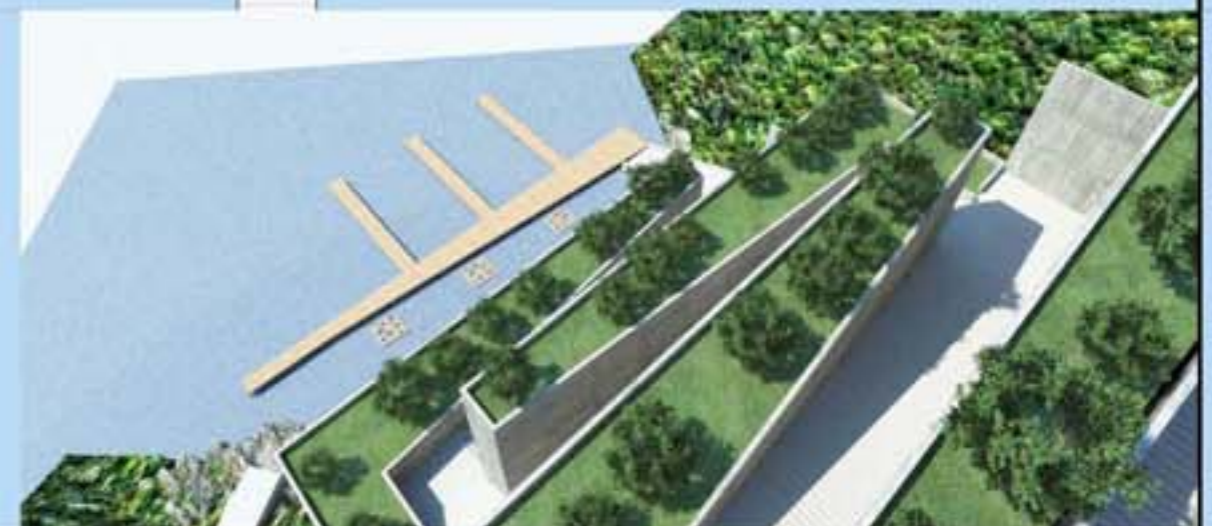


QUOTA 2

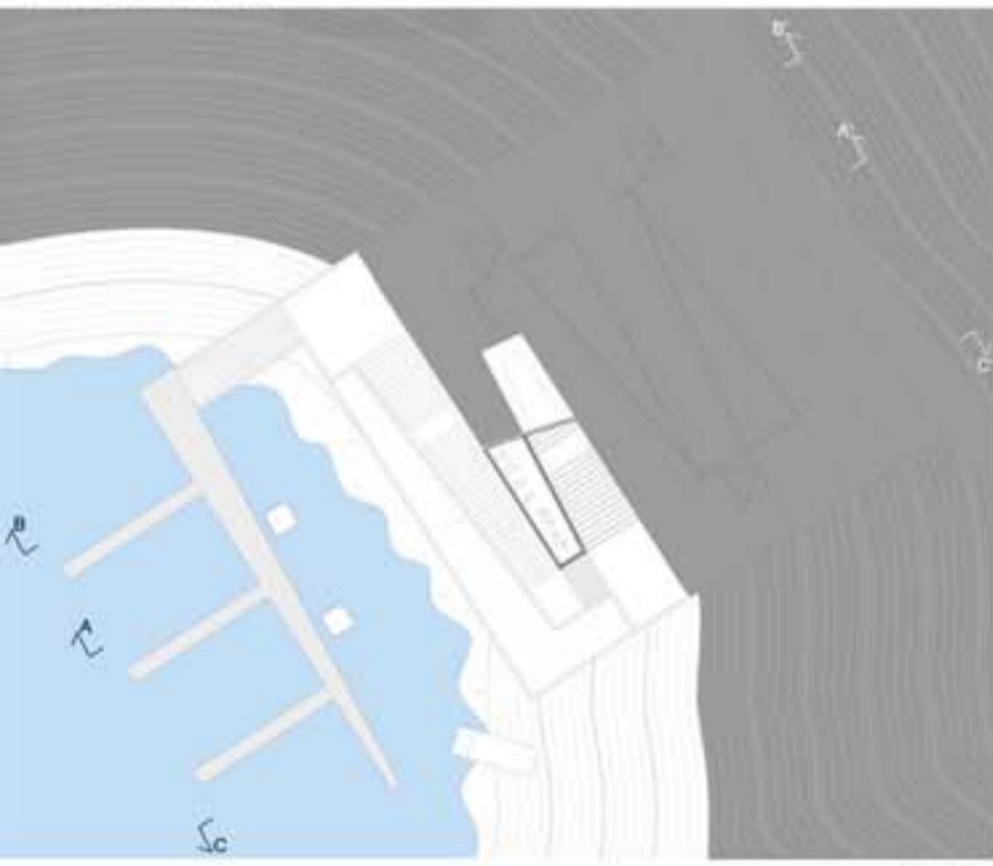
SCALA 1 : 200



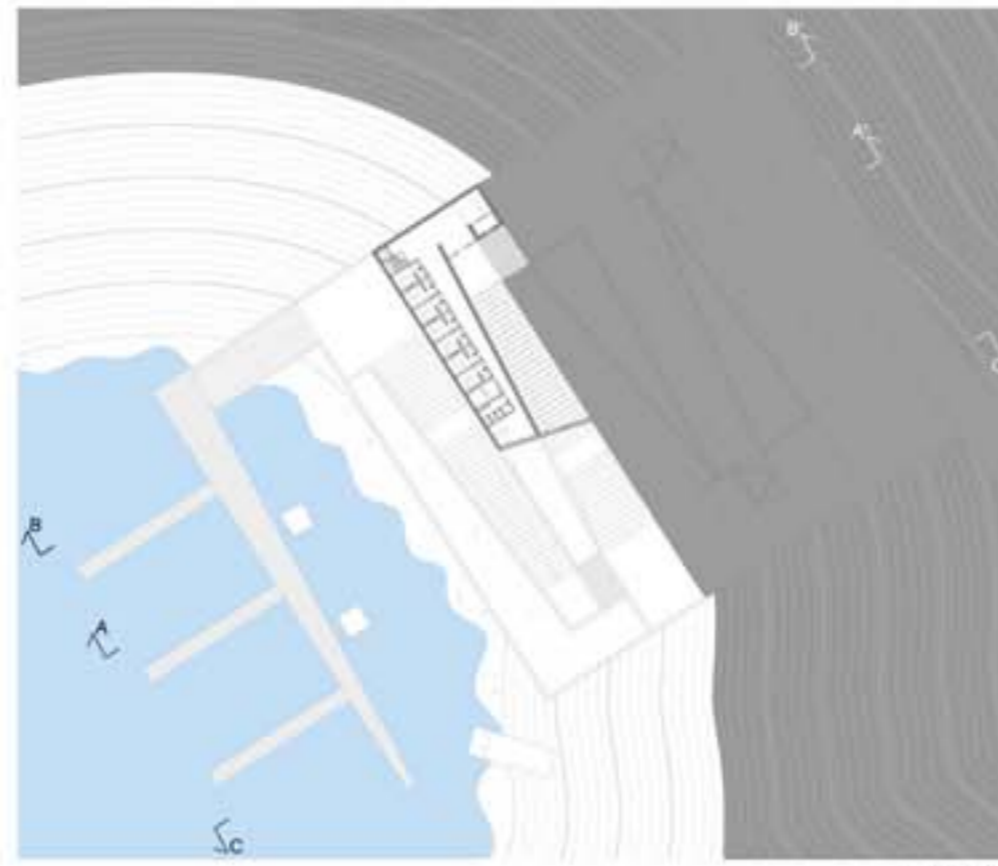
- LEGENDA**
- 1- Magazzino
 - 2- Bar
 - 3- Ristorante
 - 4- Bagni
 - 5- Spogliatoio
 - 6- Cucina
 - 7- Stanza di servizio
 - 8- Stanze da letto
 - 9- Spazio comune
 - 10- Reception
 - 11- Connetteria
 - 12- Cabine



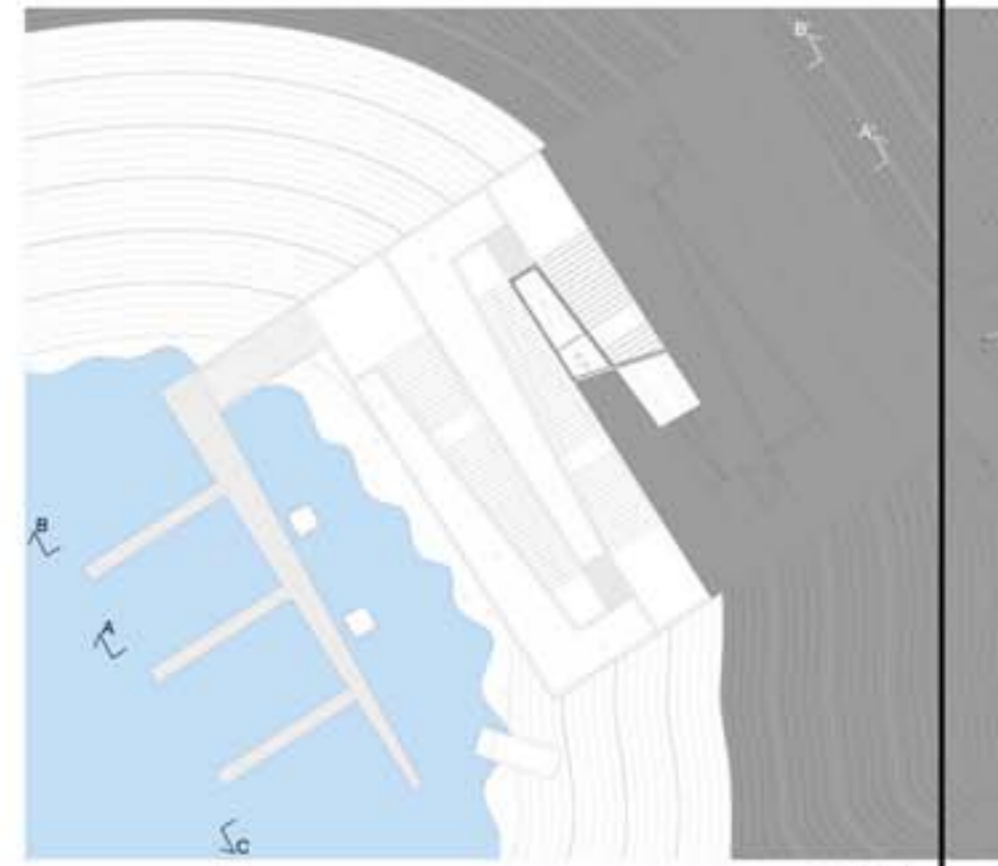
PIANTE SCALA 1:1000



QUOTA 3

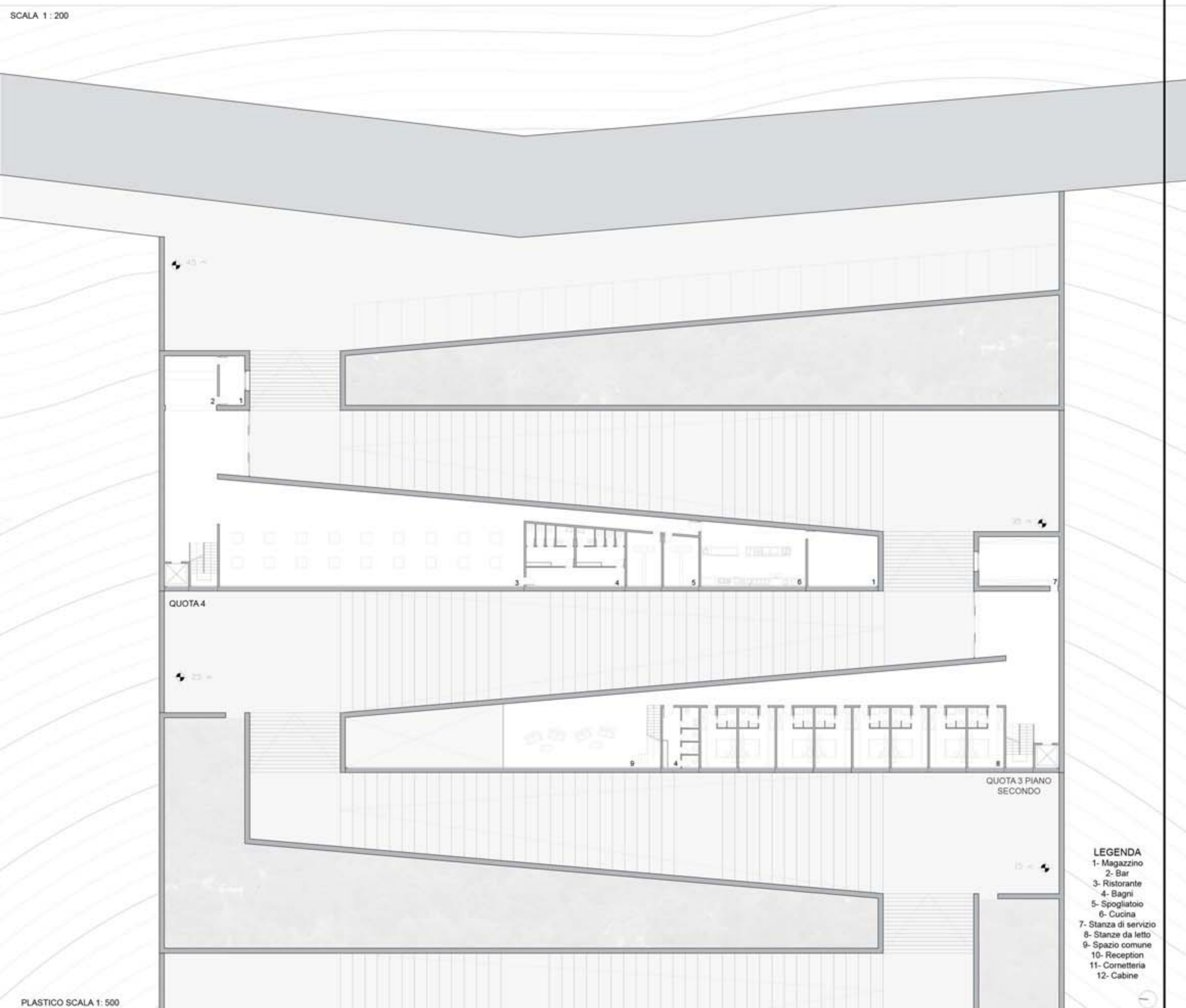


QUOTA 4



QUOTA 5

SCALA 1:200

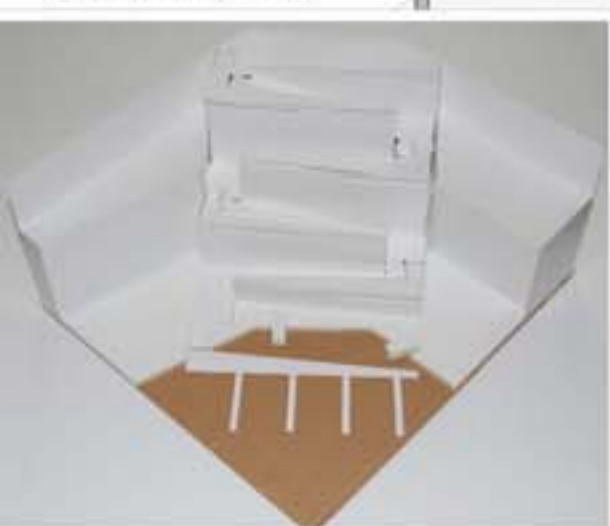


QUOTA 4

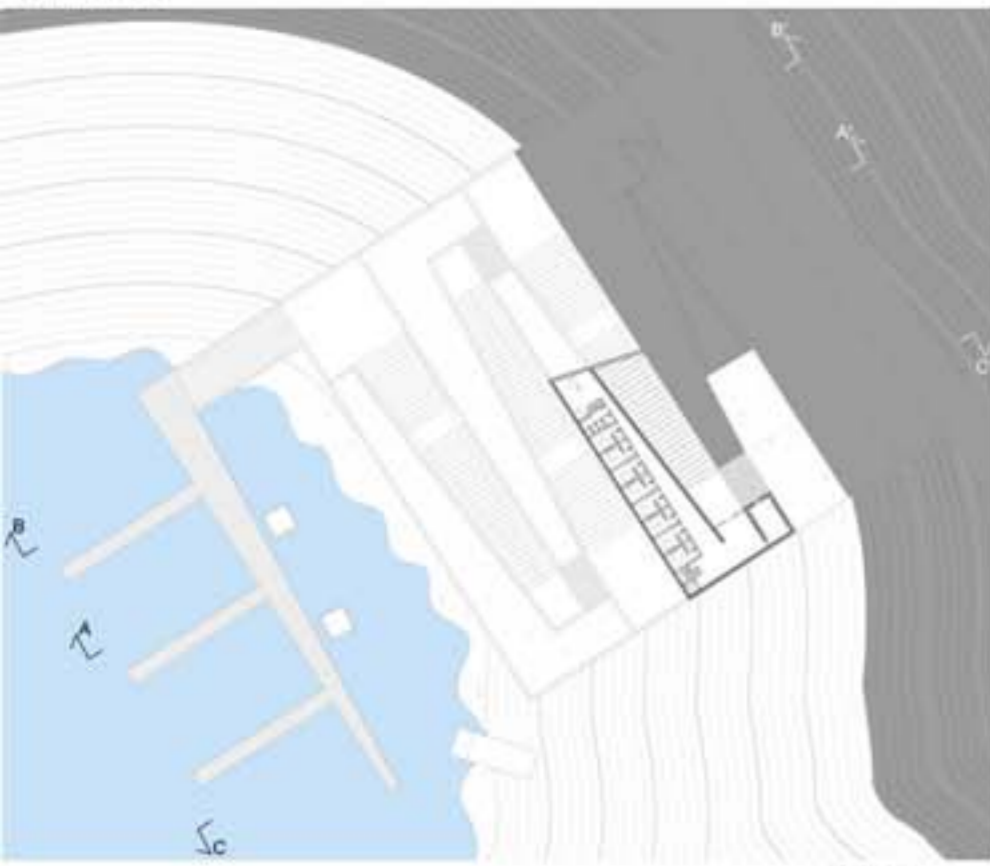
QUOTA 3 PIANO SECONDO

- LEGENDA**
- 1- Magazzino
 - 2- Bar
 - 3- Ristorante
 - 4- Bagni
 - 5- Spogliatoio
 - 6- Cucina
 - 7- Stanza di servizio
 - 8- Stanze da letto
 - 9- Spazio comune
 - 10- Reception
 - 11- Cornerteria
 - 12- Cabine

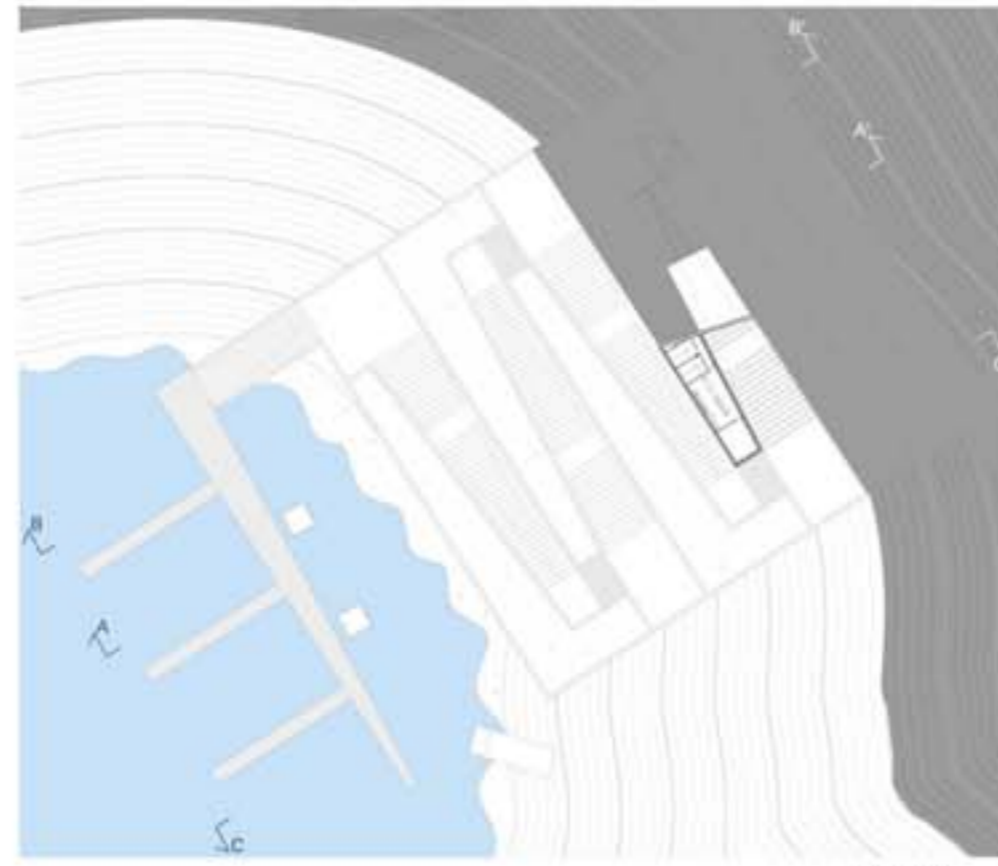
PLASTICO SCALA 1:500



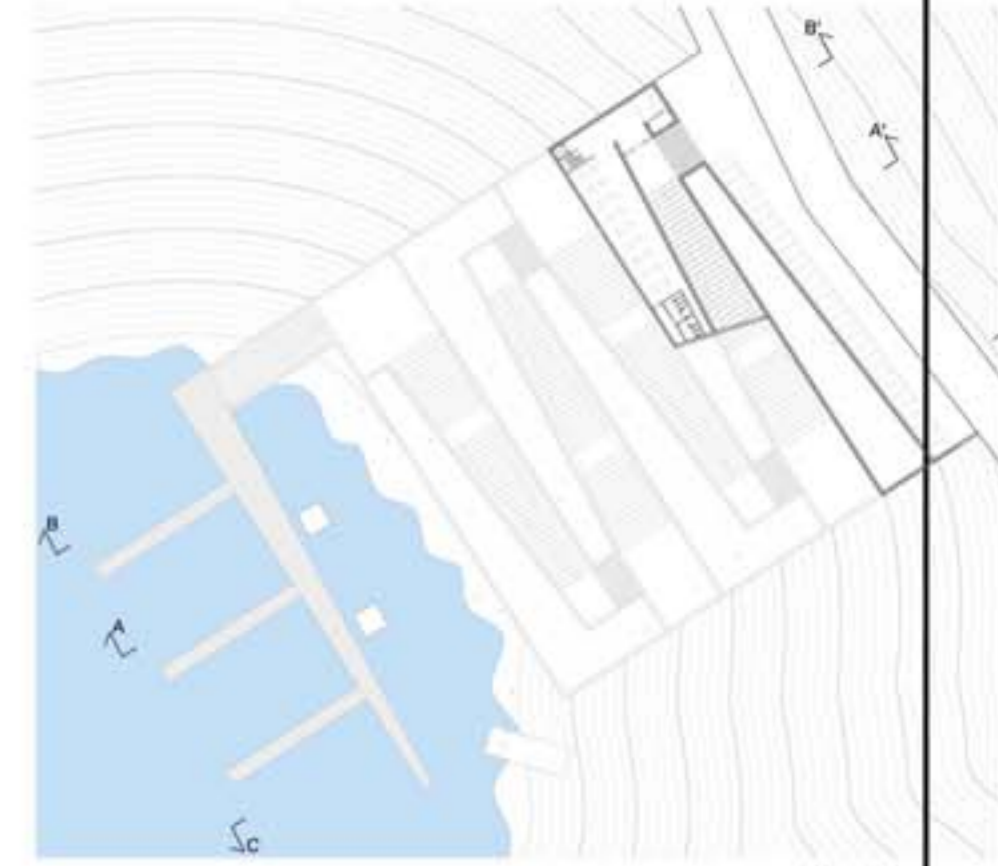
SCALA 1: 1000



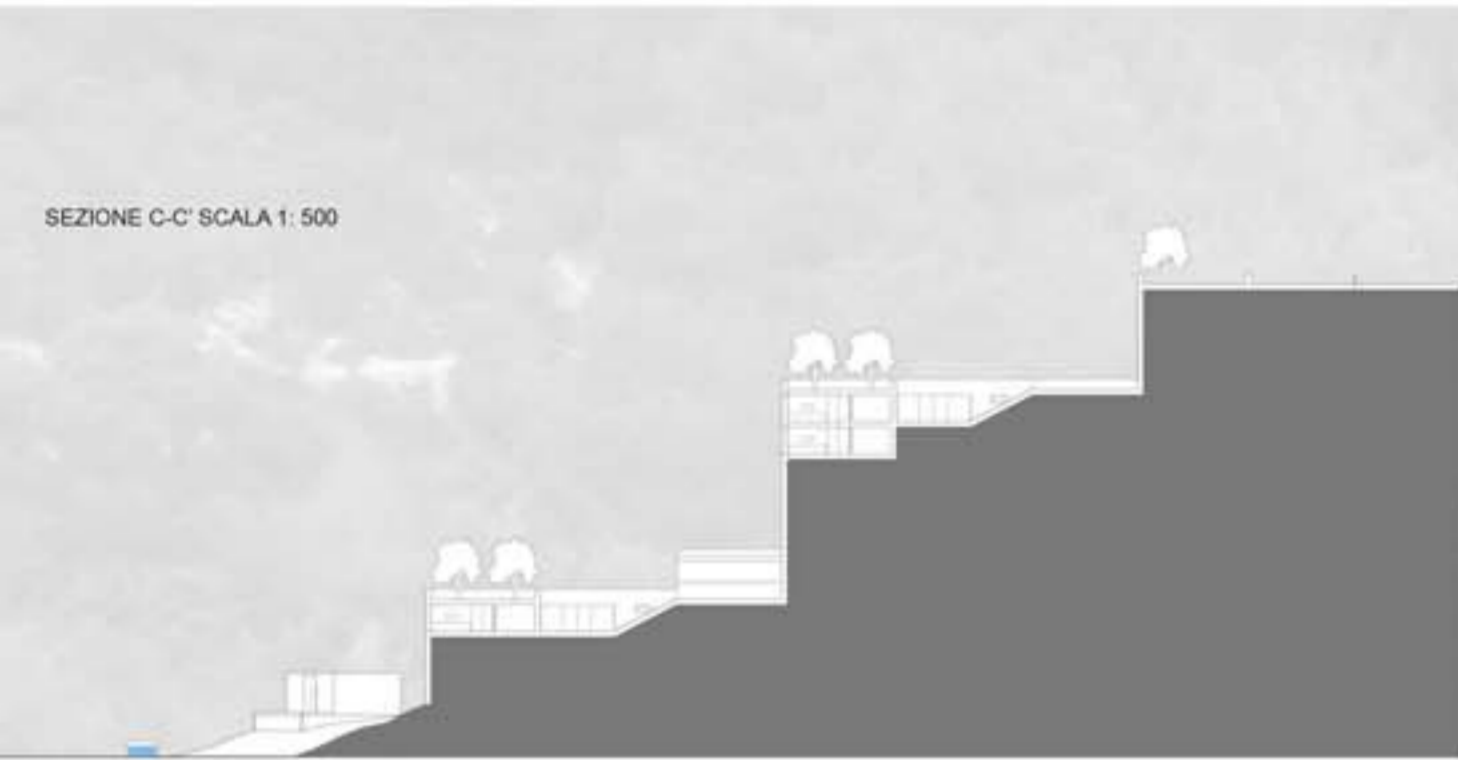
QUOTA 6



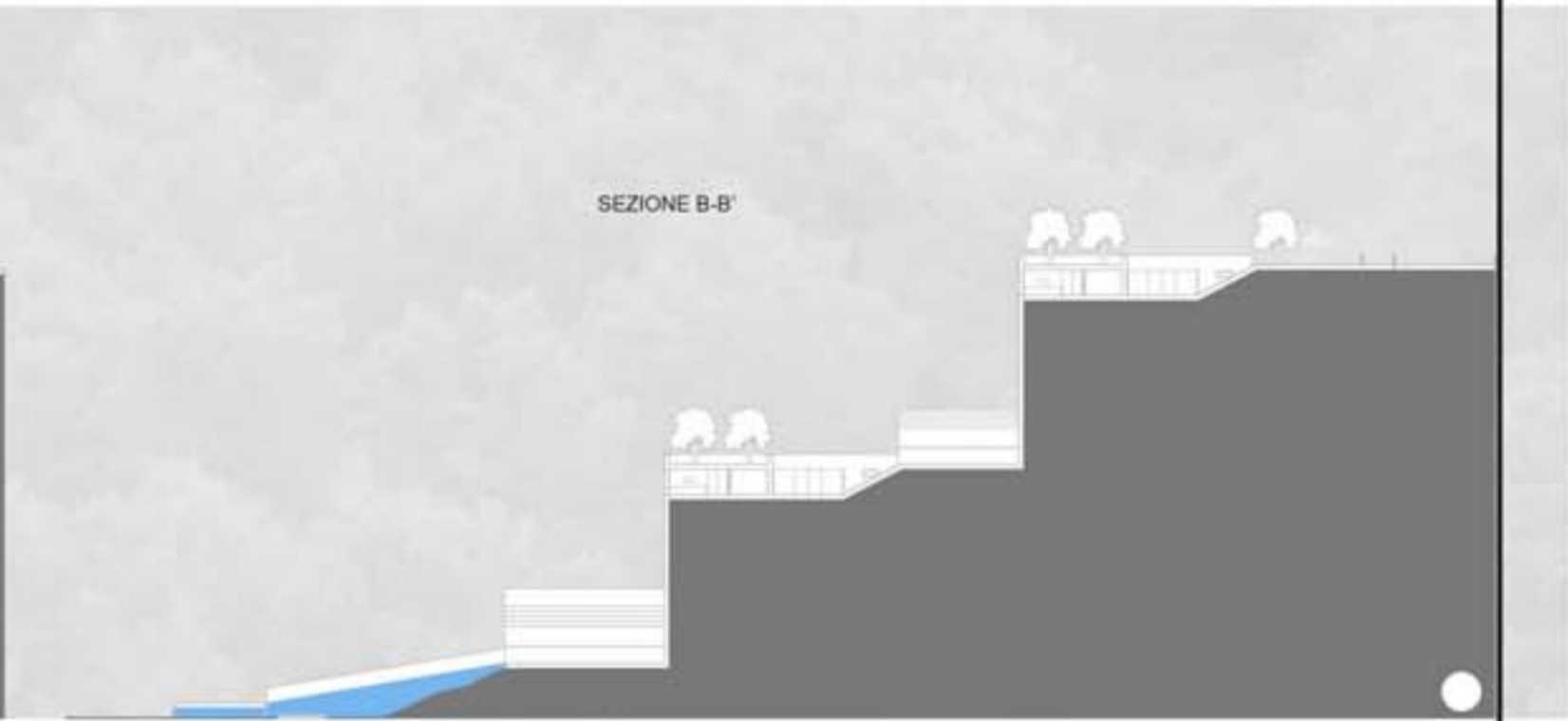
QUOTA 7



QUOTA 8



SEZIONE C-C' SCALA 1: 500



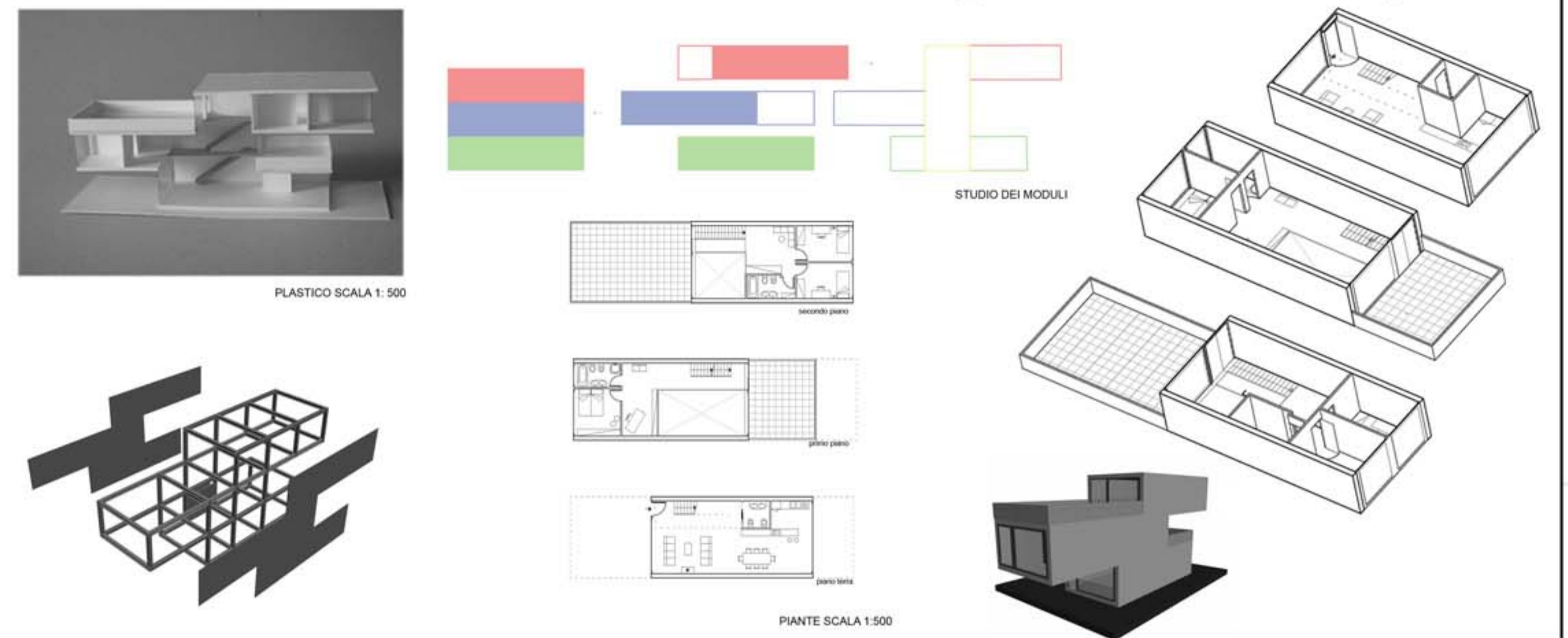
SEZIONE B-B'



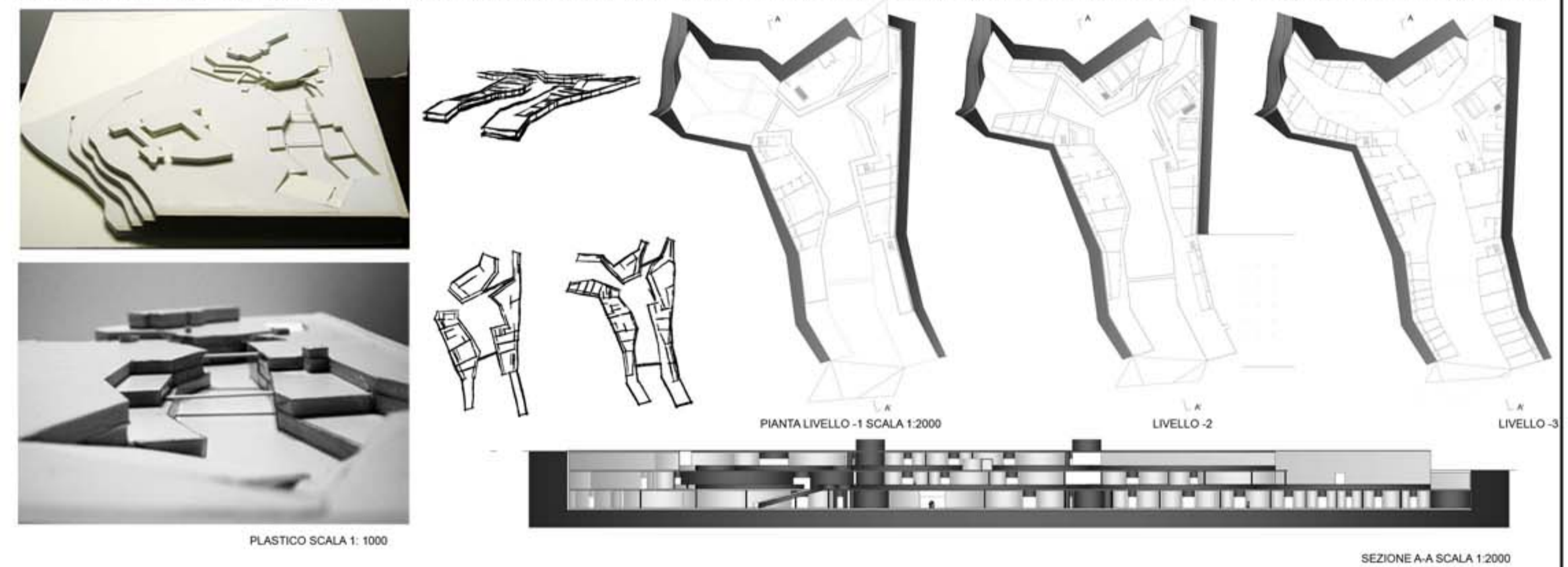
SEZIONE A-A' SCALA 1: 200



LABORATORIO DI FONDAMENTI DELLA PROGETTAZIONE A.A 2006/07: UNITA' ABITATIVE_AREA SGL CARBON ASCOLI PICENO_Prof. L. Coccia



LABORATORIO DI PROGETTAZIONE URBANA A.A 2007/2008: SPAZI COMMERCIALI_AREA SGL CARBON ASCOLI PICENO_Prof. M. D' Annuntiis



LABORATORIO DI PROGETTAZIONE DELL' ARCHITETTURA A.A 2008/2009: SPAZI PER IL TURISMO_PORTO SAN GIORGIO (FM)_ Prof. U. Cao

