

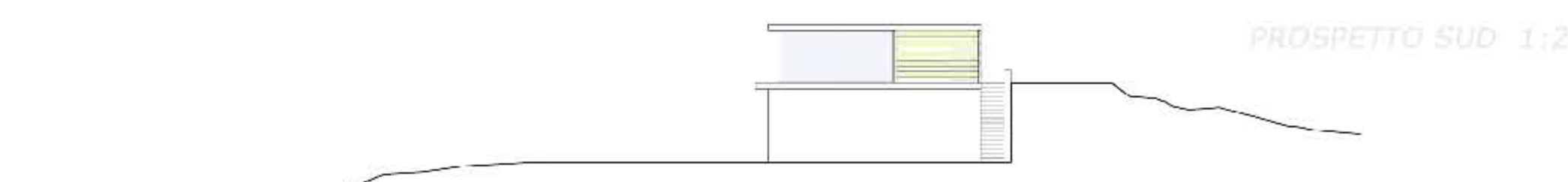
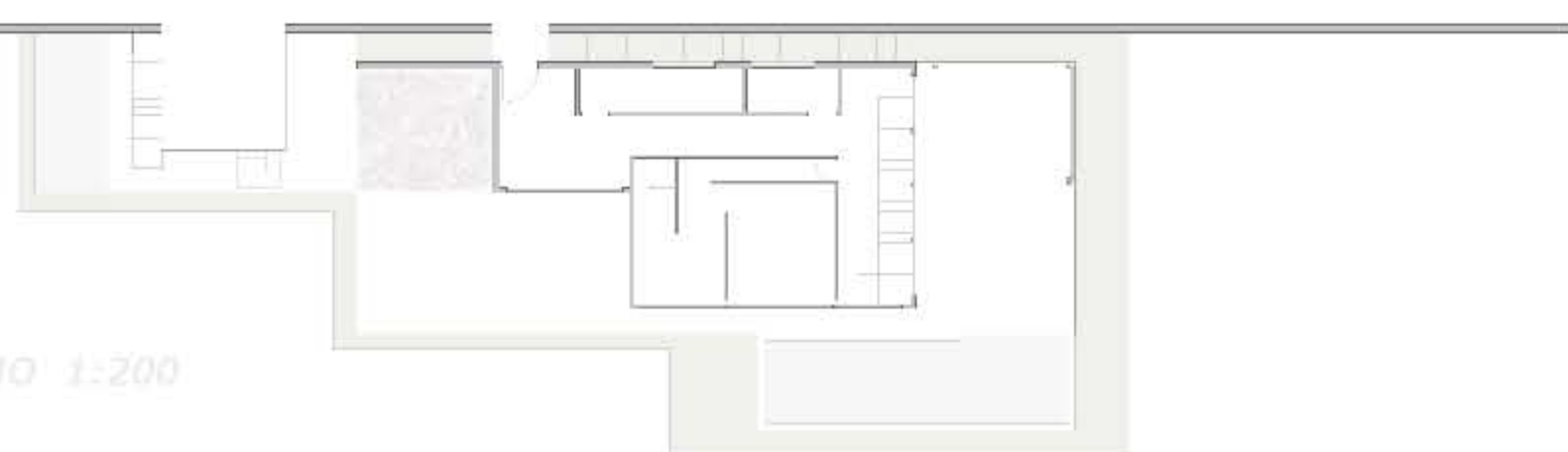
PROSPETTO EST 1:200

PIANTA PIANO SEMINTERRATO 1:200



PROSPETTO NORD 1:200

PIANTA PIANO TERRA 1:200

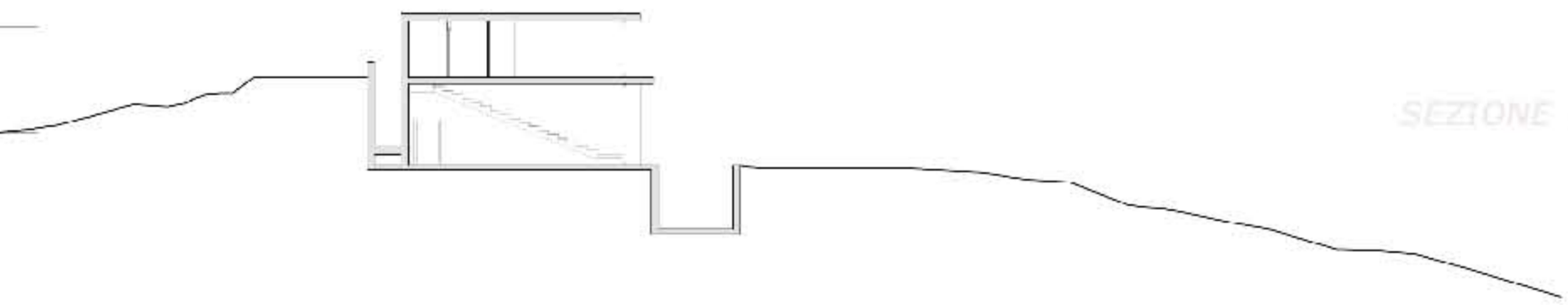


PROSPETTO SUD 1:200

PIANTA PIANO PRIMO 1:200

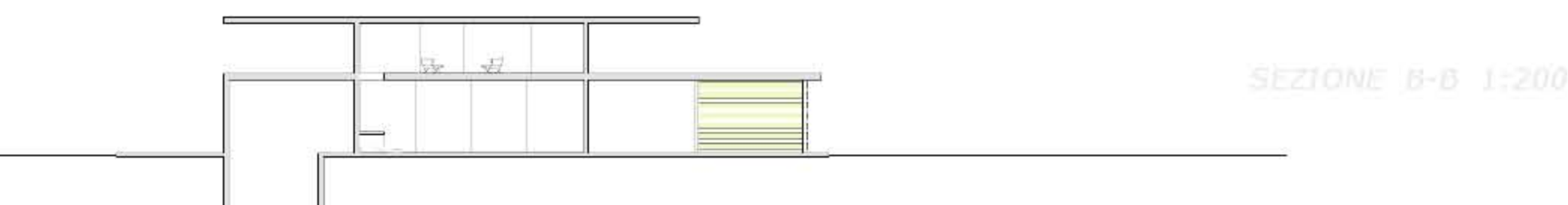


PROSPETTO OVEST 1:200

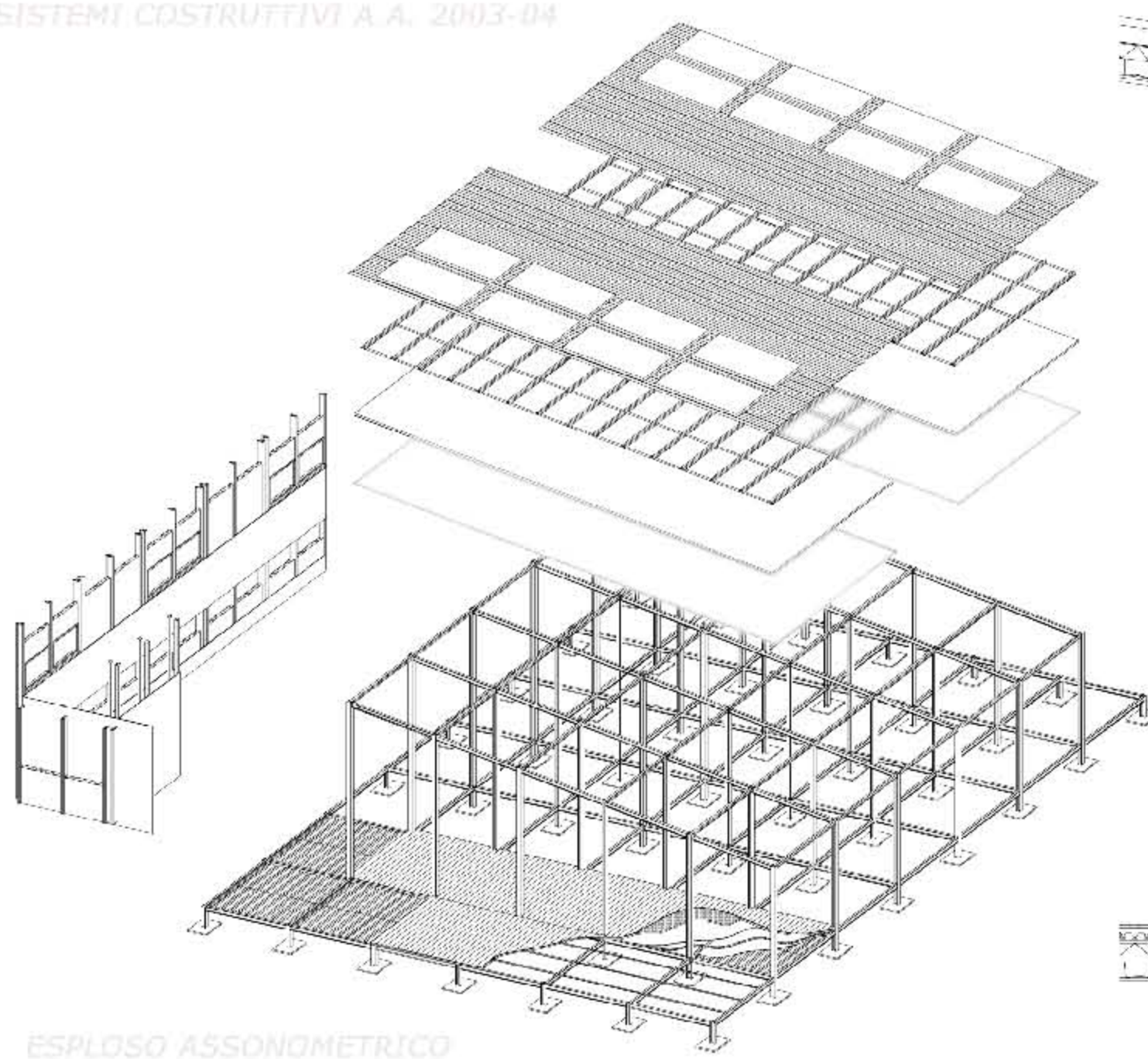
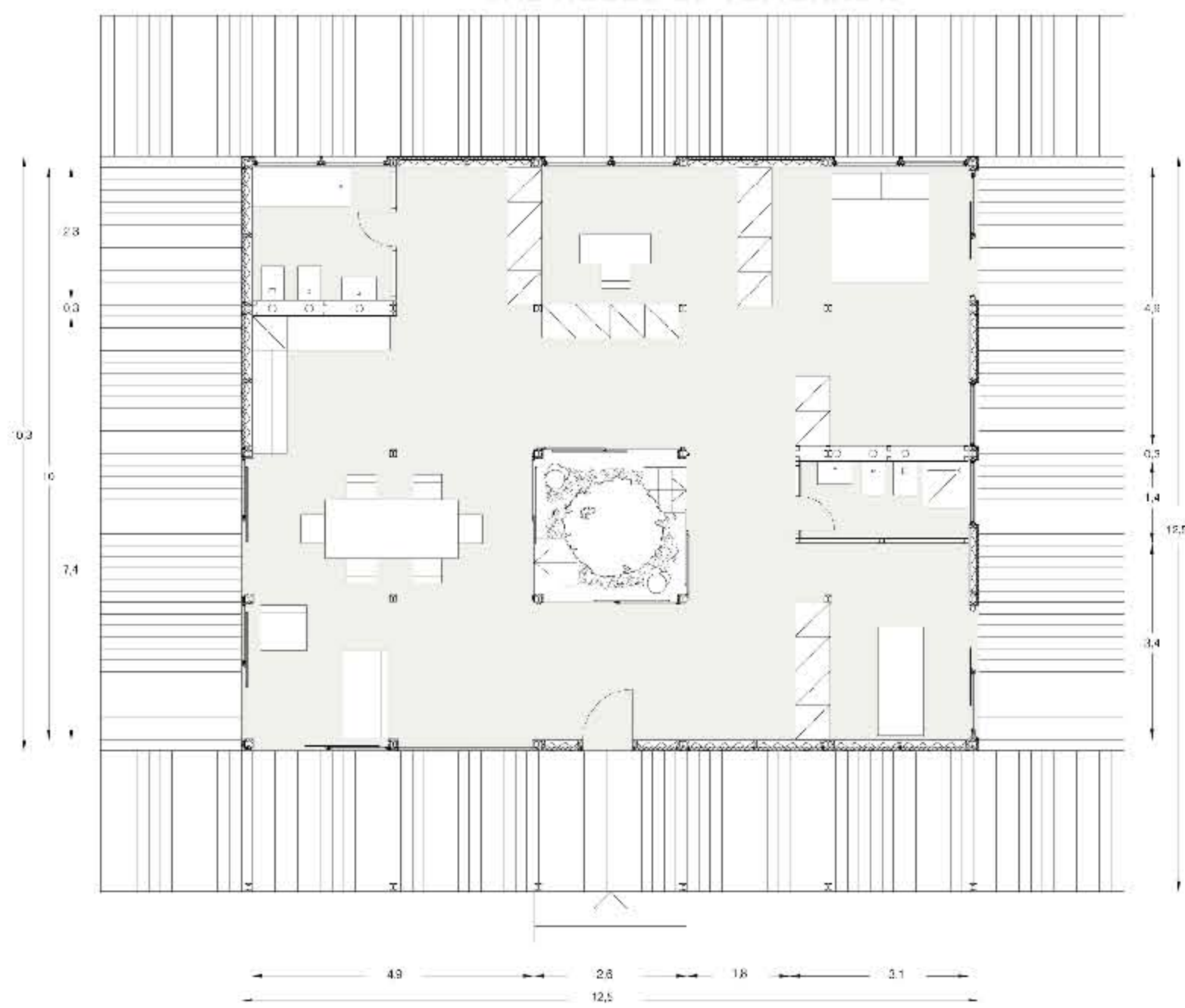


SEZIONE A-A 1:200

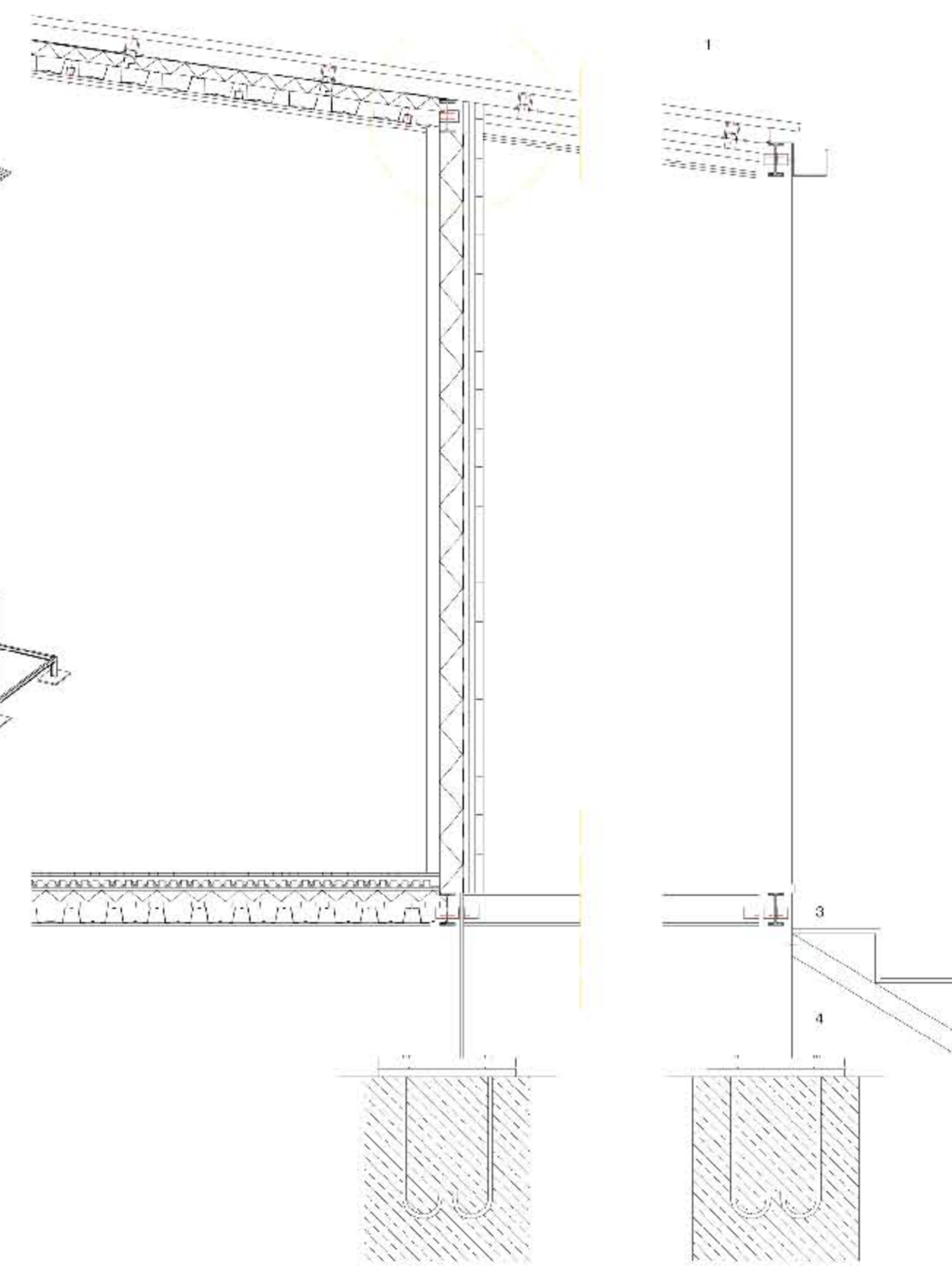
PIANTA COPERTURE 1:200



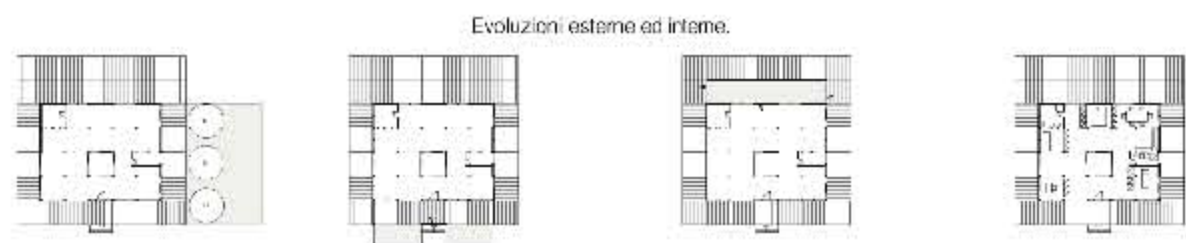
SEZIONE B-B 1:200



ESPLOSO ASSONOMETRICO



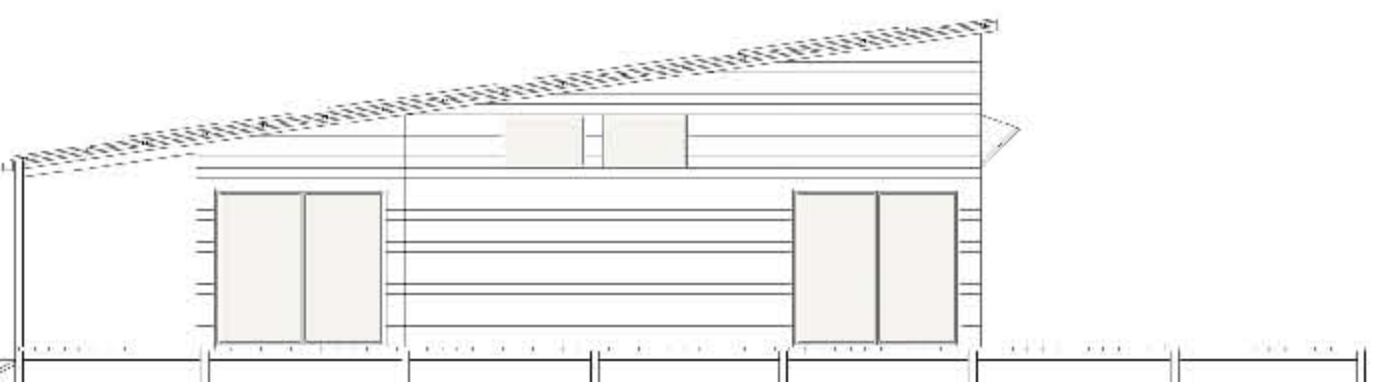
PARTICOLARE COSTRUTTIVO 1:20



Evoluzioni esterne ed interne.



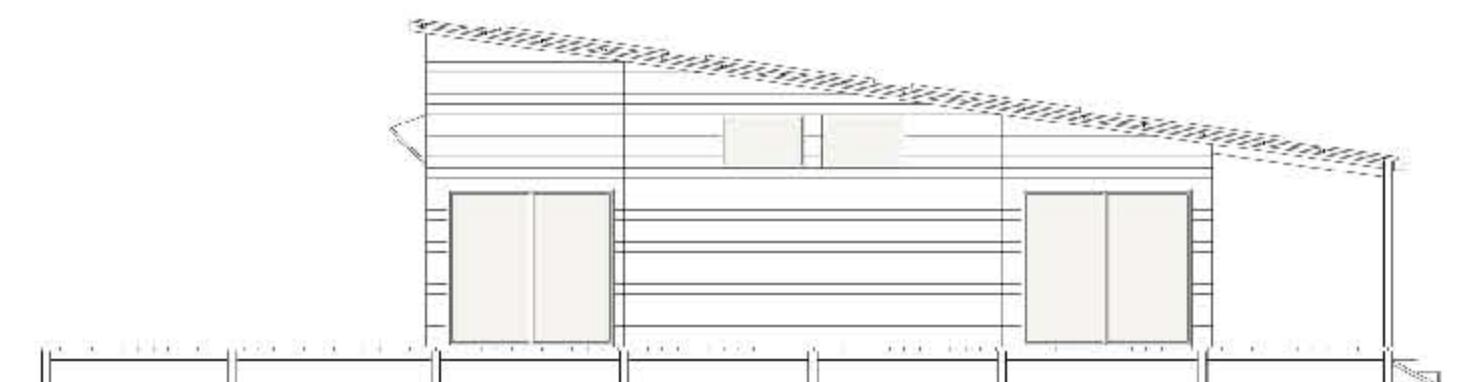
PROSPETTO EST 1:100



PROSPETTO SUD 1:200

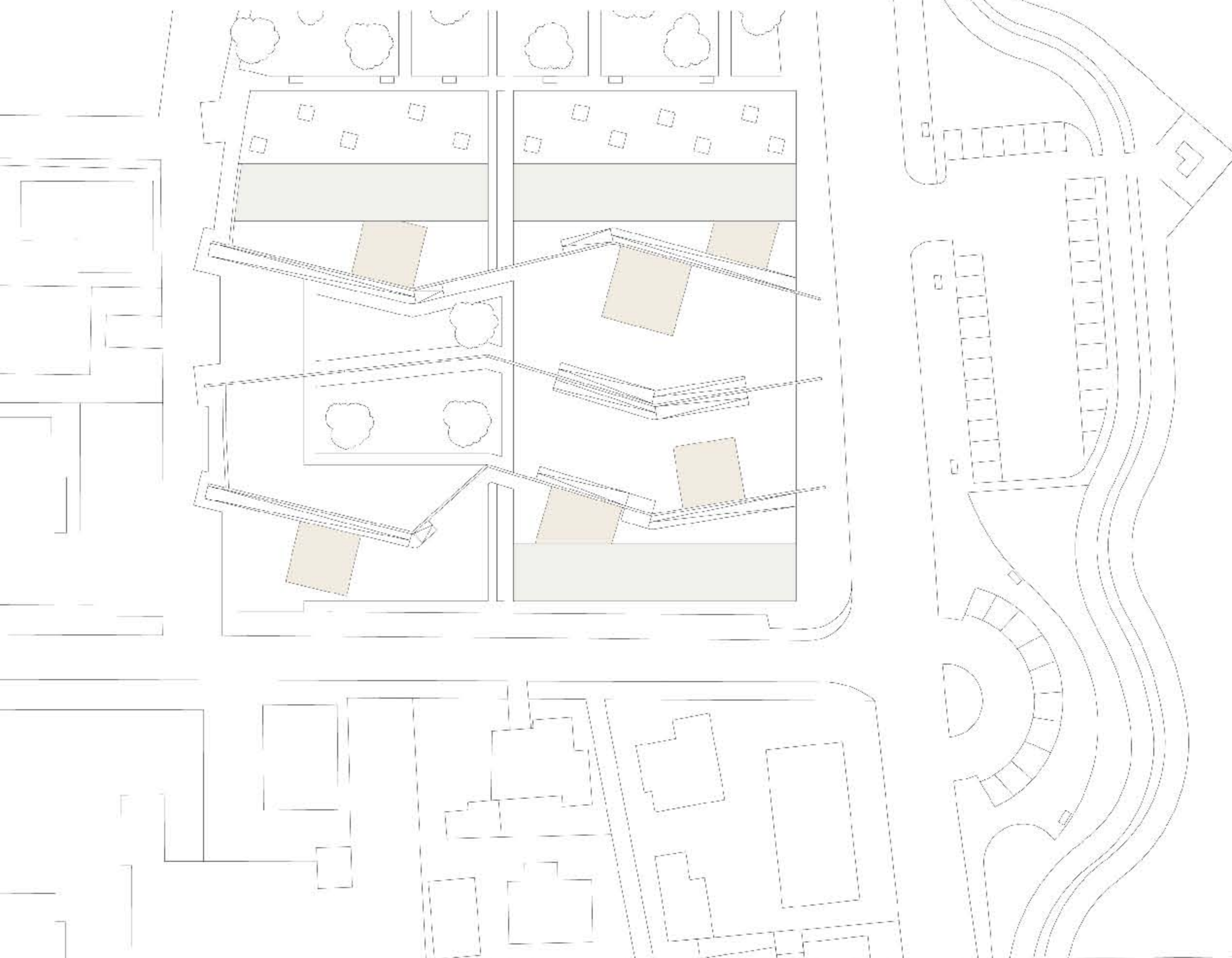


PROSPETTO OVEST 1:100

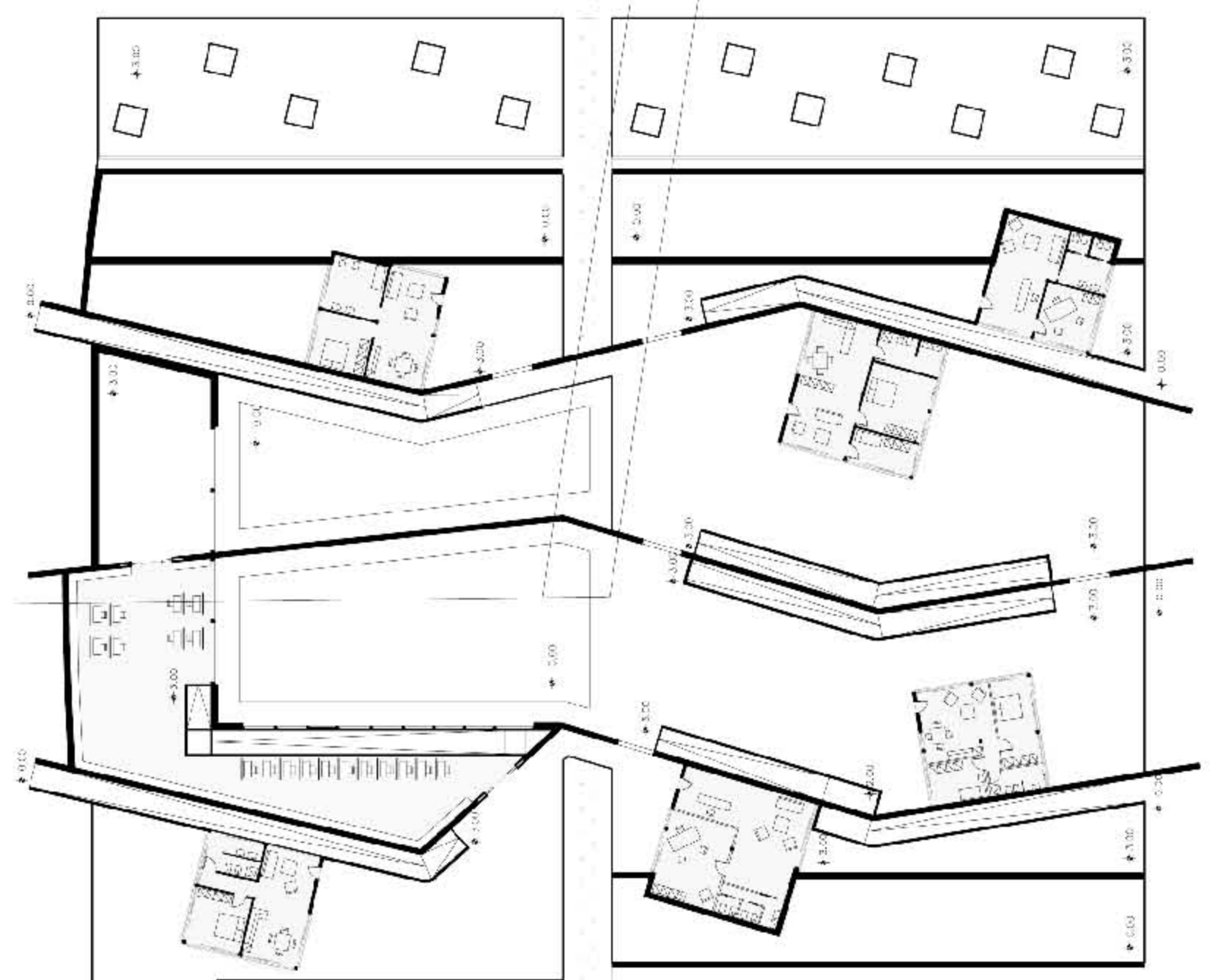


PROSPETTO NORD 1:100



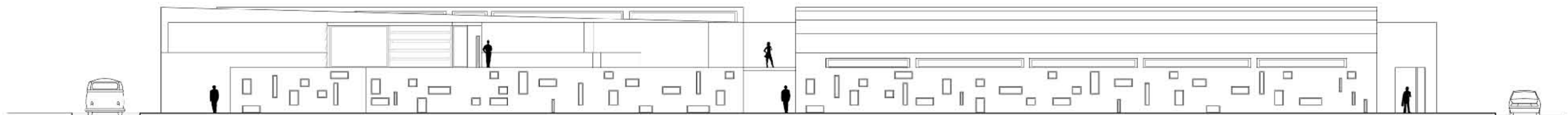


PIANTE PIANO TERRA 1:200

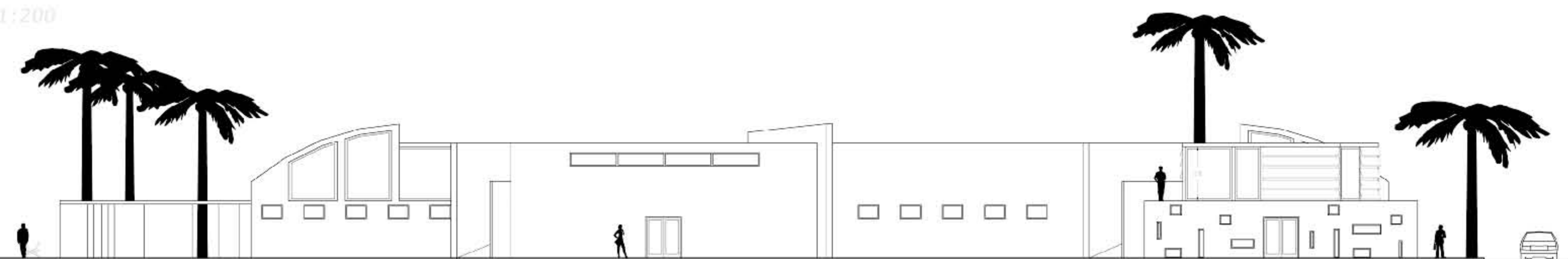


PIANTA PIANO PRIMO 1:200

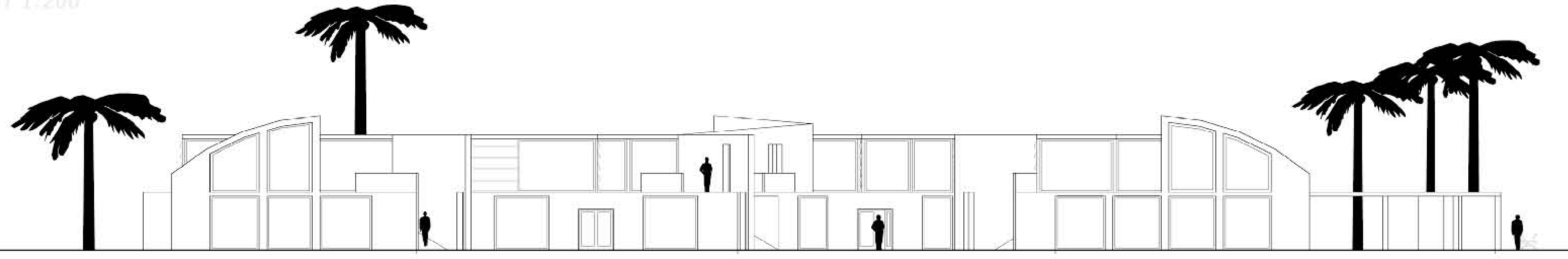
FOTO PLASTICO



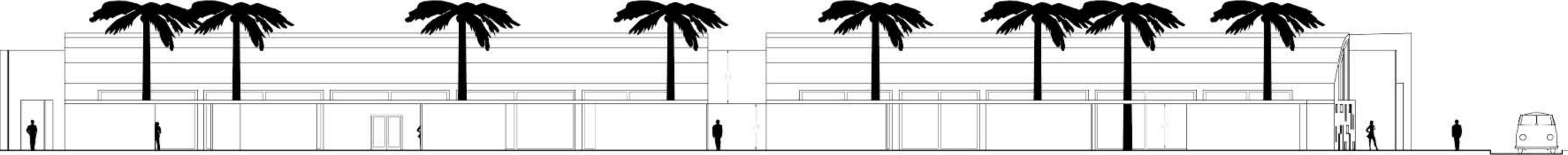
PROSPETTO SUD 1:200



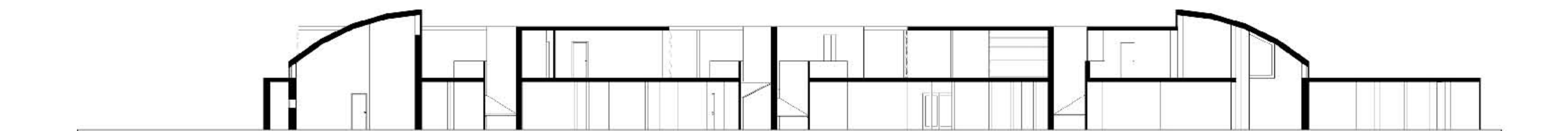
PROSPETTO OVEST 1:200



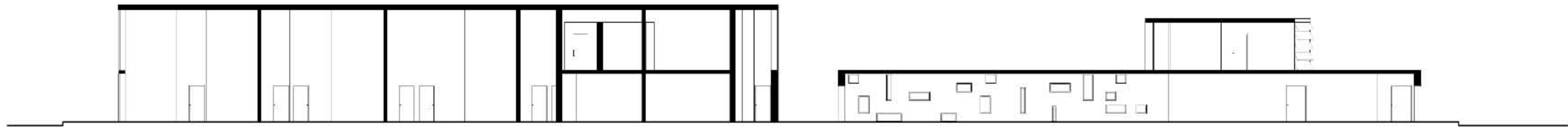
PROSPETTO EST 1:200



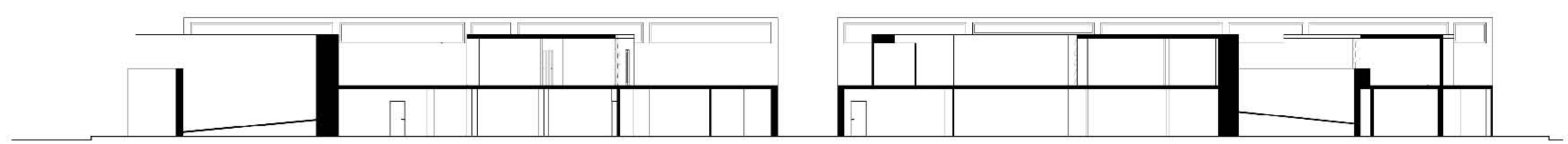
PROSPETTO NORD 1:200



SEZIONE A-A 1:200



SEZIONE B-B 1:200

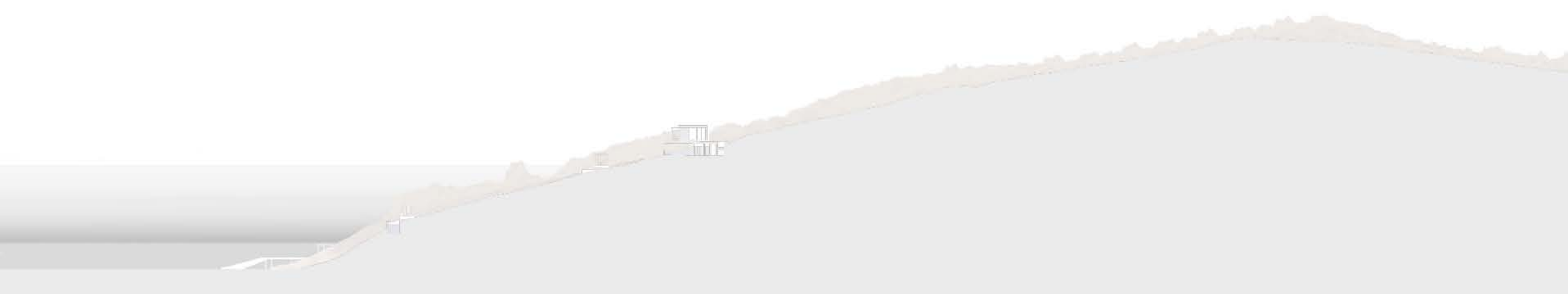


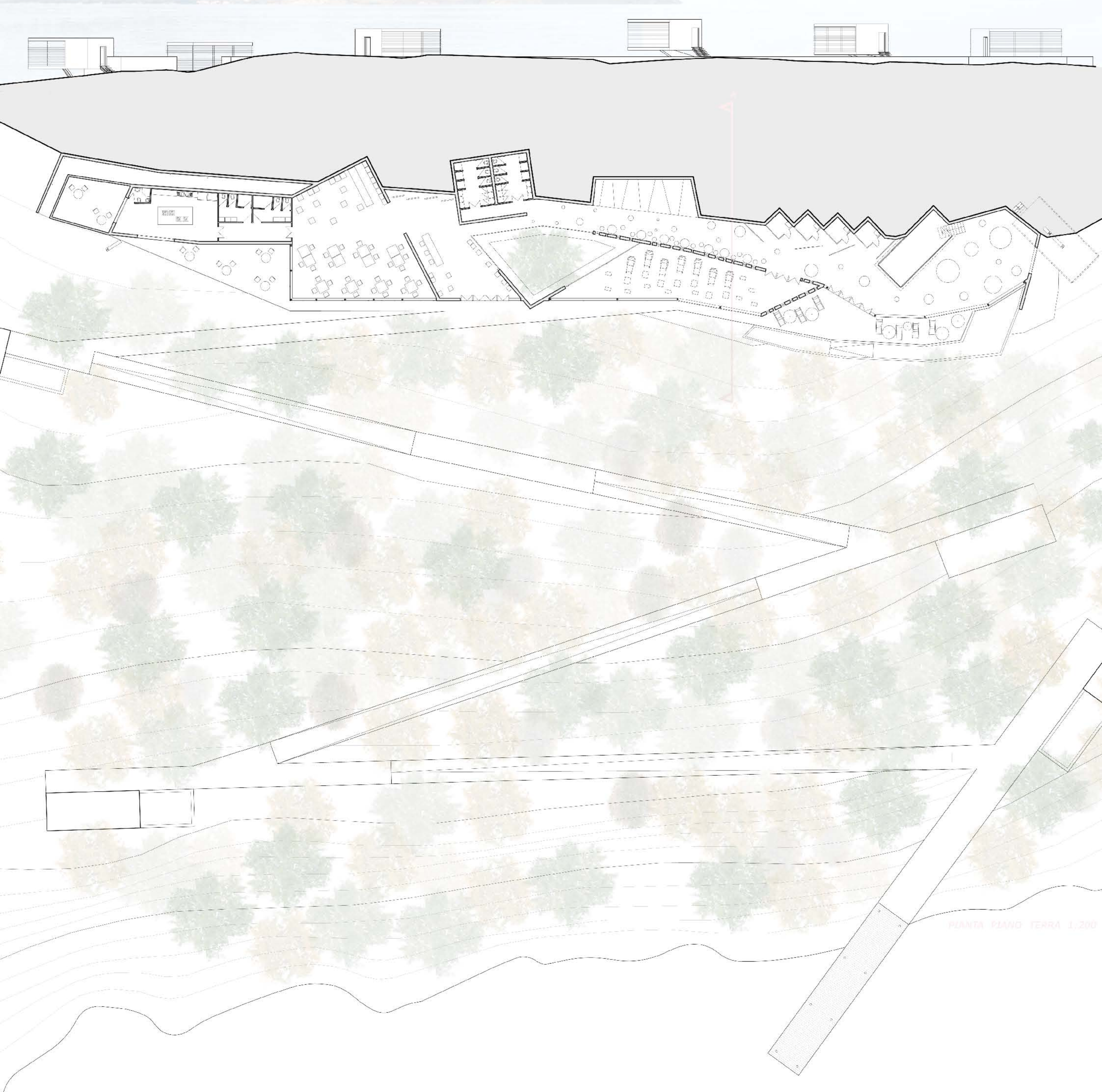
SEZIONE C-C 1:200



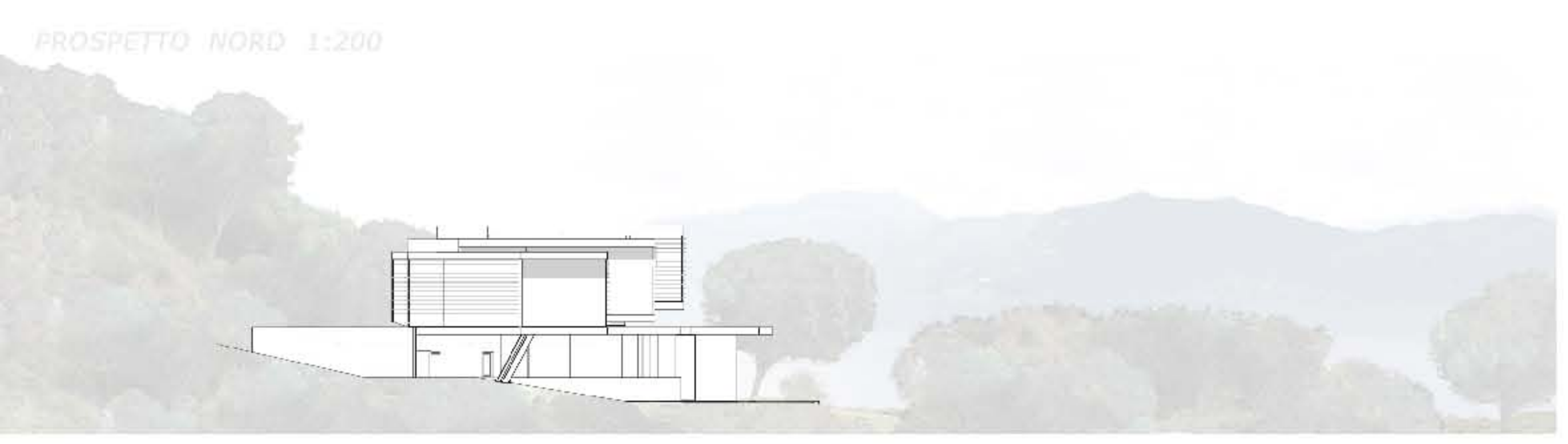
RENDERING

SEZIONE TERRITORIALE

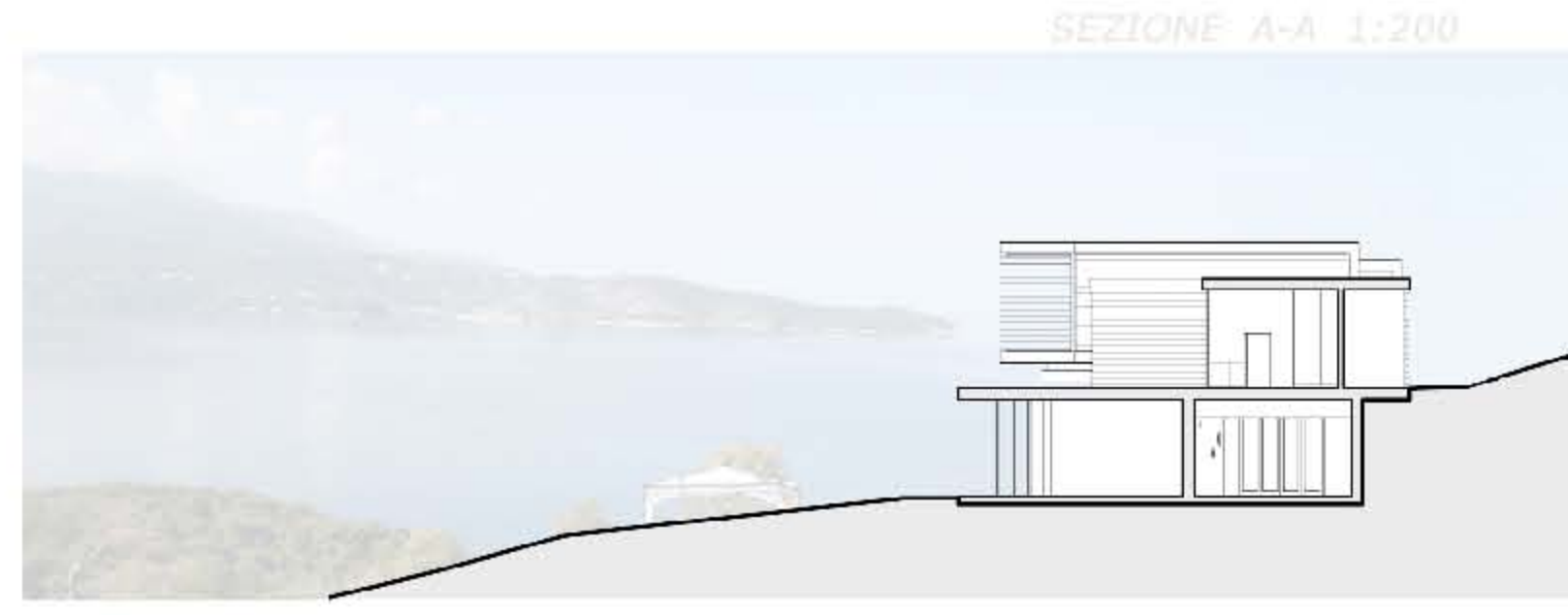




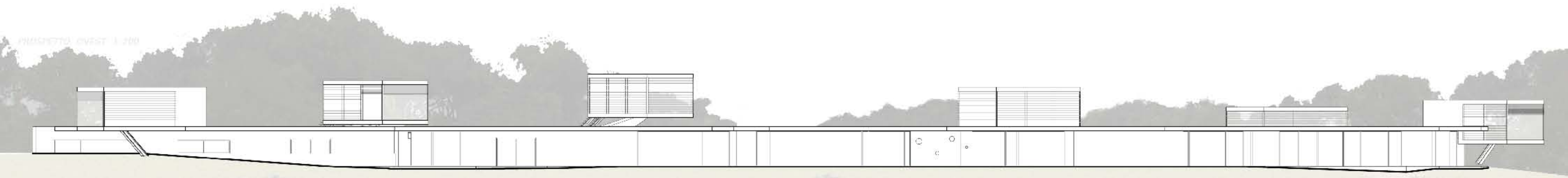
PIANTA PIANO TERRA 1:200



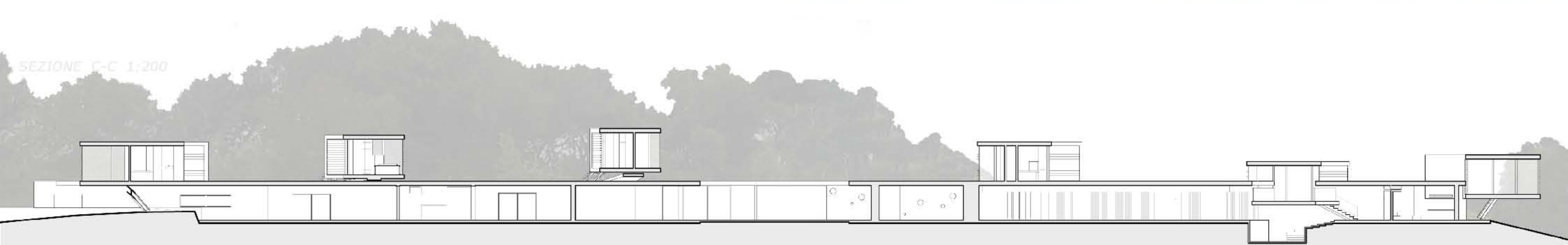
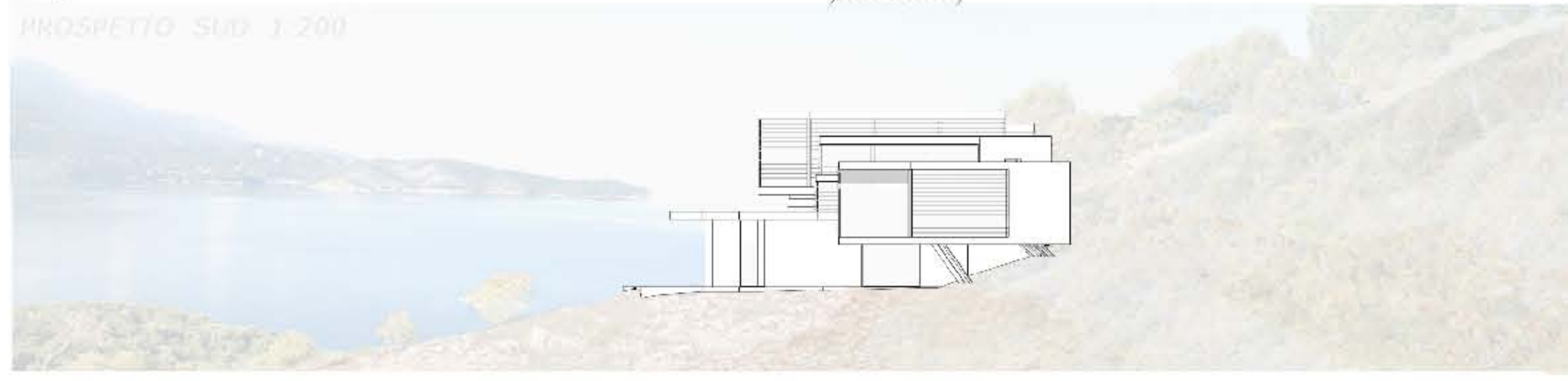
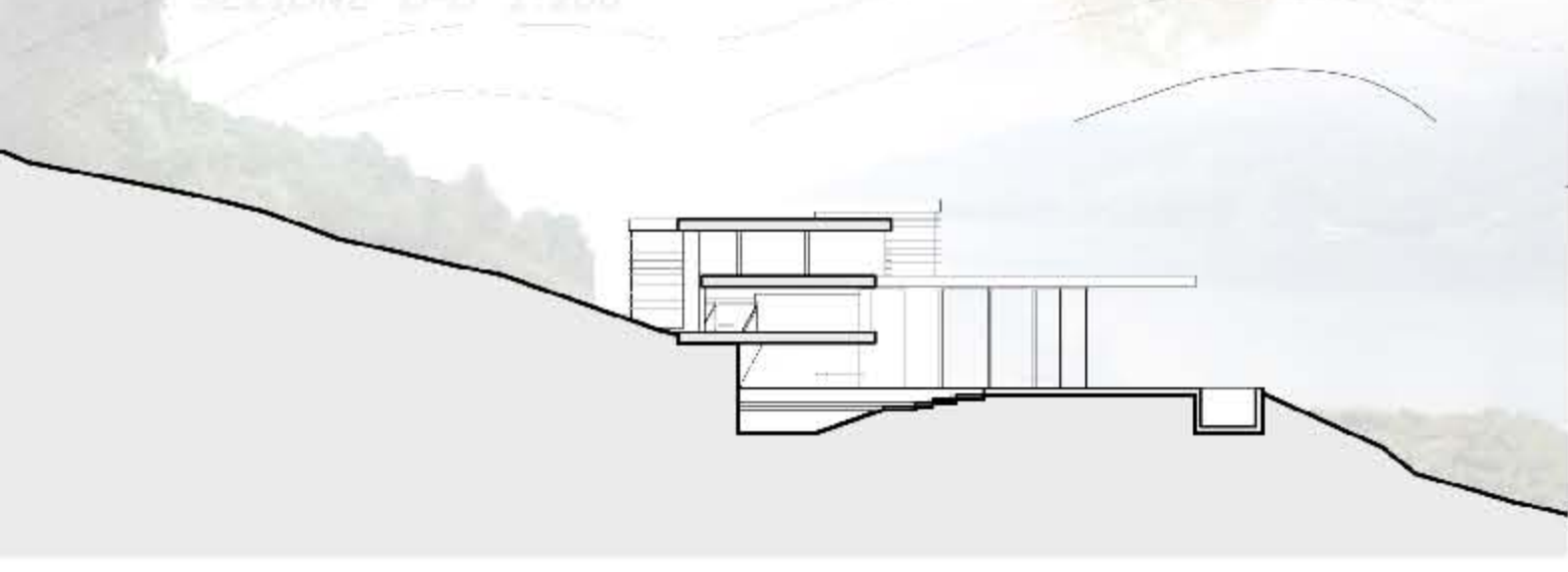
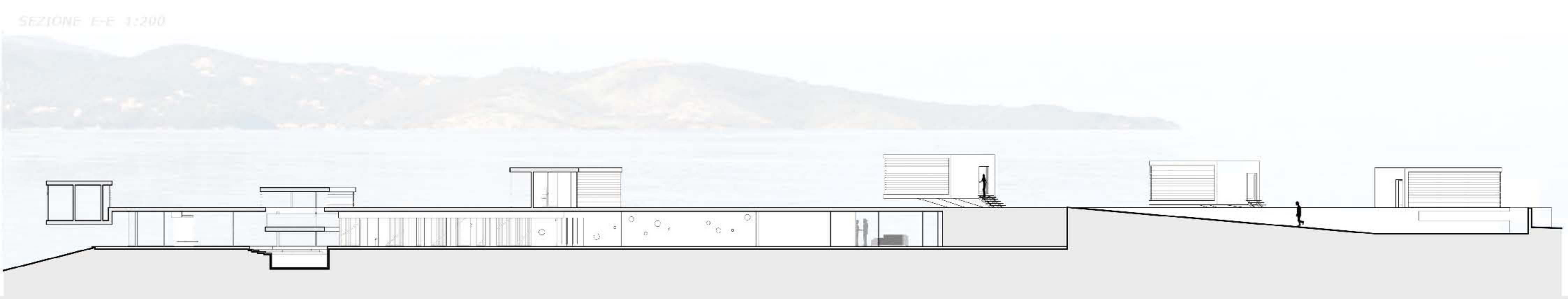
PROSPETTO NORD 1:200

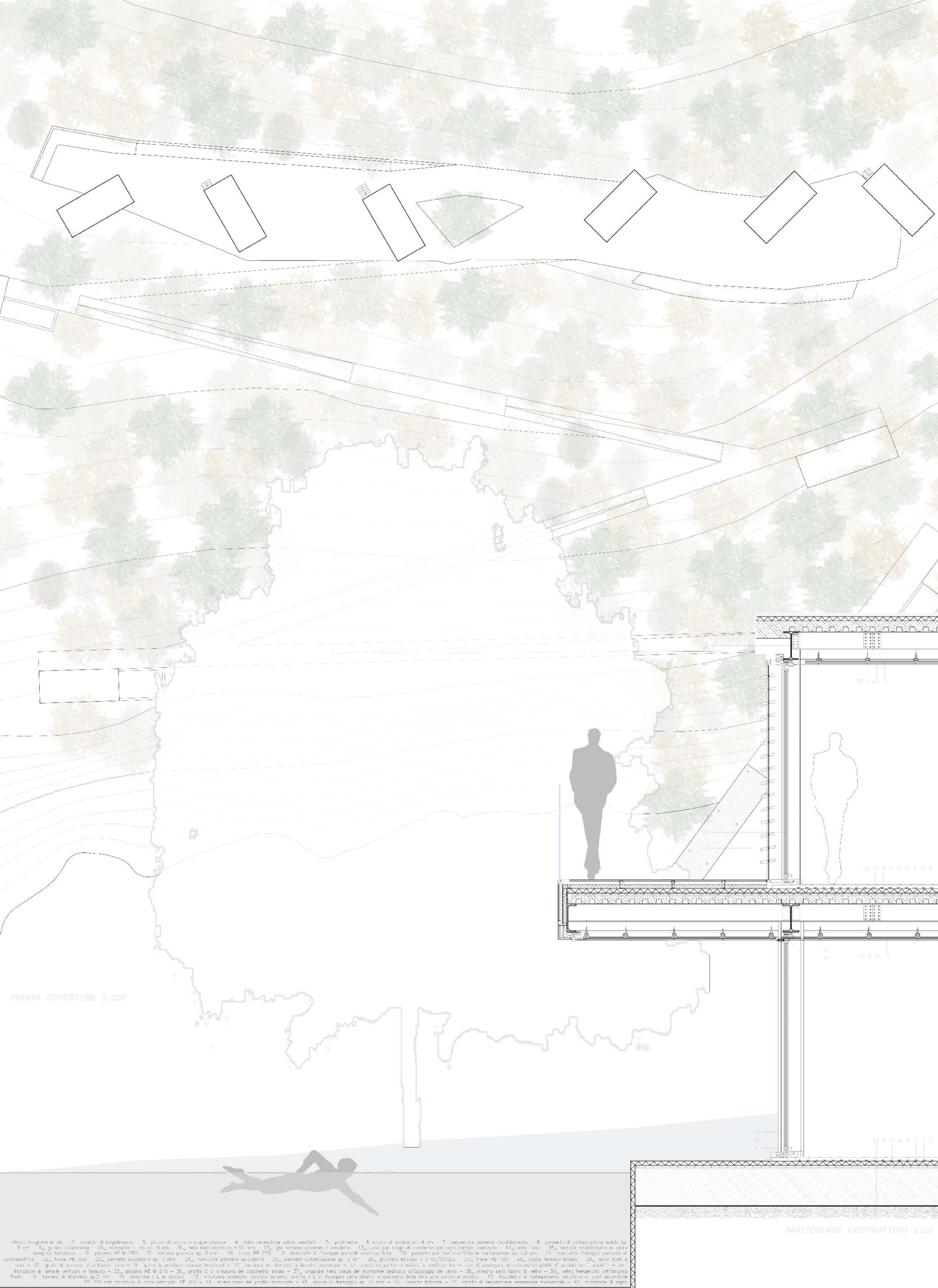


SEZIONE A-A 1:200



PROSPETTO EST 1:200





PIANTA COPERTURE 1:200

PARTICOLARE COSTRUTTIVO 1:20

- 1_ strati in legno in c/c
- 2_ cassetto di irrigidimento
- 3_ pezzo di tavola di cuoio piovone
- 4_ tubo cerniera sedile ventilato
- 5_ pavimento
- 6_ x-timber di legno sp. 4 cm
- 7_ separatore sistema "swalder-velo"
- 8_ pannelli di coibentazione isolati sp. 5 cm
- 9_ pannello in c/c
- 10_ massello in c/c sp. 8 cm
- 11_ rete nell'ordito a 10 cm
- 12_ gli sistemi pavimenti ventilati
- 13_ tubo per sfogo di condensa per ogni campo isolato
- 14_ ante "exo"
- 15_ vetrata cristallina in vetro
- 16_ pannello in c/c
- 17_ lamiera spaziale sp. 2 mm
- 18_ trave FF 220
- 19_ braccioli di "usaggio" pannelli coibentati
- 20_ pannelli per car. scottolio in calcestruzzo sp. 1,5 cm
- 21_ murante fidecage pannelli di coibentazione
- 22_ trave PE 500
- 23_ pannello alucobond sp. 3 mm
- 24_ murante pannello alucobond
- 25_ pannello coibentazione sp. 3 cm
- 26_ profilo esalco di U 60/55/23
- 27_ trave PE 700
- 28_ ponte termico in legno
- 29_ vetro float a 12 mm
- 30_ griglia di acciaio / in ferro
- 31_ pannello periferico in ferro
- 32_ sistema periferico in ferro
- 33_ sistema periferico in ferro
- 34_ sistema periferico in ferro
- 35_ pannello HE W 2/0
- 36_ profilo C di chiusura del pacchetto soleggiato
- 37_ anghiera metallica di sostegno del pacchetto del vetro
- 38_ ringiera del lavoro di vetro
- 39_ vetro temperato antiriflesso
- 40_ lamiera di alluminio sp. 3 mm
- 41_ griglia in L in acciaio
- 42_ struttura sostegno "acciaio" esterno: profilo L di fissaggio della plastica o sostegno della struttura portante vetro
- 43_ fessure di collegamento struttura di col. secondarie
- 44_ struttura di col. principale FF 400
- 45_ incastratura del profilo montante
- 46_ profilo di drenaggio sp. 14 mm
- 47_ cassetto filtrante
- 48_ rete di separazione aerazione trasversale
- 49_ costante di legno