



Scala 1:2000

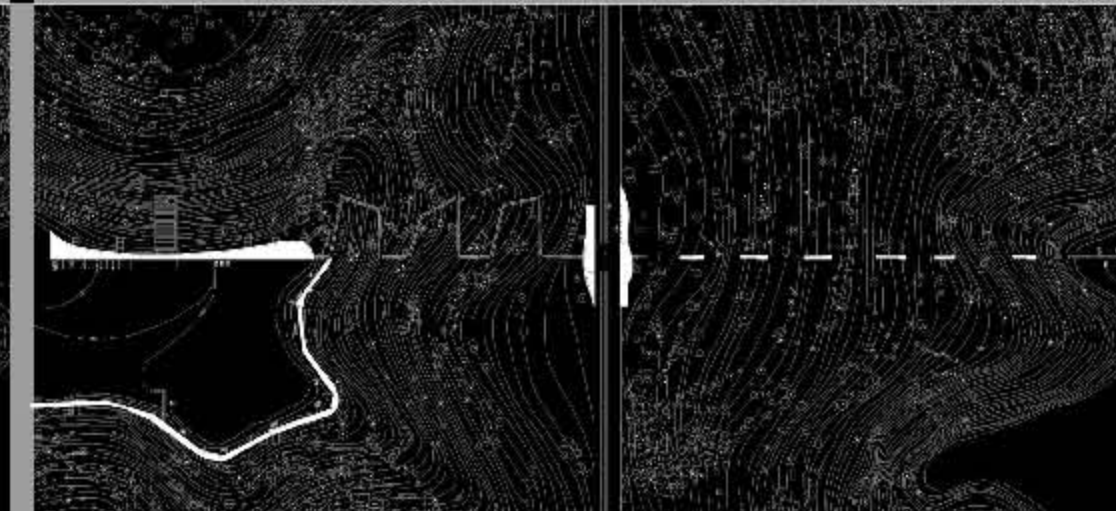
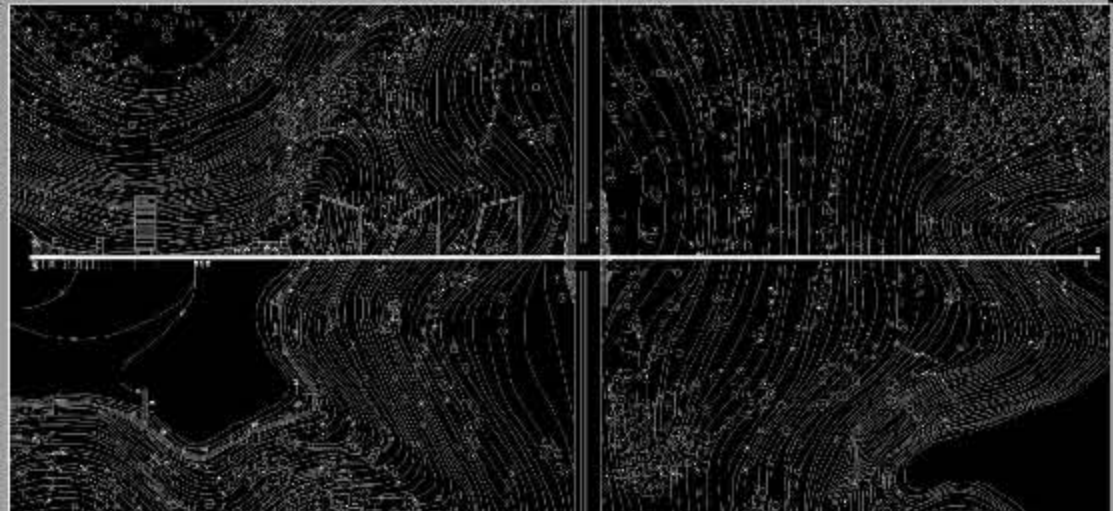
COLLEGARE

PERCORRERE

SOSTARE

SERVIRE

Scala 1:2000



Le due baie di diverso carattere morfologico e antropico sono "virtualmente" collegate nel punto in cui il territorio si restringe naturalmente e le avvicina.

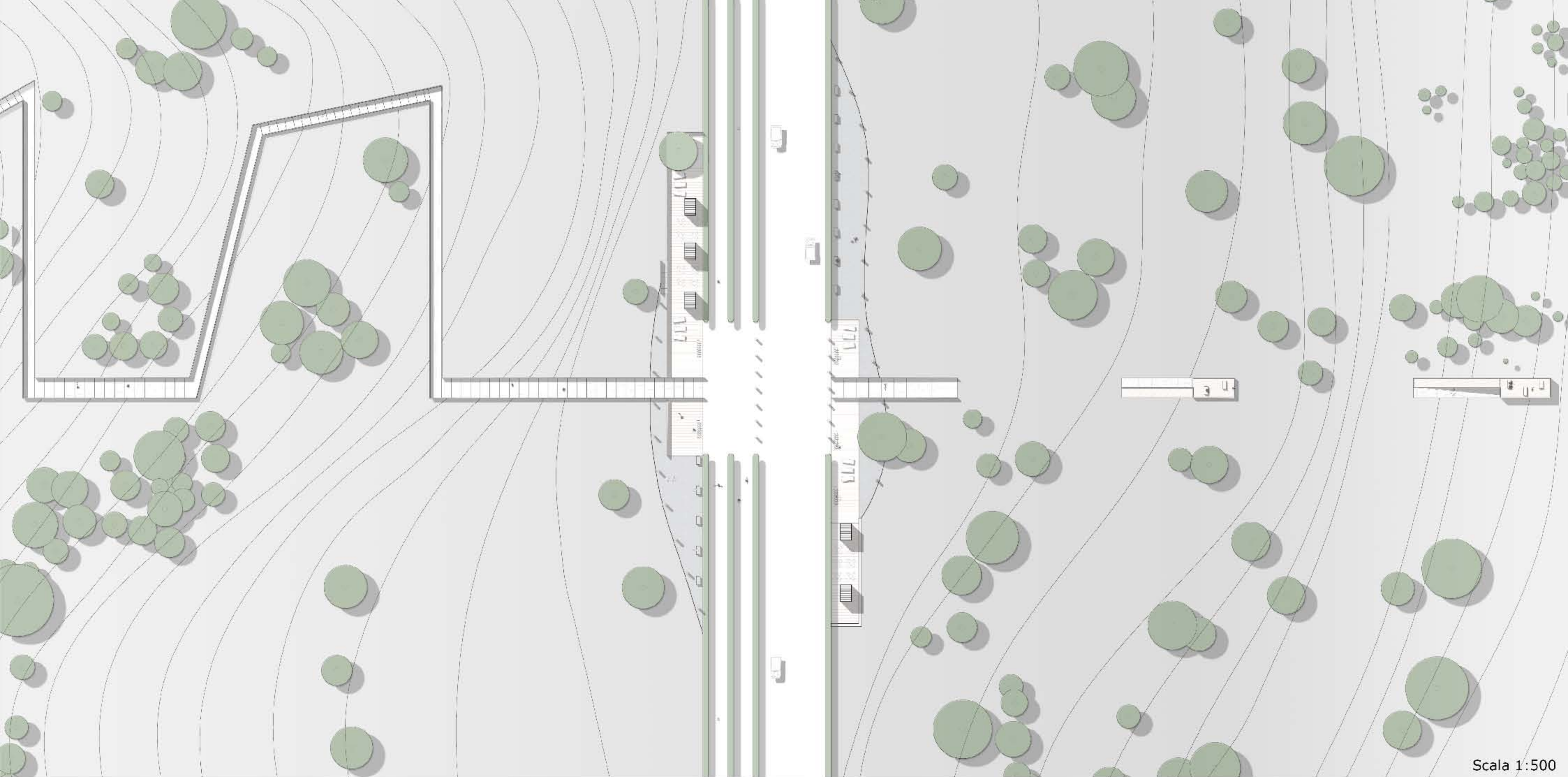
Il collegamento viene tradotto in un percorso pedonale che nel versante artificiale si snoda scendendo secondo la conformazione del terreno, mentre nell'altro versante lascia maggiore spazio alla natura.

Per assaporare totalmente l'impervia natura del luogo vengono a crearsi numerosi spazi di sosta, sia piccoli e immersi nella natura, sia ampi per ricordare al meglio i diversi andamenti dei percorsi.

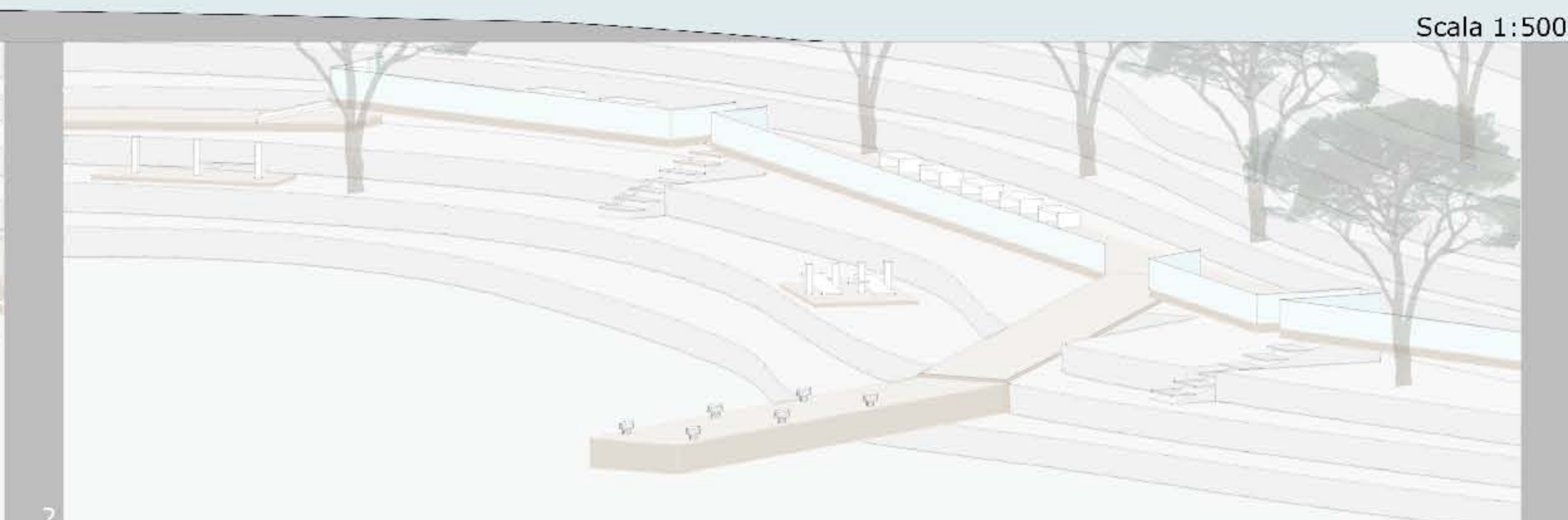
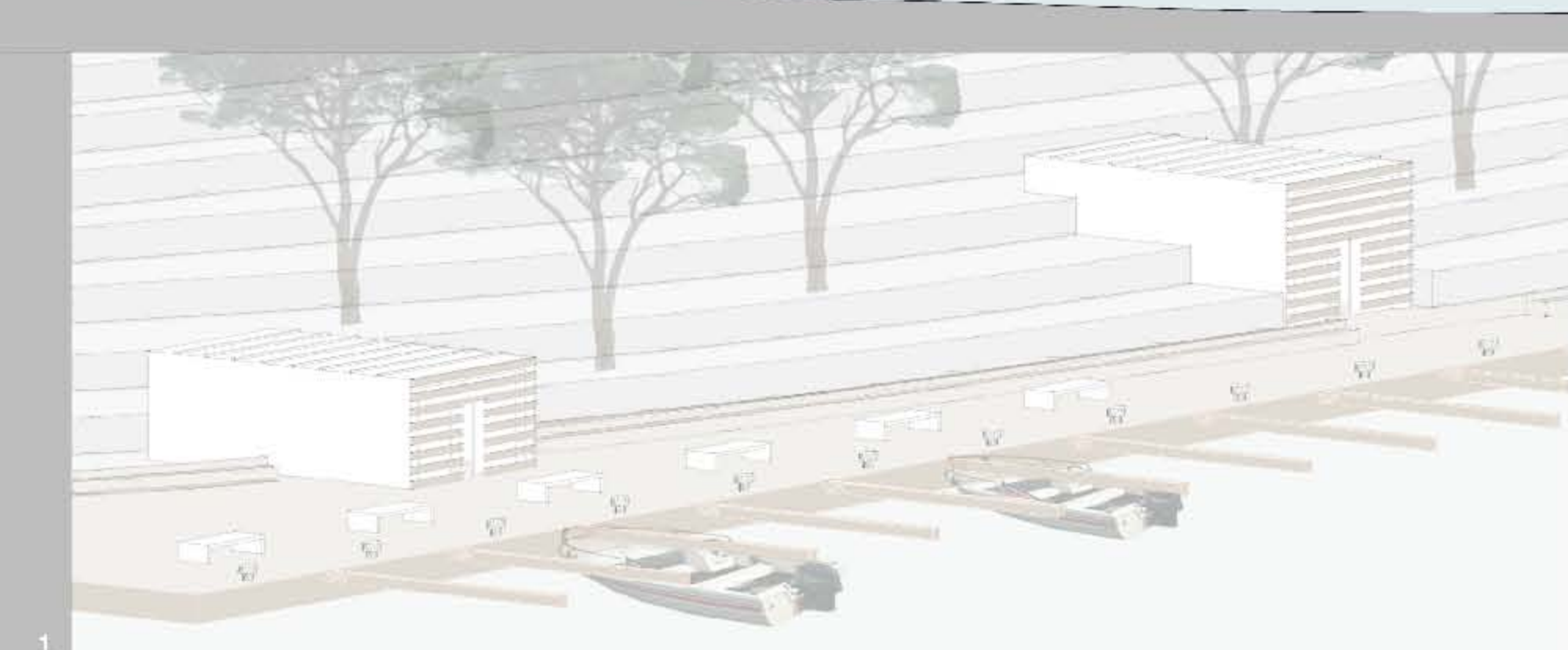
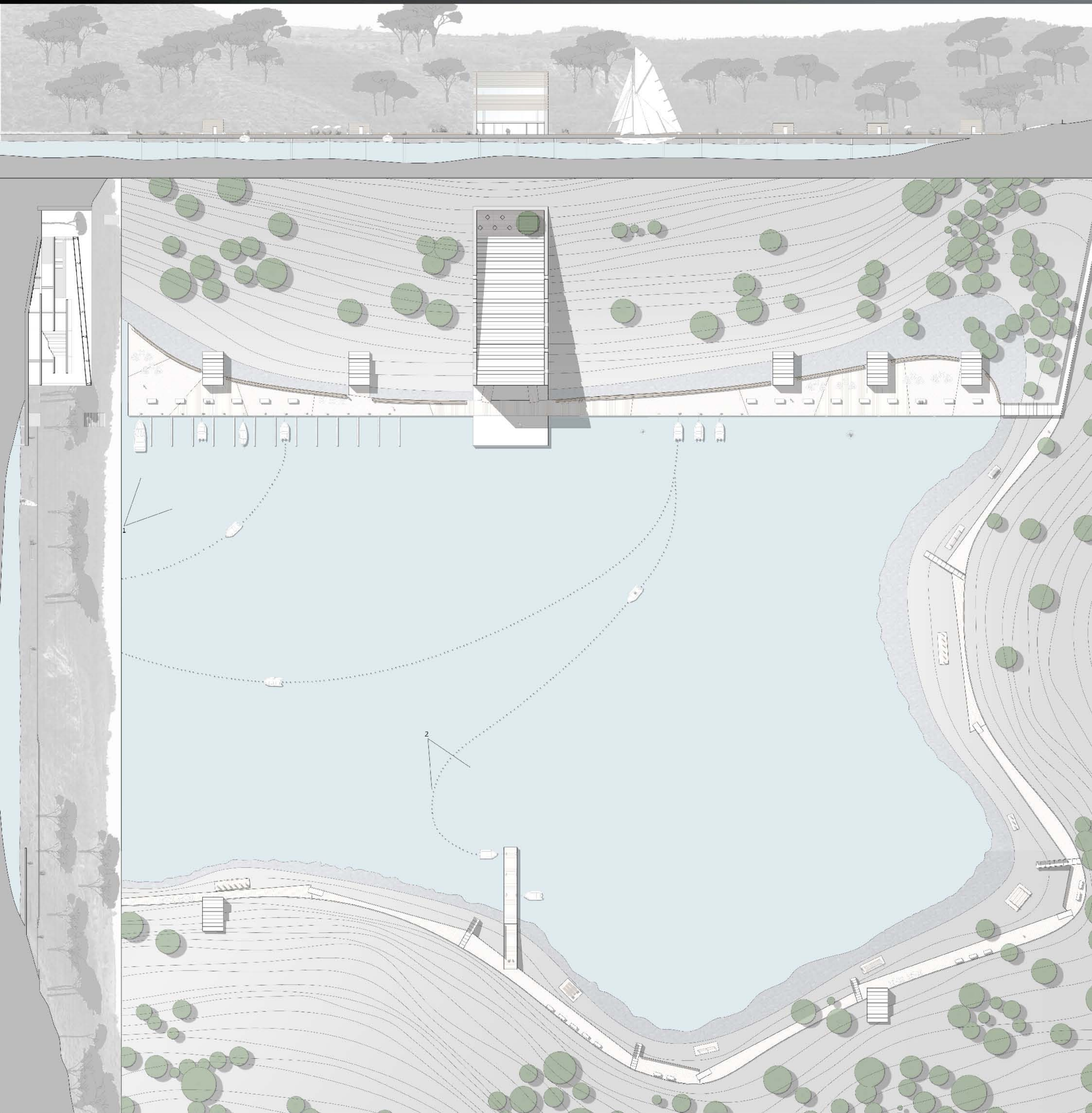
Nella zona dell'area di sosta e di raccordo e nella zona della baia maggiormente artificializzata vengono a concentrarsi alcuni edifici adibiti a principalmente a servizi per i turisti. Troviamo infatti bar, servizi di rifornimento per le imbarcazioni, servizi di informazione turistica, bagni e docce pubbliche per i bagnanti e un negozio di souvenir che illustra le principali attrazioni del luogo.



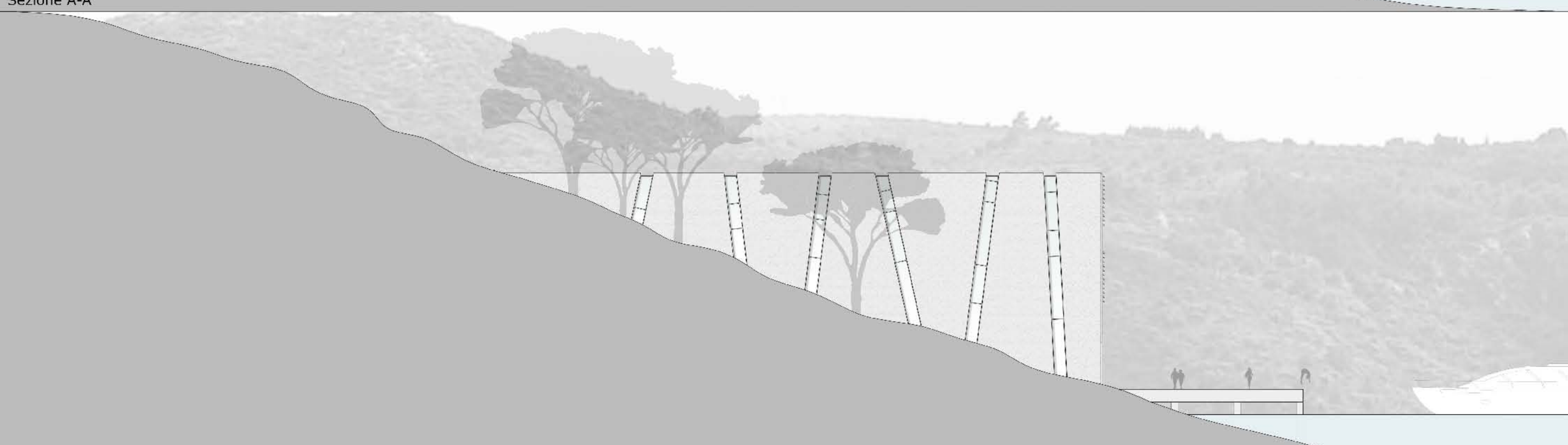
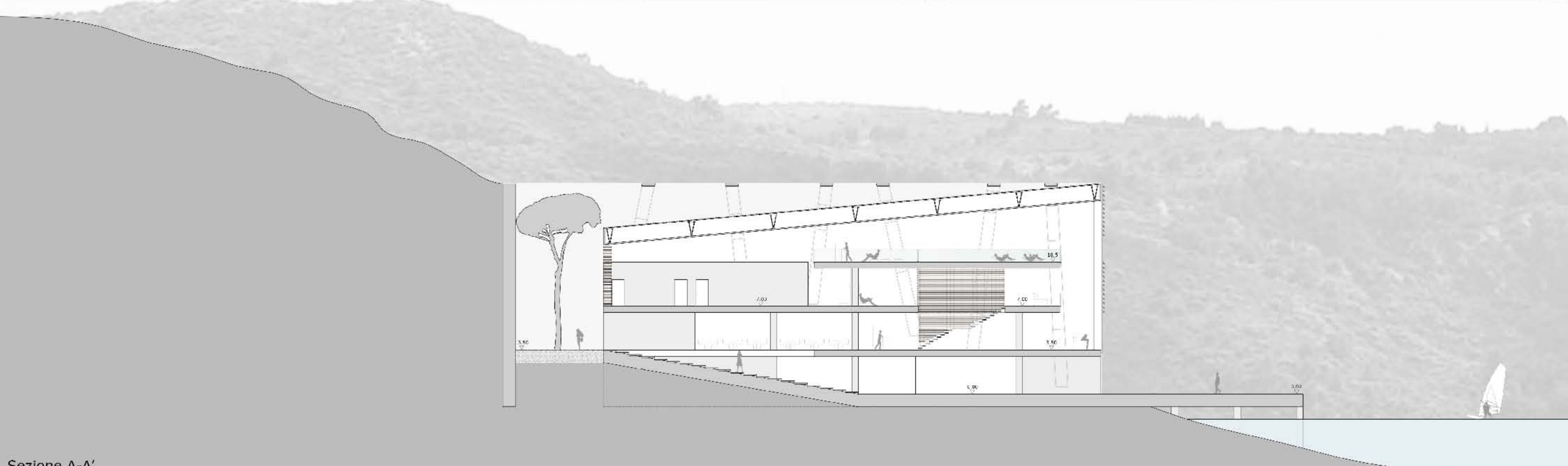
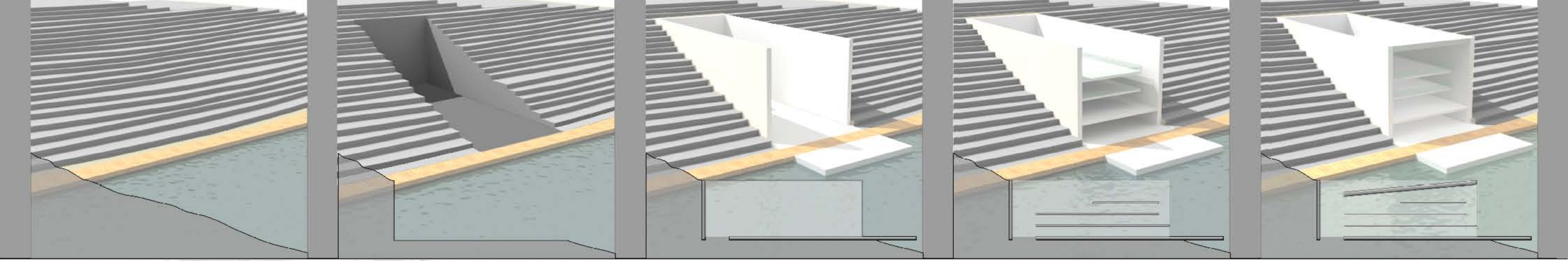
Scala 1:500

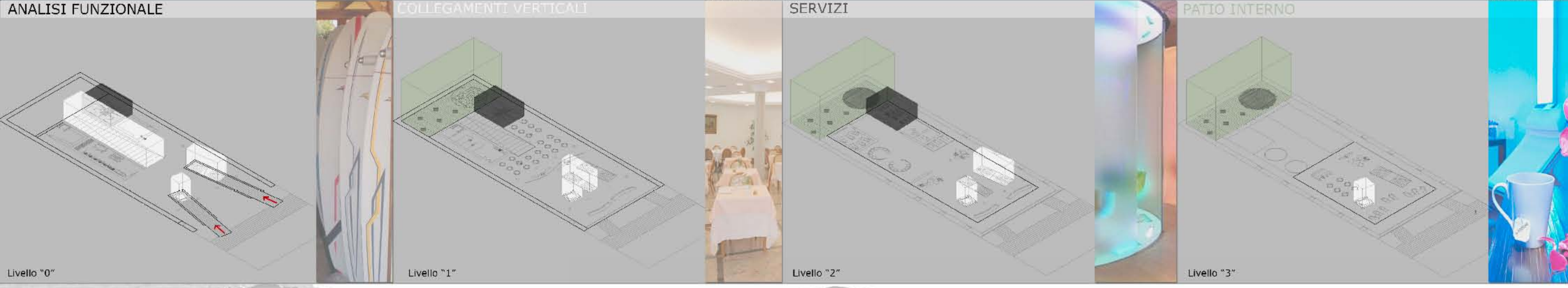
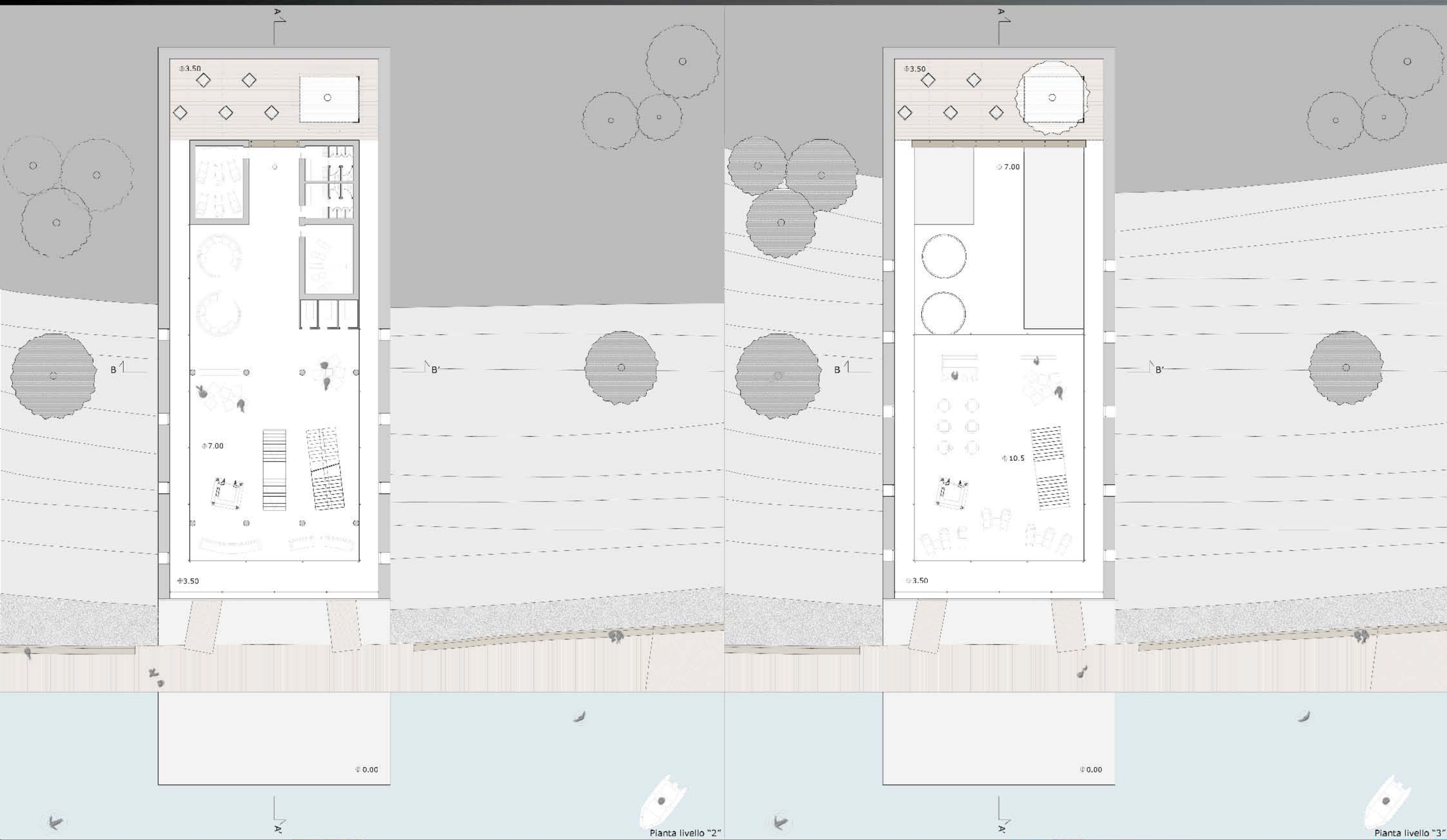


Scala 1:500



Scala 1:500







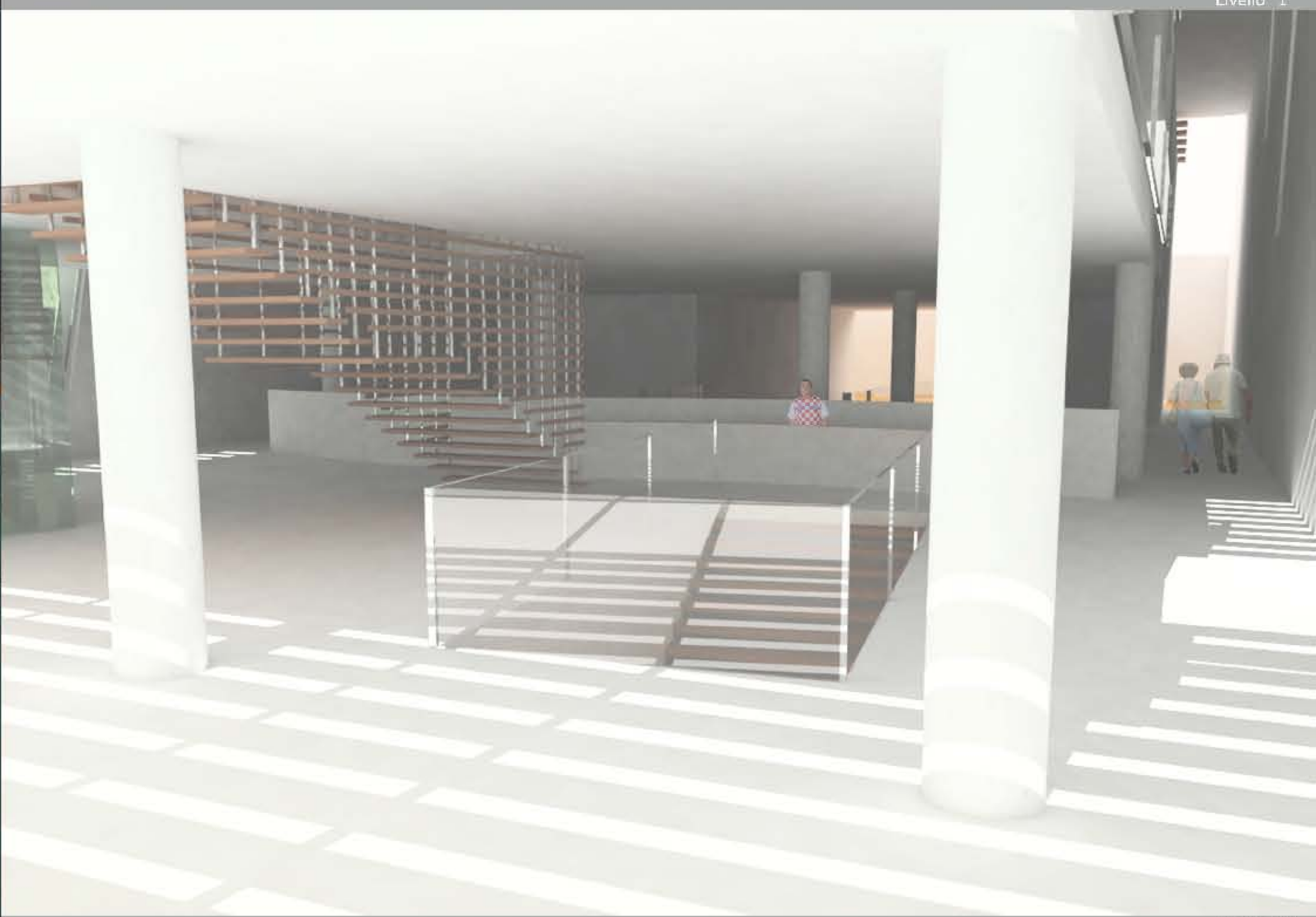
Vista dal percorso _ fotomontaggio



Livello "1"



Vista dall'arrivo dal mare



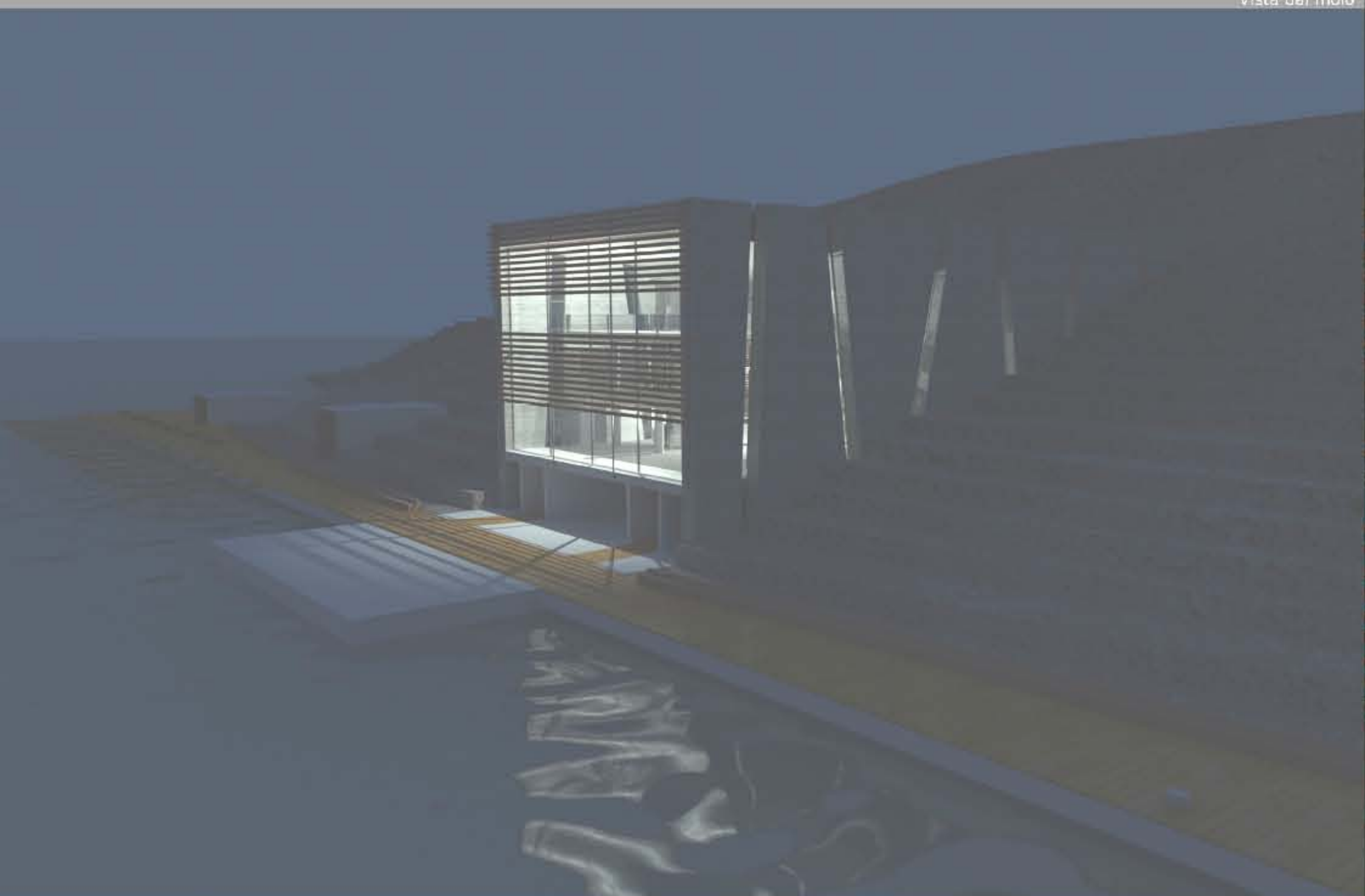
Livello "1"



Vista dal molo



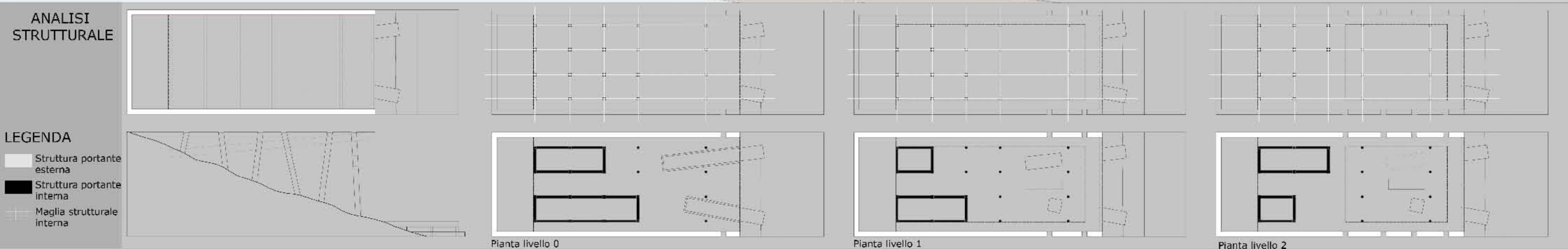
Livello "2"



Vista notturno

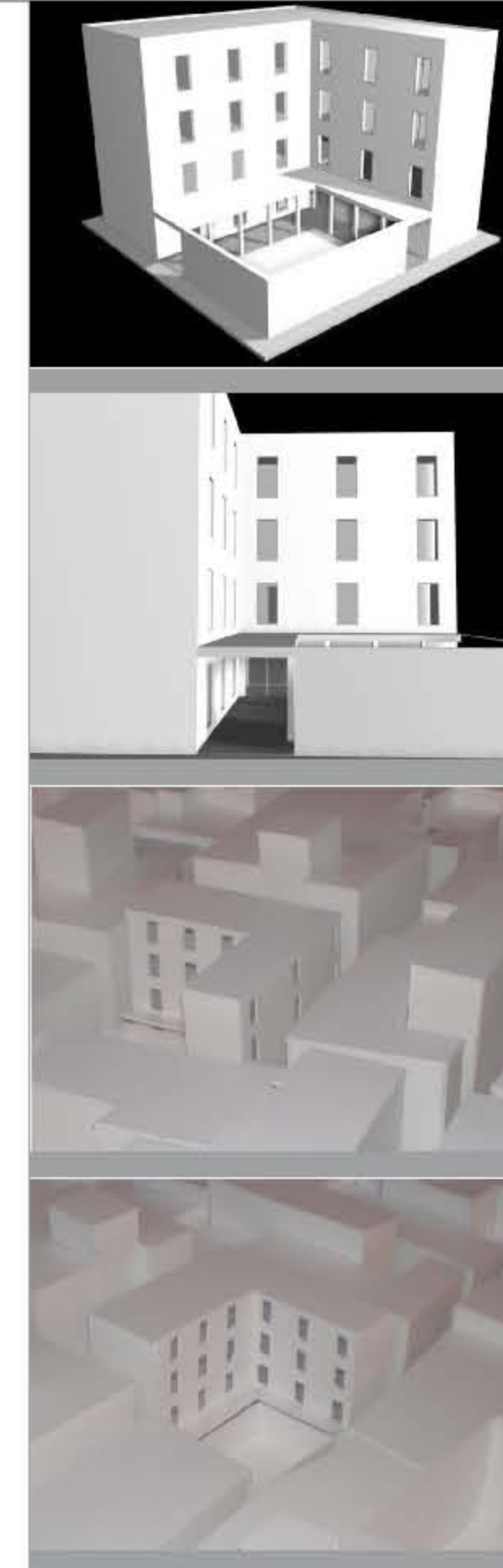
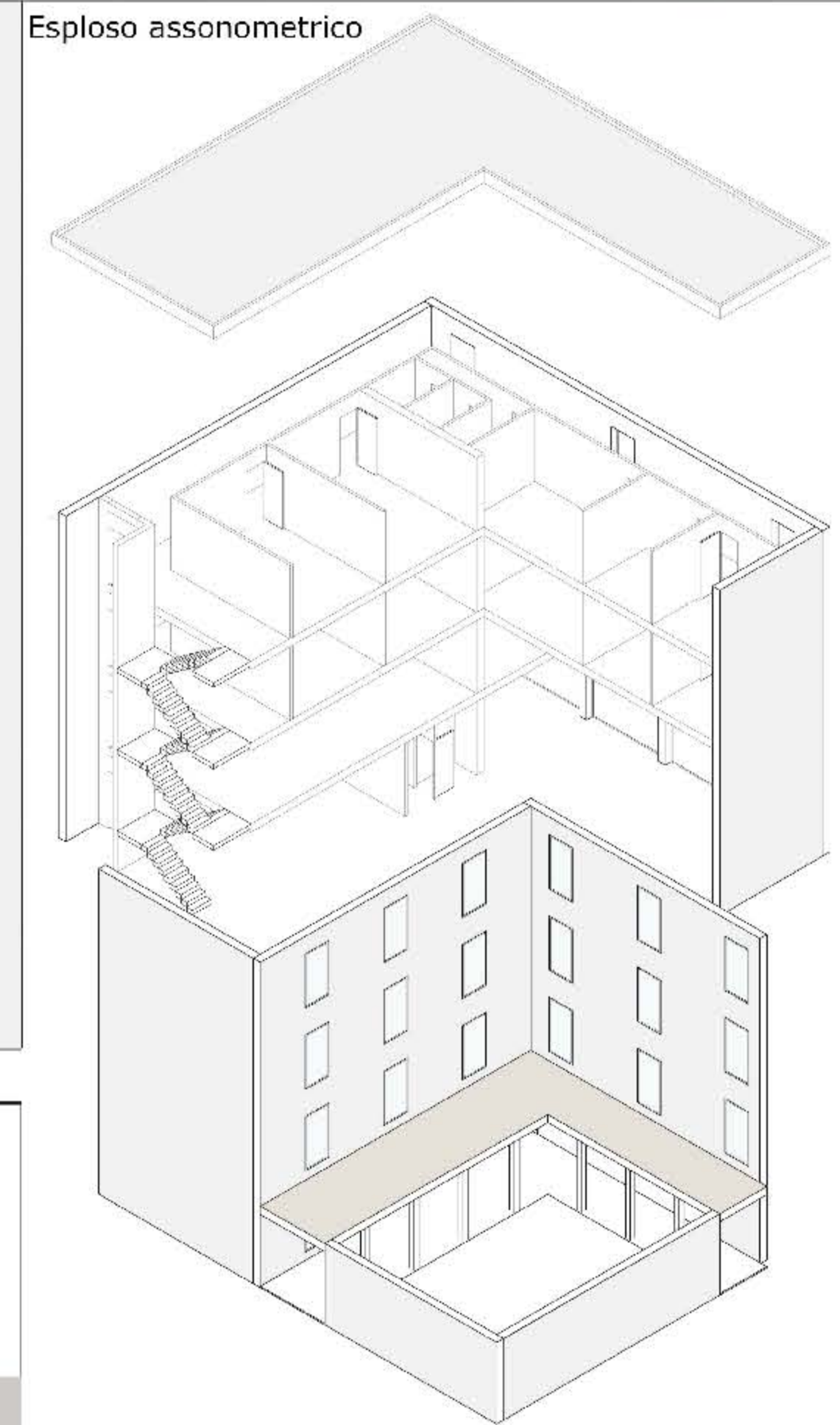
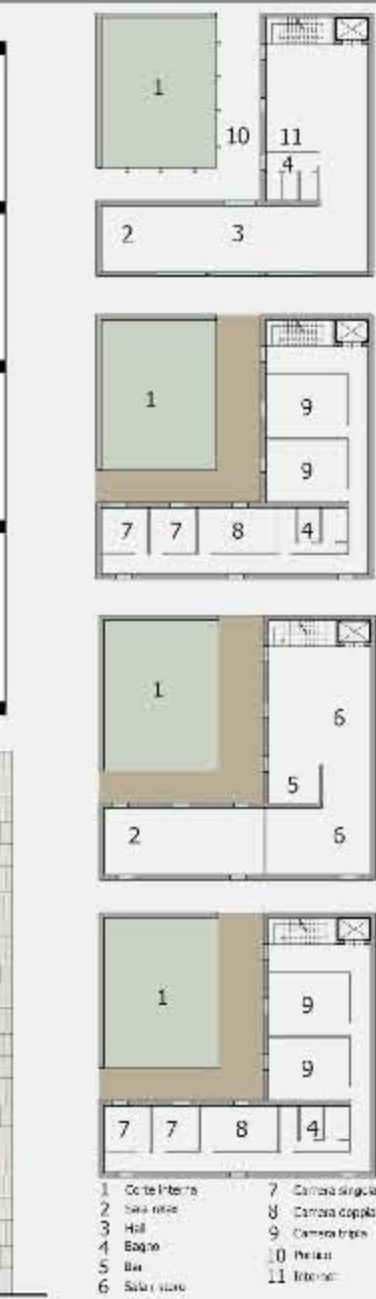
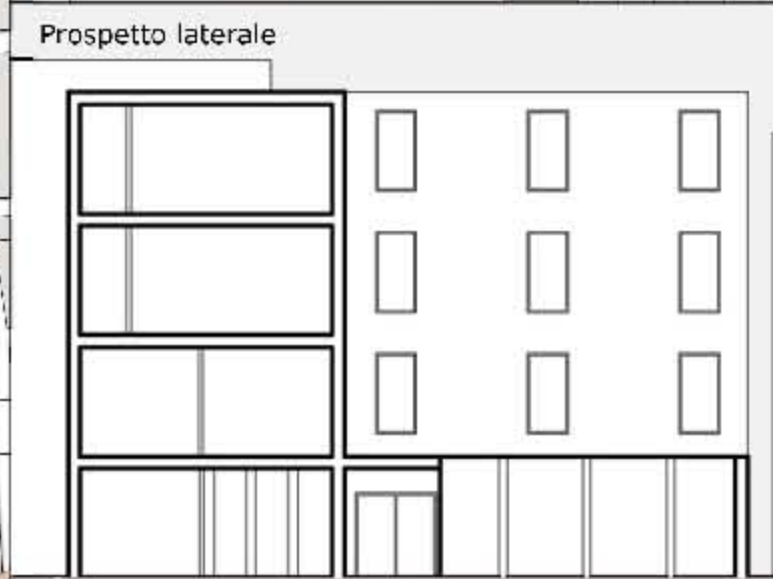
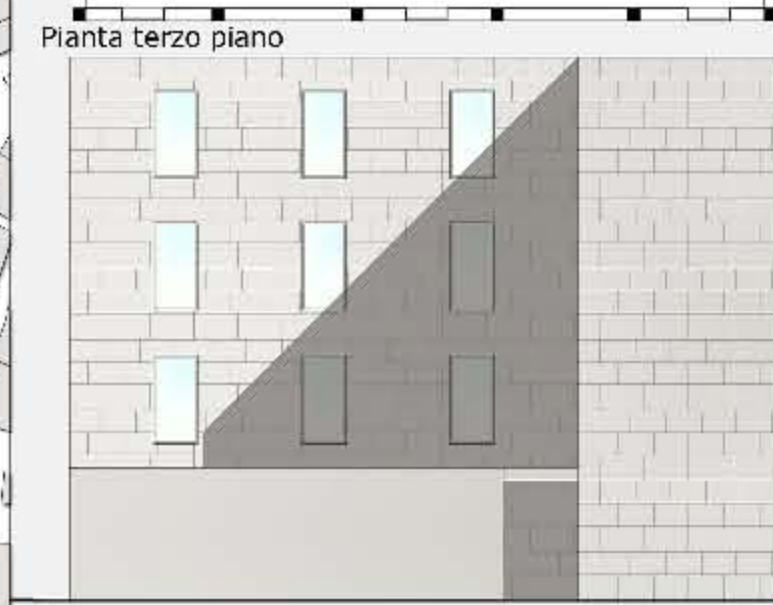
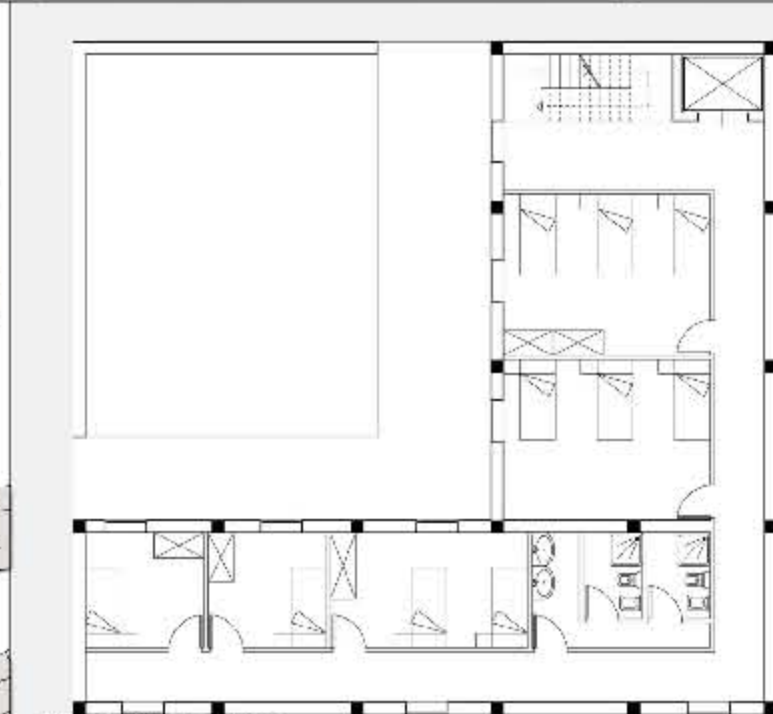
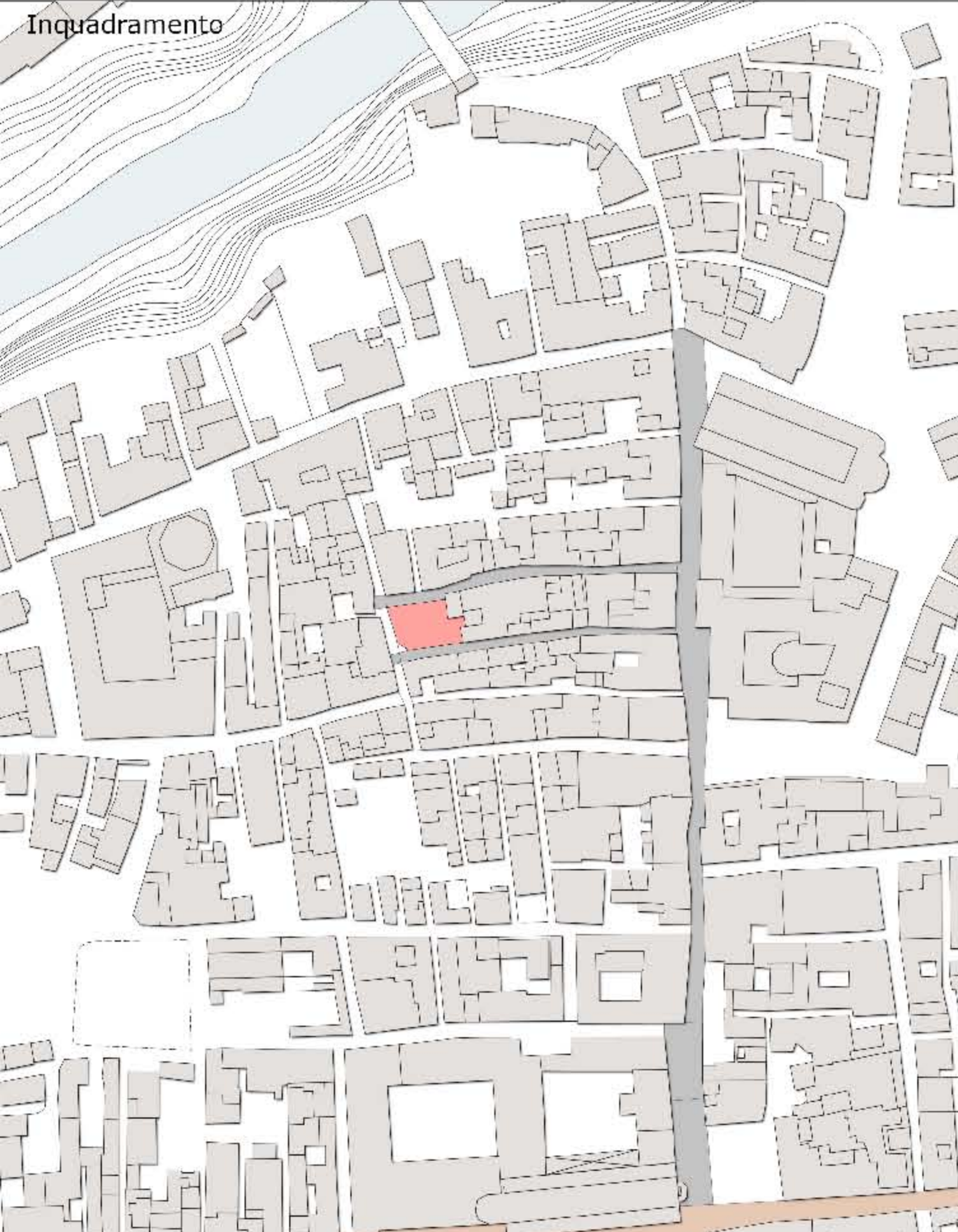


Livello "3"

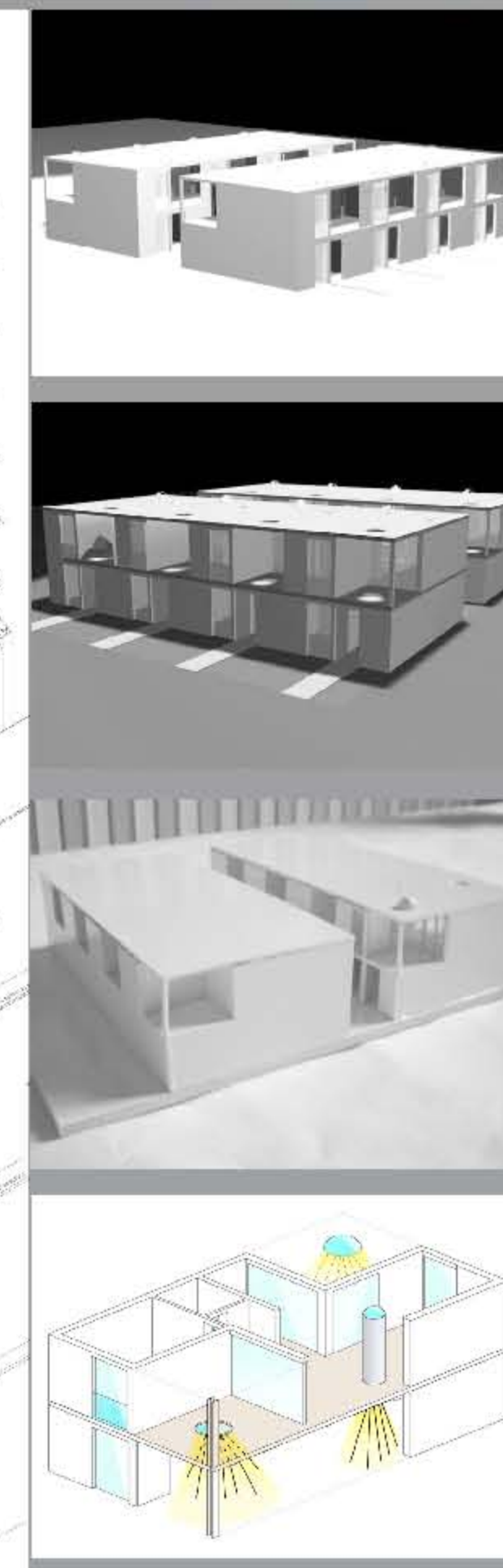
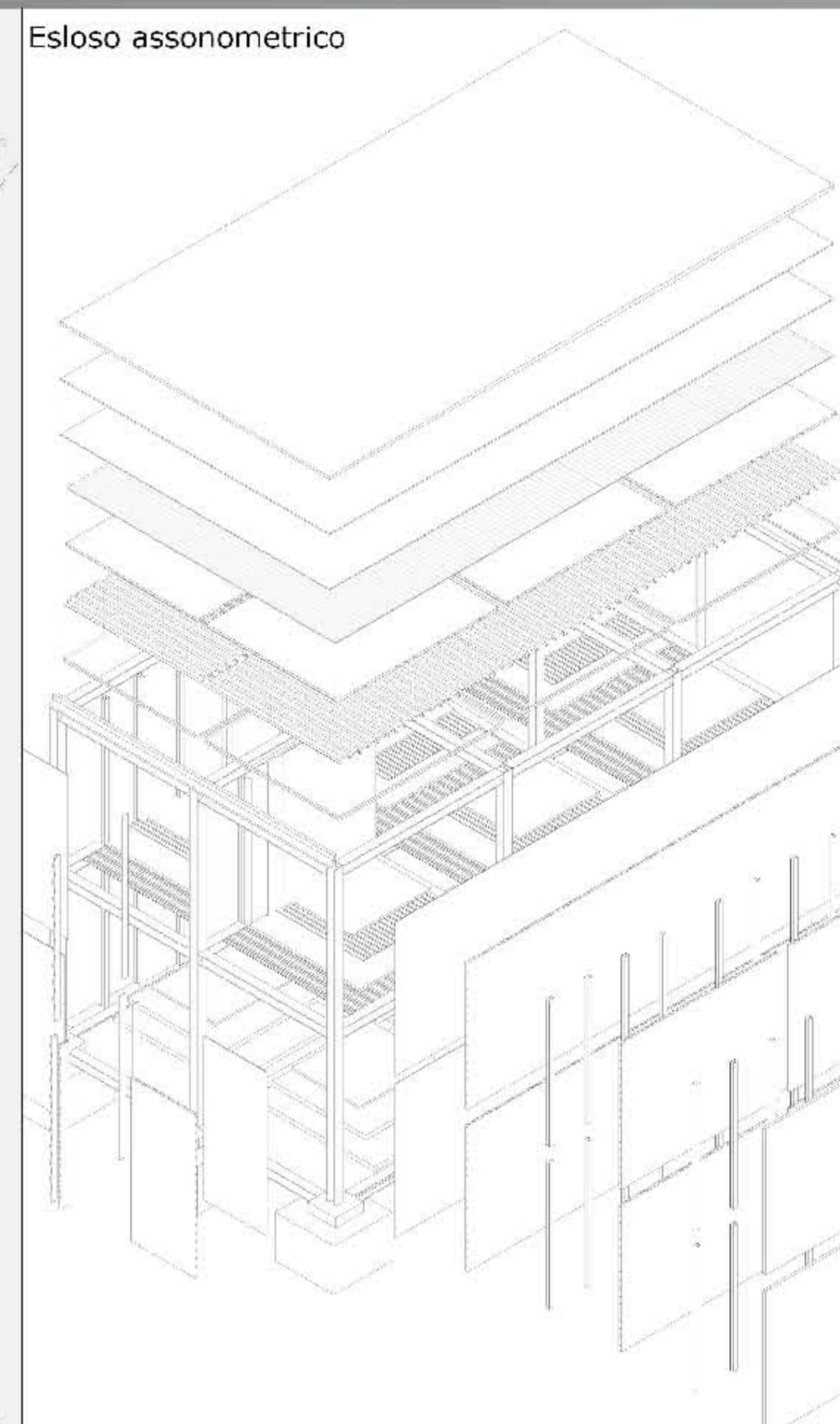
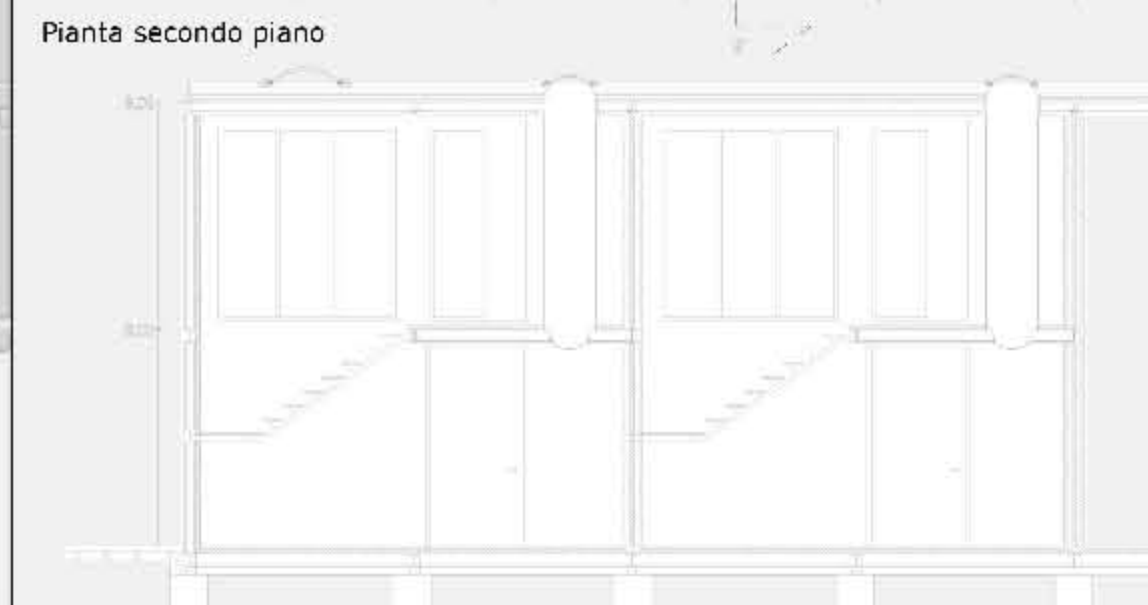
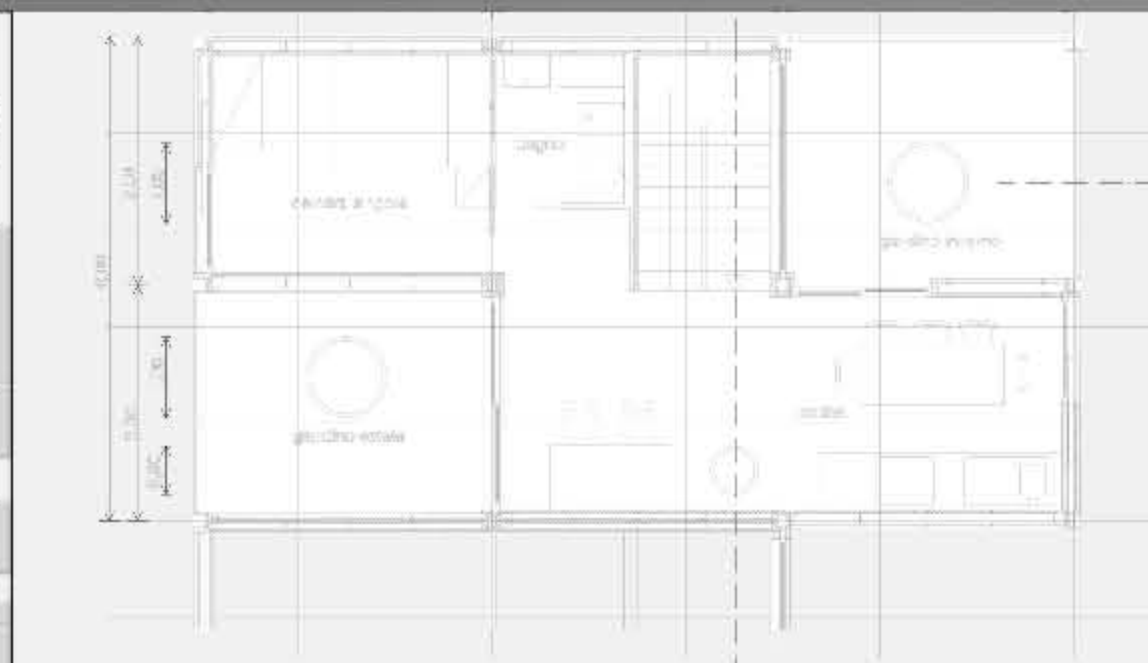
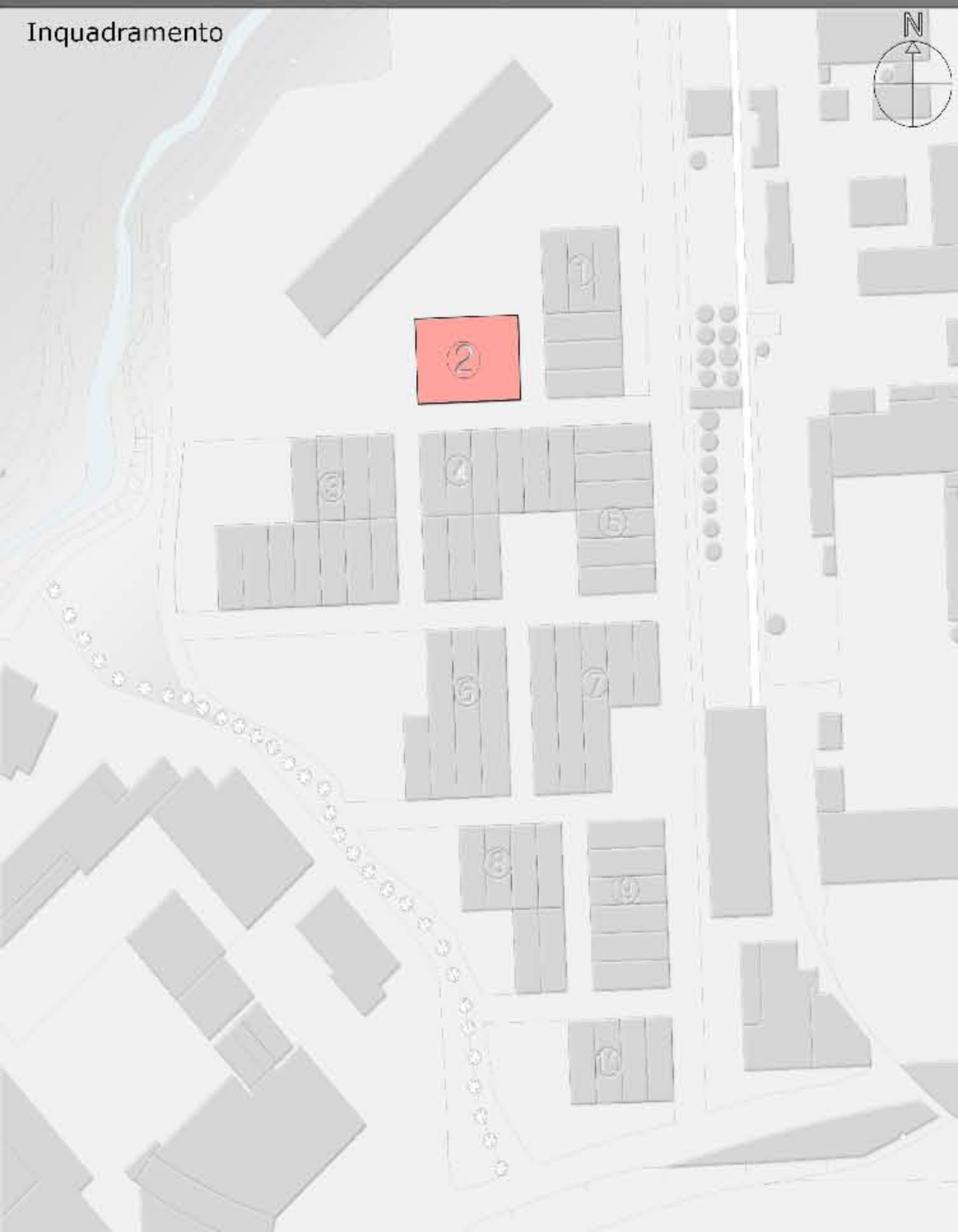


Scala 1:50

Laboratorio di Progettazione Urbana _ a.a. 2007-2008 _ Prof.ssa Elisabetta Agostini



Laboratorio di Sistemi Costruttivi _ a.a. 2007-2008 _ Prof.ssa Sonia Calvelli



Laboratorio di Progettazione dell'Architettura _ a.a. 2008-2009 _ Prof. Luigi Coccia _ Prof.ssa Sonia Calvelli

