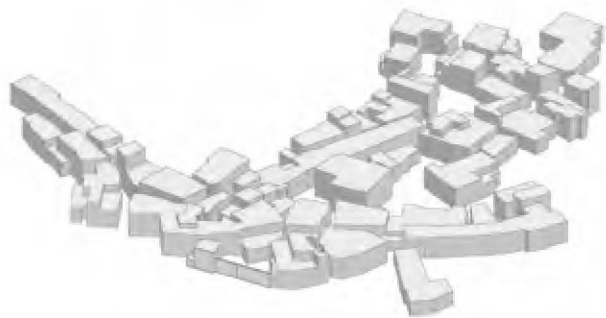
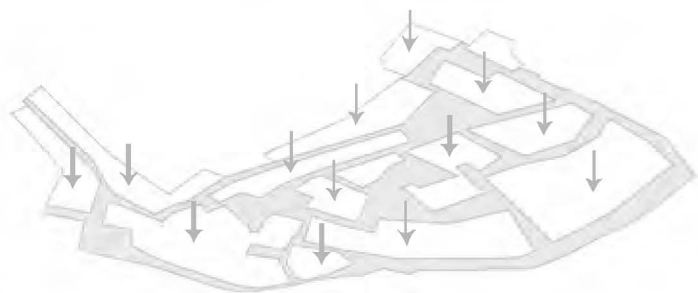


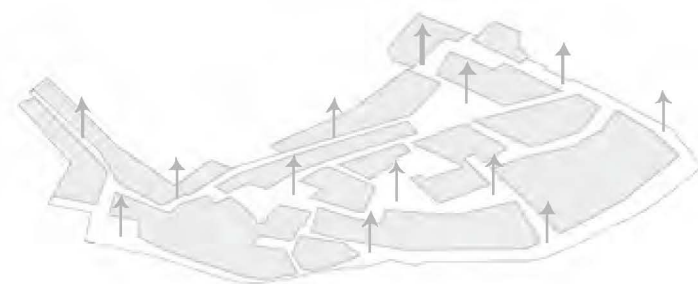
PLANIMETRIA scala 1:2000



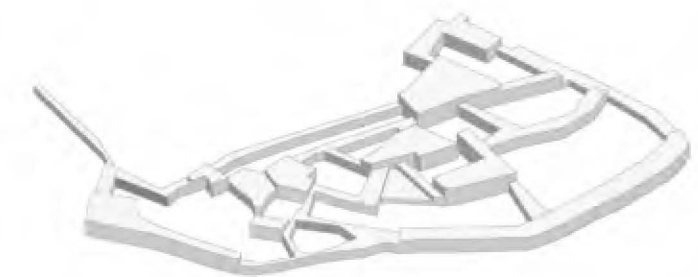
TEMPERA PRE-TERREMOTO



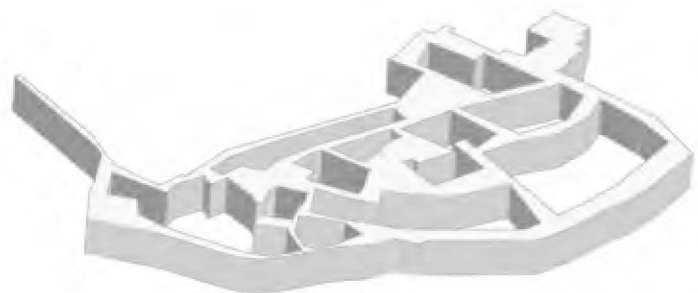
ABBATTIMENTO EDIFICATO RESTANTE POST-TERREMOTO



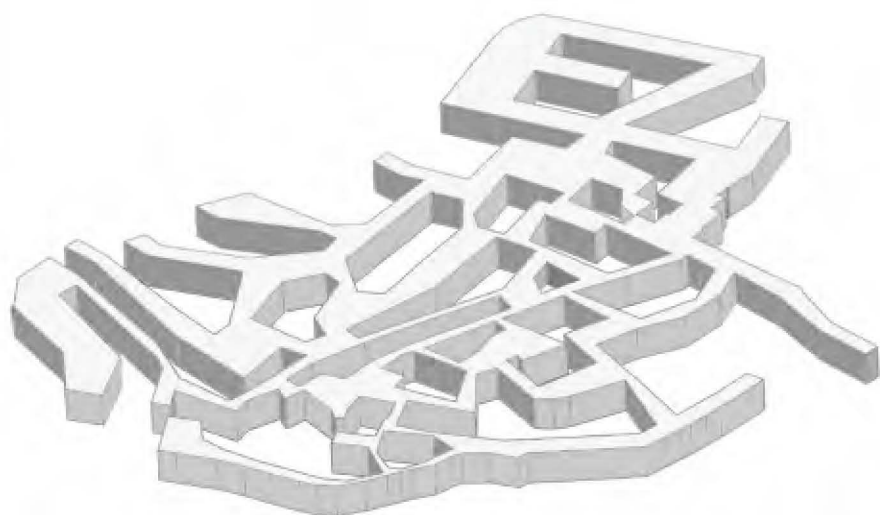
INNALZAMENTO DELLE STRADE



ESTRUSIONE DEL NUOVO EDIFICATO



USO DI UN'UNICA COPERTURA PER TUTTO L'EDIFICATO



AMPLIAMENTO DELL'EDIFICATO



MOBILITA' CARRABILE —
ACCESSIBILITA' PEDONALE →



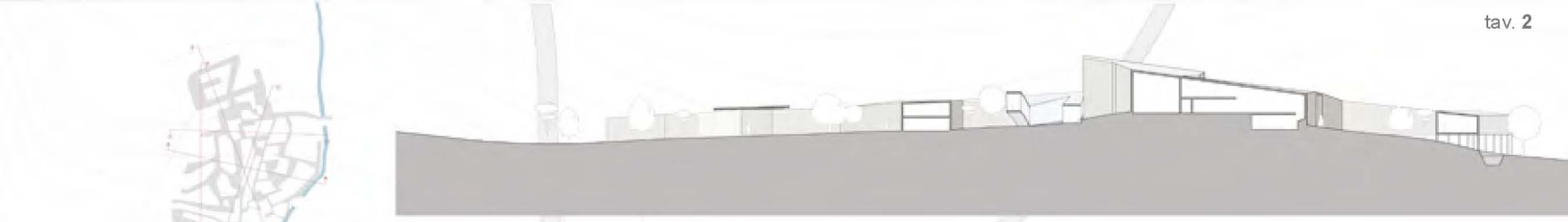
PERCORSI PEDONALI —
CONNESSIONI PER GLI SPAZI APERTI
— IN PERCORSI VETRATI
--- IN SEMPLICE COPERTURA



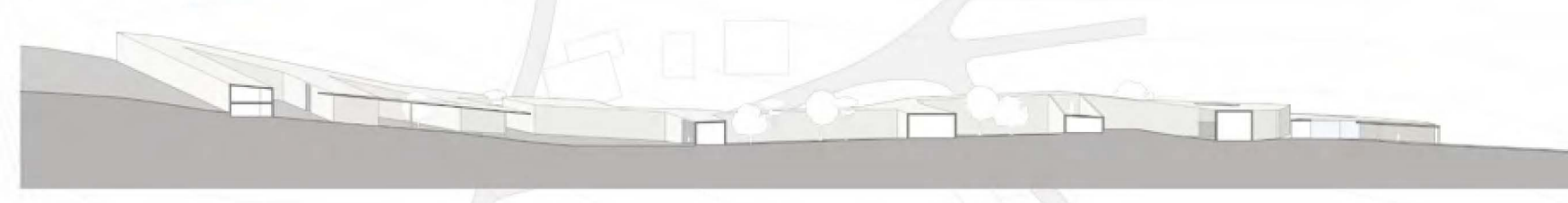
DIFFERENZIAZIONE DEGLI SPAZI APERTI
— PAVIMENTATO
— VERDE



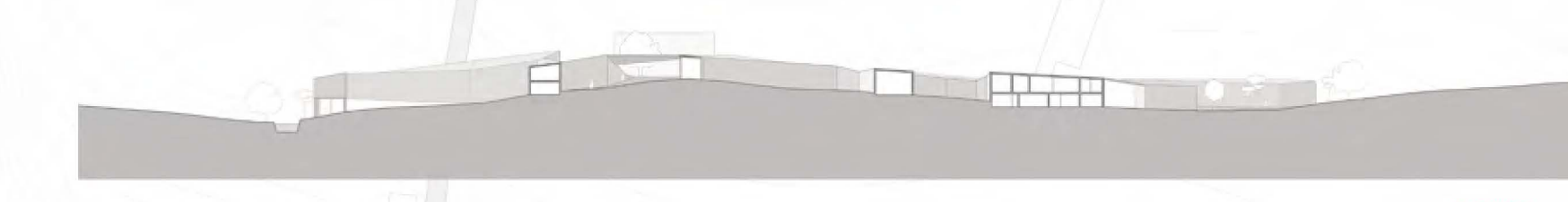
PROGRAMMA FUNZIONALE
— EDIFICI RESIDENZIALI
— EDIFICI CIVICI
— EDIFICI RELIGIOSI
— SERVIZI
— PERCORSI VETRATI



SEZIONE AA



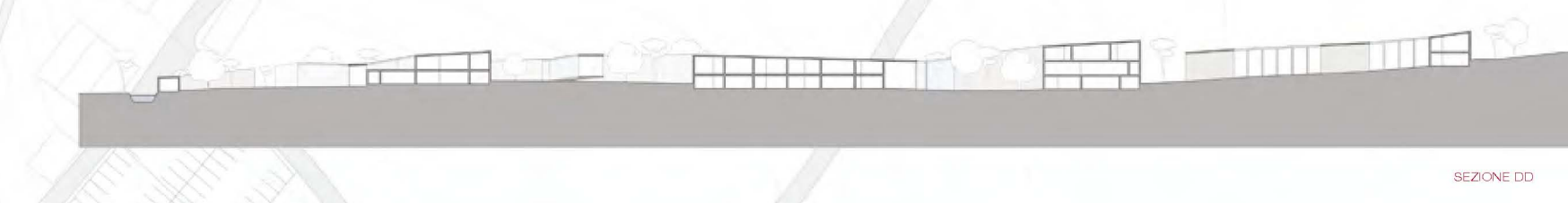
SEZIONE BB



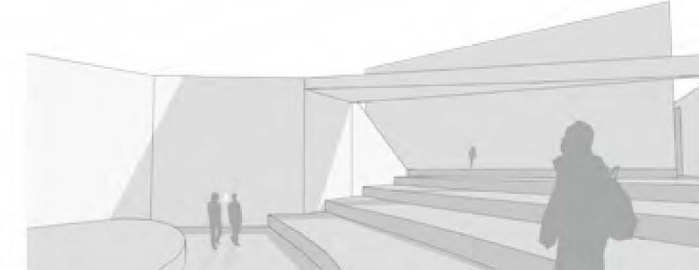
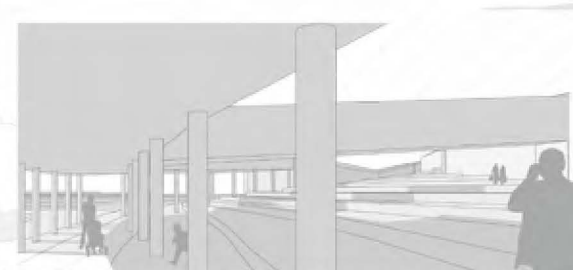
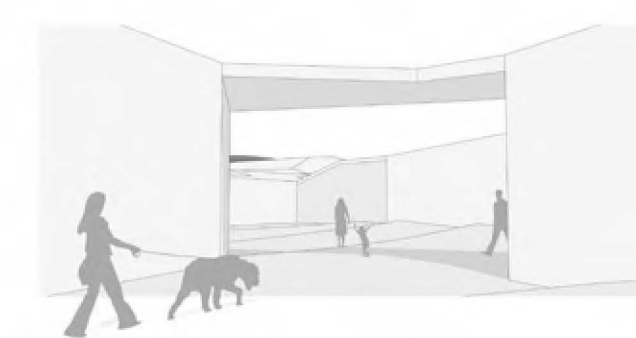
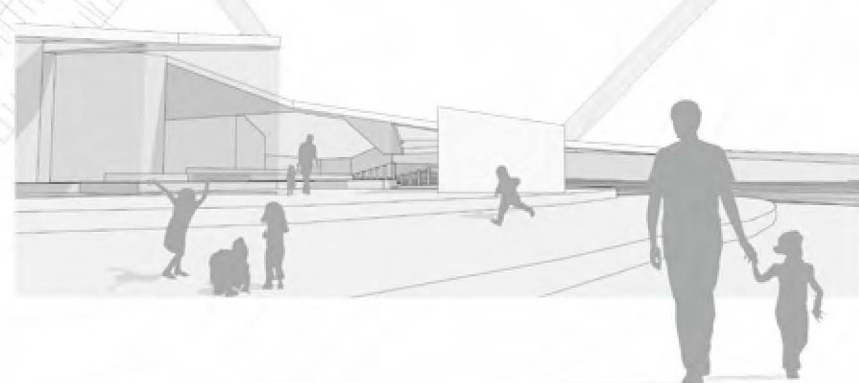
SEZIONE CC



SEZIONE DD

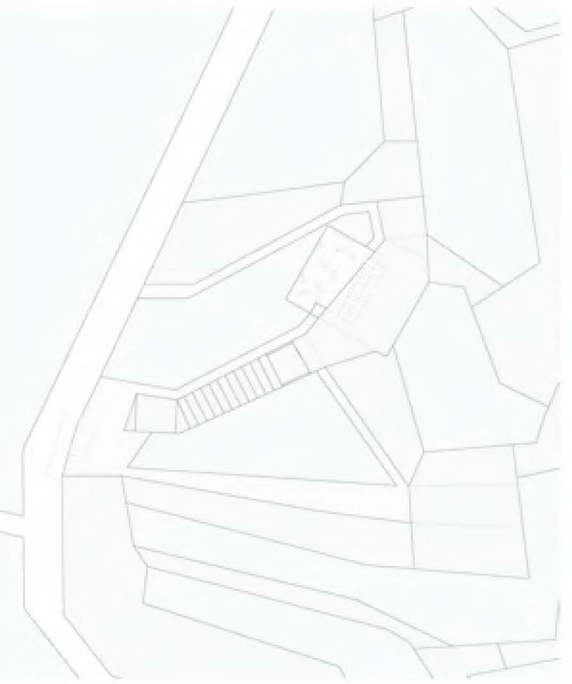


SEZIONE DD

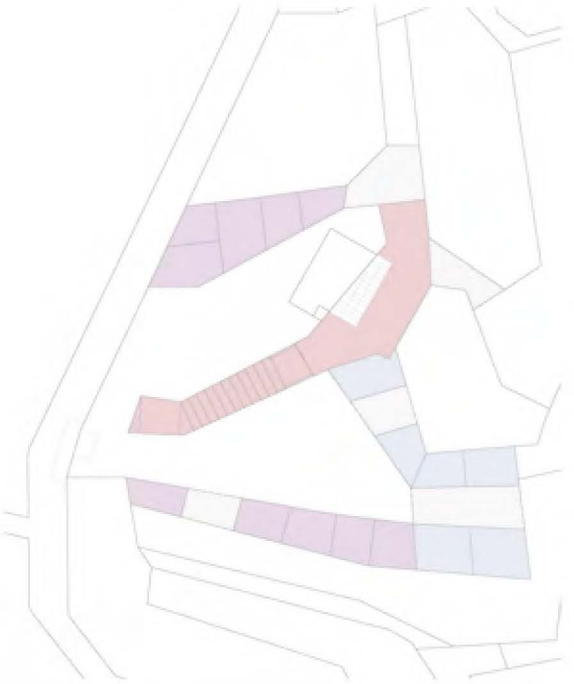




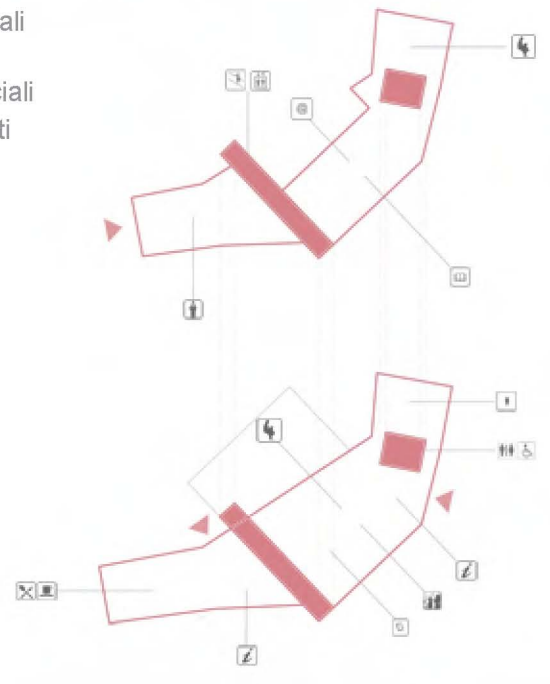
Planimetria scala 1:500

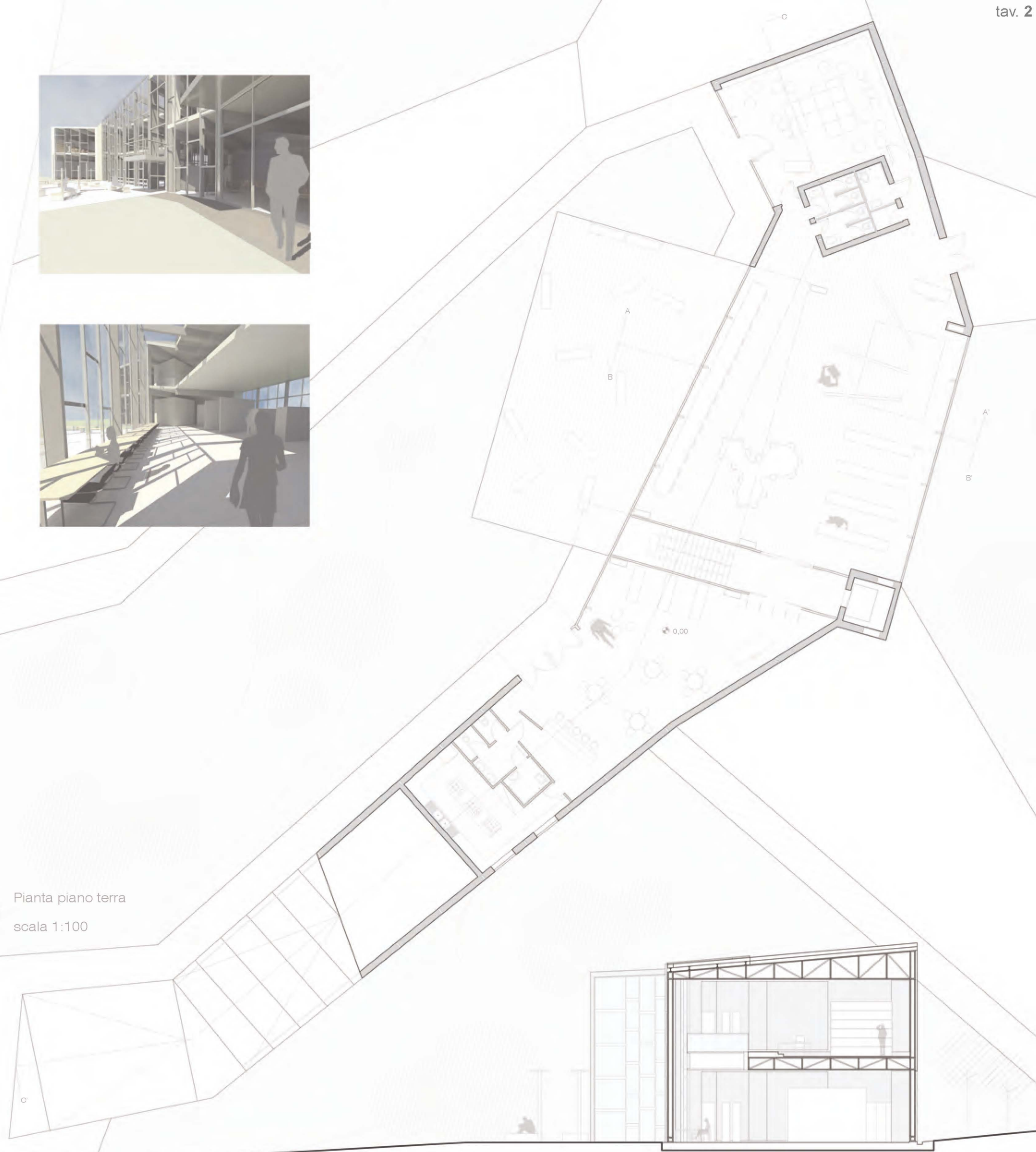


edificato
verde
spazio attrezzato
pavimentato



edifici residenziali
edifici pubblici
edifici commerciali
passaggi coperti





Pianta piano terra
scala 1:100

Sezione A-A'



Prospetto Ovest



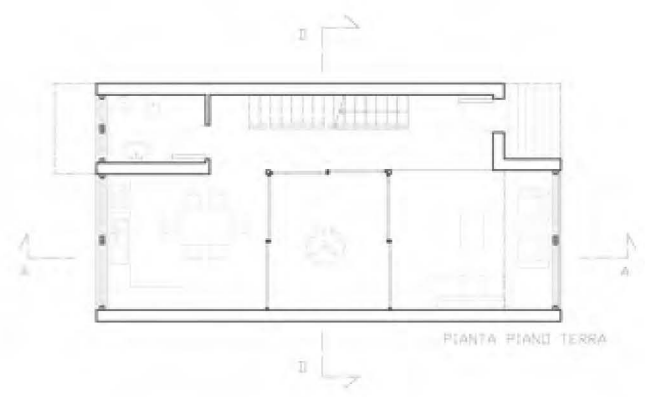
Pianta primo piano
scala 1:100

Sezione B-B'

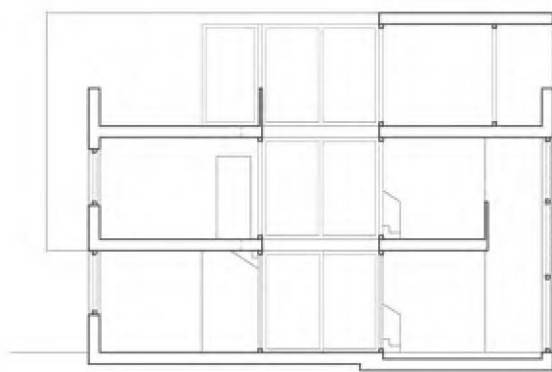


Sezione C-C'





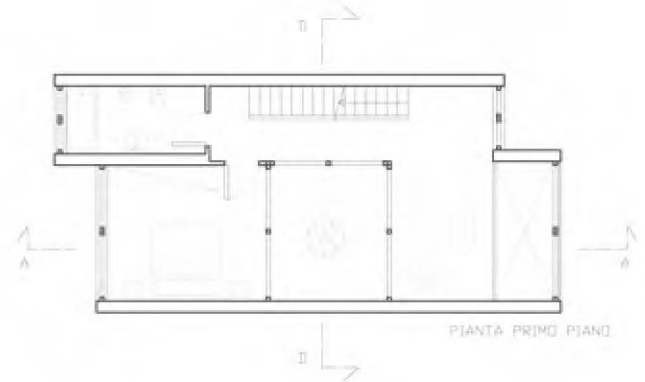
PIANTA PIANO TERRA



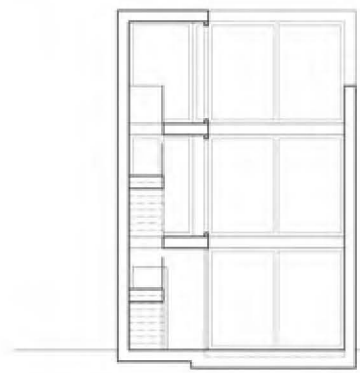
SEZIONE A-A



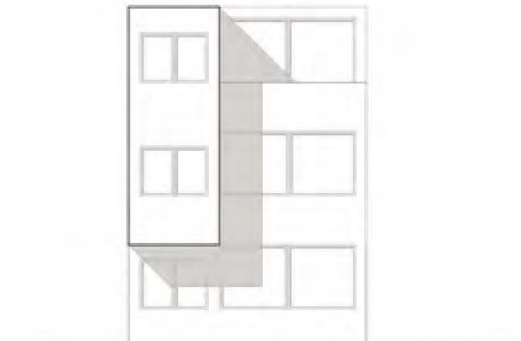
prospetto est con ombra



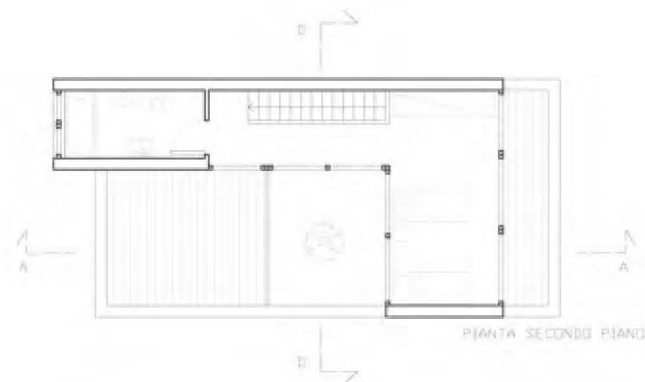
PIANTA PRIMO PIANO



SEZIONE D-D



prospetto ovest con ombra



PIANTA SECONDO PIANO



Laboratorio di fondamenti della progettazione architettonica_Composizione architettonica
 prof. Luigi Coccia_tutor arch. Alesandro Gabbianelli
 a.a. 2007-2008_secondo semestre



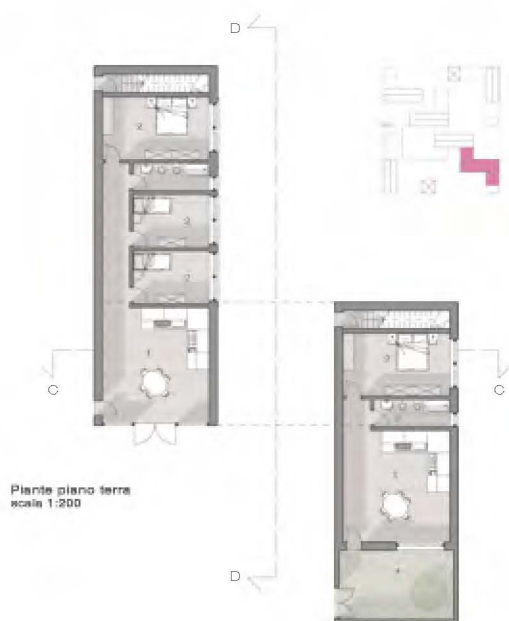
Pianta piano seminterrato



Pianta piano terra



Pianta primo piano scala 1:500

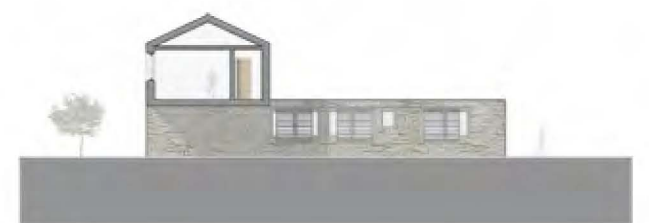


Pianta piano terra scala 1:200

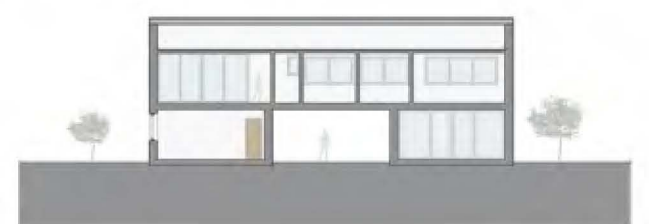


Pianta primo piano scala 1:200

- Legenda
- 1 Cucina
 - 2 Camera
 - 3 Bagno
 - 4 Giardino
 - 5 Terrazzo

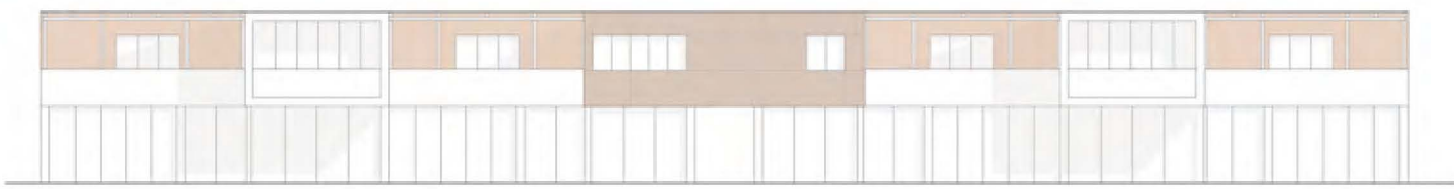


Sezione D-D scala 1:200



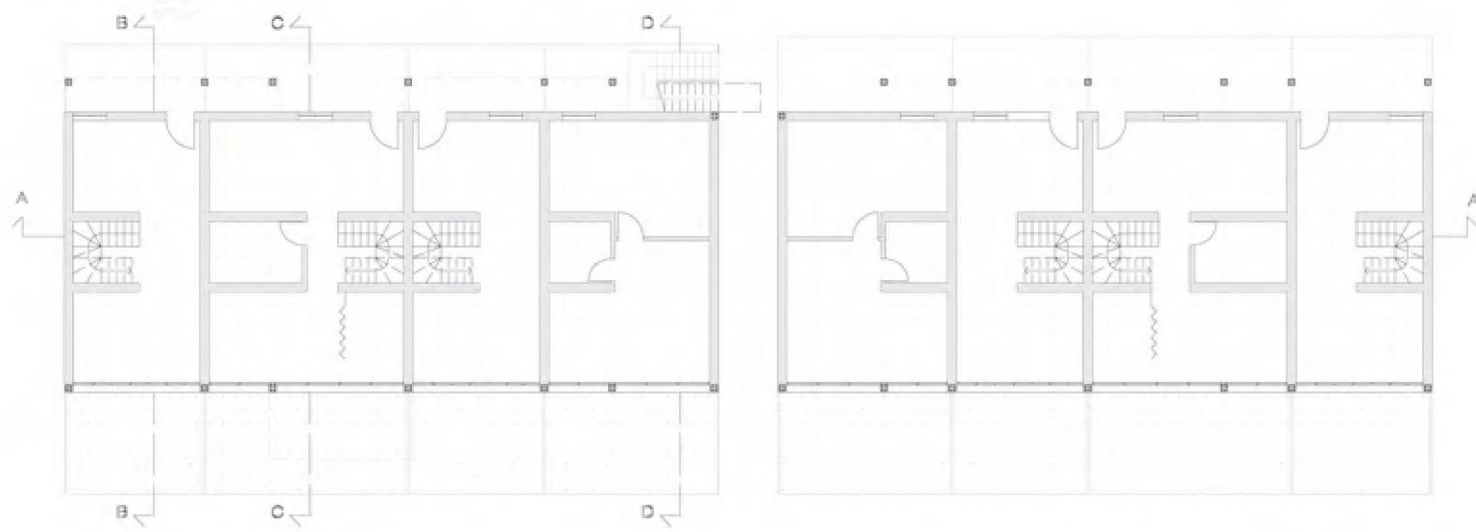
Sezione C-C scala 1:200

Laboratorio di progettazione architettonica e urbana
 prof. arch. Nicola Flora, prof. arch. Gerardo Dotih.
 assistenti arch. Michela Kumka, arch Andrea Stortoni, Jessica Zunica, Riccardo Pagnoni
 a.a. 2008-2009_primo semestre



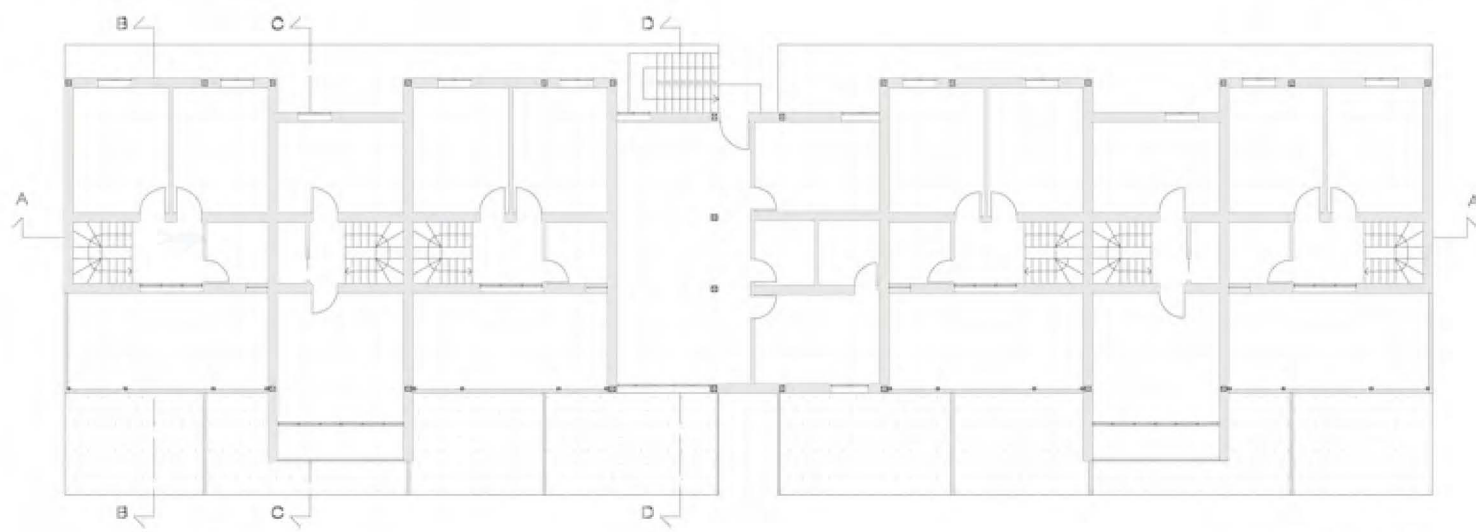
Prospetto Sud

scala 1:200



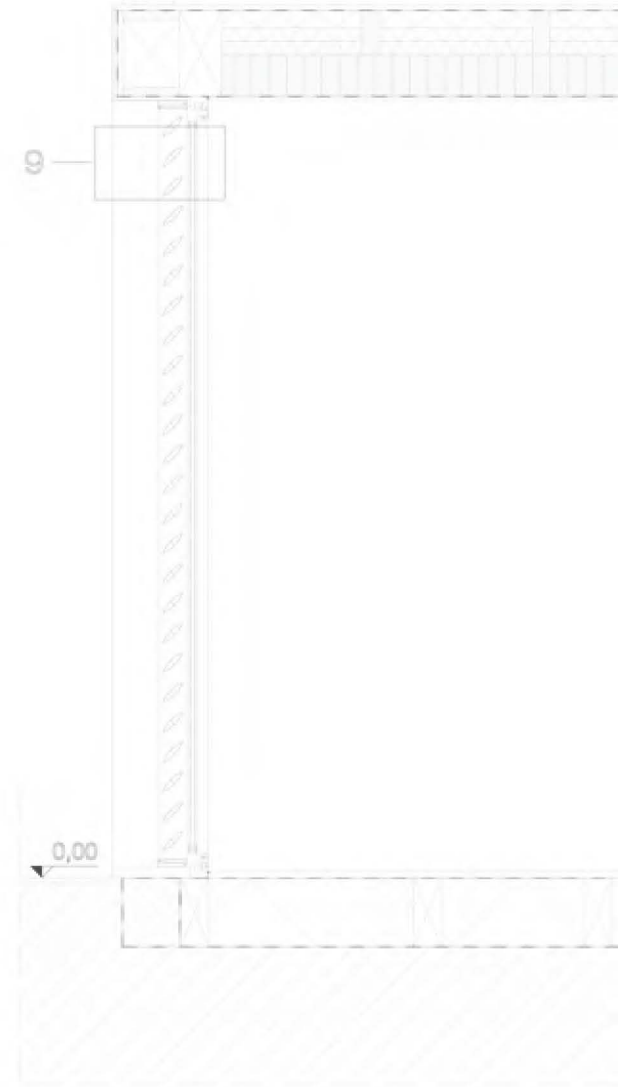
Pianta piano terra

scala 1:200



Pianta primo piano

scala 1:200



SEZIONE E-E

scala 1:20

Laboratorio di costruzione dell'architettura 1_ progettazione di elementi costruttivi
prof. Massimo Perriccioli, Roberta Cocci Grifoni
a. a. 2008-2009 secondo semestre



Laboratorio di progettazione architettonica
prof. Luigi Coccia tutor. arch. Alessandro Gabbianelli a.a- 2009-2010 primo semestre