

## Fiat Panda



La **Fiat Panda**, un mito per chi decide di usare la propria auto per spostarsi in città. Questa vettura ha fatto la storia della casa automobilistica torinese, e oggi viene proposta in diverse versioni (qui in foto quella Young, frizzante e ricca di dettagli). Le **dimensioni del bagagliaio**? Non male per una city car, anche se il confronto con altre tipologie è impossibile.

- **Bagagliaio: 225 litri**
- *Prezzo: da 10.950 €*
- *RC auto Fiat Panda – da 238.87 € con Direct Line a 709.26 € con Linear*

## Fiat Punto



Ancora una vettura Fiat sul podio. Tra le city car, la Punto è una vera regina: look curato, comfort all'altezza delle concorrenti, fascia di prezzo competitiva. Il motore si fa rispettare e il bagagliaio, anche se di **dimensioni inferiori** rispetto alle altre categorie, è nella media delle dirette concorrenti.

- **Bagagliaio: 275 litri**
- *Prezzo: da 13.200 €*
- *RC auto Fiat Punto – da 238.87 € con Direct Line a 709.26 € con Linear*

## Lancia Ypsilon



Lancia Ypsilon, ovvero un'auto perfetta per i tuoi **itinerari metropolitani**. Puoi scegliere tra diverse motorizzazioni – benzina, bifuel, diesel – e le dimensioni sono leggermente abbondanti rispetto alle altre auto della categoria city car. Altro punto di forza della mitica **Lancia Ypsilon**: gli interni, difficile trovarne di così curati.

- **Bagagliaio: 245 litri**
- *Prezzo: da 13.200 €*
- *RC auto Lancia Ypsilon – da 231.66 € con Direct Line a 779.02 € con Linear*

## Volkswagen Golf



La Volkswagen Golf è la berlina più venduta in Italia? Un motivo ci sarà. Lo puoi trovare nell'estetica sempre raffinata, nelle comodità di viaggio garantiti da **380 litri di spazio per le valige** recuperati in soli 4 metri. E poi ci sono i prezzi che riescono ad accontentare tutti: questa è la grande berlina Volkswagen.

- **Bagagliaio: 380 litri**
- *Prezzo: da 18.700 €*
- *RC auto Volkswagen Golf – da 231.83 € con Direct Line a 709.26 € con Linear*

## Citroën C3 Picasso



Terzo posto per la monovolume di casa Citroën. Il prezzo competitivo e la **qualità del motore** (Pure Tech 1.2 e 1.6 BlueHdi, entrambi da 110 cavalli) fanno guadagnare alla C3 Picasso una posizione d'onore tra i garage italiani. Le dimensioni toccano i quattro metri e dieci per dare spazio al bagagliaio interessante.

- **Bagagliaio: 385 litri.**
- *Prezzo: da 17.800 €*
- *RC auto Citroën C3 Picasso– da 224.59 € con Direct Line a 662.21 € con Linear*

## Ford Focus



Una certezza che viaggia spedita sulle quattro ruote. La storica affidabilità Ford si ritrova in questa station wagon con motori EcoBoost che ti permettono di scegliere tra 100 e 250 cavalli. La **Ford Station Wagon** è perfetta per i viaggi dato che sfrutta un bagagliaio di **490 litri in 4 metri**.

- **Bagagliaio: 490 litri**
- *Prezzo: da 19.000 €*
- *RC auto Ford Focus – da 226.16 € con Direct Line a 687.50 € con Linear*

## Alfa Romeo Giulietta



Un'automobile storica, un brand riconosciuto in tutto il mondo, una qualità che non ha bisogno di tante spiegazioni: la classe e l'affidabilità dell'**Alfa Romeo Giulietta** anticipano qualsiasi valutazione. L'ampia scelta di motorizzazioni disponibili per questa berlina soddisfa qualsiasi esigenza. D'altro canto le comodità di viaggio sono quelle di un'auto degna delle **migliori cruiser**.

- **Bagagliaio: 350 litri**
- *Prezzo: da 19.750 €*
- *RC auto Alfa Romeo Giulietta – da 242.79 € con Direct Line a 687.50 € con Linear*

## Ford C-Max



Un'auto che stupisce per potenza del motore. La Ford C-Max è una **vettura perfetta** in ogni occasione: per gli spostamenti in città, per una gita fuori porta, per un viaggio con amici e famiglia. Il prezzo è interessante se consideri la qualità del prodotto e la disponibilità meccanica, e il bagagliaio dipende dai modelli (da 432 e 448 litri).

- **Bagagliaio: 432 litri**
- *Prezzo: da 20.000 €*
- *RC auto Ford C-Max – da 216.32 € con Direct Line a 662.21 € con Linear*



## Fiorino Furgone



**PTT:** da 16 a 18 quintali

**Portata:** da 500 a 660 Kg

**Volumetria:** 2,1/2,8\* m<sup>3</sup>

**Dimensioni esterne:**

Larghezza: 1716 mm

Lunghezza: 3864 mm

Altezza: 1721 mm

### Dimensioni vano di carico:

- Lunghezza 1.523 mm/2.491\* mm,

- Larghezza 1.473 mm,

- larghezza tra passaruote 1046 mm

- altezza 1205 mm

- soglia di carico a 527 mm

---

## COMPATTE

| Posizione | Modello                      | Capacità  |
|-----------|------------------------------|-----------|
| 1         | Hyundai i20 3 porte          | 336 litri |
| 2         | Skoda Fabia                  | 330 litri |
| 3         | Hyundai i20 5 porte          | 326 litri |
| 4         | Dacia Sandero                | 320 litri |
| 5         | Renault Clio                 | 300 litri |
| 6         | Seat Ibiza                   | 292 litri |
| 7         | Ford Fiesta                  | 290 litri |
| 8         | Kia Rio                      | 288 litri |
| 9         | Toyota Yaris                 | 286 litri |
| 10        | DS3, Opel Corsa, Peugeot 208 | 285 litri |



- **Derivati dal Blues**
  - Boogie-woogie
  - Country blues
  - Electric blues
  - Swamp blues
  - Talking blues
  - Rhythm and blues
- *Derivati del Country'*
- Country rock
- Fado
- Flamenco
- **Derivati del Funk**
  - Disco music
- **Derivati dell'Heavy metal**
- Alternative metal
  - Funk metal
  - Industrial metal
  - Nu metal
  - Punk metal
  - Rap metal
- Avantgarde metal
- Black metal
  - Viking metal
  - Symphonic black metal
- Death metal
  - Death 'n' roll
  - Blackened death metal
  - Brutal death metal
  - Grindcore
    - Cybergrind
    - Deathgrind
    - Goregrind
    - Noisegrind
    - Porngrind
  - Melodic death metal
  - Progressive death metal
- Doom metal
  - Black doom metal
  - Death doom metal
  - Drone doom metal
- Funeral doom metal
- Sludge metal
- Epic metal
- Folk metal
  - Celtic metal
  - Oriental metal
  - Viking metal
- Christian metal (White metal)
  - Unblack metal
- Gothic metal
- Hair metal (Glam metal)
  - Hard & heavy
- Heavy metal classico
- Metalcore
  - Deathcore
  - Mathcore
- Medieval metal
- Neoclassical metal
- New Wave of British Heavy Metal
- Pop metal
- Power metal
  - Progressive power metal
  - Speed power metal
  - Symphonic power metal
- Progressive metal
  - Progressive death metal
  - Progressive power metal
- Stoner rock
- Symphonic metal
  - Symphonic black metal
  - Symphonic gothic metal
  - Symphonic power metal
- Thrash metal
  - Crossover thrash
  - Groove metal
  - Speed thrash metal
- **Derivati del Jazz**
- Acid jazz
- Be bop
- Cool jazz
- Dixieland
- Free jazz

- Jazz fusion
- Jazz manouche
- Jazz samba
- Hard bop
- Latin jazz
- Main stream
- Modal jazz
- New Orleans
- Nu jazz
- Smooth jazz
- Swing
- Western swing
  
- **Derivati della Musica pop**
- Musica beat
  - Merseybeat
- Pop latino
- Power pop
- Britpop
- Europop
- Indie pop
- Jangle pop
- J-pop
  - Shibuya kei
- K-pop
- Elettropop
- New wave
  - New romantic
  - Synth pop
  
- **Derivati della Soul music**
  - Northern Soul
  - Neo soul
  - Hip hop soul
  
- **Derivati del Rap**
  - Alternative rap
  - Comedy rap
  - Conscious rap
  - Chopped and screwed
  - Christian rap
  - Gangsta rap
  - G-funk
  - Hardcore rap
  - Homo hop
  
- Horrorcore
- Instrumental hip hop
- Jazz rap
- Latin rap
- Mafioso rap
- Nerdcore rap
- Underground rap
- Old school rap
- Pop rap
- Country rap
- Elettrorap
- Hip house
- Hip life
- Rap rock
- Rap metal
- Rapcore
- Raggamuffin rap
  
- **Derivati della Musica rock**
- Rock and roll
  - Frat rock
  - Rockabilly
  - Surf rock
  - Twist
  - Roots rock
    - Americana
    - West Coast
  - AOR
- Blues-rock (o rock blues)
  - Southern rock
  - Swamp rock
- Folk rock
  - Country rock
  - Raga Rock
  - Combat Folk
- Garage rock
- Hard rock
  - Glam rock
    - Neo-glam
  - Hard & heavy
  - Heavy metal
- J-Rock
  - Visual kei
- Pop rock (o rock pop)
- Punk rock

- Origini del punk rock
- Hardcore punk
  - Riot grrrl
  - Crust punk
  - Grindcore
  - New York hardcore
  - Emo (o emocore)
  - Melodic hardcore punk
  - Punk metal
  - Metalcore
  - Straight edge
  - Screamo
  - Post-hardcore
  - Skate punk
  - Thrashcore
- No wave
- Powerpop
- Oi!
- Anarcopunk
- Ska punk (o skacore)
- Horror punk
  - Death rock
  - Psychobilly
- Pop punk (o punk pop)
- Street punk
- Garage punk
- Post punk
  - Alternative rock (o alt rock)
    - Grunge
      - Post-grunge
    - Indie rock
  - Gothic rock
    - Coldwave
    - Darkwave
      - Darkwave neoclassica
  - Post punk revival
- Rock demenziale
- Rock psichedelico
  - Acid rock
  - Neo-psichedelia
    - Paisley underground
    - Shoegaze
- Scena Madchester
- Rock progressivo
  - Art rock
  - Krautrock
  - Neoprogressive
  - Rock sinfonico
  - Rock progressivo italiano
  - Scena di Canterbury
- Rock sperimentale (o avant-garde rock)
  - Post-rock
  - Math-rock
- **Derivati dello Ska**
  - Dancehall
  - Reggae
    - Reggaeton
    - Ragga
    - Dub
  - Rocksteady
  - Skacore
  - Ska punk
    - Bluebeat
  - Ska revival
    - 2 tone ska
- Tango Argentino
- Patchanka
- World Music
- **Derivati della Musica elettronica**
- Industrial
- Musica ambientale
  - Dark ambient
  - Ambient techno
  - Ambient dub
- Etno-elettronica
- Musica new age
- Electronic dance music
- New wave
  - Synth pop
    - Italo disco
  - New beat



- Lounge
  - Chillout
  - Downtempo
  - Trip hop
  - Broken beat
- Techno
  - Acid techno
  - Ambient techno
  - Derp techno
  - Detroit techno
  - Minimal techno
  - Hard techno
- Trance
  - Progressive trance
    - Dream progressive
  - Euro trance
  - Goa trance
  - Hard trance
  - Neo trance
  - Acid trance
  - Uplifting trance
  - Psychedelic trance
  - Robo trance
- Breakbeat
  - UK garage
    - 2step
    - Nu soul
    - Dubstep
    - Grime
  - Acid breaks
  - Progressive breaks
  - Ambient breaks
  - Funky breaks
- Drum'n'Bass
  - Techstep
  - Liquid funk
- Musica dance
  - Eurodance
  - Hard dance
  - Italo dance
- Lento violento
- Hands up
- House music
  - Acid house
  - Deep house
  - Hard house
  - Latin house
  - Moombahton
  - NJ house
  - Electro house
  - Tribal house
  - Fidget house
  - Progressive house
  - Soulful house
  - Tech-house
  - Microhouse
  - Dutch house
- Techno hardcore
  - Jumpstyle
  - Gabber
  - Hardstyle
  - Speedcore
  - Happy hardcore
  - Breakcore
  - Frenchcore
  - Tekno

## Musica colta

Con il termine *Musica colta* ci si riferisce principalmente alle musiche di tradizione classica, includendo in questo genere forme musicali sia della musica classica contemporanea, sia della Musica classica storicizzata. Forme differenti di musica colta si sono sviluppate in diverse parti del mondo, raggruppando stili che invitano alla decostruzione tecnica e dettagliata<sup>[7]</sup> e critica, richiedendo una particolare attenzione dell'ascoltatore. In pratica, in occidente, la musica colta è caratterizzata dalla tradizione musicale scritta<sup>[8]</sup>, preservata da forme di annotazione musicale ed opposta alla musica trasmessa oralmente (musica folclorica) o alla musica trasmessa con mezzi di produzione industriale (musica popolare)<sup>[8][9]</sup>. Storicamente, gran parte della musica colta occidentale è stata scritta con l'utilizzo delle forme di annotazione musicale evolutesi in Europa dal Rinascimento in poi, che arrivarono al loro pieno compimento nel periodo del romanticismo. L'identità di un'"opera" o di una "composizione" di musica colta è quindi generalmente definita più dalla sua versione annotata che dalle particolarità di esecuzione. Questa concezione è applicabile in modo particolare nel caso della musica classica occidentale. La musica colta può inoltre includere certe forme di Jazz, sebbene molti ritengano che il jazz sia soprattutto una forma di musica popolare.

## Alcuni generi di musica colta

- Musica classica
- Musica sacra
  - Canto gregoriano
  - Musica corale
  - Cantata
  - Musica liturgica
- Musica sinfonica

- Poema sinfonico
- Musica da camera
  - Musica pianistica
- Musica per balletto o Musica per danza
- Opera lirica
  - Opera seria (Italia)
  - Intermezzo (Italia)
  - Opera buffa (Italia)
  - Farsa (Italia)
  - Dramma giocoso (Italia)
  - Tragédie lyrique (Francia)
  - Comédie lyrique (Francia)
  - Opéra-comique (Francia)
  - Opéra-ballet (Francia)
  - Grand opéra (Francia)
  - Singspiel (area germanica)
  - Zarzuela (Spagna)
  - Teatro musicale da camera
  - Operetta
- Cantata (profana)
- Oratorio
- Musiche di scena
- Comédie-ballet (Francia)
- Musica classica indiana
- Musica classica giapponese
  - Gagaku
- Musica sperimentale
- Musica minimalista
- Musica puntillista
- Musica arcaicizzante

## **Musica folclorica**

La *musica folclorica*, alla quale ci si riferisce recentemente anche con il termine di *musica tradizionale* nel tentativo di escludere l'ampliamento che il termine "*musica folk*" ha avuto negli ultimi decenni, includendo anche molto materiale non prettamente tradizionale, è definita da caratteristiche quali:

- La trasmissione orale: La musica viene trasmessa e tramandata attraverso il canto, l'ascolto ed a volte la danza;
- Specifiche culturali: La musica deriva da particolari tradizioni, regioni e culture essendone parte integrante.

## **Alcuni generi di musica folk**

- Aak
- Bambuco
- Bluegrass
- Blues
- Calypso
- Musica celtica
- Musica gnawa
- Hillibilly
- Ragtime
- Tarantella

# Generi musicali

I **generi musicali** sono categorie convenzionalmente riconosciute che identificano i brani in base all'appartenenza ad una tradizione o specificità e convenzioni<sup>[1]</sup>

La musica può essere divisa in generi utilizzando differenti parametri, che rendono questo tipo di classificazioni controverse ed arbitrarie. Molti e differenti sono quindi gli approcci accademici al problema dei generi. Douglass M. Green, nel suo libro *Form in Tonal Music* suddivide i generi di musica rinascimentale in madrigale, motet, canzona, ricercare e danza. Secondo Green poi "Op. 61 di Beethoven e Op. 64 di Mendelssohn sono identici nel genere – entrambi sono concerti per violino – ma differenti nella forma. Tuttavia, *Rondo for Piano, K. 511* di Mozart, ed l'*Agnus Dei* del suo *Mass, K. 317* sono abbastanza differenti nel genere, ma sembrano essere molto simili nella forma."<sup>[2]</sup> Altri come Peter van der Merwe trattano i termini *Genere* e *Stile* come sinonimi, affermando che il genere dovrebbe essere definito come gruppo di brani musicali caratterizzati da un certo stile e un "linguaggio musicale di base"<sup>[3]</sup>. Altri come Allan F. Moore sostengono che "genere" e "stile" sono due termini ben distinti<sup>[4]</sup> Tutti i generi e sottogeneri musicali possono essere definiti da tecniche musicali, da stili, da contesti, dal contenuto e dallo spirito dei temi. Le origini geografiche sono a volte utilizzate per identificare un genere musicale, sebbene una singola categoria geografica comprenda spesso un'ampia varietà di sotto-generi.

Il grado di omogeneità formale e stilistica di tali raggruppamenti è molto variabile e diviene addirittura nullo nel caso di generi con alle spalle una lunga storia, quali la musica sinfonica o l'opera lirica. La loro identità si fonda piuttosto sul contesto sociale e ambientale a cui le composizioni sono destinate (il teatro, la sala da concerto, la discoteca, la strada, la sala da ballo, la chiesa, il salotto) e sulle diverse modalità con cui la musica si coniuga di volta in volta ad altre forme di spettacolo, arte o letteratura, quali il teatro, l'immagine, la poesia, il racconto.

## *Triangolo assiomatico: Colta, Popolare e Folclorica*

| Schema riassuntivo della divisione dei generi musicali <sup>[5]</sup> |   |                           |
|---|---|---------------------------|
| <b>Cultura alta</b>   | <b>Popular Culture</b><br>Cultura di massa, logiche di consumo  | <b>Folklore</b>           |
| <b>Musica colta</b><br>Avanguardia concettuale, classica              | <b>Popular music</b><br><b>Rock</b><br>Collegato alla tradizione blues, controculturale, underground anche sperimentale | <b>Musica folk-etnica</b> |
|   | <b>Pop</b><br>Mainstream di facile ascolto dipendente dall'industria discografica                                       |                           |

Una distinzione di base comunemente riconosciuta dalla musicologia, è quindi quella fra Musica folclorica, Musica popolare e Musica colta, visti come tre termini generici o macrocategorie che assieme racchiudono tutti i generi musicali, formando ciò che Philip Tagg definì come "triangolo assiomatico"<sup>[5][6]</sup>

A conferma dello stretto legame che intercorre tra genere musicale, ricezione e fruizione, negli ultimi decenni l'industria discografica ha spesso preferito, per ragioni commerciali, inquadrare gli interpreti entro singoli generi.

## Musica popolare

Con il termine *musica popolare* ci si riferisce a tutti quei generi musicali accessibili ad un pubblico generalista e largamente divulgati dai mezzi di comunicazione di massa. Il musicologo e studioso della musica popolare Philip Tagg ha definito la nozione alla luce di aspetti socio-culturali ed economici:

« La musica popolare, diversamente dalla musica colta è (1) concepita per la distribuzione di massa rivolta a gruppi di ascoltatori ampi e spesso socio-culturalmente eterogenei (2) vendibile e distribuibile in forme non scritte (3) esclusivamente possibile in una economia monetaria industriale dove si trasforma in una merce, e (4) nelle società capitaliste, soggette alla legge della libera impresa... in quanto deve essere idealmente il più possibile vendibile »

(Philip Tagg, *Analysing Popular Music*<sup>[6]</sup>)

La musica popolare si può trovare nelle stazioni radio più commerciali, nei rivenditori più popolari e nei centri commerciali, e nelle colonne sonore televisive o di molti film. I brani vengono spesso inseriti in classifiche di vendita, ed oltre al cantante, all'autore o al compositore, coinvolge il ruolo del produttore musicale, molto più di quanto non facciano gli altri due macro generi.

Chiaramente, le distinzioni fra musica colta e musica popolare appaiono spesso sfocate e con molti punti di contatto<sup>[10]</sup> come accade per la musica minimalista o per la musica classica leggera. In questi casi, la musica come altre arti effettua distinzioni imprecise, equiparabili alla categorizzazione che distingue il romanzo letterario dal romanzo popolare.



# MACRO ELEMENTI

**AUDIO  
(PA)**

ANALOGICI

DIGITALI

*SOSTEGNI*

**MIXER**

ANALOGICI

DIGITALI

*SOSTEGNI*

**LUCI**

*SOSTEGNI*

**AMPLIFICATORI  
-TESTATE  
(chitarra/basso)**

TRANSISTOR

VALVOLARI

**PEDALIERE  
(chitarra/basso)**

# TESTATE VALVOLARI PER CHITARRA



Jet City Amplification JCA22H Guitar Head guitar head, 5 x 12AX7 and 2x EL84 tubes, 20 Watt class AB thomann @ 16 Ohms or 2x 8 Ohms, footswitchable 2 channel, control for crunch & overdrive preamp, bass, middle, treble, crunch & overdrive master, presence; serielle effect loop, incl. footswitch, dimension W/H/ D 495 x 229 x 229mm, weight 10 kg



Marshall JVM410H guitar amp head - 100 Watt, 4 channel tube amp with 12 sounds switchable by footswitch or thomann MIDI. Programmable effects loop with hardware bypass, digital reverb, insert loop with hardware bypass, emulated DI out, MIDI in and MIDI thru. 5x ECC83 and 4x EL34 valves. Includes footswitch. Dimensions: 750 x 310 x 215mm. Weight: 22kg, dust cover optional (# 150488)



Marshall DSL15H guitar head - 15W, tubes: 4x ECC83 und 2x 6V6, 2 channels: classic gain & ultra gain, thomann independant volume & gain controls for both channels, classic tone control with bass, middle & treble controls, presence controls, tone shift switching, deep switch, pentode/triode switch, speaker outputs: 8 and 16 Ohms, incl. footswitch (channel select), weight: ca. 10,2 kg, dimensions (w x thomann h x d): 50,0 x 24,0 x 23,5 cm



Fender 65 Deluxe Reverb Head Blonde, Fender Special Run tube amplifier for electric guitars, 22 watts, 8 ohms, 2 thomann channels, controls for: volume, treble, bass, reverb, speed, intensity, 4 inputs (2 for every channel), speaker out, spring reverb, tube-vibrato, preamp tubes: 4 x 12AX7, 2 x 12AT7, power tubes: 2 x 6V6, dimension HWD 23,8 x 61x 22cm, weight 12,2kg, incl. cover

## TESTATE CHITARRA A TRANSISTOR



Marshall MG100HCFX, electric guitar head, 100 watts, 4 analoge channels, fully storeable, two effects can be used at thomann the same time - reverb und one of: chorus, flanger, phaser, octaver, vibrato and delay (4 delay modes: studio, tape, multi-tap, revers), separate delay adjustment, headphone out with speaker simulation, Mp3/line in, programable FX-loop (serial), programable damping (2xFDD styles), incl. 2-way footswitch, all thomann access with optional footswitch "STOMPWARE" (# 223005), dimensions: 591 x 249 x 275 mm, weight: 11,4kg, finish: carbon-kevlar



Product *Dimensions*, 39 x 35 x 78.6 cm.



DV Mark Micro 50, electric guitar head, 50W @ 8ohms / 60W @ 4ohms, solid state preamp, MPT (Mark thomann Proprietary Technology) power amp, 2 channels (clean/lead), controls (clean channel): level, bass, mid & high, controls (lead channel): level, drive, bass & high, reverb control, 2x 6,3mm jack speaker outputs (4 ohms minimum load), aux in, headphone out, xlr line out (with switchable thomann ground lift), voltage selector 120V/240V, footswitch connector for channel switch (not included), dimensions (w x h x d): 20 x 6,4 x 22,1cm, weight: 1,9kg



Dimension: (H) 22.5 x (W) 55 x (D) 25cm

## AMPLIFICATORI VALVOLARE CHITARRA



Marshall DSL40C Vollröhren Combo - 40W, 12" Celestion 70/80 custom speaker, tubes: 4x ECC83 & 2x EL34, 2 channels: thomann classic gain & ultra gain, independant volume & gain control for each channel, clean & crunch modes for the classic gain channel, lead1 & lead2 modes for the ultra gain channel, classic tone control with bass, middle & treble, presence control, tone shift thomann switching, variable resonance control, pentode/triode switch, digital-reverb for each channel, speaker outputs: 2 x 16 Ohms 1 x 8 Ohms und 1 x 16 Ohms, incl. footswitch (channel select and reverb on/off), weight ca. 23 kg, dimensions (w x h x d): 62,5 thomann x 49,0 x 25,5 cm, special made flightcase optional (# 299613)



Orange TH30C Valve Guitar Combo - 30W RMS switchable to 15W and 7W, 2 channels. Channel A: volume, shape, thomann gain. Channel B: treble, bass, volume. Valve driven FX loop (1x ECC81), external speaker output. Valve: 4x EL84 & 4x ECC83. 1x 16 ohm Voice of the World speaker. Dimensions: 470 x 510 x 280mm. Weight: 24kg



Marshall SL-5, full tube guitar combo, Slash signature combo, 2 channels, 5 watts, 1 x 12" Celestion vintage 30 thomann speakers, 3-band EQ with presence, 3 x ECC83 preamp tubes, 1 x EL 34 poweramp tube, digital reverb, poweramp switchable to 1 watts, 8 and 16 ohms speaker outputs, incl. footswitch, dimensions: 500 x 490 x 285mm, weight: 23 kg





Hughes & Kettner Tubemeister Box 212, 120 watt, 16 Ohms speaker cabinet, 2 x 12" Celestion Vintage 30 speakers, thomann dimensions: 750 x 490 x 285mm, weight: 19.5 kg.



Vox AC30 C2 electric guitar full-tube combo 3x 12AX7 (ECC83) preamp 4 x EL84 poweramp - 30watts, 2x 12 thomann Celstion G12M Greenback speaker, 4 Inputs High & Low (Top Boost & Normal), control for Normal Volume, Top Boost Volume, Treble, Bass, Reverb-Effect Tone, Level, Tremolo Speed & Depth, Tone Cut, Master Volume, Backside Output for external Cabinet x2 (Extension & External), FX thomann send FX Return, Switch for 8/16 Ohm, Footswitchjack (Tremolo and Reverb), Dimensions: 702 x 265 x 556 mm (WxDxH), weight: 32,2kg, footswitch optional (165749 VOX VFS2A or 198735 LEAD FOOT FS-2)



Bugera 212TS, e-guitar cabinet, power handling: 160 watts, 4/16 ohms mono or 2x 8 ohms stereo, plywood housing, 2x thomann 12 " TURBOSOUND speaker, reinforced corners, colour: black, 69,4 x 53,5 x 27,5 (cm), weight: 20,6 kg



Fender Mustang V 412 V.2 Guitar Speaker Enclosure, 4x12" Celestion Rocket 50 Speaker, 1x 4 Ohms Mono and 2x thomann 8 Ohms Stereo, 200 Watt/2x100Watt, Dimension HWD 77,47 x 76,2 x 31,8cm, Weight 35,3kg, incl. Casters

# AMPLIFICATORI CHITARRA A TRANSISTOR



Line 6 Spider Jam - 75watts, 1x 12" Celestion full-range speaker with 2" tweeter, Endless Jam Engine (over 100 thomann 'Endless Jams' played by LA studio musicians), 24 minute looper, XLR microphone input, second instrument input, SD memory card slot, 12x amp models, 36x presets (to be used with FBV Shortboard), 400x presets (200 song-based & 200 created by famous artists), LCD display, thomann FX processor (7 effects - 3 simultaneously), built-in tuner, headphone output with speaker simulation (can be used as a DI out), 3.5mm jack CD/mp3 input. Dimension (WxHxD) 250x220x150 mm.



Fender Champion 100 e-guitar combo, 2 channel, 2x12" special design speaker, 100 watt, control ch1 Volume, Treble, Bass, thomann FX Level, FX Select, Tap, ch 2 with control for gain, volume, voice, treble, bass, FX level, FX select, tap; effects reverb, delay/echo, chorus, tremolo, vibratone, in and outputs Aux1/8" jack Stereo, headphone 1/8" jack stereo, effect loop (preamp out, poweramp in black thomann bronco vinyl with silver grille cloth, dimension HWD 485x660x260mm, weight 18kg, footswitch included





Fender Mustang III V.2 Electric Guitar Combo - 100W, 1x 12" Celestion G12T-100 Speaker, 8 Ohms, 1 channel with 100 thomann presets. Controls: gain, volume, treble, middle, bass, reverb, master, data wheel, soft keys for amp select, stomp edit, modulation edit, delay edit, reverb edit, utility, save, exit, and tap/tuner. Dimensions: 45.1 x 52.1 x 27.3cm (H x W x D). Weight: 16.3kg. incl.



Roland Blues Cube Stage, e-guitar combo, 60 watts, 2 channels, 1x 12" speaker (open back), Tube Logic Design, thomann Dual-Tone-Mode to blend both channels, master volume control, 3-band EQ, Boost & Tone switch for both channels, Power Control (0,5 watts, 15 watts, 45 watts, Max.), USB-out for direct recording, footswitch out (footswitch is not included), built-in reverb, HI & LOW instrument input, thomann  
Dimensions: (W) 513mm x (D) 244mm x (H) 465 mm, Weight: 14 kg, suitable footswitch: # 173531 (footswitch not included)

# La testata 30 Watt (pedaliera)



## StompAmp brown:

- **Potenza di uscita:** 30 Watt RMS @ 8Ohm / 22 Watt RMS @ 16Ohm
- **Impedenza di ingresso:** 1MOhm
- **Jack input e Output :** 1/4 inch - 6,3 mm
- **Controlli:** Volume, Gain, Bassi, Medi, Acuti
- **Loop effetti:** Seriale – Send, Return
- **LED:** Power on
- **Dimensioni massime** inclusi pomelli (LPA, cm): 12,6 x 9,8 x 5,4
- **Peso (g):** 350

# AMPLIFICATORI PER CHITARRA ACUSTICA



Marshall AS50D acoustic soloist guitar combo - 50W digital chorus and reverb, 2 inputs, 1 mic input with phantom thomann power, 2x 8" speakers with horn. Dimensions: 542 x 416 x 261mm. Weight: 16kg. Footswitch optional (331362)





Dimension: 558 W x 406 H x 254 D mm.



Kustom Sienna 16 Pro, acoustic guitar combo, 16 watts, 8" Sienna speaker, 1/4" mic/line input and 1/4" guitar input, thomann 4-band EQ, reverb effect, external speaker out, headphone out, dimensions whd: 406 x 324 x 215 mm, weight: 8,5 kg

# TESTATE PER BASSO A TRANSISTOR



Markbass Little Mark III Bass Head - 500W/4ohm, 300W/8ohm, controls for gain, bass, low-mid, high-mid, treble and master thomann volume, variable pre-shape filter, vintage speaker simulator, line out, effects send and return. balanced XLR line out, lightweight & compact, rack-mounts optional (# 194574), dimensions: 7.1 x 27.6 x 25.6cm, weight: 2.9kg



Ampeg PF-500 Portaflex bass head, 500W @ 4 ohms, 300W @ 8 ohms, Dual JFET preamp, Class D poweramp, thomann compressor, adjustable, controls for gain, bass, mid, treble, volume, mid-tone control: 5-position, Ultra Hi/Lo boost, balanced direct out (XLR), pre/post EQ option, -40dB pad, ground lift, FX loop (FX send/return), adjustable mix, switchable via footswitch, audio in (f.e. MP3 player), headphone out, thomann 15dB input pad, Mute (switchable via footswitch), poweramp in, preamp out, tuner out, speaker outputs: speakon, jack, dimensions (HxWxD): 76,20 x 355,60 x 279,40 mm, weight: 5 kg



Gallien Krueger MB500 Bass Amp Head - 500W into 4ohms, 350W into 8ohms, active 4-band EQ, separate boost channel thomann dedicated volume control contour control, digital power supply and power amp, DI out with pre/post switch and ground lift, 2x Speakon outputs, headphone/line out, FX loop, tuner out, mute switch, limiter, incl. footswitch, rackkit optional (# 239184), dimensions: 28 x 4.5 x thomann 19.5cm, weight: 1.36kg



Mark Bass Multiamp stereo amp, head for bass guitar, stereo amplifier 2 x 500 watts at 4 ohms or thomann 1000 watts mono at 8 ohms, digital stereo preamp, 3 channels, controls for gain - presence - level - master, 3 band EQ with controls for bass - mid - treble, 12 amp simulations, 8 cabinet simulations, 8 microphone simulations, 300 factory presets, thomann 8 assignable slots per preset, 15 effects, tap tempo function, 3 output modes, chromatic tuner, midi capable slot for SD carts, headphone output, FX loop, lightweight (4.3 kg), rack unit (2U), incl. mounting brackets for rack mounting. Dimension (WxHxD) 483x89x324 mm.

## TESTATE PER BASSO IBRIDI



Dimensions: W 30,3 x H 19 x D 15,3 cm.

## PREAMPLIFICATORI BASSO



Dimensions: 128 x 72 x 60 mm (LxWxH)



Fishman Platinum Pro EQ, analog preamp for acoustic guitar & bass, class-A preamp, tone shaping: 5-band eq with thomann sweepable mid, adjustable low-cut filter, feedback control: sweepable notch filter and phase invert switch, +12db boost, balanced XLR DI out with pre/post EQ switch, integrated tuner, dimensions: 158mm x 143mm x 54mm, power: 9V battery or optional power supply (not included, #108096)



Two Notes Le Bass Dual Channel Preamp, 2 channel valve bass preamp with true high voltage design (200 Volt) thomann with fusion modus (cold & hot), sturdy metal housing, controls for channel A: gain/volume/bass/treble, controls for channel B: gain/sweep/volume/fusion/bass/mid/treble, headphone out with speaker simulation (switchable), switches for A/B/cold-hot, fusion/SPKR, SIM/ground lift, MIDI IN & OUT to use the preamp as controller for thomann f.e. TWO Notes Torpedo CAB (#283612), symmetric DI-OUT with ground lift, FX loop after EQ, THRU output to control an additional amp, incl. 12 VDC/500mA power supply, dimensions: 189x124x50mm, weight: ca. 1kg



Dimensions: 50,8 x 99 x 127 mm.

## AMPLIFICATORI BASSO A TRANSISTOR



Markbass Mini CMD 121P LM3, Bass Combo, 300Watt/8 Ohm, 500W/4ohm, 1x 12" neodym speaker and B&C custom made thomann tweeter, 45Hz-18KHz. BiBand Limiter, controls for volume, bass, low and high mid, treble, master volume and variable pre-shape filter. Vintage speaker emulator, line output, effects send and return, bass-reflex design (rear ported), ultra-light & ultra-compact. Dimensions: 38.3 x 43.2 x 35.8cm. Weight: 13.3kg thomann (optional Cover 241660)



Harley Benton HB-20B - 20W bass combo, 8" speaker, with 4-band EQ & headphone output. Dimensions: 37.5 x 33.5 thomann x 18cm, weight: 7,5 kg





TC Electronic BG250-208, bass guitar combo, 250W (ca. 175W without connecting an additional 8 ohms cabinet - not thomann included), 2x 8" speaker, 1x external speaker output (speakon), passive/active switchable, 3-band EQ, master control, TonePrint enabled (1 TonePrint slot), built-in tuner, mute switch, dimensions: 292 x 320 x 465 mm, weight: 11,75 kg



H x W x D (mm) 581 x 474 x 300



Kustom KXB100, basscombo, 100 watts, 15" Kustom speaker, 2 inputs (low/high), 4-band EQ, gain control, headphone out, aux thomann in, effect loop, XLR DI-out with volume control, external speaker out, dimensions whd: 476 x 597 x 381 mm, weight: 24 kg

## CABINET BASSO



Hartke 4.5 B XL Bass Cab, 4x Hartke XL 10" aluminium-cone bass drivers, 1x custom Hartke 5" aluminium cone thomann high-frequency driver, 400W @ 8 Ohms, frequency response: 30Hz - 12kHz. Dimensions: c.H 68 x W 60 x D 45cm. Weight: c.44kg



Ampeg SVT-212AV, cabinet for electric bass guitar, 600W RMS @ 4 ohms, 2 x 12" custom Eminence speaker, 1" thomann tweeter with 3 levels, solid 15mm plywood, bass reflex box, integrated handles, frequency response (-3dB): 71 Hz - 18 kHz, lowest frequency ( @ -10dB): 35 Hz, sensitivity: 99 dB SPL @ 1w/1m, dimensions (W x H x D) 610 x 635 x 406 thomann mm, weight: 30 kg



Markbass Standard 104HR-4 Ohm, Bass Cabinet, 4 x 10" Neodym Custom made Speaker by B&C, 1" HF compression driver thomann Tweeter , 800Watt/4Ohm, 35Hz - 20KHz, ultra light & compact Weight ca. 25,5kg, Bassreflex at the backside, Size b x h x t ca. 59,5cm x 60,5cm x 48cm





Ampeg SVT-810E bass cabinet - 8 x 10" Eminence speakers, 800W RMS, jack and speakon connections, 130 dB max thomann sound pressure, impedance: 4 ohms (switchable to 2 x 8 ohms biamp/stereo), frquency response 40 Hz- 5 kHz, low-end bass cabinet, dimesions: 121,92 x 66,04 x 40,64 cm, weight: 75 kg

## **CASE/PEDAL-BOARD CHITARRE**



Palmer MI Pedalbay 40, pedalboard, material: powder Coated aluminium, adjustable crossbars, adjustable hight, dimensions (h x w x thomann d): 70-85 x 450 x 305 mm, weight: 3,51 kg, incl. paded bag, ca. 2,5 m velcro, 2x elastic bands and allen key.



Thomann Effect Pedal Case Small, made of 7mm multiply wood, with Velcro mounting area, 22 x 22mm alu profile, thomann 4cm padding inside the top, 1x leather handle, 2 butterflys, steel corners, 4 rubberfeet, Made in Germany, dimensions: 60cm x 40cm x 9cm (up to app. 10 pedals)ext dimensions 65 x 45 x 18cm



Gator GPT-Pro, Pedal Tote, Pedalboard with Bag - 30" x 16" pedalboard, Velcro top, carry handle, slides into a thomann black 600-Denier nylon padded carrying case. Dimension (WxHxD) 762x64x419 mm.



Harley Benton PB5 pedal-board - plastic construction with headphone output and built-in 1W speaker, includes power supply (9V thomann DC, 1000 mA) for up to 5 pedals and patchcables, outside dimensions hwd: 110 x 680 x 375 mm, weight: 4kg

## MIXER ANALOGICI



Behringer Xenyx Q802 USB 8-channel mixer - 2 mic inputs with 48V phantom power and Compressor, 3-band EQ, 1 thomann aux send (post fade), peak LED, 2 stereo line inputs with 1 aux, 2-track in/out, USB Audio Interface, master Poti, external power supply. without Software, Dimensions 191 x 166 x 43 mm, Weight 1,1 kg



Behringer Xenyx X1204 USB - 12-channel mixer with 60mm faders, 4x mic inputs with 48V phantom power and 75Hz thomann lo-cut filter, compressor per mic channel, internal 24bit FX processor with 16x presets, 2x stereo inputs, 3-band EQ, USB interface, 2x auxes (pre/post), peak LED meter and mute on each channel, 2-track in/out, XLR main out, alt 3-4 outputs, internal power supply, includes thomann 19" rackmount abd USB cable. Dimensions: 97 x 270 x 328mm (HxWxD). Weight: 2.8kg. Optional case article no. 302917. Dimension (WxHxD) 195x50x248 mm.



Alto Live 1604, Professional 16-channel / 4-Bus Mixer, 10 XLR Inputs with DNA mic preamps, switchable phantompower, dynamik thomann compressor (channels 1-6), 3-Band EQ with sweepable mids, 4 aux sends; pre/post switching (sends 1+2), 60 mm fader with PFL/AFL solo function, USB audio link with level regulation, 100 Alesis DSP effects, balanced XLR, balanced / unbalanced 6,3 mm outputs, 9-Band grafic EQ thomann for main- and monitor outs, phones output with independent level regulation, Dimensions 492mm x 417 mm x 79 mm, Weight 5,9 Kg



Mackie Onyx 1620i Mixer - 8x mic/line inputs, 2x instrument inputs (DI), 4x stereo inputs, 8x inserts, direct out thomann per channel, 4-band EQ (2x parametric), 4x aux (pre/post switchable), phantom power switchable per channel, control room out, internal talkback microphone, FireWire option and rack kit available. Dimension (WxHxD) 270x97x328 mm.



Yamaha MG16XU, 16 Channel Mixer, 10 Mic Inputs with "D-PRE" Microphone pre amps with an Inverted Darlington Switching thomann circuit (XLR/1/4" Jack) with +48V Phantompower (Channel 1-8 with Compressor), 3 Band EQ with semi-parametric, High-Pass Filter and 26dB Pad Switch, built in FX with 24 Parameters, 4 Stereo Inputs (1/4" Jack) with 3 Band EQ, XLR Out, Group Bus Out, 4 Aux thomann for all Channels, USB with 2 Stereo In/Outputs (compatible with iPad version 2 or higher, camera connection kit is required) XLR Out, rackmount and Cubase AI DAW Download Code is inclusive, dimensions 444 x 130 x 500mm, weight 6,8 Kg

## **MIXER DIGITALI**





Mackie DL 1608 Lightning, Mixer Dock for Apple iPad, 16 Mic Inputs, 6 Aux, 4 Band EQ, Compressor, Gate thomann per channel, 31-Band-Grafik-EQ and Compressor/Limiter Outputs, Reverb and Delay, XLR Master Out, 1/4" Jack, with an additional Wi-Fi Router to be used wireless, Support up to 10 iPads, Visual Feedback, Preset and Snapshot Recall, PadLock fixed your iPad in the Mixer, Kensington-Lock, dimensions: thomann 394 x 292 x 99 mm, weight: 3,2 kg !!!!! Compatible with iPad 4 and iPad mini, optional matching cover 322025, Software in following Languages available, German, Spain, France, English, Mackie Master Fader" App for free - ready to use without DL mixer



Behringer X18, Digital iPad / Tablet Mixer X18, 18 Channels, 16 Midas Preamps, Built-In Tri-Mode Wifi Router, 18x18 thomann USB Interface for Recording, X32 Effektrack, Real Time Analyzer for all channels, ULTRANET connectivity for Behringer P-16 Monitoring, 6 Aux, Dimensions 409 x 357 x 110 mm, Weight 4,0 Kg

## **CASE MIXER**



Thon Case Mackie Onyx 24.4 - 7mm plywood with 30 x 30mm aluminium profiles, 10mm foam padding (minimum), 5x thomann handles, 4x butterfly latches, rounded steel corners, all outputs free. External dimensions: 87.5 x 65 x 28cm. Made in Germany.



Thon Mixercase - for Soundcraft MFX-20/2 or Soundcraft MPM-20/2. Manufactured from 7mm birch ply with 30mm aluminium profiles, thomann 1x leather handle, 2x butterfly latches, medium steel corners, 4x rubber feet, 10mm foam padded inlay. Dimensions: 729 x 145 x 445mm. Weight 8.1kg. Made in Germany.



Thon Mixer Case For Presonus Studiolive 16.0.2 - manufactured from 7mm plywood with 4x butterfly latches (medium), 30 thomann x 30mm aluminium profiles, 15mm foam padding, 3x handles. Dimensions 478 x 580 x 247 mm, Weight 9,0 Kg, Weight with Studiolive 16,2 Kg, Made in Germany.

## **CASE DJ**



Thon Mixer Case for Allen & Heath Xone: 92-92 Roary or DB4 or DB2, 7mm birch plywood with 25 thomann x 25mm aluminium profiles, 2x medium butterfly latches, rounded steel corners, space for cables on backside, 4x rubber feet, foam padding, 1x folding handle. Dimensions: 390 x 194 x 502 mm (WxHxD). Weight: 5.3 kg, made in Germany



Thon Case for Pioneer DDJ-SZ, suitable Case for Pioneer DDJ-SZ, 7mm Plywood, 22 x 22mm Aluminium Profile, foam thomann padding, 4 butterfly-catches, 3 handles, steel-corners, recessed castors, 6 rubber feet, 10cm place for cable, external dimensions WxDxH 942 x 575 x 185mm, weight 10,7, weight with DDJ-SZ 25,5 kg



Magma DJ Controller XDJ-R1 - transport case for XDJ-R1 controller, Heavy duty construction of 9 mm vinyl laminated thomann plywood, Dimensions external 430 x 700 x 210 mm, Internal 275 x 620 x 36 mm



Magma DJ Controller Workstation DDJ SX, Holds a Pioneer DDJ SX and Laptop, Incl. gliding laptop platform (removable), thomann Heavy duty construction of 9 mm vinyl laminated plywood, Solid aluminium profiles and spring loaded latches, Secure stacking due to stackable ball corners, Detachable front cover/panel, Full padded interior (5 cm) keeps Controller well-protected, Convenient cable access port, 2 fixing straps hold laptop thomann during transportation, Specifications (H/B/T) : external: 48,5 x 79 x 21 cm / Internal: 34 x 66 x 4,5 cm (Controller compartment)



Magma CTRL Case XDJ-RX, Fits Pioneer XDJ-RX, Lightweight Durashock molded EVA foam and polyester exterior shell, Incl. adjustable thomann foam kit to fit smaller models and to protect control knobs, faders and jog wheels, Sturdy zipper and comfortable carrying handles, Fits inside the MAGMA Rolltop Backpack, external dimensions (B/H/T): 75,5 x 45 x 15 cm Interior dimensions(B/H/T): 72 x 41 x 11 cm



UDG Digi Trolley To Go Black/Orange, upholstered compartment with space for 15" Laptop and Midi Controller ( Vestax thomann VCI 100), space for Audio Interface and headphone, two outside pockets with



mesh-bag for accessories, Pull-Out handle, detachable shoulder pad, integrated lock, dimensions (exterior) 355 x 520 x 290mm, (interior) 310 x 390 x 190mm, weight 3,75 Kg (U9880BL/OR)



Thomann DJ Bag 80 LPs - space for approximately 80 records, solid, water-resistant Rok Tex surface material, solid thomann metal strap hooks, 5mm padded lid, 10mm removable padding (Velcro fastening), 1 large front outside pocket with Velcro fastener, 2 smaller outside front pockets with zip, 2 side pockets with Velcro fastener, 2 robust handles with Velcro fastener, 1 detachable wide shoulder strap with thomann 30cm long padding and mobile phone pocket, pyramid feet. Internal Dimensions: 32 x 34 x 27cm.



Thomann DJ Bag CD MIXER BAG, for 2x Single CD Player (Top oder Frontloader Pioneer CDJ, Numark Axis Series, thomann American Audio, Stanton S-Series, Gemini CDJ, Vestax CDX-05, Denon S,...) + 1x Mixer (Numark DM, Gemini PMX...), Dimensions: 74 x 36 x 11 cm



Magma CTRL Case DDJ / Mixer, padded transport protection, water resistant, zipper, inside dimensions in cm HxWxD 40 thomann x 33 x 11, for 12 "mixer as Pioneer CDJ-2000, CDJ-900, XDJ-1000, Allen & Heath Xone 43C

**HARDWARE/CONTROLLER DJ**



Numark Mixtrack Pro III, 2-Channel DJ Controller for Serato DJ, All-new 5-inch high resolution metal jog wheels, Dedicated thomann filter knobs for each channel, Multi-function Touch Strip for dynamic FX control and Track Search, 100mm pitch sliders for fine pitch adjustments, Dedicated track browsing controls for your library, 16 multi-function performance pads, Integrated class compliant audio interface with 1/4-inch and 1/8-inch headphone thomann connections, 1/4" Microphone Input, Includes Serato DJ Intro Upgrade-ready for Serato DJ, Includes Prime Loops remix tool kit. Dimensions D: 239 mm L: 550 mm H: 49mm, Weight 1,5 Kg



Pioneer DDJ SX DJ2 Controller, Mixing with Serato, Dual Deck, Slip Mode, FX Mode, Multi FX Mode, Record Start thomann and Slot Buttons for Serato Flip Software expansion Pack, Performance Pads, Large Jog Wheels, 4-Channel Mixer, Aluminum Finish, Serato DJ Software, 2x CD RCA Inputs, Line Phono Input x 2 RCA, 2x Microphone Inputs (1x Combi XLR/6,3mm and 1x 6,3mm jack), 2x XLR/RCA MAster outputs, thomann Booth output, incl. Serato DJ Software, Dimensions 664 x 353,4 x 70,4 mm, Weight 5,8 Kg



Pioneer DDJ SB2, 2-channel performance DJ controller/mixer packaged with Serato DJ Intro software, 4 performance pads for Hot thomann Cue, Auto Loop, Manual Loop and Sampler, Large jog wheels for precise scratching and mixing capabilities, USB Powered with built-in sound card, RCA Audio Output, 487,0 x 271,2 x 58,5 mm, Gewicht 2,1 kg



Pioneer XDJ-1000, Fully MIDI-compatible Serato DJ HID, Integrated auto-standby function, music can be played via WiFi or UBS thomann directly Highly professional design for both work or at home or in the club, own setting and colour-coded USB port lighting, Advanced rekordbox track information for intuitive mixing and easy track selection, Professional features like the NEW Quantized Beat Jump and loop Move, thomann Faster searching and finding the right track with keyboard and keywords, Large full-color display with intuitive user interface, Usable media: iPhone / iPod touch, Android phone, etc., USB storage media (flash memory / HDD, etc.), computer (Mac / Windows PC) Playable file formats: thomann MP3, AAC, WAV, AIFF (iOS version of rekordbox : only MP3 and AAC), Supported USB storage file systems: FAT, FAT32, HFS + USB Ports: 1 x USB Type A, 1 x USB type B, Audio Outputs: 1 x AUDIO OUT (RCA), 1 x CONTROL thomann (3.5 mm mini-jack), Other Connections: 1 x LAN (100Base-TX), Dimensions: (W x D x H) 305 x 382.5 x 110 mm, weight: 3.3 k

## PA – AUDIO

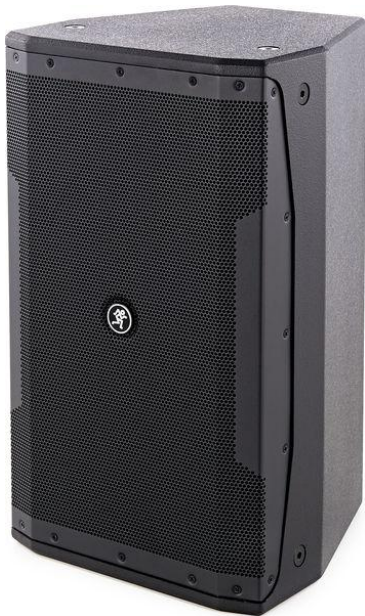
### DIFFUSORI PASSIVI FULL-RANGE



JBL JRX 215, fullrange-system, 15"/1", 250W RMS, 1000W peak, frequency range 40 Hz - 18 KHz, 8 ohms, 90°x50° thomann CD-Horn, speakon/jack in/out, sonic guard tweeterprotection, black carpet covered, 699 mm x 460 mm x 432 mm, 27.4 kg, optional matching cover 240351



EV ELX 115, Passive Multi purpose Speaker 15" woofer, 1,5" Compression Driver, Frequency, 50Hz - 20 kHz, 134dB Max, thomann 400W RMS 1600W Peak, 8 Ohms, 90° x 50°, pole mount, dimension 708 x 432 x 382, weight 23,0 kg



Mackie IP 10, Passivbox 2 Wege, 10" 2" 90°x50°, 200 W con./400 W programm, Frequenzbereich (-10 dB): 50 Hz thomann - 20 kHz, SPL max. 124db, Crossover frequency: 3 kHz, Impedance 8 Ohms, Abmessungen: HxBxT 520 x 310 x 340 mm, Gewicht: 11,8kg



B-Stock, HK Audio L5 112 F Linear 5, passive fullrange speaker, 1x 12"+ 1" Driver with 1,75" voice coil, thomann 500 Watt an 8 Ohms (1000 Watt Programm, 2000 Watt Peak), 70 - 18.000 Hz (+/- 3dB), 128 dB Max SPL, 2x Speakon NL4, asymmetric Horn with 60°- 90° x 55°, plywood/MDF housing with 3x M8 flying points (optional bracket 323585), DuoTilt pole thomann mount, 2 handles, black housing, dimensions (WxHxD): 370 x 668 x 365 mm, weight 23,3 Kg, B-Stock with full warranty, may have slight traces of use





Turbosound NuQ102, passive 10 "1" speaker, 300 watt con / 1200 watts peak, frequency range 50 Hz - 20 thomann kHz, beam angle 100 x 60, SPL 118 dB, M10 / M8 / M6 flying points Dimensions: (H x W x D) 525 x 318 x 258, 8 Ohms, weight 12.7 kg



the box pro Achat 215 - 2x 15" woofer + 1.4" neodymium HF compression driver, 700W RMS @ 4 thomann Ohms, 50Hz-16kHz, 132dB max SPL, 60° x 40° dispersion, Speakon connectors. Dimensions: 435 x 1200 x 450mm. Weight: 48.5kg, Engineered in Germany



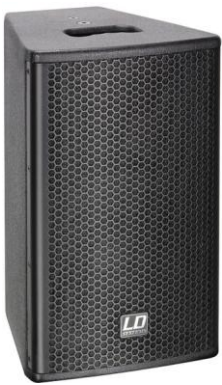
the box Classic Line 108 Top - 8" & 1" CD horn, 2 x 150 Watt RMS, @ 4ohm, thomann 115dB max SPL, frequency response: 100Hz-19KHz, 90° x 60°, SPK input, PU black coating, flange-socket. Dimensions: 280 x 415 x 250mm. Weight: 9Kg. Price per pair.



the box CL 108 MK II Top - 8" & 1" compression driver CD horn, 150 Watt RMS, 600 thomann Watt Peak, 4ohm, 115dB max SPL, frequency response: 100Hz-19KHz, 90° x 60°, SPK input, PU black coating, flange-socket. Dimensions: 280 x 415 x 250mm. Weight: 9Kg. Price per pair.



FBT J-Series J8, passiv Full Range Speaker - 8"+1" Driver, 160watt RMS, 8 Ohm, 65Hz-20.000 Hz, 90° x 60°, thomann wedge angles, 2x M5 flying points, 25mm pole mount, black plastic housing. Dimensions: 255 x 415 x 245mm. Weight: 6,6 kg, Optional cover 178863



LD Systems LDEB 82 G2 Stinger, passive 8" 1" Monitor/Fullrangelautsprecher, Eminence and BMS Driver, 8 Ohms, 200 Watt thomann RMS, 95 dB (118 dB SPL max.), 70 - 19.000 Hz, 2x Speakon, black plywood housing, 36mm polemount, dimensions 270 x 450 x 290 mm, weight 10 Kg



the box pro Achat 206, 2x 6" Woofer and 1" Tweeter, 250 W RMS / 1000 W Peak, 8 thomann Ohms, 119 dB Max, Frequency 70 Hz - 20 kHz, Dispersion 90° x 90°, Connectors 2 x NL4 and Binding Post, 36mm pole mount, Black finish, Dimensions 200 x 570 x 220 mm, Weight 12 kg, Colour Black, Engineered in Germany



the box pro Achat 104 - 4" woofer + 1" dome tweeter, 40W/8 Ohms (RMS), 160W/8 Ohms (peak), 109dB thomann maximum SPL, frequency response: 100Hz-20kHz, 90° x 90° dispersion, 2x NL4 connectors and binding post outputs. M6- threads, Inc. L Brackets, Dimensions: 144 x 146 x 214mm. Weight: 2.5kg. Colour: Black. Optional wall mount available (order code: 251424)., Engineered in Germany

## **DIFFUSORI ATTIVI FULL-RANGE**



Mackie Thump 12, 2-Way, Bi-amped active fullrange speaker, 1x 12" and 1,4" compression Driver, frequency range 50 Hz thomann - 23.000 Hz, 125 dB SPL max, 500 W Rms/ 1000 W PeaK, Dispersion 90°

x 60°, internal safety protection, XLR Mic/Line Inputs, 3-Band EQ, internal pole mount, 3 handles,  
Dimensions: 596 x 367 x 314 mm, Weight 13,2 Kg, optional bag 296045



Turbosound iQ12, 2 Wege Fullrange Lautsprecher, 12" 1", 2500 Watt Klark Technik Class D Poweramp, Digital Signal Processing, Frequency thomann range ( -10 dB ) 55 Hz - 20 kHz, Nominal Dispersion 80 x 60, SPL 123 dB, 2x combo jack/ XLR Input, Output A/B 2x XLR Linked to Input, Mixoutput XLR, Ultranet input/Link 2x RJ45, LCD Display, PC Remote Control, Dimensions 609x370x370, Weight thomann 21,1 kg



JBL Eon 615 - 15"+1" full range active PA speaker, 2-way bi-amped, 500/1000W (RMS/peak), 90° x 50° horn, 2x thomann mic/line input, 4 DSP Presets more features ajustable via Bluetooth (no audio via Bluetooth!), 47Hz-20kHz (-10dB), 127dB SPL max, black PVC construction, 36mm pole mount, 5x M10 flying points. Dimensions: 708 x 429 x 368mm. Weight: 17,7kg





B-Stock, the box pro Achat 404 A, Active 4 x 4" Woofer (Neodym) and 1" BMS Driver, Column Speaker, thomann 200 Watt Amplifier, 124 dB Max, Frequency 160 Hz - 20 kHz, Dispersion 150° x 30°, Polemount 36mm, Connectors XLR In and Output, Black Finish, Dimensions 144 x 166 x 692 mm, Weight 8 kg, optional matching cover 283124, Engineered in Germany, B-Stock thomann with full warranty, may have slight traces of use



JBL PRX 735, active fullrange speaker, 1x 15" 6,5" 1,5", 35 - 18.500 Hz, Class-D Crown-Amplifier with 1500 Watt thomann bi-amp, 136 dB SPL max, internal DSP Controller, black housing, 90 x 50°, switchable EQ, 2 channel Mixer, 2x XLR/Jack Combi Input, Aux LR Input, XLR male Thru out, Neodym-HF Speaker, switchable GND/Lift, 12x M10 flying points, dimensions HxWxD 953 x 445 x thomann 583 mm, 34,9 Kg





Behringer B112MP3, Active 12" 1" PA Speaker with Built-InMP3 Player, 1000 Watt Peak Power, Wireless-ready for Behringer digital thomann wireless system, two Mic/Line-Inputs, Integrated MP3 player with USB Port, 2-Band EQ, Line Out, Frequency range: 50 Hz bis 20 kHz, Pole Mount, Dimensions 568 x 342 x 270 mm, Weight 12,5 kg, optional cover 320858



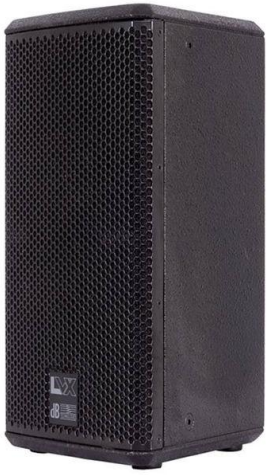
EV ZLX 12P, active 12" Speaker, 1000 Watt Class D Amplifier, 12" Woofer and 1,5" Compressions Driver, built thomann in DSP with Display, 55 Hz - 20kHz, 250 Watt Continuous 1000 Watt Peak Power, 95dB SPL, 126dB SPL max., 2x XLR/1/4" Jack Mic/Line Input, XLR Out, 90° x 60°, dimensions 610 x 356 x 356mm, weight 15,6 Kg, optional case 329285, optional cover thomann 318856



Mackie SRM 350 V3, Active Speaker 2 Way, 10" 1,4" 90°x45°, 500 W Rms/1000 W Peak, Frequency 50 Hz thomann - 23 kHz, SPL max. 126db, Feedback Destroyer, 4 Speaker Modes for different Voicings: PA, DJ, Monitor, Solo, 2x XLR/Jack and 1x RCA, dimensions: HxBxT 333 x 527 x 311 mm, Gewicht: 10,9kg



B-Stock, FBT J-Series J15a Active Full Range Speaker - 15"+1" Driver, biamped switched mode amp, 350W LF + 100W thomann HF RMS class-D, 48Hz-20kHz, 90° x 60°, internal DSP with 4 switchable EQ presets, wedge angles, XLR in/out, volume, 2x M10 flying points, 35mm pole mount, black plastic housing. Dimensions: 410 x 663 x 387mm. Weight: 14 kg, B-Stock with full warranty, may thomann have slight traces of use



dB Technologies L VX 8, Active Fullrangespeaker with Digital-BiAmplifier, 8" driver, 1" Horn with 90°x70°, 400 W/PRG, 200W/RMS, 24-Bit thomann DSP, 80 - 19.000 HZ, 121dB max. SPL, RMS & Peak-Limiter, Multiplex-Housing, 10 x M8 Rigging Point for Install, 35mm pole mount, dimensions 260x420x260mm, weight 10.1 kg



Line6 StageSource L2t, DSP powered multipurpose speaker with "side panel digital mixer" and with switchable presets for following thomann applications: FOH, Wedge, Playback Keyboard- or acoustic guitar amp, amp for a Multi-FX processor for Guitar, Guitar amp, 1x 10" 1", 128 dB SPL max, Bi-Amp mit total 800 Watt Class D/Class AB (655 x 175 W), internal DSP with alignment sensors, Feedback-Killer, thomann Line6 Link system configuration, internal Mixer, 35mm pole mount with internal Sensor, 5x M10 Thread, dimensions: 603 x 312 x 312 mm, weight 17,7 Kg



dB Technologies K70 - compact active speaker, 5" driver + tweeter, 50W RMS/100W peak, 101dB SPL max, 100Hz-16kHz, thomann 90° x 90°, XLR/jack in, stereo RCA in, soft-clip limiter, SN 120/130 pole mount option available (196744 , 196743) . Dimensions: 170 x 270 x 185mm. Weight: 3.5kg



the box pro TP 105 MA, Active Monitor speaker, 5" Woofer and a PP cone high frequency driver, XLR, thomann 6,3 mm Jack and RCA Inputs, M6 Flying points, Frequency range 70 Hz- 20kHz, 100 Watt RMS, Dispersion 60° x 90°, Dimensions 175 x 170 x 260mm, Weight 3,6Kg, optional stand 320824

## **SUBWOOFERS PASSIVI**



the box PA 18 ECO MKII, passive 18" Subwoofer with Built-in Xover, 425 Watt RMS / 1700 Watt Peak, thomann Speakon input and output to Top Out (mit Low Cut), M20 Stand flange, 100dB 1W/1m, 8 Ohms, Dimensions 600 x 650 x 650c mm, 41Kg



HK Audio Elements E110 Sub - passive 10" subwoofer from the Elements system, 250W/10 Ohms, 45-150Hz, 1x E-Connect pole thomann mount, Speakon in/out, E-Connect out, stackable. Dimensions: 36 x 48 x 46cm. Weight: 16.5kg



dB Technologies Arena SW 15 - passive 15" subwoofer with 3" voice coil, 500W (1000W program), 8ohm, 40-150Hz, 130dB thomann SPL max, internal crossover, M20 pole mount, optional blue wheels, Neutrik Speakon connectors. Dimensions: 470 x 600 x 600mm. Weight: 34kg



HK Audio L Sub 1200 Linear 5, passive Subwoofer , 2x 10" Woofer with 2,5" Voice Coil, 55 Hz thomann - XOver, 130 dB Max SPL, 600 Watt an 8 Ohm (1200 Watt Programm, 2400 Watt Peak), 2x XLR-combi Input, 2x XLR Thru, 2x XLR Mid/High out, switchable XOver Frequency 100/120 Hz, Plywood/MDF housing with 2x M20 stand adapter, 4 handles, black housing, thomann dimensions (WxHxD): 380 x 668 x 560 mm, weight 29,0 Kg,Note. NL4 are wired pins 2+ and 2- ONLY



the box pro TP 118/800 High Power Subwoofer - 600W RMS/2400W peak, 8 Ohms, 96dB SPL (1W/1m ), 129dB thomann peak, 35-150Hz (-3dB), optional wheels available (order code: 243578), 2x M20 pole mount. Connectors: 2x NL4 (1+/1-) + 2x NL4. Dimensions: 55 x 61.8 x 68 (W x H x D). Weight: 37kg. Finish: Black





JBL JRX 218S 18" passive subwoofer - 350Watt/4 Ohms, 96dB SPL, 133dB max, 34 Hz - 250 Hz, 2x thomann Speakon and jack connections. Dimensions: 605 x 508 x 501mm, Weight 32,2 kg

## **SUBWOOFERS ATTIVI**



the box Pyrit 112 Sub A, Aktiv High Power Sub 12" with 4" Voice Coil, 500 Watt RMS, 2000 thomann Watt Peak, 126 dB max., Stereo XLR/6,3 mm Jack Combi Input and Line Out, 1x M20 thread for pole mount, Black textured coating, Frequency 45 Hz - 150 Hz, Dimensions 460 x 520 x 400mm, Weight 24 Kg



RCF Ayra 10 Sub, Active Subwoofer, 250 Watt, 35 - 130 Hz, 10" Speaker, class AB Endstufe, XLR, 1/4" thomann Jack and RCA Inputs, dimensions 384 x 356 x 403mm, weight 18,5 Kg



B-Stock, the box Miniray Slave Sub, active slave subwoofer for the Miniray system, power output Subwoofer: 400 W RMS, thomann 800 W Peak, Frequency Response Subwoofer: 48 - 180 Hz Adjustable low pass filter: 80-180 Hz, switchable 180° phase, XLR/Jack combo input, XLR male out, mono slave subwoofer for extension of the miniray system, SPL Subwoofer: 96 dB (122 dB max.) : 345mm thomann x 470mm x 490mm weight: 18 kg, B-Stock with full warranty, may have slight traces of use



dB Technologies Sub 05D Active Subwoofer - 1x 15", 400watts (RMS), 800watts (peak) (Class D digipack), 129dB peak SPL, thomann frequency response: 30-150Hz, 2x XLR inputs, 2x XLR parallel outputs, 100Hz mono/stereo crossover, dynamic soft-clip limiter. Dimensions: 490 x 520x 615 mm. Weight: 29,5 kg.



Solton AART 15, active 15" subwoofer with internal digital amp, 500/1000 Watt, 45 - 150 Hz, 4 Ohm, XLR thomann in/out, M20 threadadapter, 2 handles, 4 wheels, dimensions Sub: 440 x 650 x 590 mm, weight 37 Kg, Optional cover 263344



HK Audio Premium PR:O 210 Sub A – active 2x 10" sub (bass reflex), 600W class D amplifier, 40Hz-150Hz, thomann 101dB SPL (123dB max.), 2x M20 pole mounts, 2x handles, 2 XLR combi line inputs, XLR through and mid/high output, black housing. Dimensions 36 x 61 x 53cm. Weight: 27kg



FBT Vertus CLA 208 SA, Aktiv Subwoofer 2x 8" with 2" voice coil, frequency 50 - 150Hz, 600 Watt thomann RMS / 1200 Watt Peak, 129dB SPL max., XLR and Powercon In and Outputs, dimensions 550 x 270 x 500mm, weight 20 Kg, colour black



B-Stock, Line6 StageSource L3s, DSP powered Subwoofer for the StageSource Series with switchable Presets for following applications: PA-Reference, thomann PA High Punch, DJ extended Bass and DJ Ultra Bass, 2x 12", 34 - 910 Hz (+/- 3dB), Bi-Amped with total 1244 Watt (2x 622 W Class D), 3 Low Pass frequencies: 80 Hz, 100 Hz and 120 Hz, Line6 Link system Link, switchable thomann Phase Reverse, M20 speaker connection, dimensions (H x W x D): 867 x 419 x 591 mm, weight 37,5 Kg, B-Stock with full warranty, may have slight traces of use



JBL EON 618 S, active Subwoofer, 18" reflex housing, 31 - 150 Hz, Class-D amplifier with 500 / 1000 thomann Watt ( RMS / Peak ), 134 dB SPL max, internal DSP Controller, black housing, 2x XLR Input, XLR male Thru out, M20 stand adapter, dimensions HxWxD 582 x 668 x 645 mm, 35,5 Kg



HK Audio L Sub 1200 A Linear 5, active Subwoofer with internal 1200 Watt Class D Amp, 2x 10" thomann Woofer with 2,5" Voice Coil, 55 Hz - XOver, 128 dB Max SPL peak, 2x XLR-combi Input, 2x XLR Thru, 2x XLR Mid/High out, Speakon out for a passive L Sub 1200, switchable XOver Frequency 110/120 Hz, Plywood/MDF housing with 2x M20 stand adapter, thomann 4 handles, black housing, dimensions (WxHxD): 380 x 668 x 560 cm, weight 30,7 Kg



Behringer B1200D Pro 12" Subwoofer - Eurolive-Series, 500W RMS Class D digital amplifier, internal peak limiter, 45-180Hz, 122dB thomann SPL max, internal crossover for mid/high speaker, tuneable and switchable low boost with phase switch for ultra-low frequencies, switchable high cut, adjustable sub volume, power/signal/clip LEDs, pole mount, 2 handles. Dimensions: 432 x 375 x 423mm. Weight: 19,5 Kg

# LUCI

## Luci LED bar



Stairville LED Bar 240/8 ° 30 RGB DMX, LED flood bar fitted with 240x 10 mm LEDs. The LED thomann Bar 240/8 is ideally, Suitable when it comes to the colour and light design on stage, in Clubs, bars, etc Eight individual segments allow the LED bar to be controllable easily to create varied and very dynamic Surface effects. The RGB colour mixing thomann ensures, that the color tones are virtually limitless. By the LED display, all important functions can be setup and recalled easily, Specifications: Light Source: 240 pcs. Ø 10 mm LEDs (96 red, 72 green, 72 blue), 8 Control segments, Angle: 30 °, Power supply: thomann AC90V/240V, 50Hz/60Hz, max. power consumption: 25 W, Control: DMX 512 (2, 3, 5, or 24 channels),, Master / Slave, Auto Run (internal programs), Sound-to-Light (via built-in microphone), Static Colour, Connections:, DMX Input and output: 3-pin XLR power input and output: IEC (IEC), thomann ambient temperature: -10°C - +40°C, material: aluminum application, incl. 2 pcs short bracket & 2 pcs. long bracket, Dimensions: 1084 x 65 x 88.5 mm, **Weight: 2.6 kg**



Eurolite LED Bar 2 RGBA 252/10 Black 40° - operable in stand-alone mode or DMX512 via any commercial DMX thomann controller (occupies max19 channels). 4, 6 or 19 DMX channels selectable for numerous applications. Sound-control via built-in microphone. Easy addressing and setting via control panel with LCD display and four operating buttons. Functions: Static colours, RGBA colour blend, internal programs, dimmer and thomann strobe settings via DMX, master/slave. Equipped with 252x 10mm LEDs. Locking possibility via mounting bracket. Includes power cable and safety plug. Also available in 20° beam angle. Dimensions: 1075 x 65 x 90 mm





Stairville Show Bar Tri LED 18x3W RGB. Multifunction Effect LED spotlight fitted with 18 x 3W Tri Color LEDs. , thomann The Show Bar Tri combines a variety of different effects, such as Floodlight , pixel effects etc. in a compact, 1 -meter long housing . The bar can be easy controlled via DMX 512 DMX in different modes , or can be operated without thomann in automatic stand-alone mode. The internal programs are available in both the DMX and in standalone mode. In DMX mode, each LED can be controlled separately with RGB colour mixing. Whether on stage, in a club , pub , or exhibitions and thomann gala 's, the Show Bar , TRILED is an eye-catcher ! As well due to the unit operating without a fan it is safe to use in the theaters and opera houses where low level noises are disturbing Specifications: Light source: 18 pcs thomann 3W Tri Colour RGB LEDs ( individually controlled ) , beam angle : to access about 23 ° , Fanless operation , LED display with 4 keys of all functions , robust and well-designed metal housing , 3 mounting brackets for attachment to wall thomann , trusses or on the ground (1 verschiebarer bracket , therefore the bar can be vertically or horizontally mounted on the traverse) , control: DMX 512 mode ( 2 , 3 , 5 , 7 , 18 , 27 or 54 channels ) , sound-to- Light Mode ( thomann with adjustable sensitivity and selectable channels, automatic mode with various programs and adjustable speed, master / slave mode , DMX A- and output : 3-pin XLR power supply: . 100 - 240 V ( AC ) , 50/ 60 Hz , max power consumption . thomann 84 watts, power input and output : IEC ( IEC socket and socket ) fuse: 2.0A / 250V, dimensions: 108 x 12 x 13 cm ( without bracket ) **weight: 4.96 kg**



Showtec UV LED Bar 100cm 18x3W, UV LED Bar 100cm 18x3W. The UV LED Bars create an blacklight effect thomann with LEDs. They are available in the standard 100cm and 50cm lengths. The UV LED bars are high power, less fragile then the conventional tubes and have a long life time. Specifications: LED Quantity: 18x 3W, Driver Current: 680mA, Electrical: Input Voltage: 100~240VAC...47/63Hz, thomann Power consumption: 60W max @FO, Physical: Dimensions: 1000 x 60 x 115mm, **Weight: 2.30kg,**



## Luci LED PAR



The ADJ Mega QA Par38 is a small and compact, low profile par designed for wall washing, uplighting or thomann stage lighting and will bring color and excitement to any party. This wash fixture is intelligently designed so that it may sit directly on the ground or inside truss without the hanging bracket because the power & DMX Ins and Outs sit on thomann the side of the fixture, not on the rear. The Mega QA Par38 is powered by 3x 5-Watt, Quad 4-IN-1 LEDs (RGBA - Red, Green, Blue & Amber) for smooth color mixing, has a 25-degree beam angle, and offers 6 DMX Channel modes for a thomann variety of programming options. Users control this fixture via it's own sound active internal programs, a DMX Controller or use the ADJ LED RC 2 wireless remote (sold separately). Specifications: Ultra bright flat Par 38 wash fixture with 3x 5W Quad 4-IN-1 LEDs, thomann Smooth RGBA (Red, Green, Blue & Amber) color mixing (fast or slow color change operation), Intelligently designed power & DMX Ins/Outs sit sideways so the unit can be set flat on the ground or set inside truss, Great as an architectural wall wash thomann or for performance stages where traditional stage lighting emit a lot of heat onto performers, 8 DMX Channels: 1, 2, 3, 4, 5, 6, 7 or 8 channel, 6 Operational modes: Auto mode and sound active feature with built-in programs, Stand Alone or Master/Slave thomann Configuration, Beam Angle: 25 degrees, 4-Button DMX LED Display, 16 built-in Color Macros, DMX-512 protocol, LED Pulse and strobe effect, Linkable via 3-pin XLR cable, Electronic Dimming: 0-100%, Includes dual mounting brackets (Scissor Yoke) to hang on truss, mount on a wall or thomann set on the ground, Long Life LEDs (50,000 hrs.), Power Draw: 20W Max, IEC AC input and output on rear to daisy chain power (Up to 30 Mega QA Par38's), Compatible with ADJ LED RC 2 wireless infrared remote control up to 30 ft./ thomann 10M (sold separately), Multi-voltage operation: AC 100V-240V 50/60Hz, Dimensions (LxWxH): 202 x 195 x 92mm, Weight: 1.1 kg.



Stairville LED Flood Panel 150 40 ° RGB, the LED Flood Panel 150 is a very space-saving and efficient thomann LED Floodlight with 150x 10 mm diameter LEDs . The panel can be controlled via DMX and can also operate in standalone mode. The very compact design allows you to place LED Flood Panel 150 almost everywhere where you need something thomann to be illuminated. Through the multi-function mounting bracket the Flood Panel can be mounted both on the ground or hanging up. Technical data: Power supply: AC 240V, 50Hz, max. Power consumption: 18 watts, viewing angle: Set to display the functions and the DMX thomann address, DMX mode, Master / slave mode, auto run mode, sound-to-Light: Dispersion 40 ° , DMX input and output: 3 pin XLR, control Mode, Dimensions: 260 x 68 x 210 mm, Weight: 1.8 kg



ADJ FLAT PAR QA12XS, Take your color mixing to the next level with the ADJ Flat Par QA12XS professional thomann "low profile" LED fixture. It features twelve 5-Watt QUAD LEDs (4-in-1 RGBA) with smooth RGB color mixing as well as a true amber LED to get the hard to achieve orange and amber hues. The units "low profile," sideways power & DMX Ins/Outs thomann and dual hanging brackets make it ideal for mobile entertainers, permanent installations and for inserting into truss or for uplighting., The Flat Par QA12XS has 8 different DMX channel modes, and may also run in Sound Active or Master/Slave modes. Users can also go thomann "wireless" with the ADJ LED RC2 wireless remote (sold separately). This LED fixture also features: 15 Color Macros, Electronic Dimming (0-100%), IEC AC IN and OUT on rear to daisy chain power and a 25-degree beam angle. The Flat Par QA12XS LEDs are thomann rated at 50,000 hours, and only draws 80-Watts of power per fixture., Specifications:, - Ultra bright slim fixture with 12x 5-Watt QUAD LEDs (4-in-1 RGBA- Red, Green, Blue & Amber), - Unique "sit flat" design" Power & DMX Ins/Outs are intelligently designed so thomann the unit can be set flat on the ground or set inside truss, - Great for performance stages where traditional par cans emit a lot of heat onto performers, - Low profile case design, - Wireless infrared remote control up to 15 ft./4.5M (Model: thomann ADJ LED RC2 - sold separately), - 8 DMX Channel modes: 1, 2, 3, 4, 5, 6, 7 or 8 channel modes, - 6 Operational modes: Manual Color Mode; Color Change Mode; Color Fade Mode; Auto (Program Run) Mode; Sound Active Mode and DMX-512 thomann Mode, - Smooth RGBA color mixing (fast or slow color change operation), - QUAD LED (4-in-1) projects no RGB shadows, - 15 built-in Color Macros, - Color strobe effect, - Flicker Free, - Electronic Dimming: 0 - 100%, - Beam angle: 25-degree, - thomann Linkable via 3-pin XLR cable (In/Out), - 4-button LED DMX display on rear panel, - Dual bracket yoke allows fixture to be hung or set on the ground, - IEC AC IN/OUT outlets on rear to daisy chain power (up to 7 units), - Includes thomann gel frame for optional diffusion filters, - Run all night – No duty cycle, - Long Life LEDs (50,000 hrs.), - Power Draw: 80W max, - Multi-voltage operation: AC 100-240V, 50/60Hz (IEC power In/Out), - Dimensions (LxWxH): 328x280x115mm, - Weight: 3.2 kg.



B-Stock, Stairville Quad Par Profile 5x8W RGBW, Flat PAR with 5x 4in1 QCL LED. A sleek design produces rich-strong thomann colours as well as great tones in pastel colour range - These are the highlights of the Quad PAR Profile. The compact size allows the Quad Par Profile to be mounted almost anywhere on trusses, pipes and many others.. The 8W Quad Colour thomann LEDs produce a high output and any colors you can be created. The stylish metal housing makes the Quad Par Profile an ideal solution for bands, clubs, bars, theaters, entertainers, artists, etc. Specifications: Light source: 5 pcs 4in1 8W, RGBW LED,, apx. 9000 Lux thomann @ 1 m (RGBW) Beam angle: 25 °, control: DMX 512 (4, 6, or 8 channels), fan cooled, Sound-control via built-in, microphone (sensitivity controlled), automatic mode, Master / Slave, connections: XLR input and, output: 3-pin XLR power input and output: IEC (IEC connector) thomann power supply: AC 100-240V, 50/60 Hz, max. power consumption: 32 W, incl. folding double-brace bracket for mounting on truss, or simply placing on the floor, Dimensions: 164 x 164 x 105 mm (255 x 235 x 105 mm with bracket), Weight: 2,1 kg, thomann B-Stock with full warranty, may have slight traces of use



Cameo Flat PAR Can RGB 10 - 144 x 10 mm FLAT LED RGB PAR Spot light in black thomann housing with IR-remote control capability. The Cameo CLPFLAT1RGB10IR is a flat and lightweight PAR light with RGB colours and 14° beam angle providing a variety of functions and lighting effects. A total of 144 large extremely powerful 10 mm LEDs provide rich and thomann radiant colour mixing while convection cooling allows for noise-free operation. The compact black ABS enclosure of the CLPFLAT1RGB10IR incorporates adjustable twin brackets, DMX input and output on XLR connectors and IEC power connectors for daisy chaining up to 10 units. The Cameo CLPFLAT1RGB10IR thomann features IR remote control capability, 4 DMX modes, sound control and a display with mode, enter, up and down keys. It can be used as master, slave and standalone, and at 15 watts only the unit's power consumption is extremely low. An IR remote thomann control is available as accessory. Type: Flat PAR, Colour Range: RGB, Number of LEDs: 144 (48x Red, 48 Green, 48x Blue), LED Type: 10 mm, Beam Angle: 14°, DMX Input: XLR 3-pole, DMX Output: XLR 3-pole, DMX Mode: 2-channel, 3-channel-1, 3-channel-2, 6-channel, DMX thomann Functions: Colour Fade, Colour Jump, Master Dimmer, RGB, Sound, Control, Strobe, Standalone Modes: Colour Jump, Colour Fade, Slave Mode, Sound, Control, Static Colour, Colour Macro, Controls: Mode, Value Down, Value Up, Enter, Indicators: LED Display, Power Connector: IEC connector male/female, Housing Material: thomann ABS, Housing Colour: Black, Type of cooling: Convection, Illuminance (lx 1m): 5400 lx, Dimensions (without mounting bracket:) 180 x 175 x 115 mm



Showtec Compact Par 18 MKII Black, Compact Par 18 MKII Black is a compact but powerful fixture. It is equipped with 18x 3-in-1 RGB LED's combined with high efficiency optics ensuring perfect performance in any circumstance. The Compact Par 18 MKII is equipped with IEC input and output for easy power linking. The compact aluminium structure makes this unit very suitable for use in venues with a limited space or as truss-warmer. Specifications: Output: Lux @1m: 9600, Lux @2m: 4170, Max Distance: 10m, Light Source: LED System: 18 x 3W RGB-in-1 LED, LED Color: RGB, Drive Current: 350mA, Refresh rate: 7,8 KHz, Electrical: Power Supply: 100~240VAC...50/60Hz, Power Consumption: 60W @FO, Control: Control Protocol: DMX, DMX channels: 1,3,4,6, Optical system: Beam Angle: 28 degrees, Physical: Dimensions: 256 x 285 x 96 mm, Weight: 3 kg, housing: Extrude Aluminium, Color: Black, Powdercoated, Fixture Connections: 3 Pole DMX, Cooling: Convection, Safety: Operation temperature: -5 - +40 degrees Celcius, Environment: IP-20, Dimensions: 250 x 290 x 96 mm



The Showtec Compact Par 7 Tri is a unique designed and compact but powerful parcan fixture. It offers full 3-in-1 RGB color-mixing ensuring vivid colors with a perfect color-mix. Due to its compact design it saves a lot of space for transportation and also in use. The Compact Par 7 has full digital addressing and offers both DMX control and sound to light function. For small applications the Compact Par 7 Tri has also a Master Slave modus. Specifications: Output: Lumens: 1540, Lux @2m: 2230, Max Distance: 20m, Light Source: LED System: 7 x 3-in-1 LED, Drive Current: 350mA, Refresh rate: 3.9KHz, Electrical: Power Supply: 100-240V AC, Power Consumption: 50W, Control: Control Mode: DMX512, DMX channels: 3,4,8, Optical system: Dimmer: 0-100%, Strobe: 0-20Hz, Beam Angle: 40°, Physical: Dimensions: 290 x 275 x 115 mm, Weight: 2,6 kg, Housing: Aluminum and iron, Color: Dark grey and Black, Power Connectors: IEC, Data Connectors: XLR 3pole, Cooling: Aluminum heat sink, Safety: Operation temperature -20~40°C,



B-Stock, Eurolite LED ML-56 black QCL RGBW/RGBA 18x8W, LED ML-56 QCL RGBW/RGBA 18x8W black. Equipped with twelve 4in1 thomann LEDs in the colors red, green, blue and white and six in the colors red, green, blue and amber, Through the close chip placement of the multichip technology, an exquisite color blend, even with short distances to the illuminated surface, is guaranteed, Operable in thomann Stand-Alone Mode or DMX standard, Functions: Static colors, RGBAW color blend, color change, color fade, internal programs, dimmer and strobe settings via DMX; Master/Slave, 3, 5, 7, 8 channel DMX mode selectable, Sound-control via built-in microphone, Comfortable addressing and setting via control thomann panel with LED display and three operating buttons, Easy installation, Locking possibility at the mounting bracket, Ready for connection via power cord with safety plug, DMX512 control possible via any commercial DMX-controller, Technical specifications: Power supply: 230 V AC, 50 Hz, Power consumption: thomann 190 W, DMX-control-channels: 3/5/7/8, DMX-512-connection: 3-pin XLR, Sound-control: via built-in microphone, Type of LEDs: 8 W QCL, Number of LEDs: 18, Beam angle: 18°, Dimensions (LxWxH): 240 x 300 x 310 mm, Weight: 5 kg., B-Stock with full warranty, may have slight traces thomann of use

## Set LUCI LED



Cameo CLMPAR3 - Multi Par 3, 28x8W quad color LED lighting system with transport bag. The cameo is CLMPAR3, thomann a particularly compact and flexible lighting system for professional demands with maximum brightness and perfect, RGBW color mixing. Features: Light source: 28 pcs 8W Quad color LED (7 pieces per panel), Beam angle: 25 °, Color range: RGBW, DMX input and output: 3-pin thomann XLR, DMX mode: 4, 6, 8, 9, 16 and 21 channels driven,, Standalone modes: Program mode (Static color, color change, color fading ...), Sound Mode, Slave, Auto Run, dimmer, Fashion, LCD display with 2 x 16 characters, including IR remote control, illumination intensity thomann 1m (each LED element): 6400 lux, Power supply: 90-250 V AC Power consumption: max. 210 W, power supply: Neutrik PowerCon In / Out,, Switchable Outlets: 2 x power plug Dimensions: 1030 x 290 x 100 mm, weight: 10 kg, optional floor Control: # 321076





Eurolite LED KLS-2500 Compact Light Set, LED KLS-2500 Compact Light Set. DMX LED spotlight set with 28 pentacolor thomann LEDs (RGBAW) for mobile use. Technical Specifications: Power supply: 100-240 V AC, 50/60 Hz, Power consumption: 190 W, DMX control channels: 2/3/4/7/20/23/28, DMX512 connection: 3-pin XLR, QuickDMX connection: 5-pin XLR, Sound-control: via built-in microphone, Type of LEDs: 10 W PCL (RGBAW), Number of thomann LEDs: 28, Beam angle: 28°, TV spigot: D = 28 mm, Dimensions (LxWxH): 1160 x 60 x 320 mm, Weight: 12 kg, Energy efficiency class: O, Rated power: 280.00 W, Energy consumption: 280.00 kWh/1000h,



Dimensions (W x D x H)  
1195 mm x 70 mm x 295 mm



Stairville LED Par CLB2.4 Compact system with 432 LEDs on 4 Flat-Pars. The CLB2.4 sets new standards in thomann functionality, Quality and price. with a total of 432 Ø 10 mm LEDs, the CLB2 provides plenty of light output and many colours for on-stage at the club and in countless other applications. Due to the many control options the CLB2.4 is a light tool thomann for every application! Whether simply using the optional infrared remote control (# 354223) or floor control module (# 279058), with DMX 512 for professionals or in automatic "Stand Alone" mode. The compact size and low weight the CLB2.4 used almost everywhere. Specifications: Light thomann source: 4 x LED Panel with each 108 Ø 10 mm LED's and RGB colour mixing, beam angle: 30 °, Control: DMX 512 mode (2, 3, 4, 7, 8 or 14 channels), automatic mode with many pre-programmed running lights and effects programs, floor remote thomann control (optional # 279058), infrared remote control (optional # 354223), stand-alone function with music mode, DMX input and output: 3-pin. XLR power input and output: IEC (IEC) Power supply: AC 100V-240V, 50/60 Hz; max. Contain 5.6 kg, carrying bag included, power consumption: 50 thomann Watt, tripod adapter: Ø 36 mm (matching stand: 287838), dimensions: 1007 mm x 305 mm x 63 mm



## BORSE/CASE CHITARRA



Thomann E-Bass Gigbag Deluxe, 20 mm padding (Expanded Polyethylene - Heavy Duty Industrial Padding), padded shoulder strap, back thomann pack option, 3 external pockets, internal dimensions: approx. 125 x 38 x 8cm



Thomann Acoustic-Steel Gigbag BK, Standard Western Guitar gig bag, padded (20mm), reversible back, metal fittings, outside pockets, internal thomann size approx. 111x42x13cm, Color Black



Thomann E-Guitar Gigbag Premium BR- water-resistant gig bag for electric guitar, Leatherex material, extra-firm 30mm high-density industrial padding, thomann four external accessory pockets, hide-away backpack straps, hook and loop neck fastener with cushion, side carrying strap with heavy metal fittings, neck and bridge protection. Internal dimensions: total length: 106cm, lower width: 36cm, upper width: 32cm, depth: 9cm. Colour: Brown



Thomann WESTERNGITCASE, Western guitar case, also to use for super-shallow-bowl roundback guitars, approx. internal measurements: 106 x 41 thomann x 15.5cm, weight: ca. 5kg



Gator GW-Jag Guitar Case, e-guitar case for Jaguar/Jazzmaster style guitars, rugged plywood construction, plush lined foam padded interior thomann with storage compartment, lockable, chrome-plated hardware, inner dimensions: body length: 495 mm, body height: 83 mm, width 368 mm, overall length: 1067 mm, Exterior Dimensions, Length: 1092 mm, Width: 394 mm, Height: 108 mm, colour: black



Thomann electric guitar case, oblong, fits ST-style/T-style/double cut guitars (not single cut guitars). Approx internal dimensions: 102 cm, thomann Breite: 33 cm, Höhe: 9 cm, weight: ca. 5kg exterior *dimensions*: 105 x 41 x 13,5 cm

## BORSE/CASE BASSO



E-Bass Gigbag Eco, standard size. Approx. internal dimensions: 118 x 36 x 8cm



Gator G-PG Bass Guitar Bag, ProGo Ultimate series, professional bass guitar gigbag, front and side handles, removable and thomann adjustable backpack straps, micro-fleece interior, internal block Shock Absorber, ultra thick paddes, Tablet-compartment, big accessory compartment with cable management and 3 internal compartments, inner dimensions: body length: 533 mm, body height: 89 mm, lower bout width: 381 mm, middle bout width: 305 mm, thomann upper bout width: 330mm, overall length: 1194 mm, weight: ca. 3,2kg, incl. rain cover, colour: black



Protec Contego Bass Case-light-weight CTG 233, ultra-strong, water resistant ballistic nylon, heavy gauge extra large zippers and backpack thomann straps that are adjustable for superior comfort and convenience. Dimensions: 43 x 125 x 13cm. Weight 3.632. Finish: Black



Thomann electric bass guitar case - approx. inside measurements: 117.5 x 34 x 8.5 cm, weight: ca. 5,6kg

SAAD  
Scuola di Ateneo Architettura e Design "Eduardo Vittoria"

**Università di Camerino**

Corso di laurea in Disegno Industriale e Ambientale  
A.A. 2015/2016

Studente: Luigi Di Paolo  
Relatore: Prof. Andrea Lupacchini



scenografia/stage  
evento musicale



(c) ShowTechies - Simona Braga

## strutture esistenti/americane





strutture/sostegni minori (gruppi musicali piccoli)



problemi/aspettative

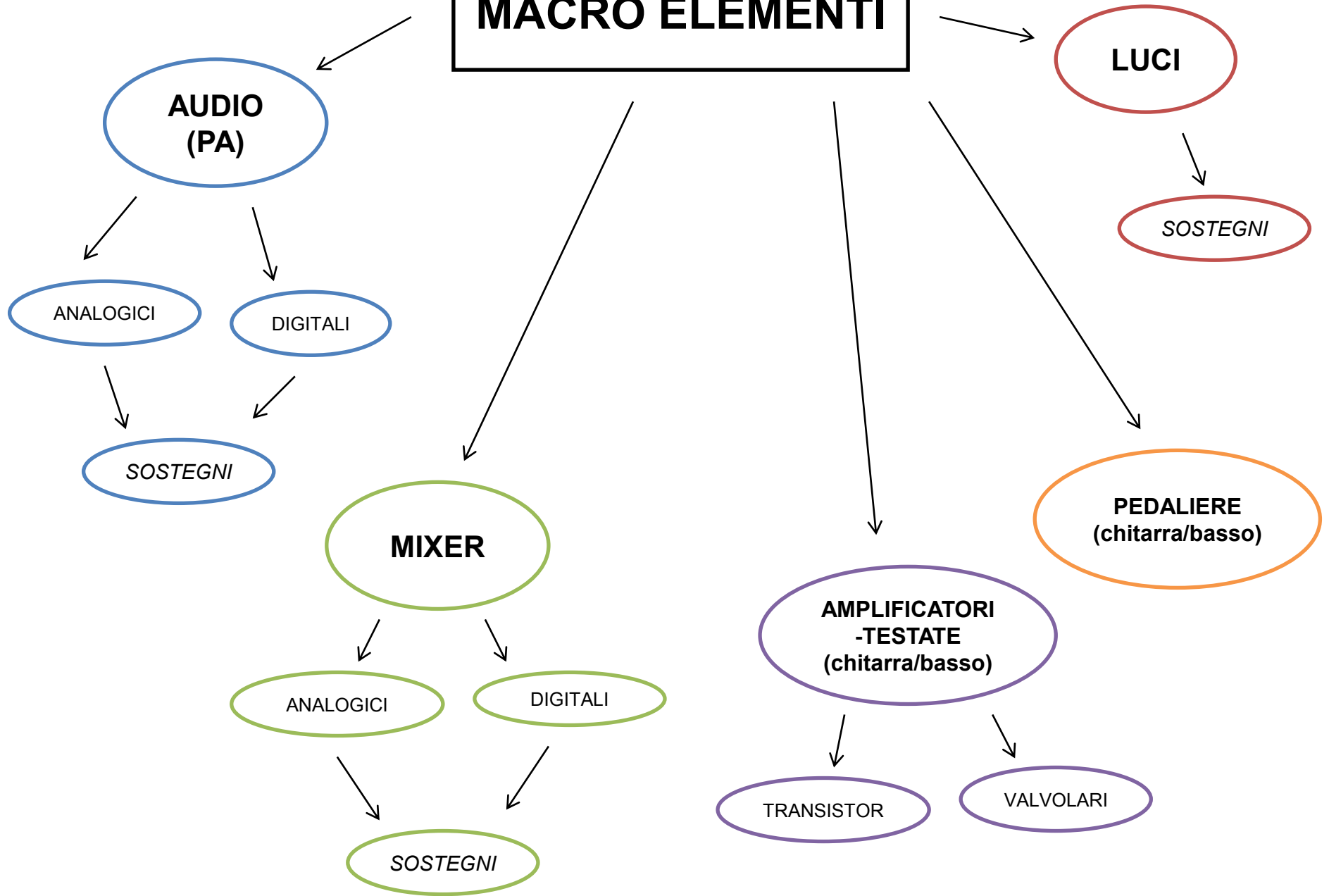
tensostrutture (?)



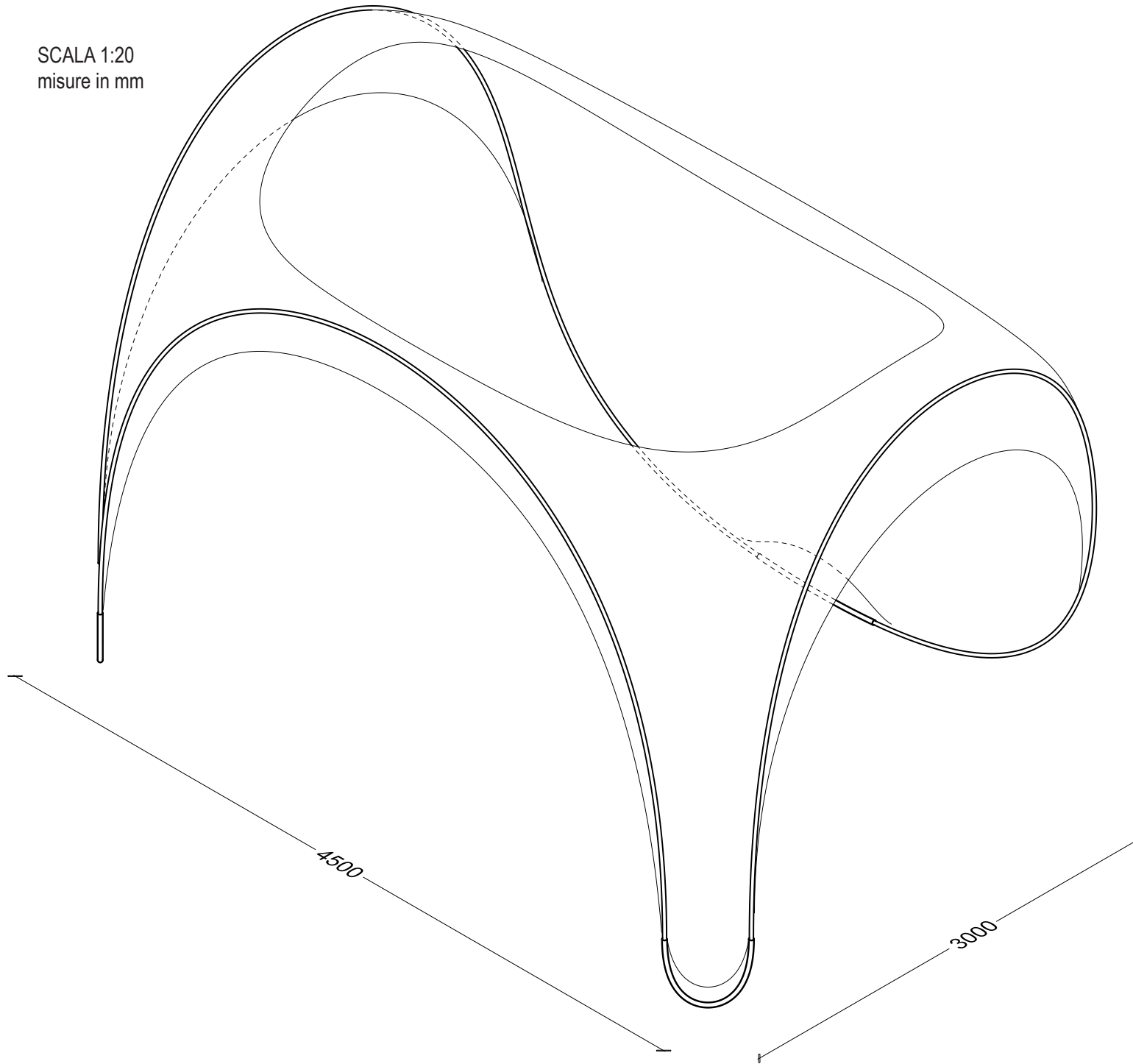
punti principali/caratteristiche del progetto



# MACRO ELEMENTI

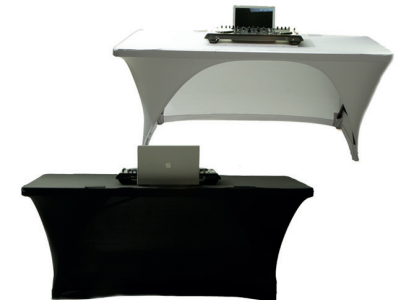
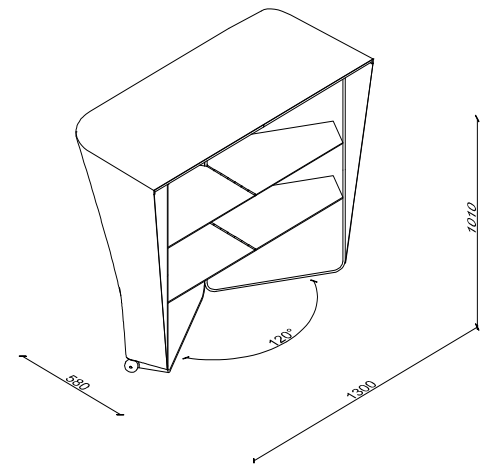
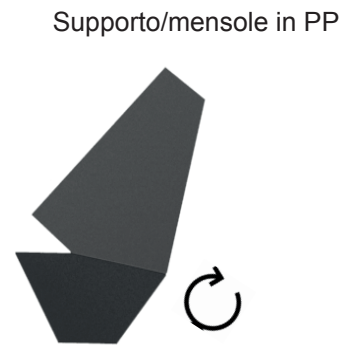
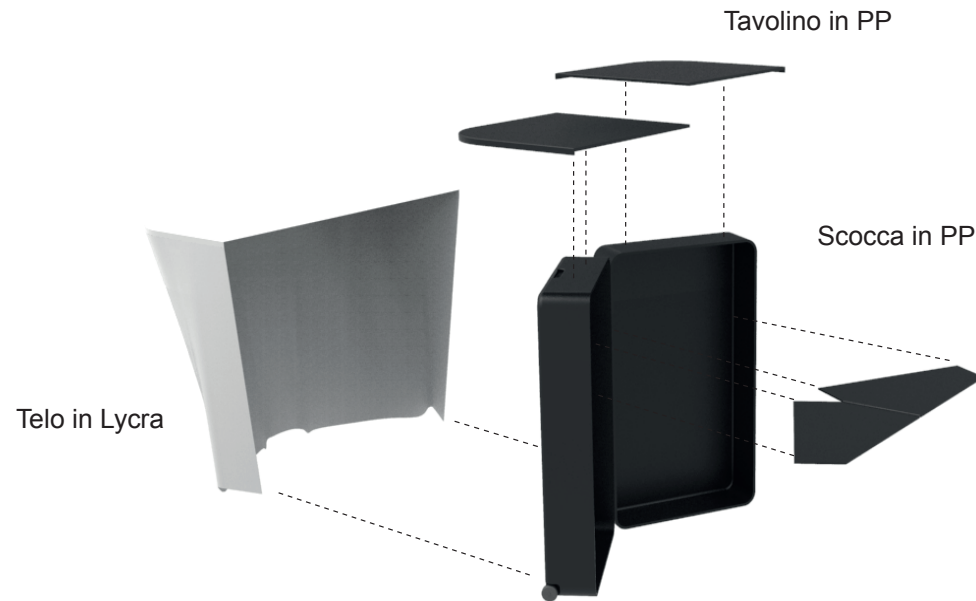


SCALA 1:20  
misura in mm

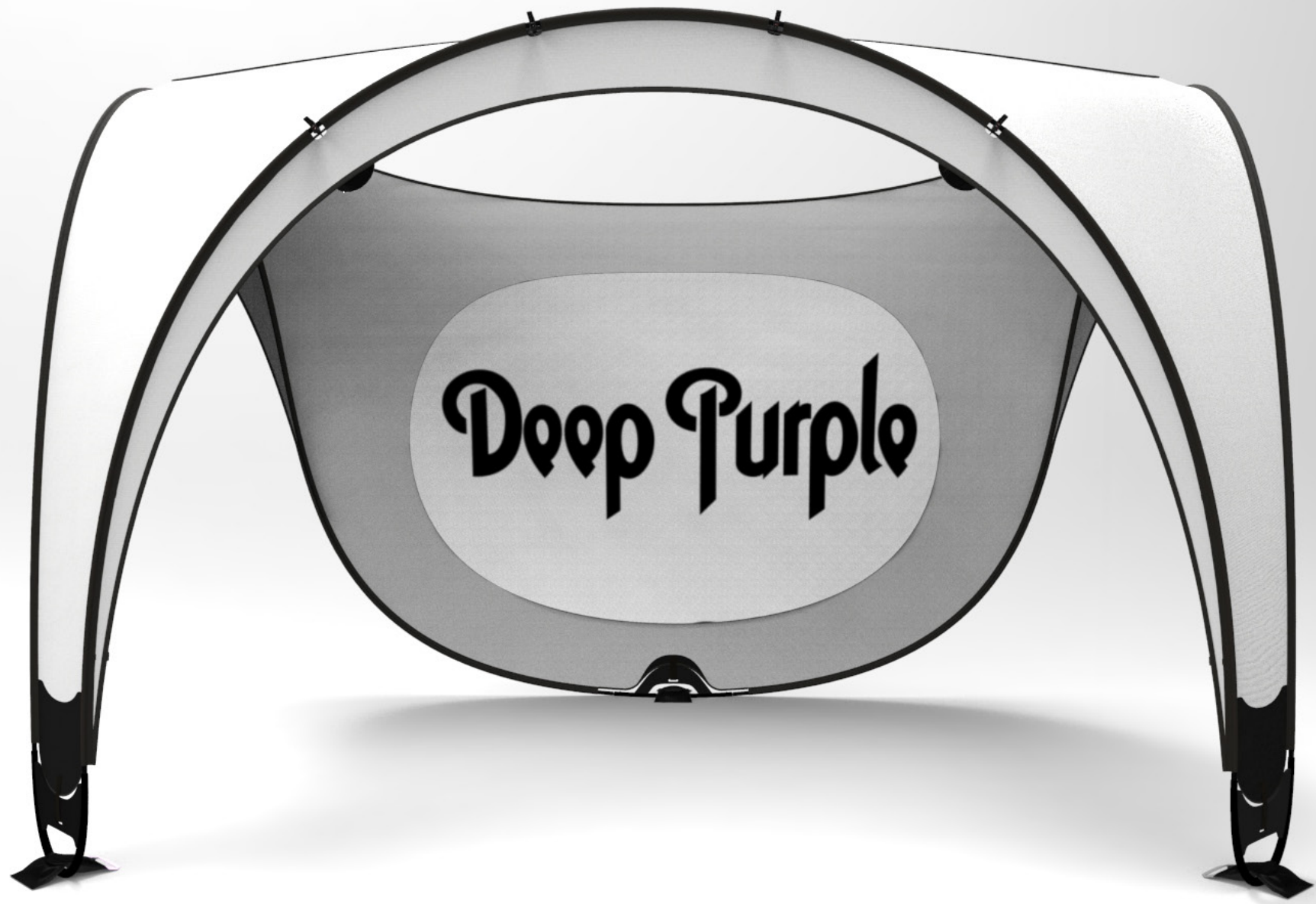


SCALA 1:75

# TROLLEY APERTA



Postazione per DJ o mixer



**Deep Purple**

