



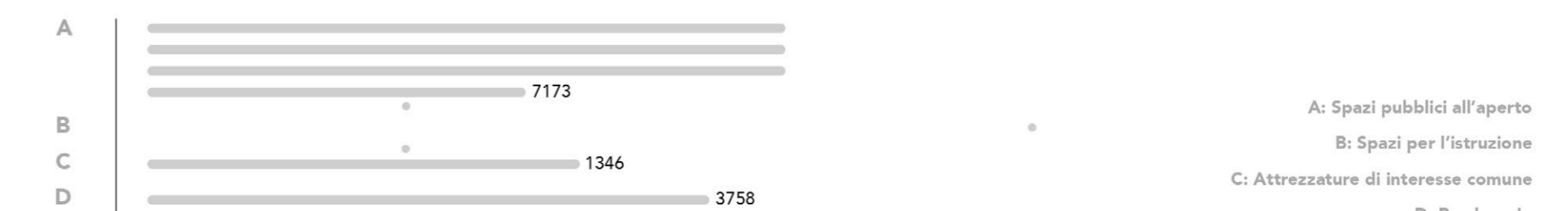
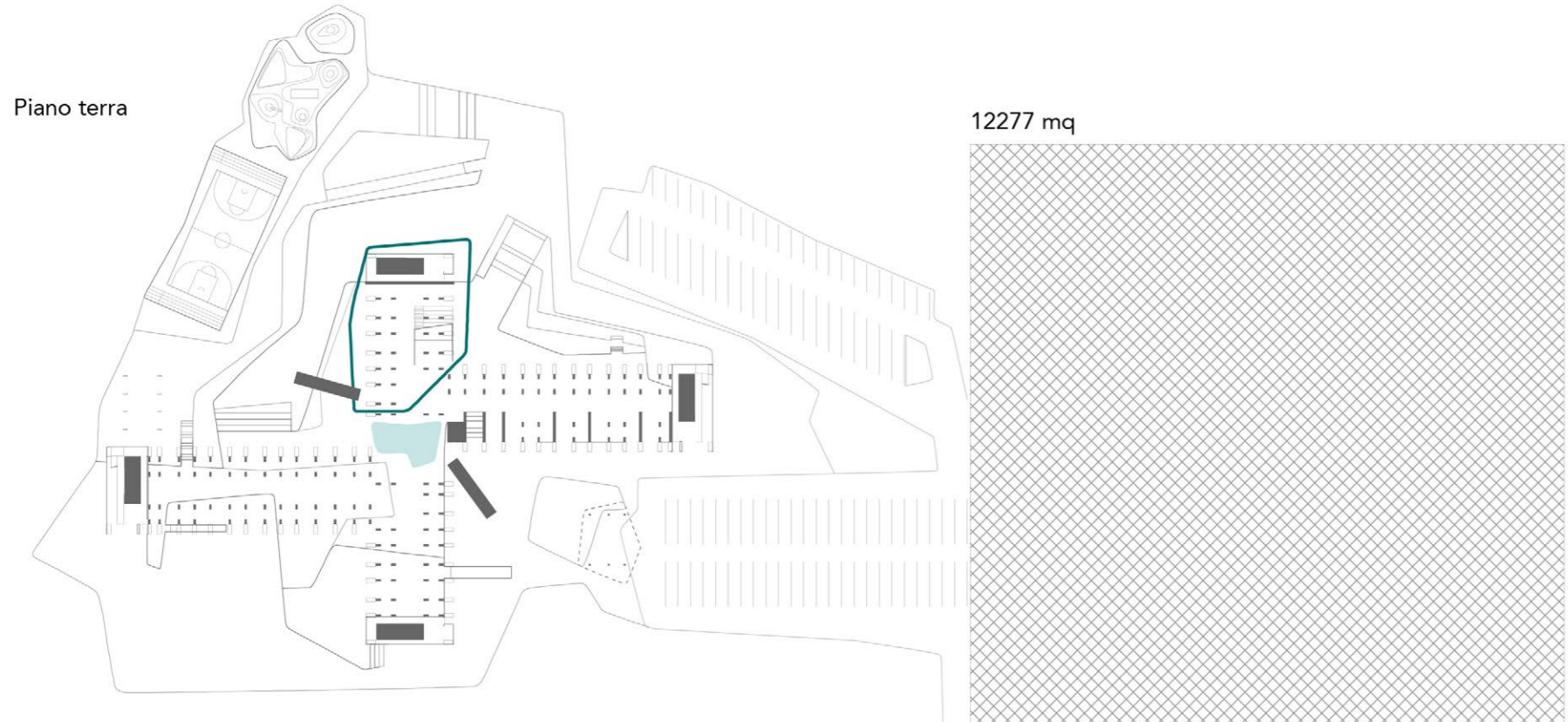
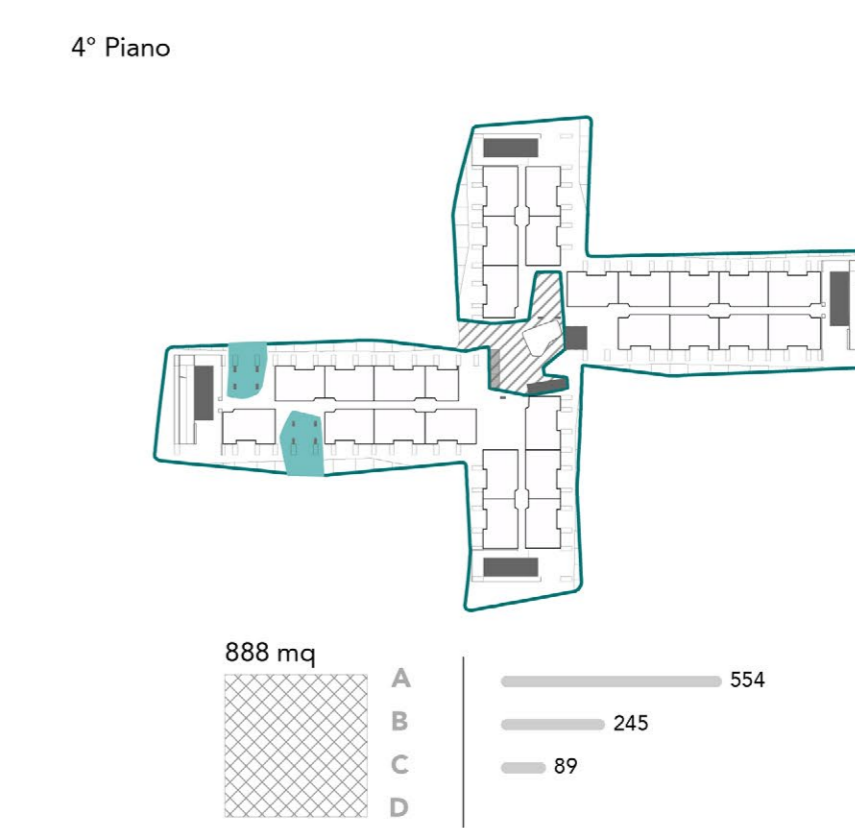
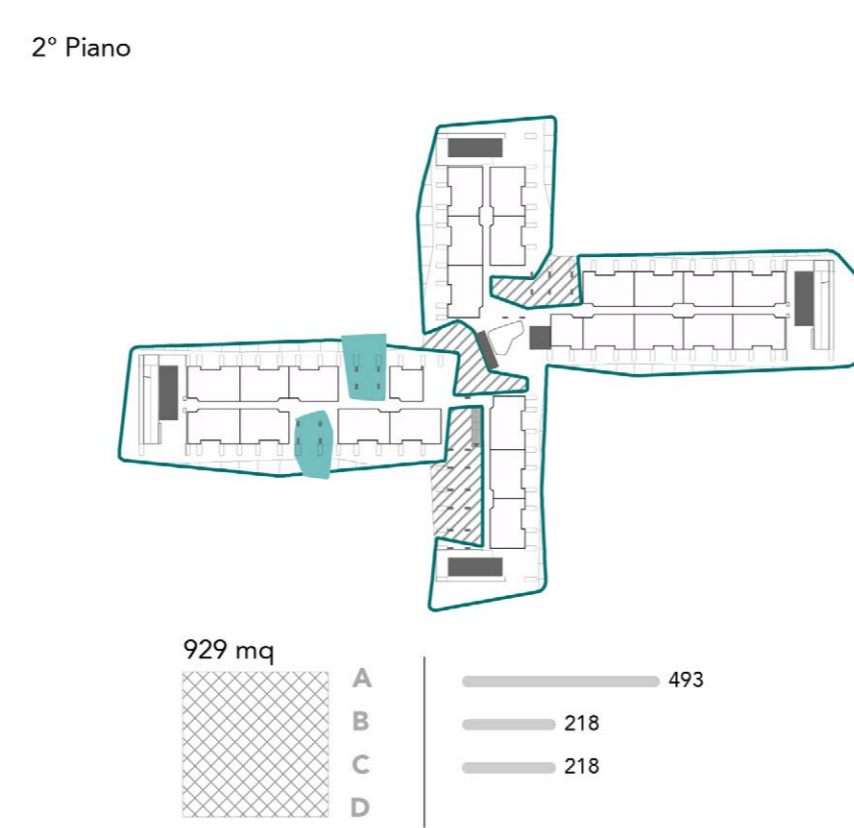
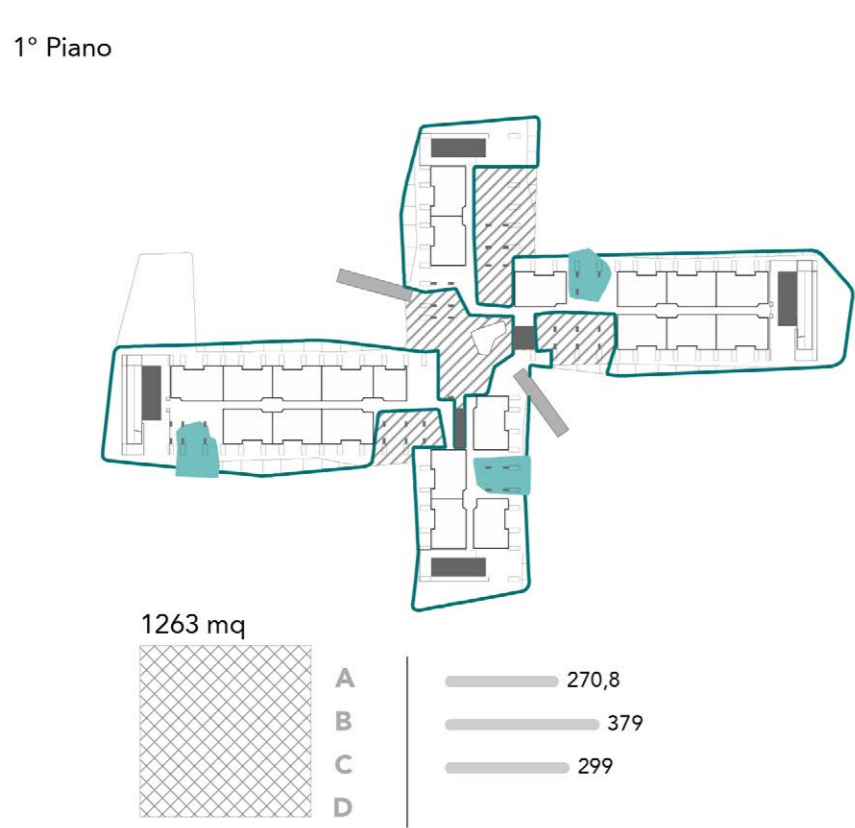
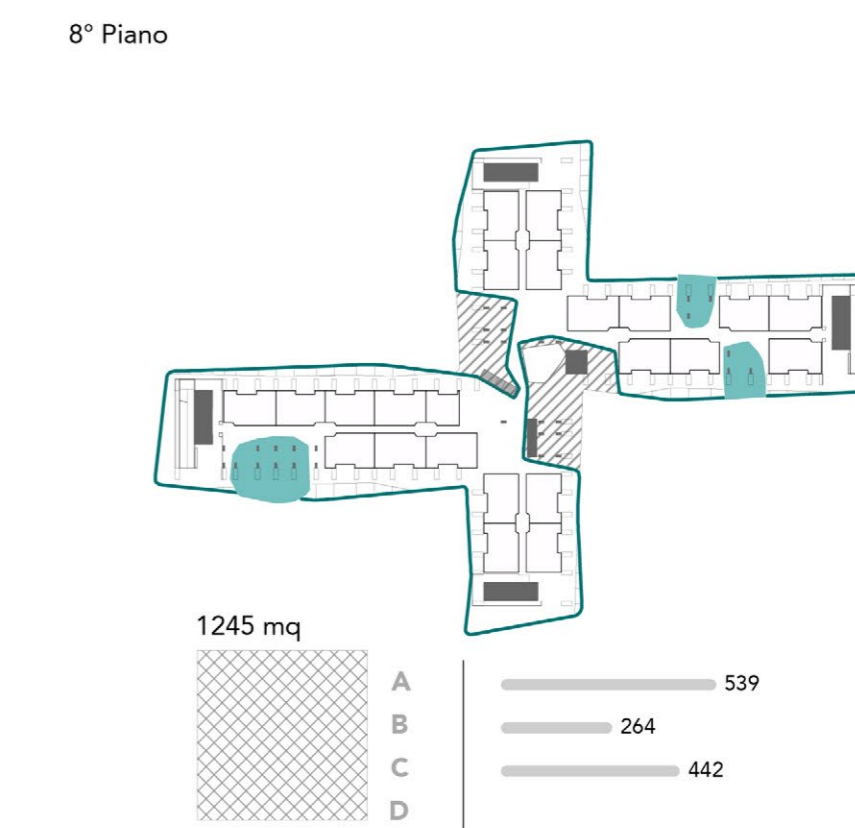
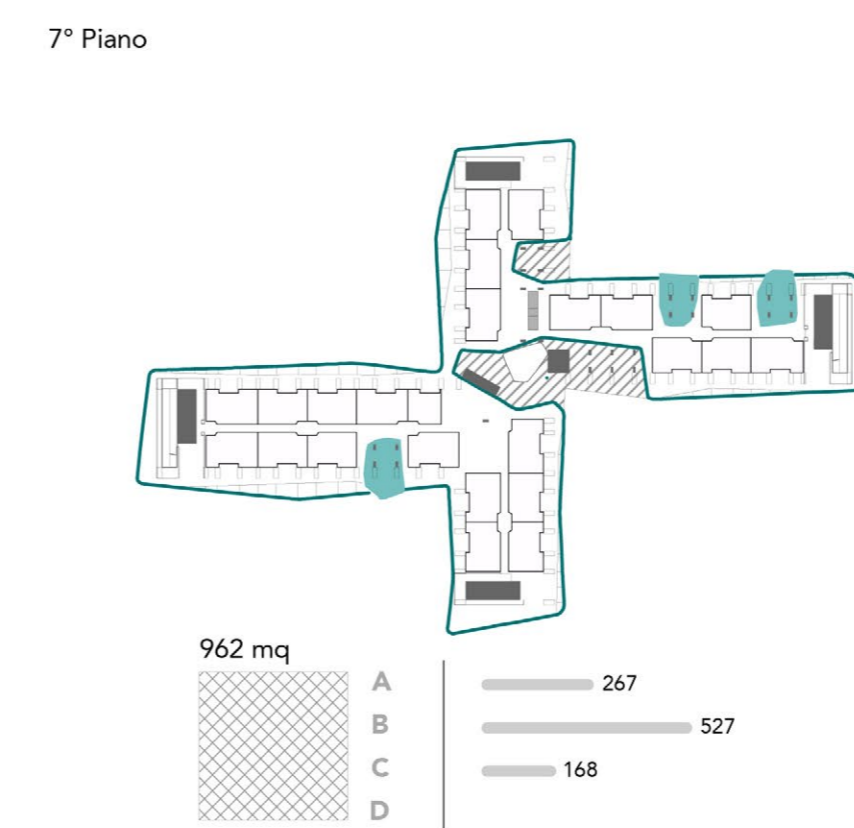
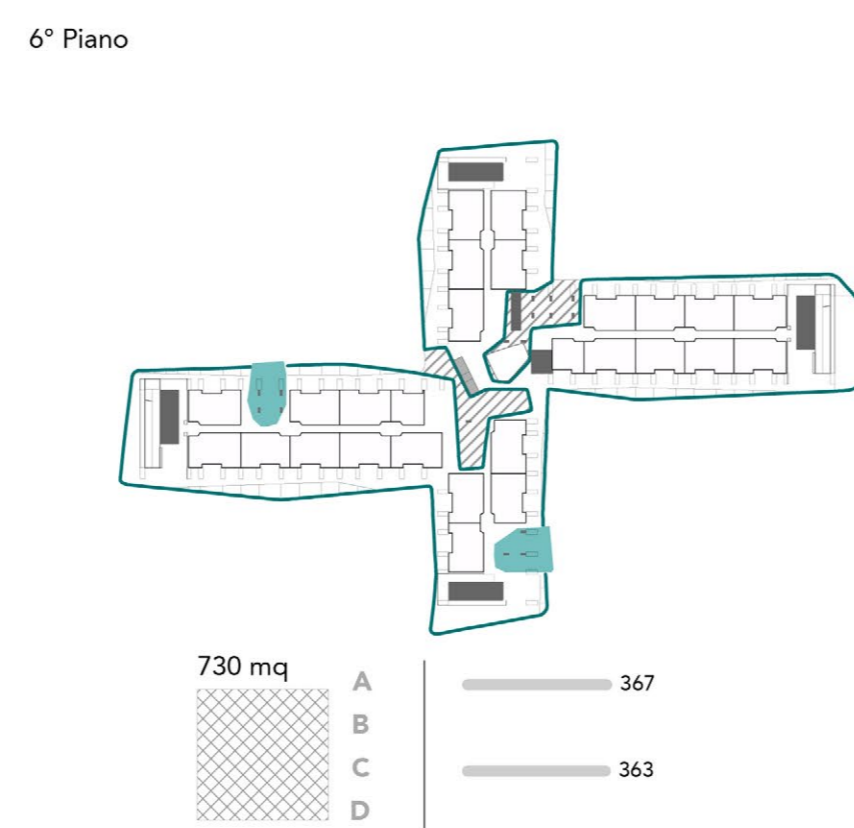
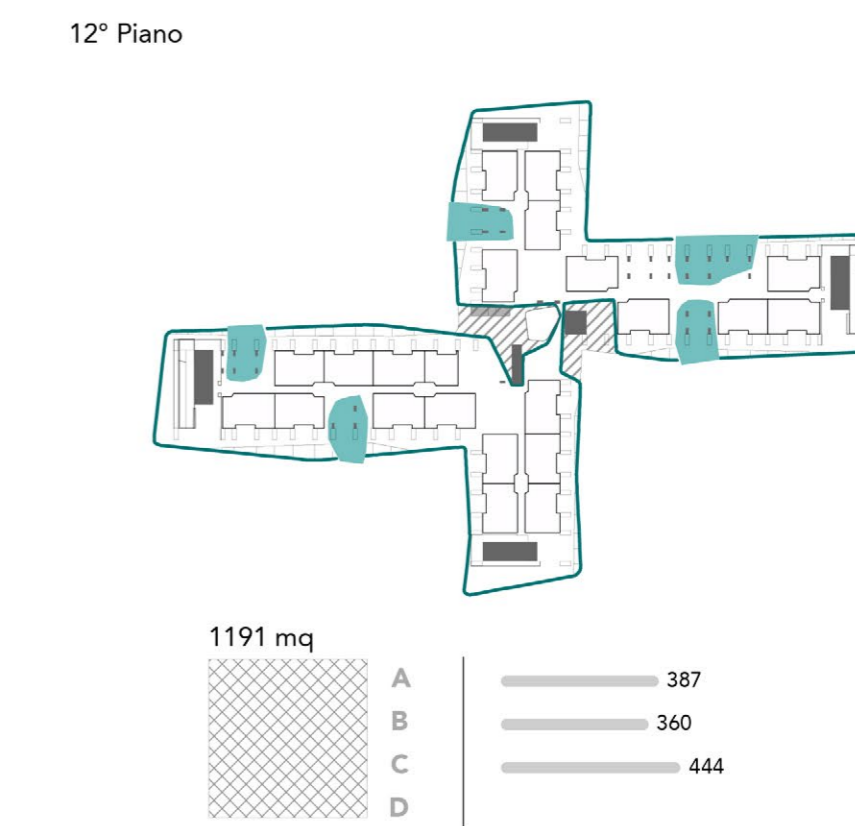
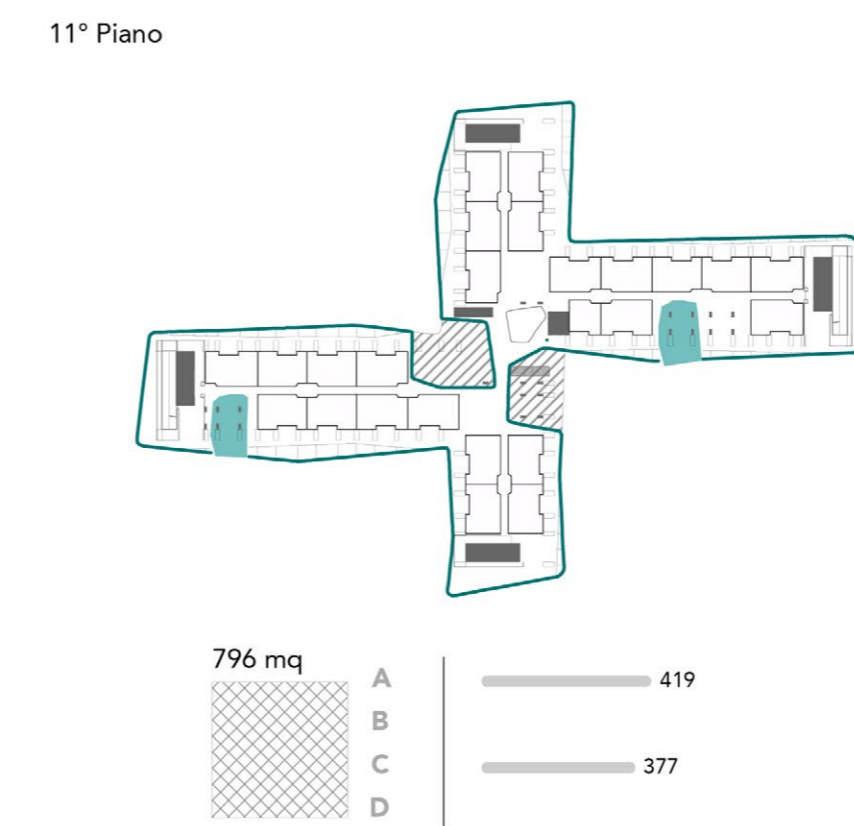
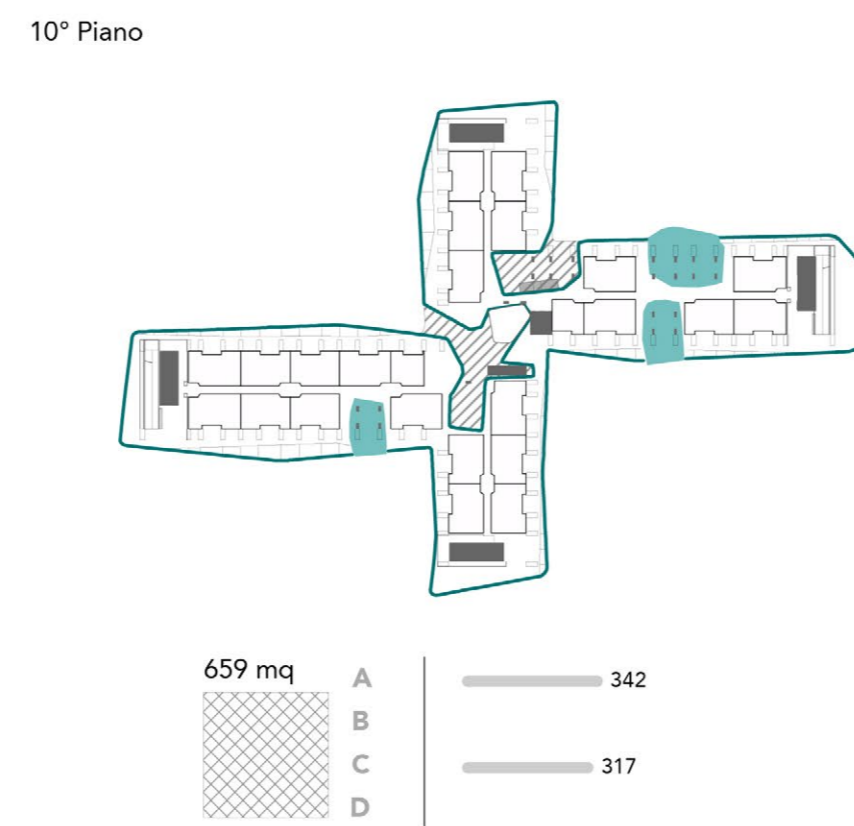
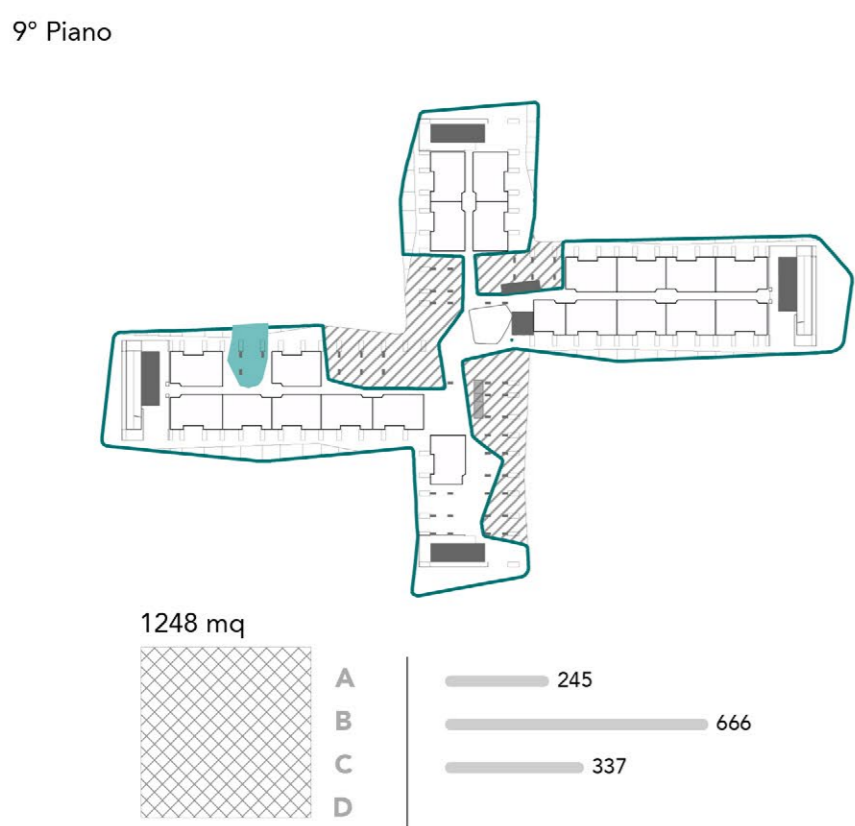
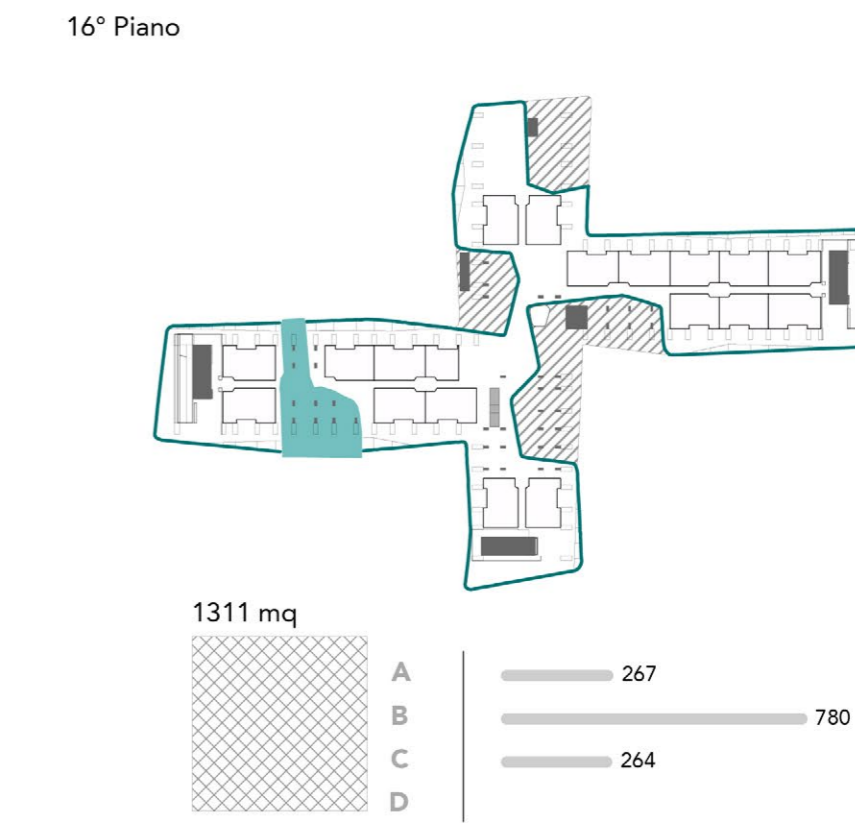
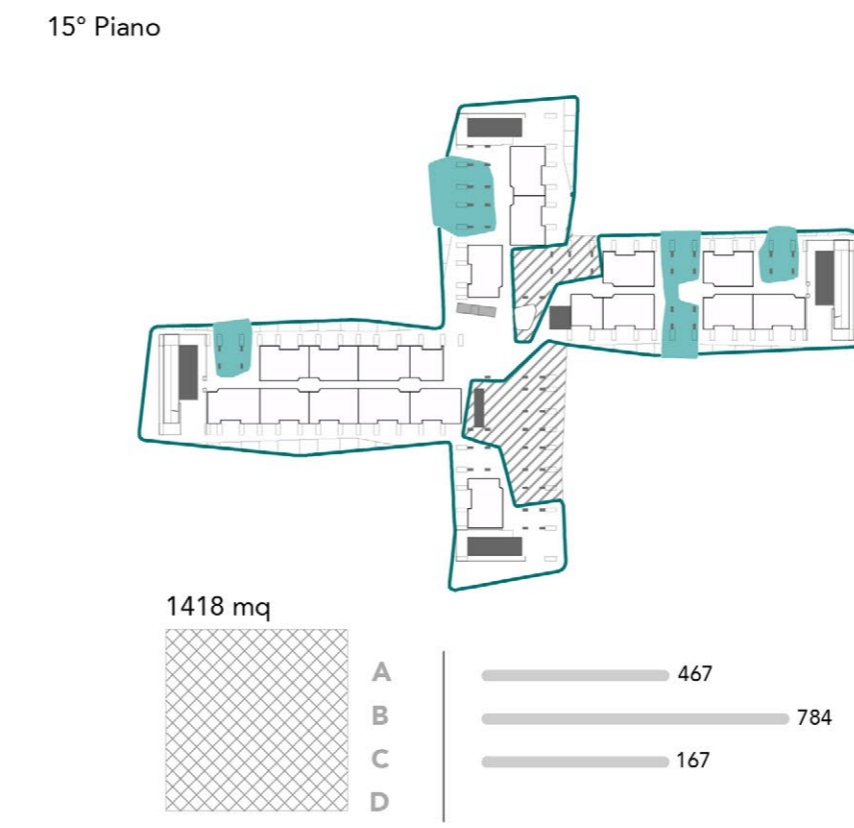
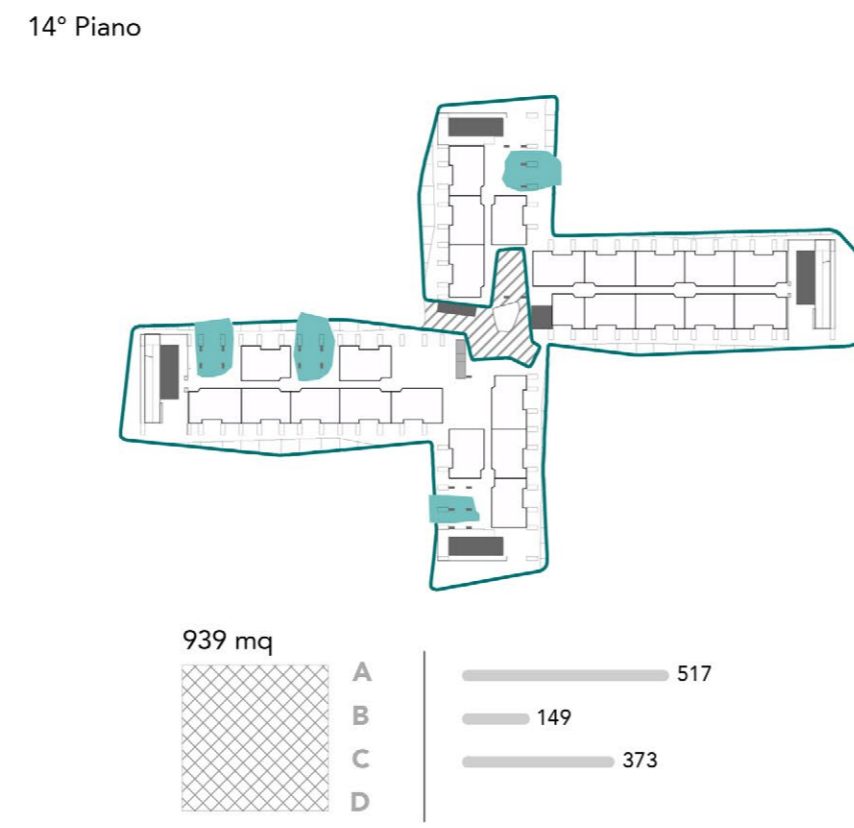
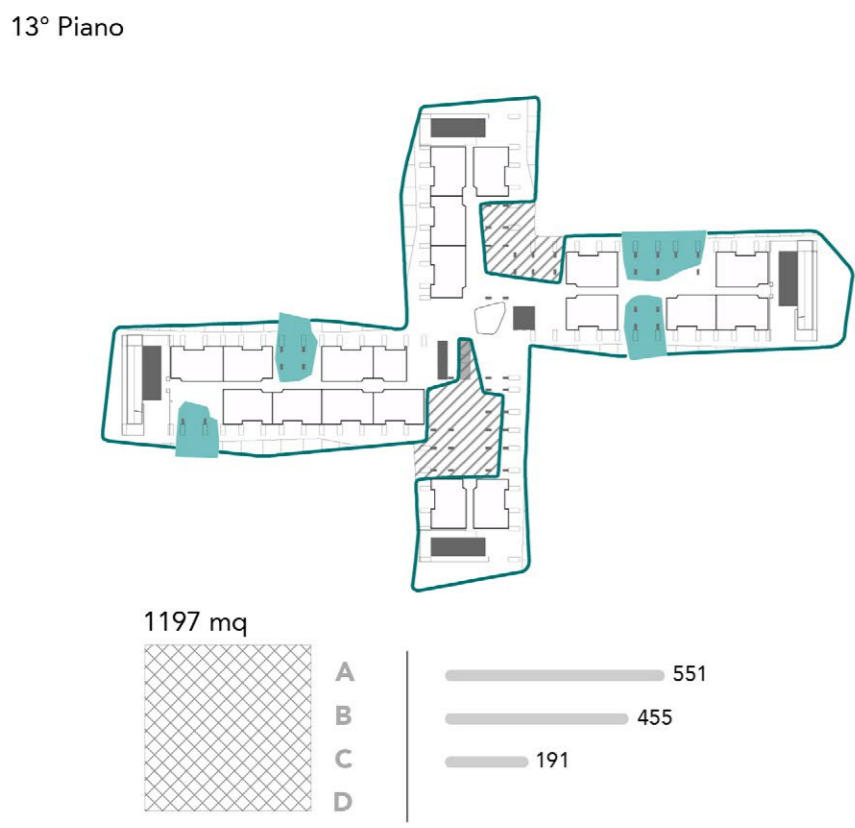
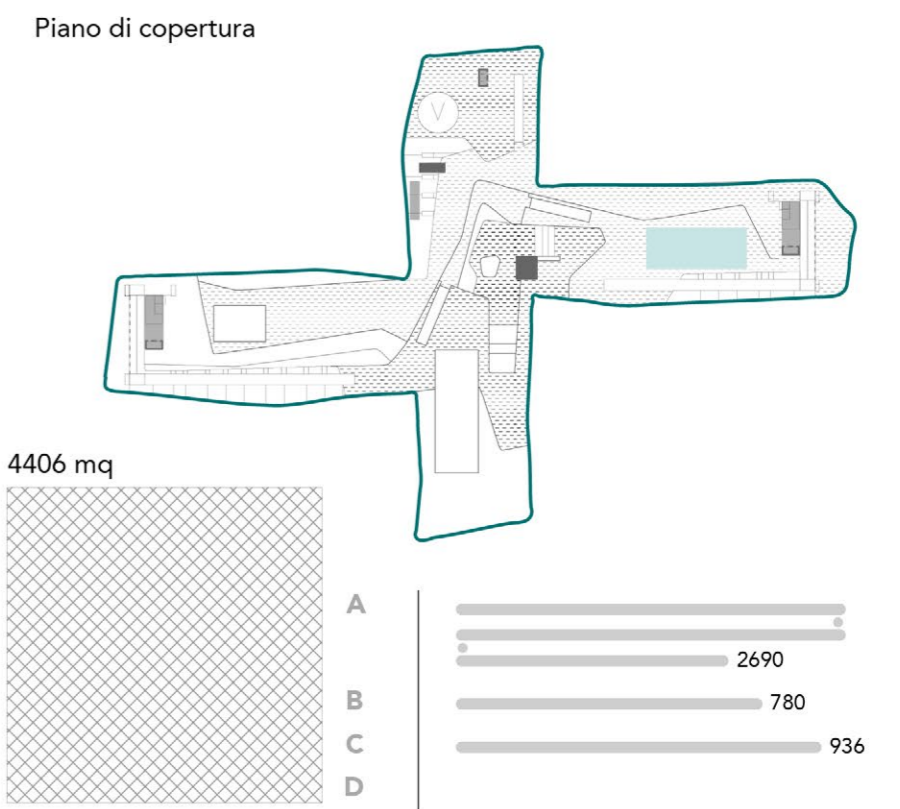
TITOLO TESI: Borgo Verticale. Riqualficazione architettonica dell'Hotel House a Porto Recanati (MC)

Relatore: prof. Marco d'Annunziis

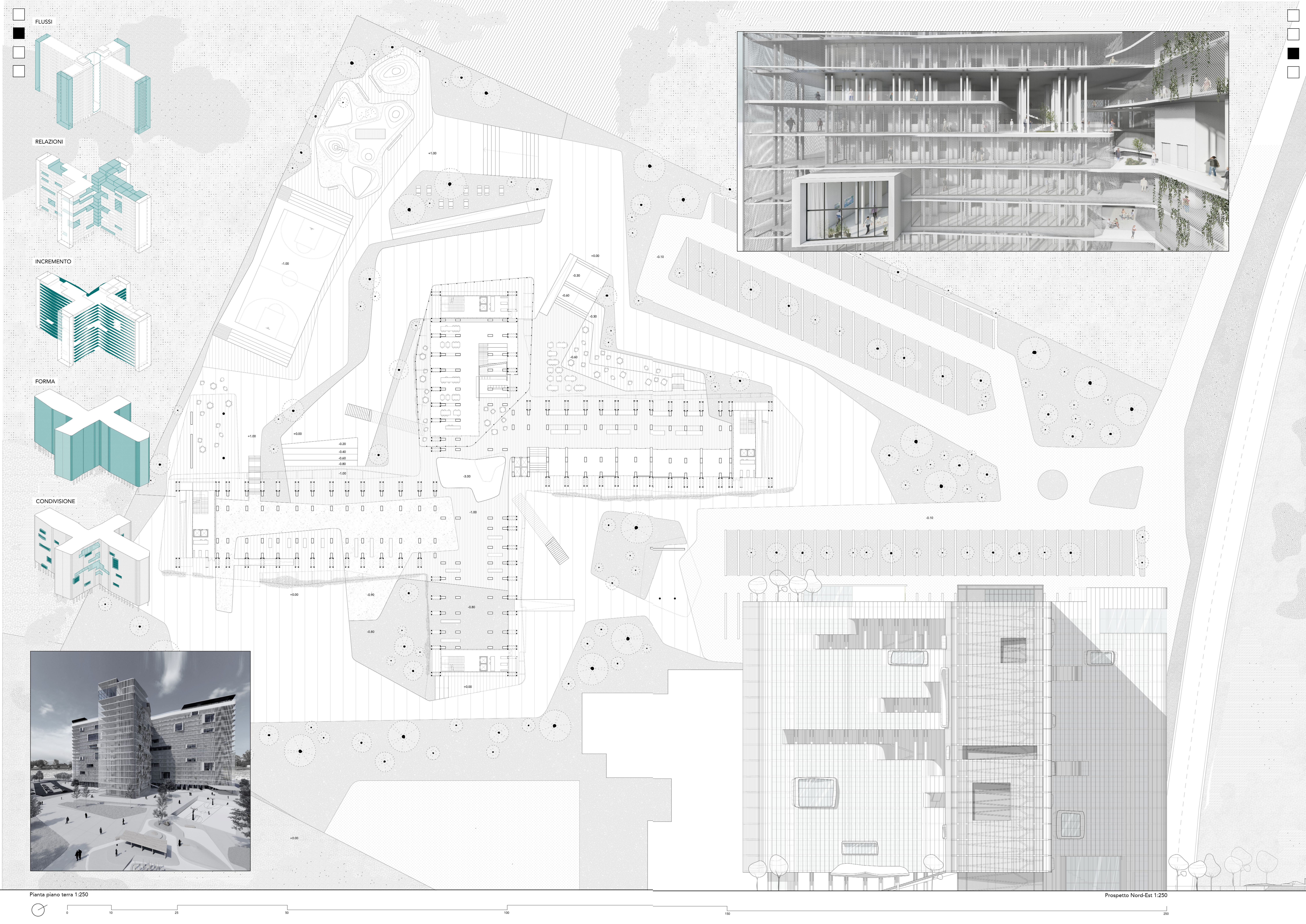
Correlatore: prof. Sara Cipolletti

Borgo Verticale ha come obiettivo la riconfigurazione del sistema sociale e culturale del complesso "territorio" contenuto all'interno dell'Hotel House. Azioni di riqualficazione architettonica, fisica e tecnologica introducono nuovi spazi di qualità per la convivenza. L'idea architettonica scardina la rigida configurazione spaziale che caratterizza l'edificio trasformandone l'immagine attraverso una forma nuova, priva dello stigma radicato al suo interno. Il nuovo sistema formale, oltre che contenere dispositivi strutturali e ambientali, permette l'ampliamento dello spazio privato generando una nuova dimensione di coesistenza tra gli abitanti. La smaterializzazione del blocco centrale e la ridefinizione del sistema distributivo introducono un radicale cambiamento nelle modalità di fruizione dell'ambiente interno, potenziato grazie all'utilizzo degli appartamenti ipotocati per la creazione di uno spazio pubblico unico. Il nuovo sistema di relazioni qualifica l'Hotel house come Borgo Verticale.

Laureanda: Claudia Vagnozzi







FLUSSI

RELAZIONI

INCREMENTO

FORMA

CONDIVISIONE

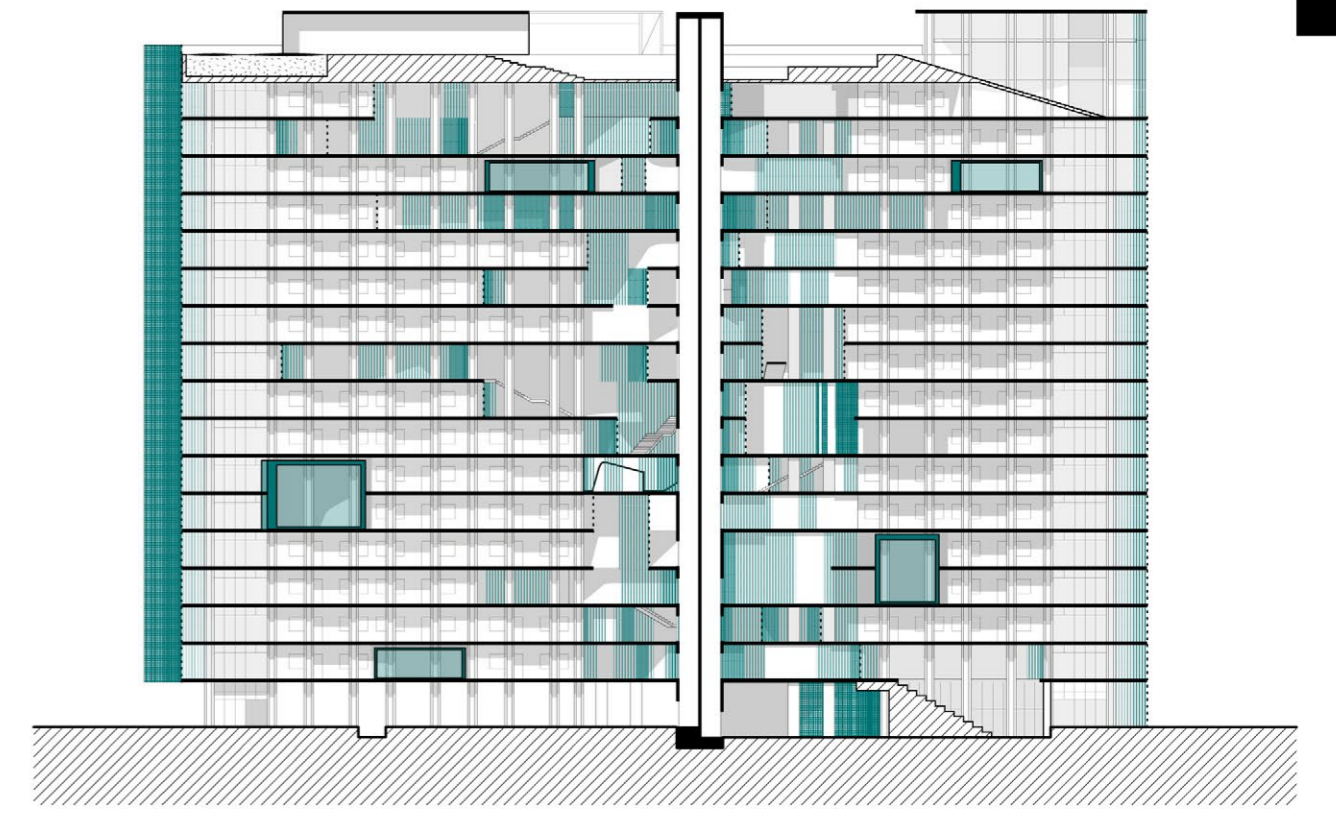
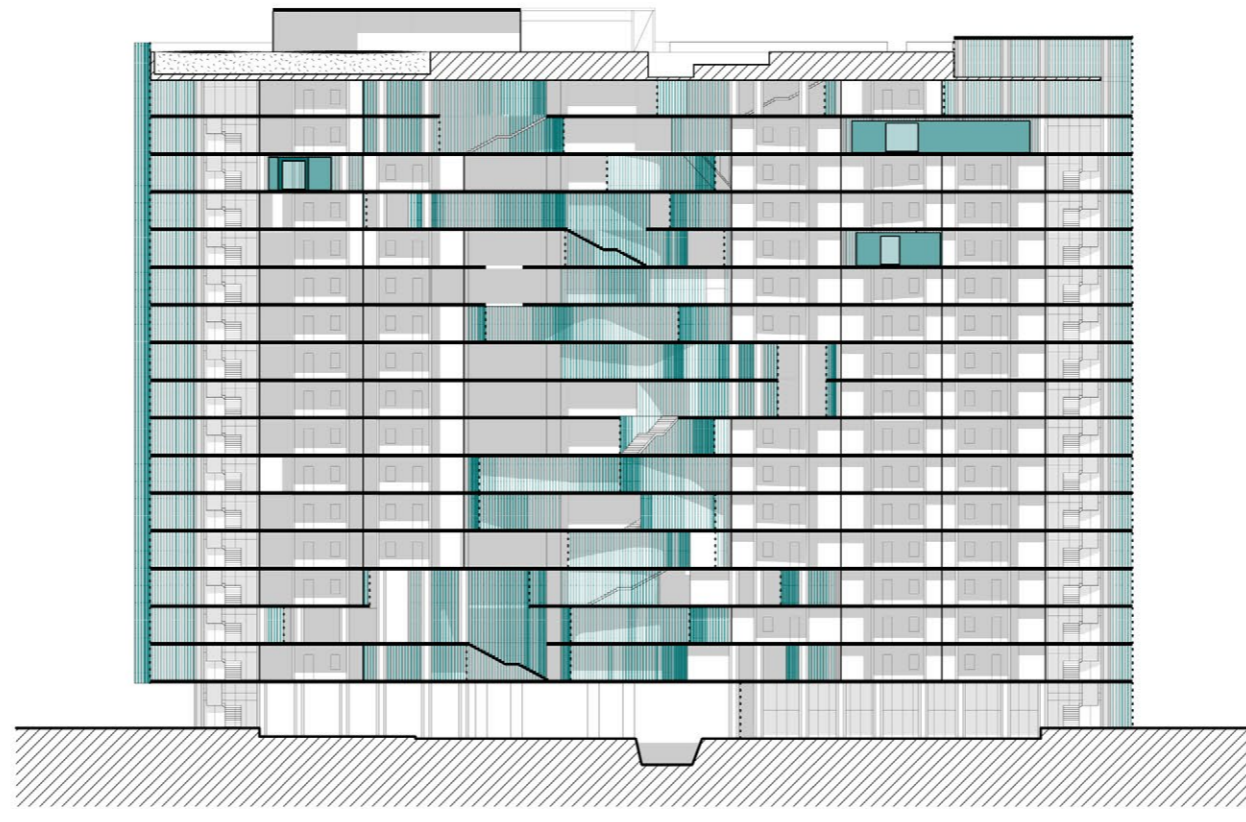
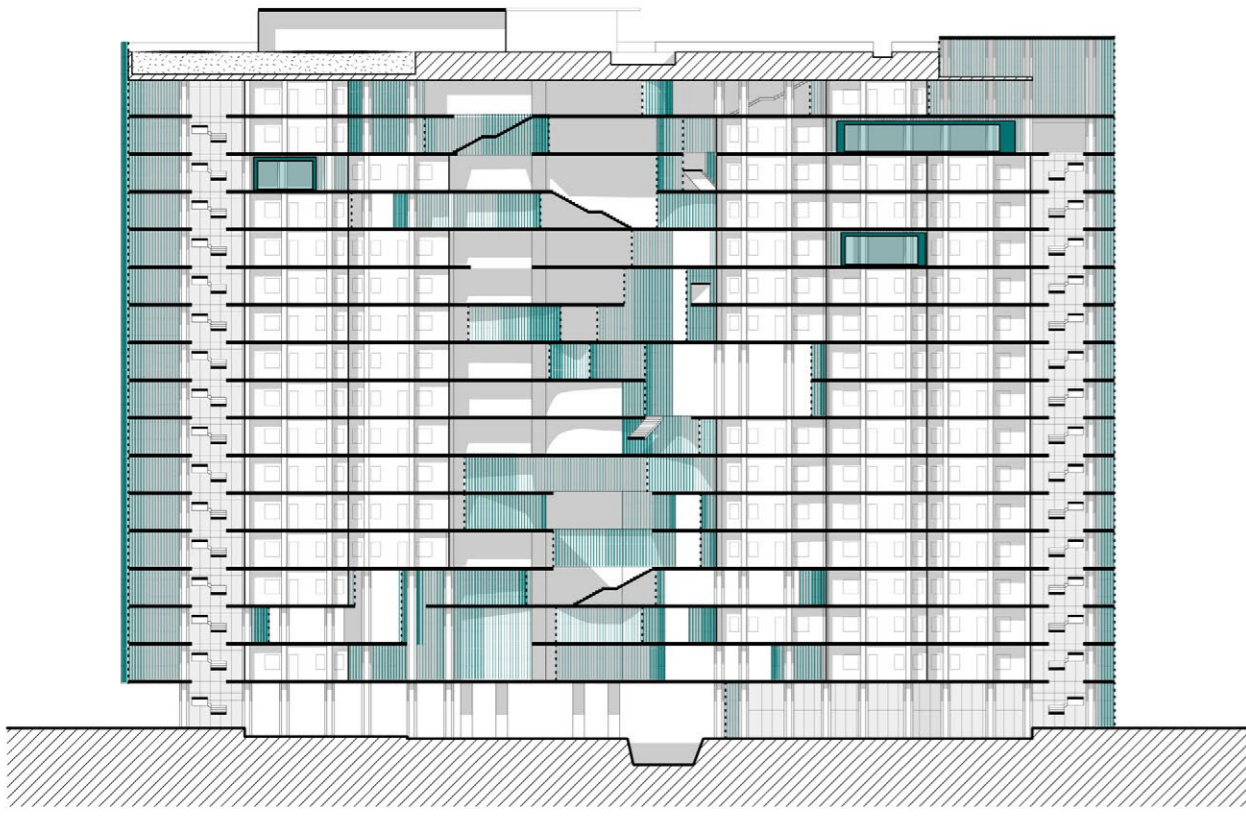
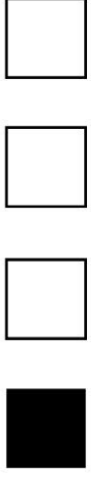
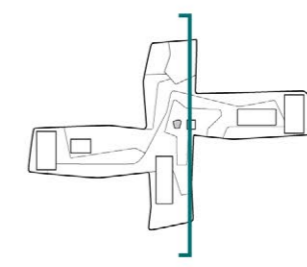
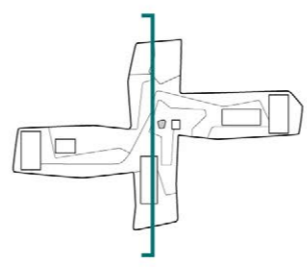
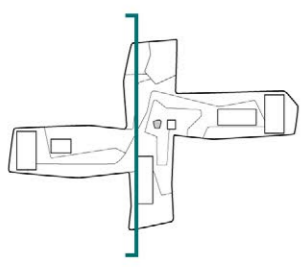


Pianta piano terra 1:250

Prospetto Nord-Est 1:250







0 10 25 50 100 150 250

